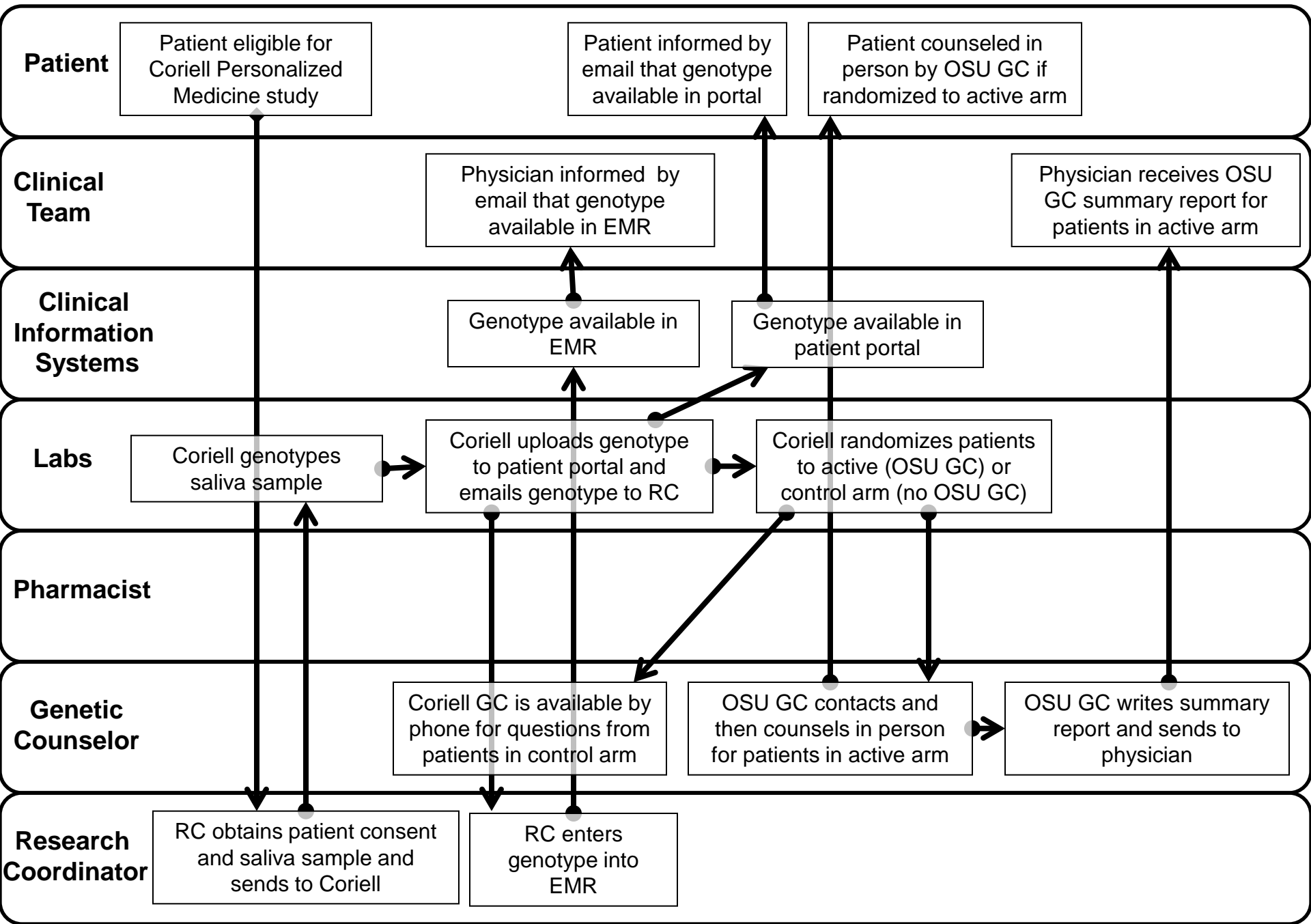
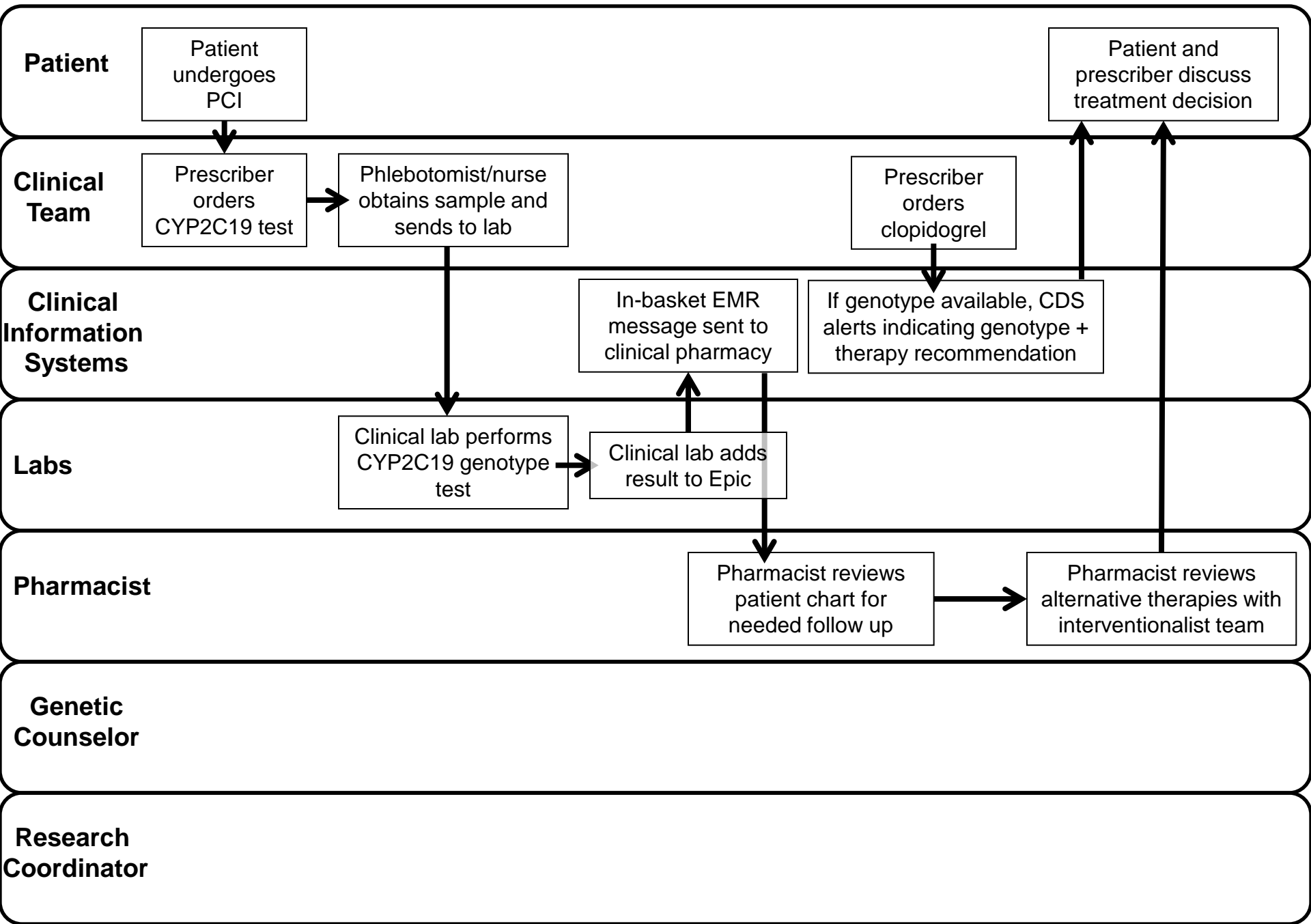
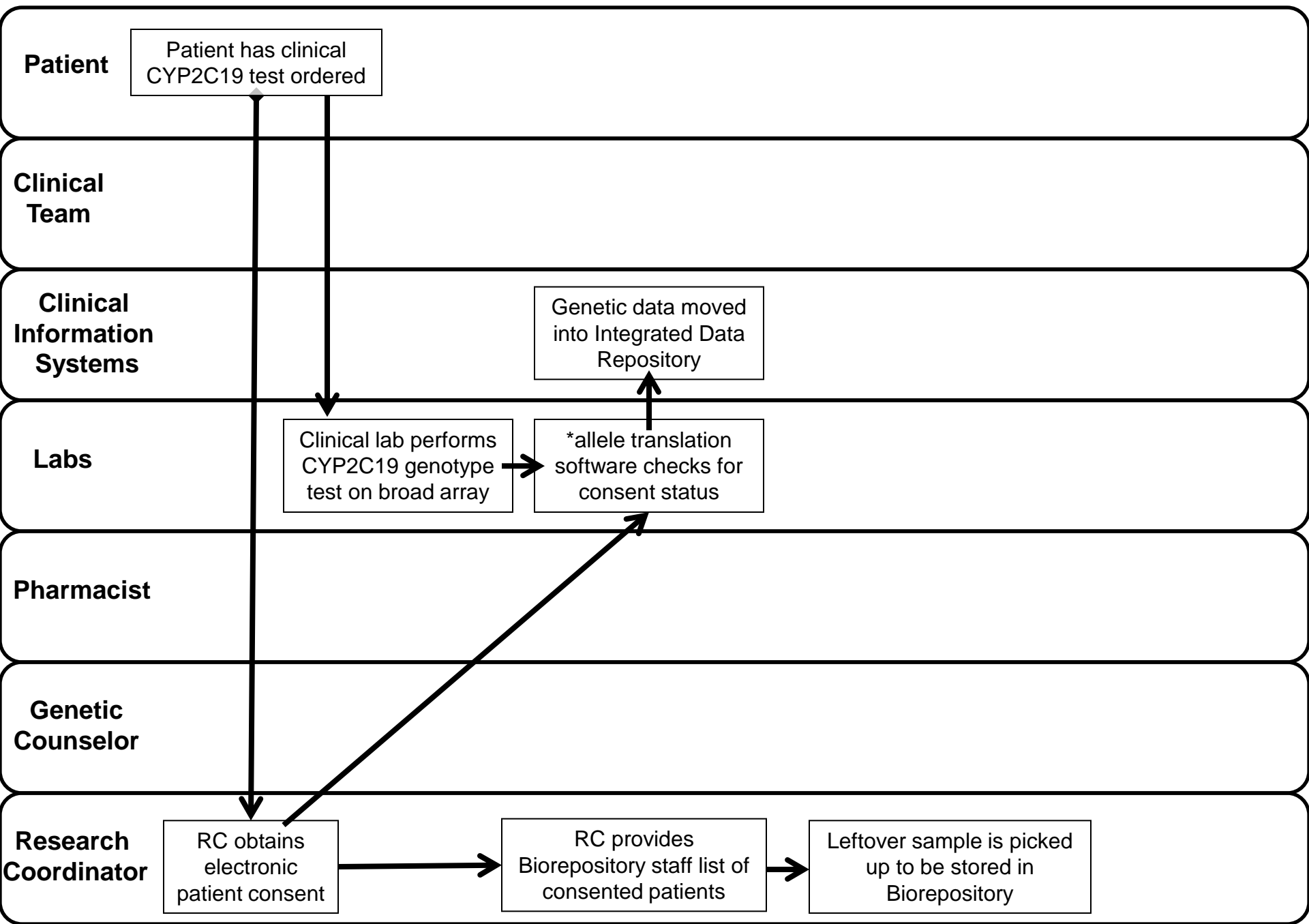
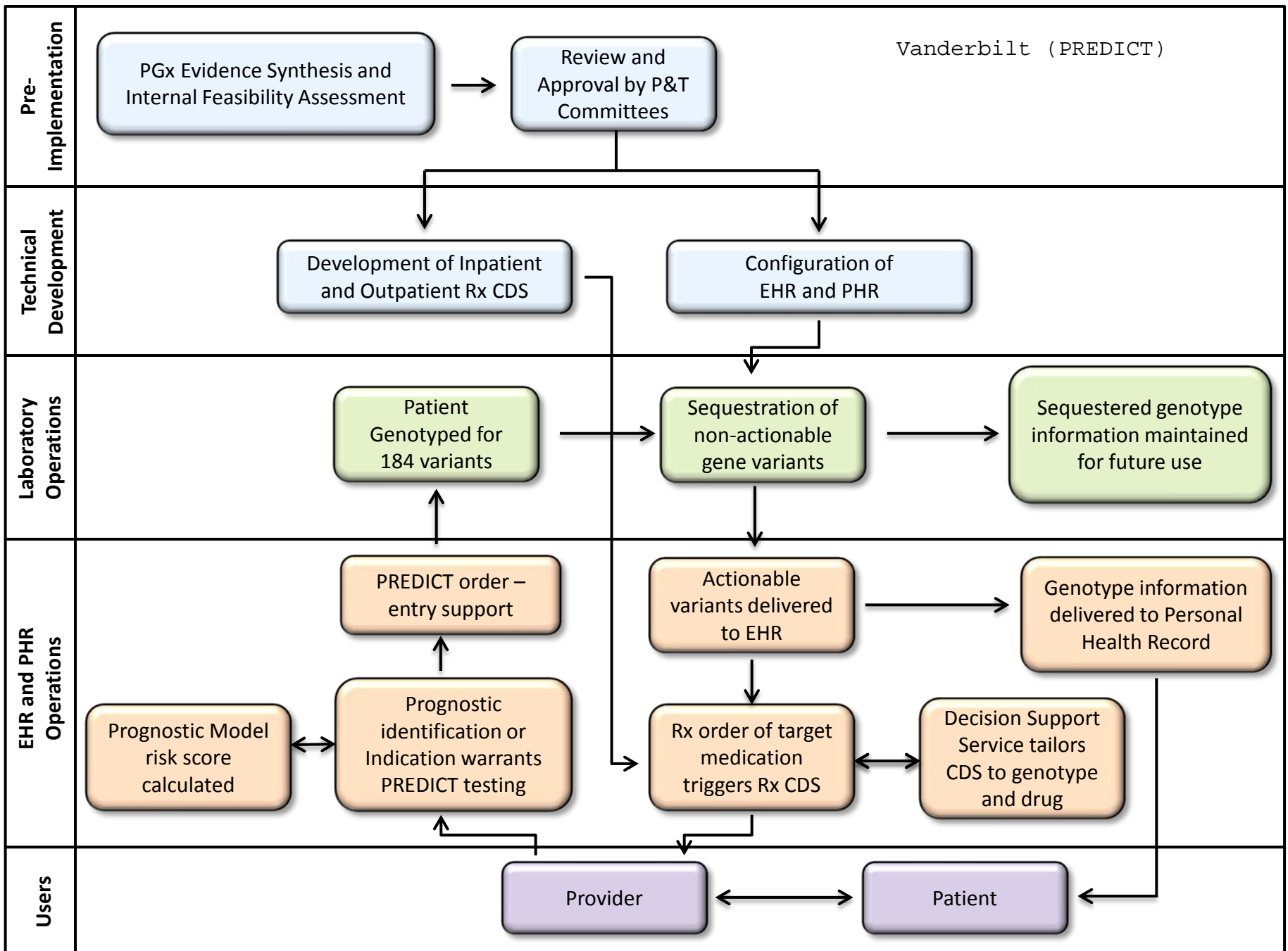


SITE: Ohio State University **GENE/DRUG:** CYP2C19/clopidogrel **TYPE:** Research

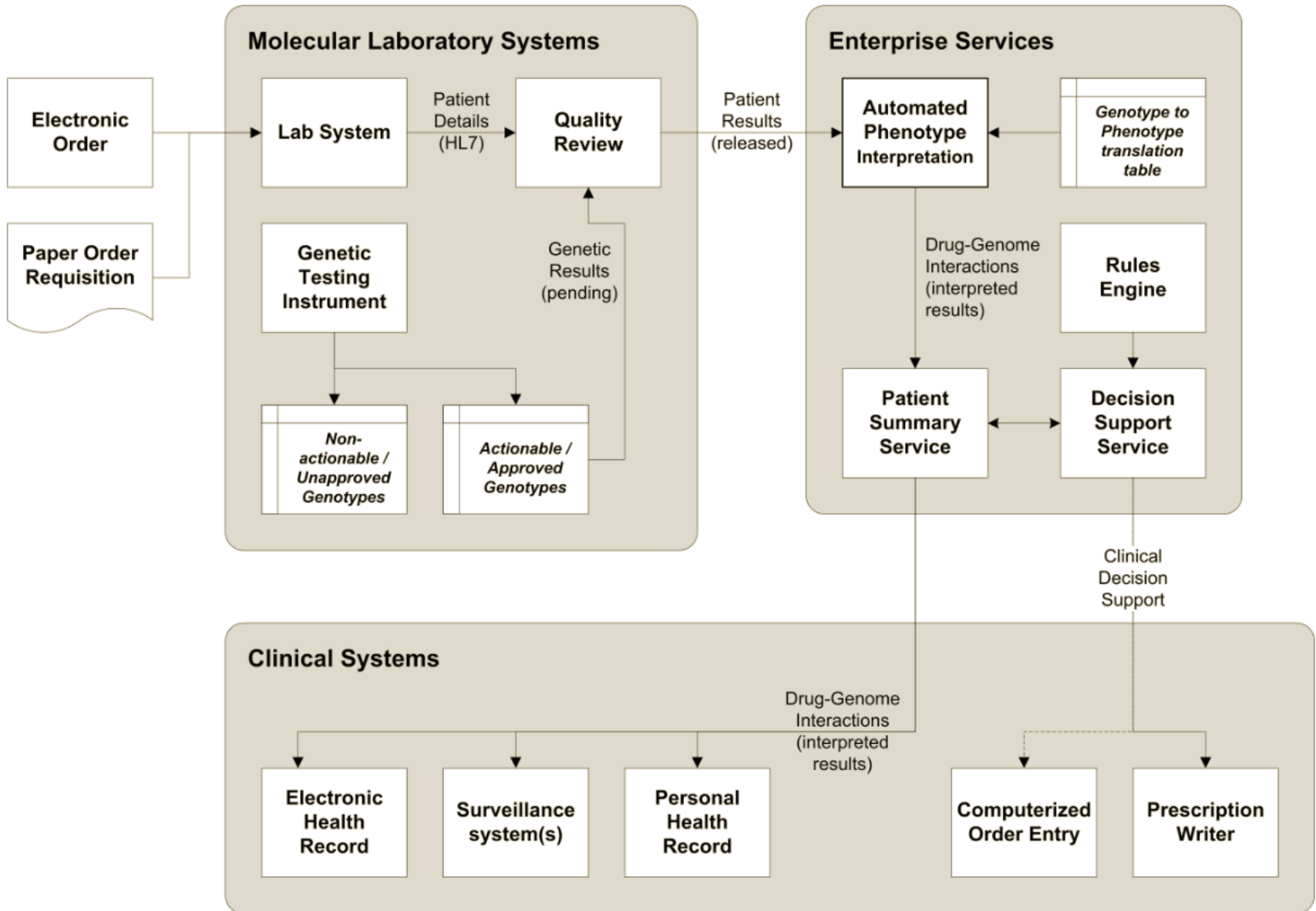




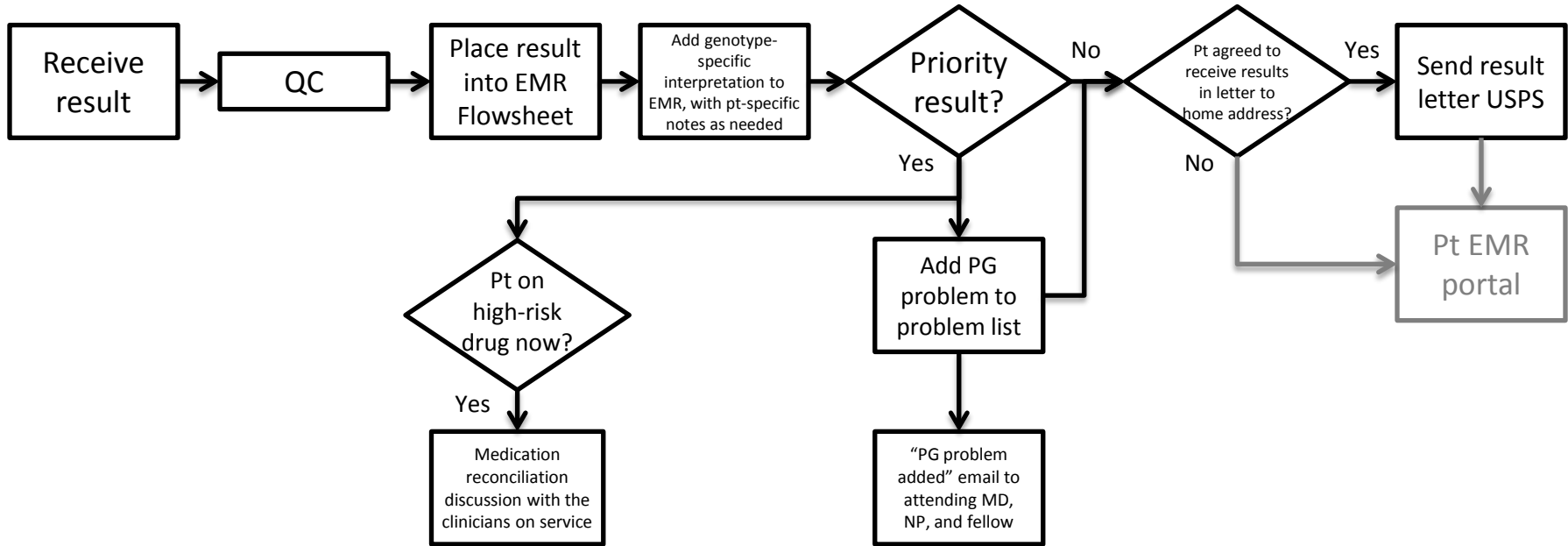




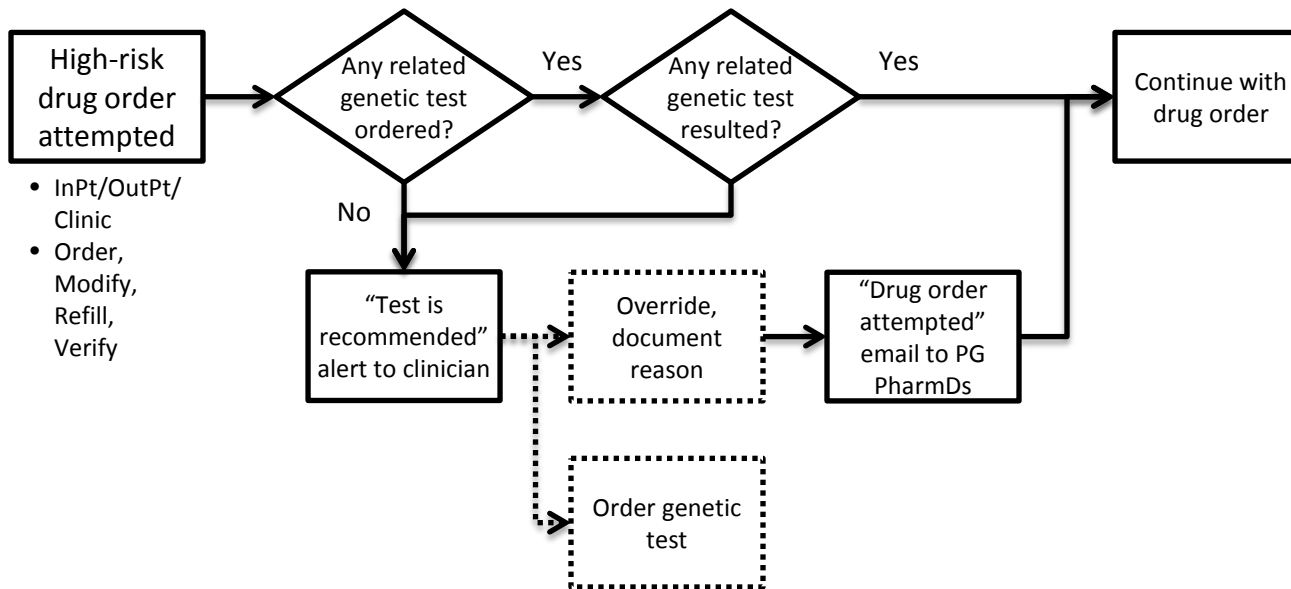
PREDICT Result Reporting Architecture



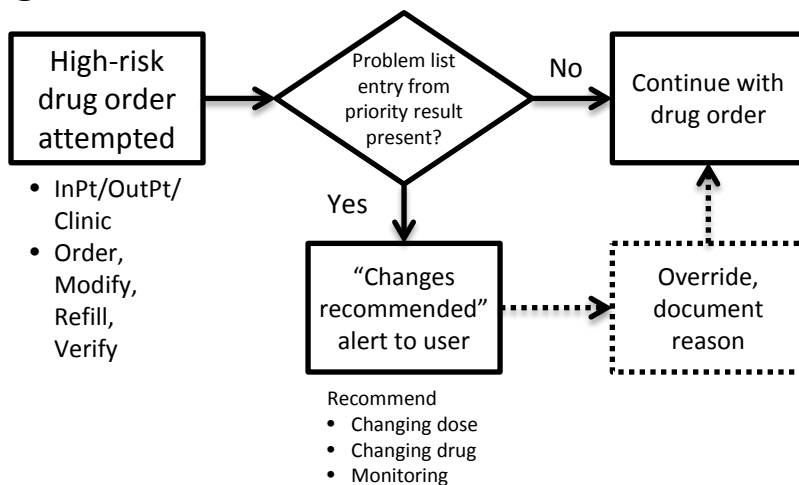
All PGen Results Interpreted



Pre-test: drug order attempt, no genetic tests; general case



Post-test: drug order attempt, genetic results available; general case



Advertised lines of support information

- Contact PG PharmD; phone, email
- www.stjude.org/pg4kds;
- www.pharmgkb.org
- PG Formulary (linked from hospital formulary)
- Contact PK research nurses; phone, email