

### ***Supplementary Figures Captions***

**Figure S1:** HPLC Measurements of AT-RvD1 Release (A) HPLC chromatograph of unloaded PLGA scaffold. (B) HPLC chromatograph of PLGA scaffold loaded with AT-RvD1. Arrow demonstrates AT-RvD1 elution peak. (C) Release profile of AT-RvD1 loaded into PLGA scaffolds. (D) Early release of nearly 80% of AT-RvD1 is achieved over 3 days. (E-F) Scanning electron micrographs of the film surface of PLGA and PLGA-AT-RvD1 films, Scale bars, 2 $\mu$ m.

**Figure S2:** The overall proportion of neutrophils out of CD45+ CD11b+ cells decreases after three days. Flow cytometric analysis of neutrophils in the (A) dorsal tissue and (B) blood three days after surgery.

**Figure S3:** Tissue monocyte and macrophage levels are unchanged 1 day after surgery. Flow cytometric analysis of (A) AMs, (B) IMs, (C) M2s, and (D) M1s present in dorsal tissue

**Figure S4:** Cytokine levels in the dorsal skin tissue at 1 and 3 days post-surgery. Luminex multi-plex analysis of (A) MMP-9, (B) FGF- $\beta$ , and (C) IL-10 expression is unchanged between groups after dorsal skinfold window chamber surgery.

Figure S1

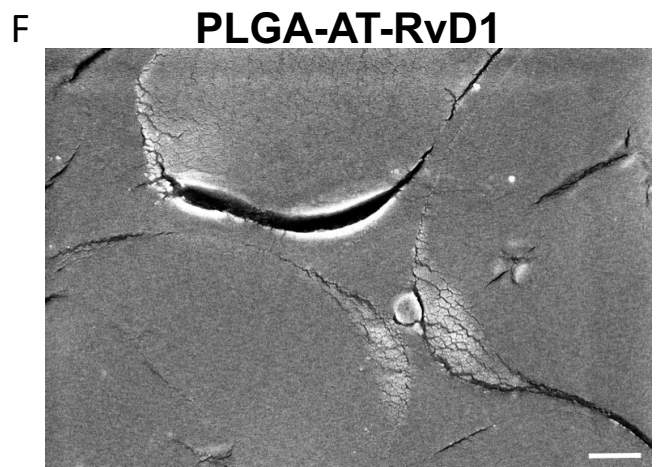
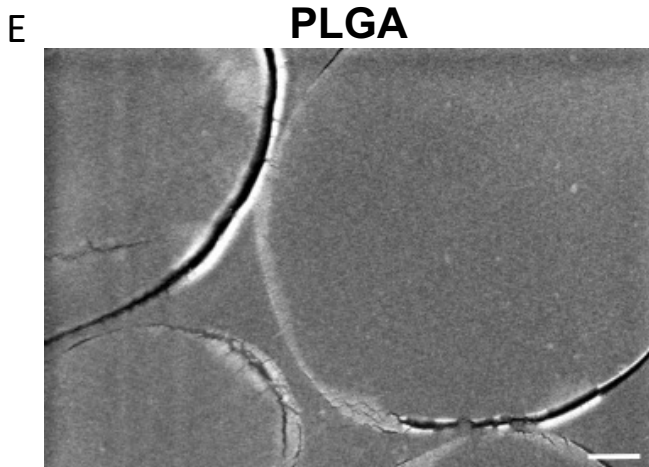
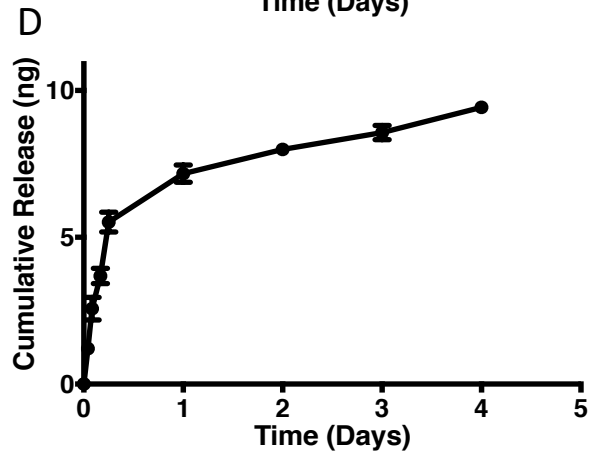
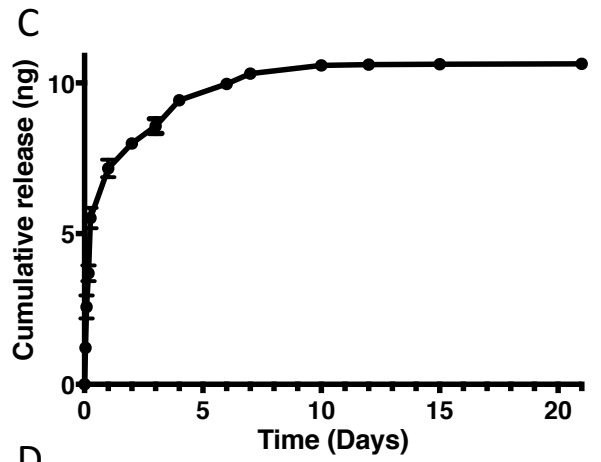
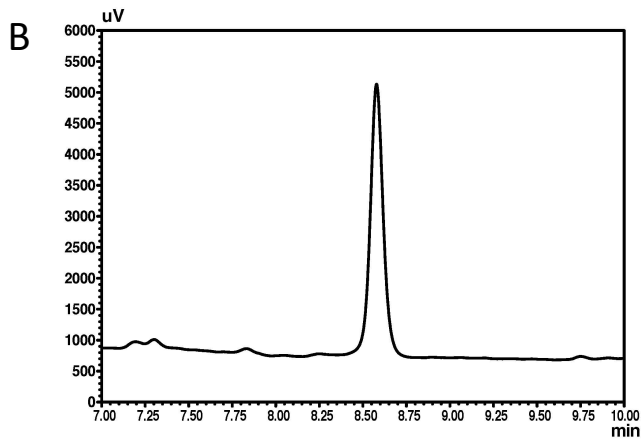
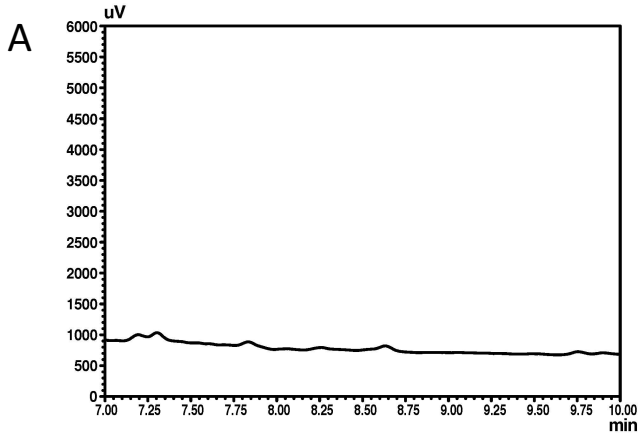


Figure S2

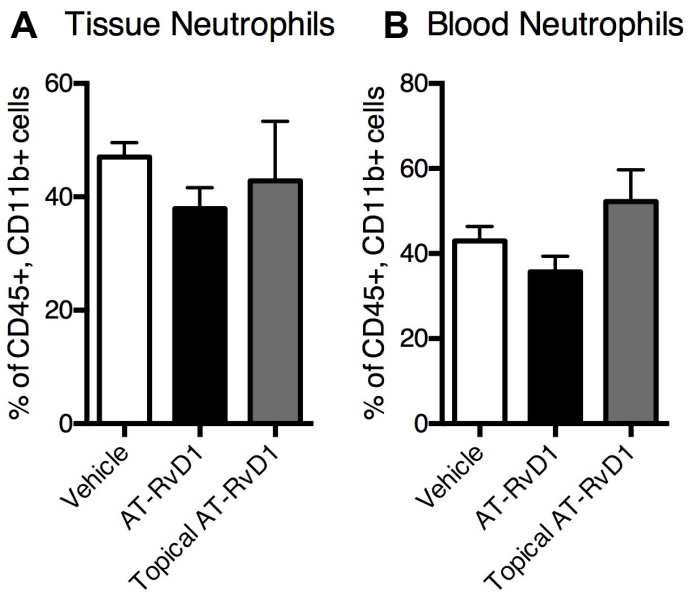


Figure S3

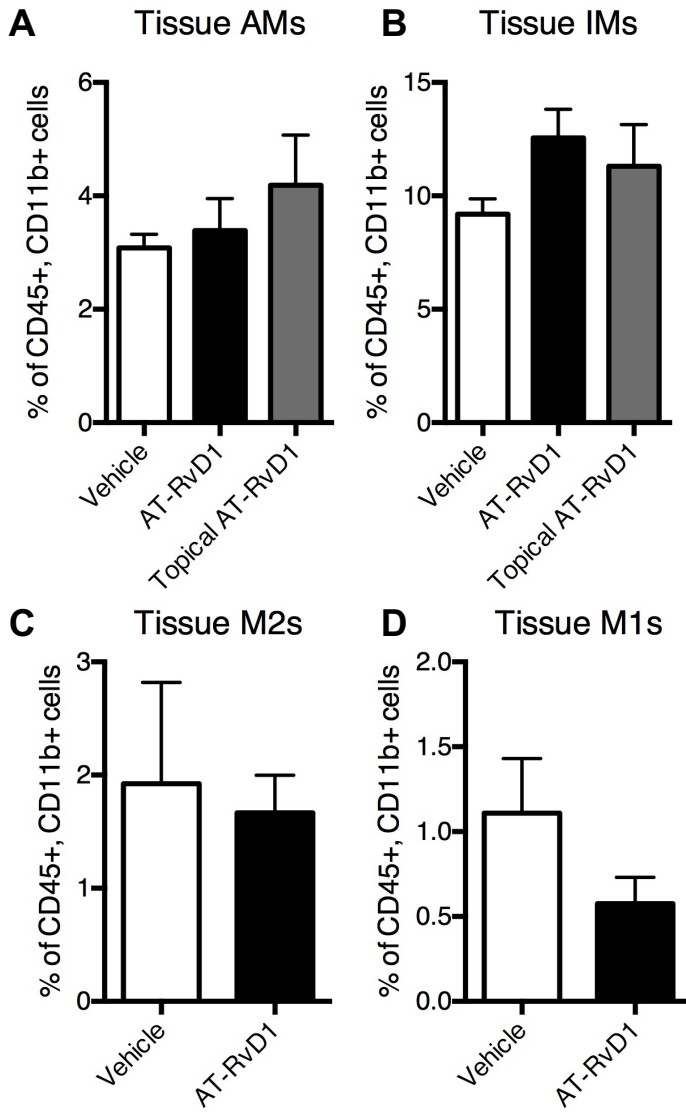


Figure S4

