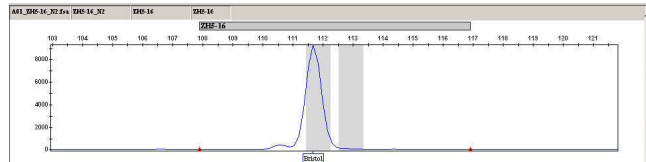


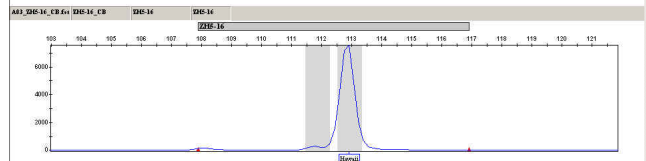
## Supplementary Figure 7: Accuracy of Allele Calling

### *C. elegans* ZH5-16

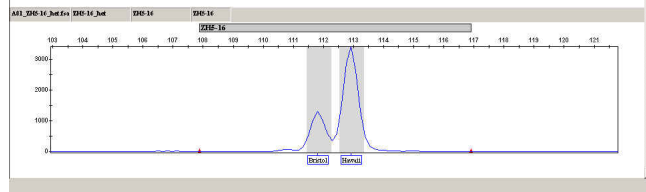
genotype: Bristol  
FLP: ZH5-16  
allele length: 112 bp



genotype: Hawaii  
FLP: ZH5-16  
allele length: 113 bp

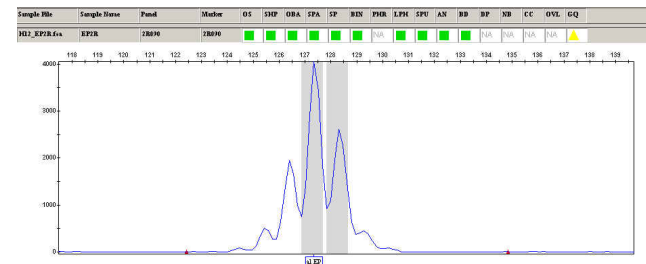


genotype: Bristol/Hawaii  
FLP: ZH5-16  
allele length: 112/113 bp



### *Drosophila* 2R090

genotype: EP2R  
FLP: 2R090  
allele length: 127 bp



genotype: FRT2R  
FLP: 2R090  
allele length: 128 bp

