

**SUPPLEMENTARY FIGURES**

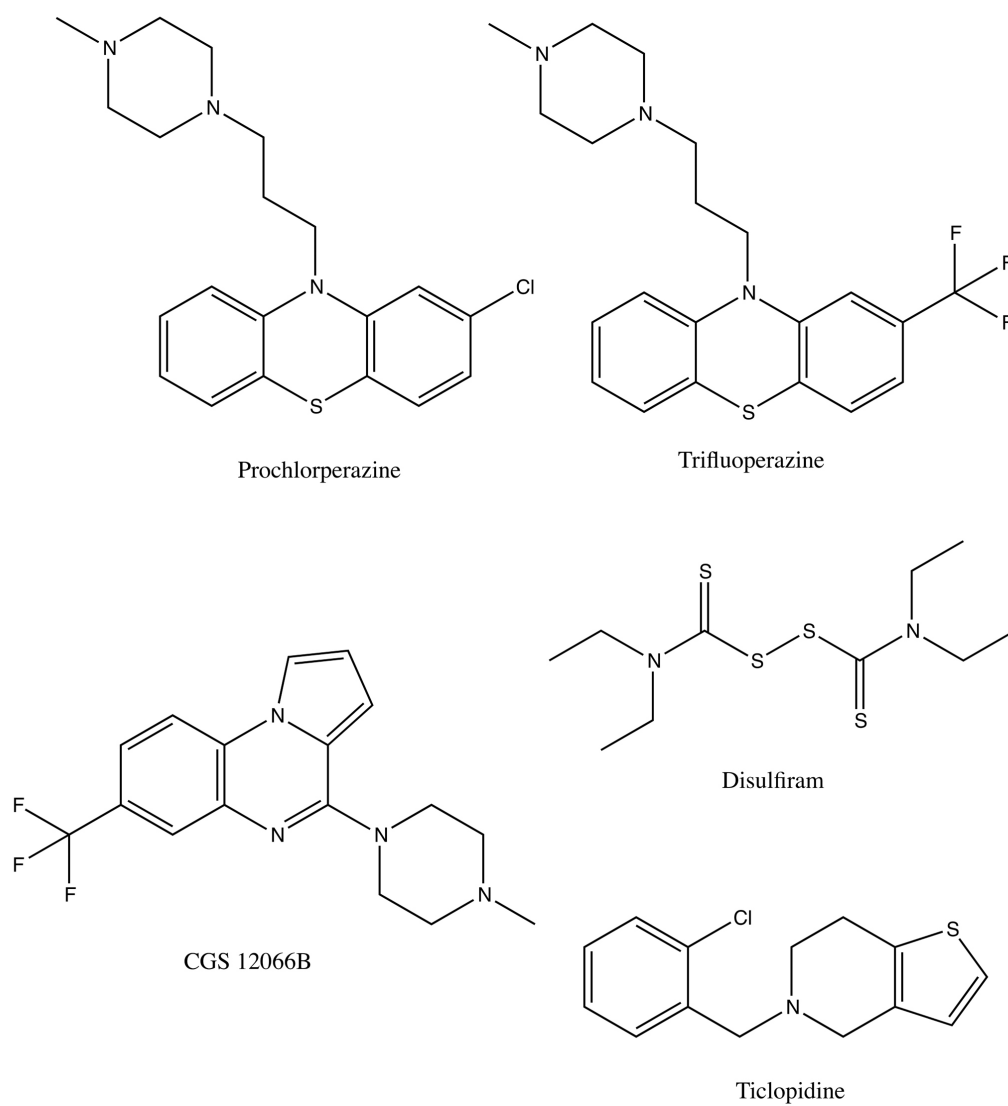
**for**

**Chemical inhibitors of *Candida albicans* hyphal morphogenesis target  
endocytosis**

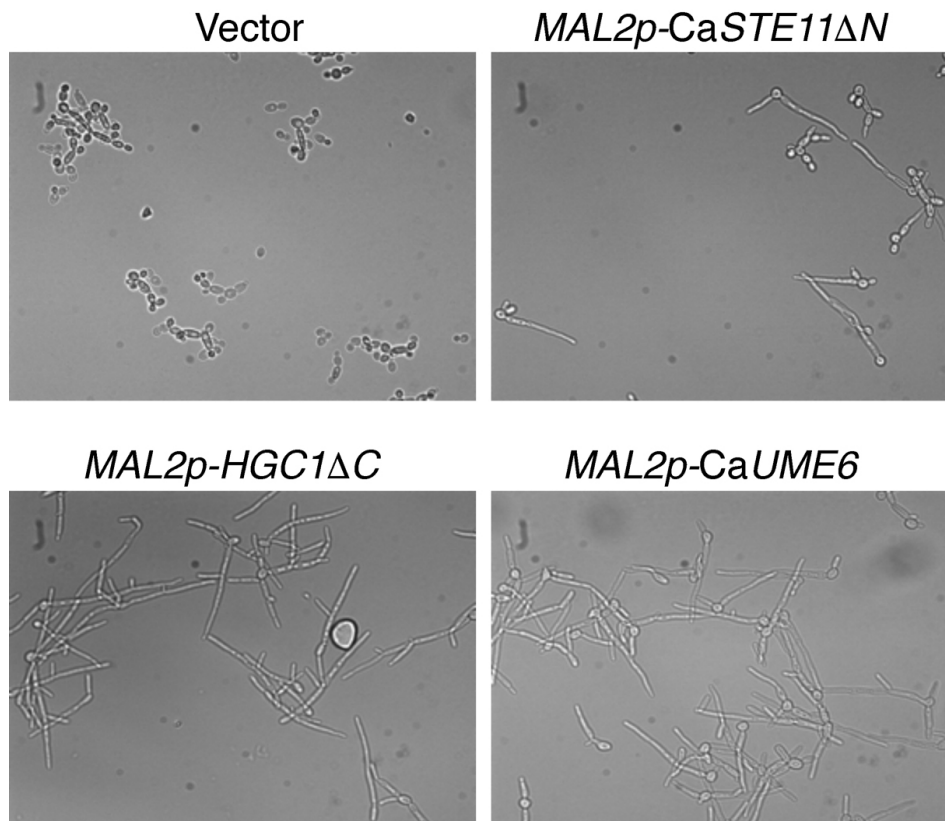
Hagit Bar Yosef<sup>1#</sup>, Nora Vivanco Gonzalez<sup>2#</sup>, Shay Ben Aroya<sup>3</sup>, Stephen J. Kron<sup>\*2</sup>  
and Daniel Kornitzer<sup>\*1</sup>

<sup>1</sup>Department of Molecular Microbiology, B. Rappaport Faculty of Medicine,  
Technion – I.I.T. and the Rappaport Institute for Research in the Medical Sciences,  
Haifa 31096, Israel; <sup>2</sup>Department of Molecular Genetics and Cell Biology, University  
of Chicago, Chicago IL 60637, USA; and <sup>3</sup>Faculty of Life Sciences, Bar-Ilan  
University, Ramat-Gan 52900, Israel

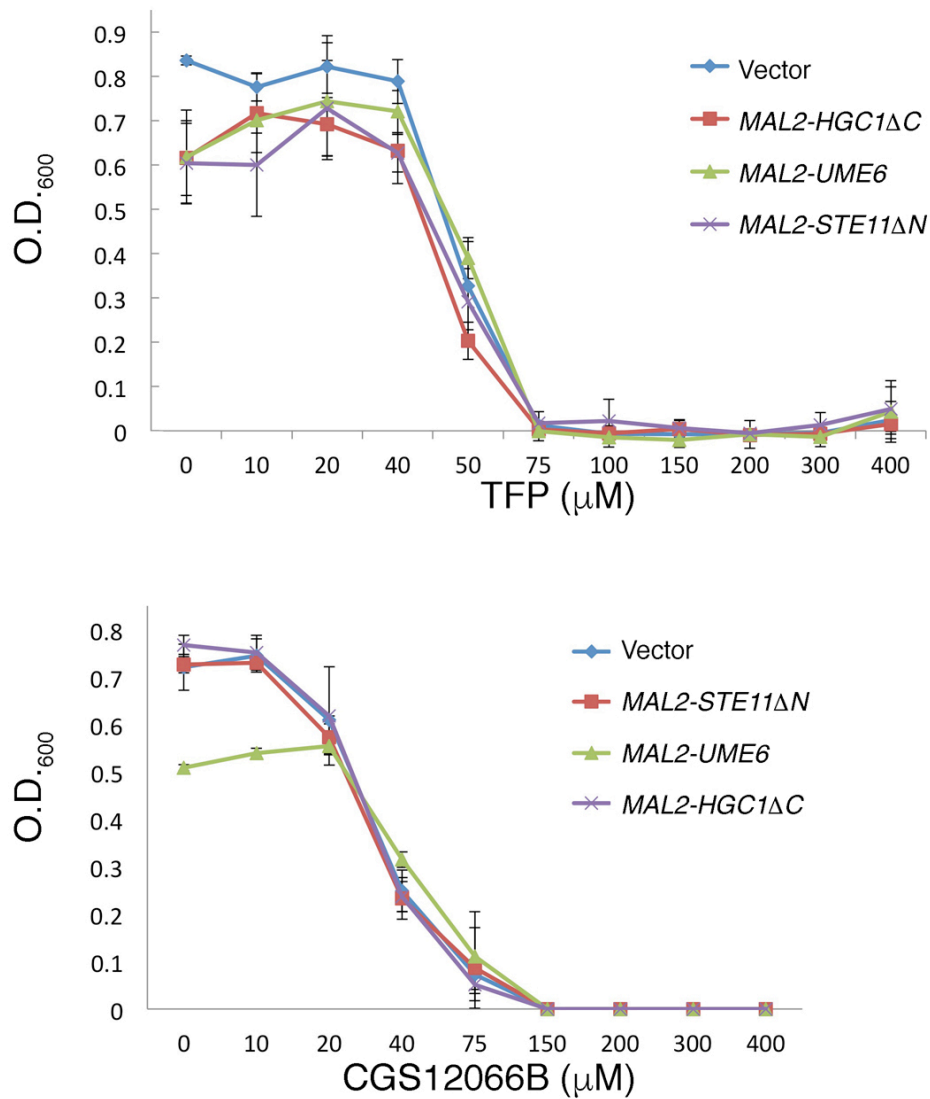
<sup>#</sup> Equal contribution



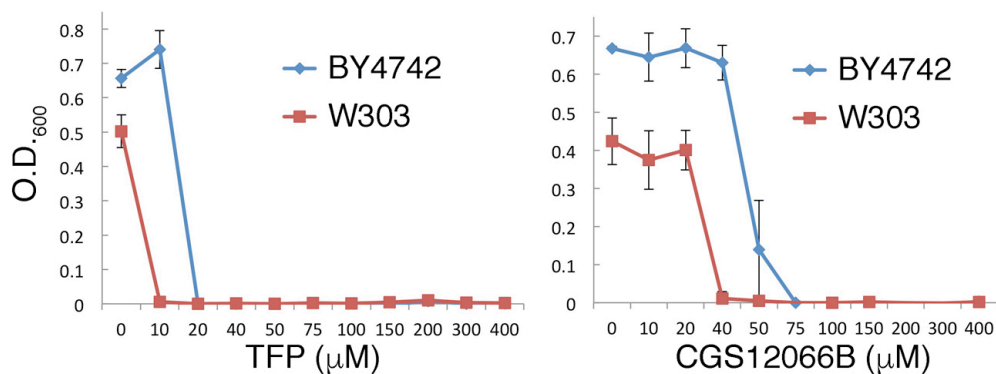
**Fig S1.** Chemical structure of the five most active compounds suppressing hyphal morphogenesis.



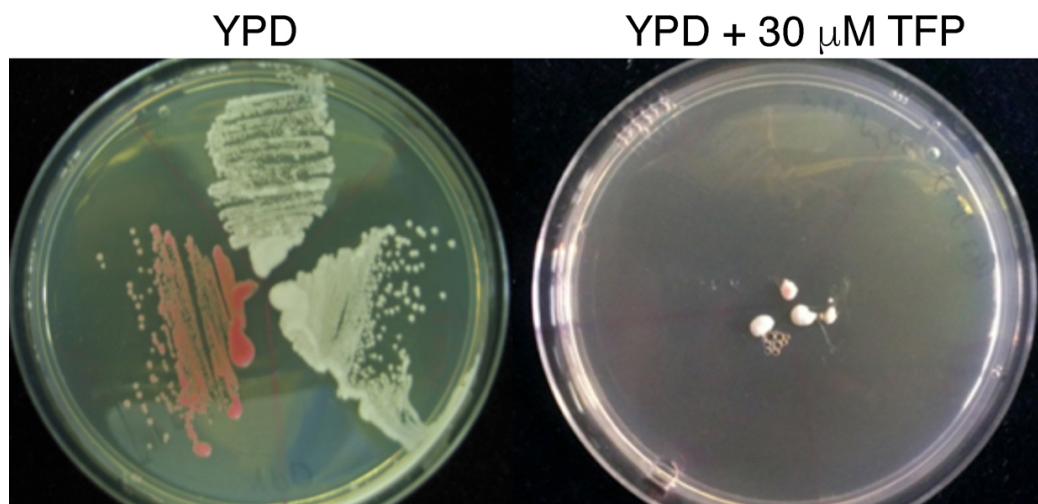
**Figure S2.** *C. albicans* SN148 carrying the vector plasmid BES119 (KC685) or *MAL2p-STE11ΔN* (KC753), *MAL2p-UME6* (KC763) and *MAL2p-HGC1 ΔC* (KC754) were grown overnight in YPD + 2% raffinose, then diluted into medium containing 2% maltose and photographed after growth for 5 hours. Pictures were taken with a 40X objective equipped with DIC optics.



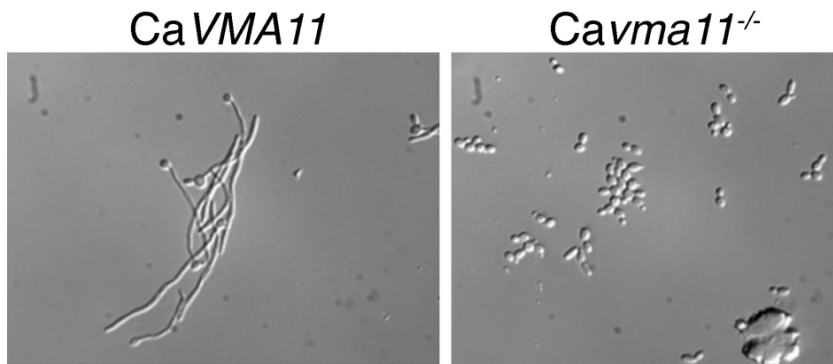
**Fig S3.** *C. albicans* SN78 carrying the vector plasmid BES119 (KC685) or *MAL2p-STE11ΔN* (KC753), *MAL2p-UME6* (KC763) and *MAL2p-HGC1 ΔC* (KC754) were grown overnight in medium with maltose at 30°C in the presence of TFP or CGS 12066B at increasing concentration, as indicated. The results are the mean ± S.D. of the optical density of three cultures each.



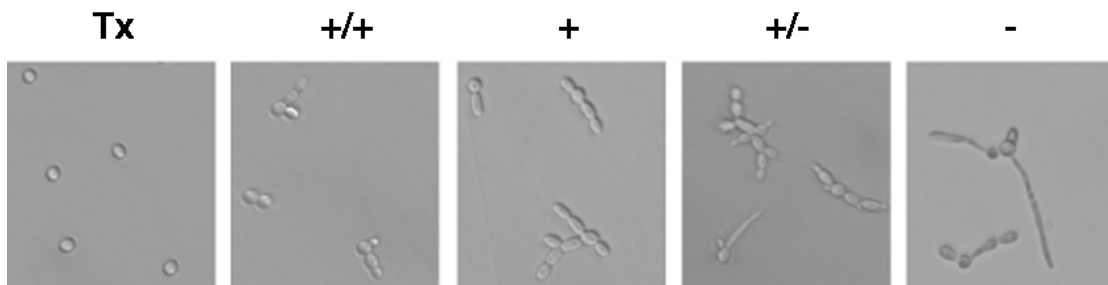
**Fig. S4.** MIC test of Trifluoperazine and CGS 12066B on *S. cerevisiae*. The indicated strains of *S. cerevisiae* were grown overnight in YPD medium at 30°C in the presence of TFP or CGS 12066B at increasing concentrations. The results are the mean ± S.D. of the optical density of three cultures each.



**Fig. S5.** TFP toxicity on plates. Three strains of *S. cerevisiae* (Top: BY4741, right: BY4742, left: W303) were streaked on YPD or YPD + 30μM TFP as indicated, and grown for 2 days at 30°C.



**Fig. S6.** Effect CaVMA11 deletion on hyphal morphology. Strains of *C. albicans* wild type (CAF3-1) and a VMA11 knockout strain (KC280) were grown in YPD + 10% FCS for 5 hours at 37°C. Pictures were taken with a 40X objective.



**Fig. S7.** Examples of the assignment of hyphal morphologies by visual inspection as used in the screen for hyphal inhibitors.