

Monocyte adhesion to atherosclerotic matrix proteins is enhanced by Asn-Gly-Arg deamidation

Bamaprasad Dutta^{1a}, Jung Eun Park^{1a}, Subodh Kumar¹, Piliang Hao¹, Xavier Gallart-Palau¹, Aida Serra¹, Yan Ren¹, Vitaly Sorokin^{2,3}, Chuen Neng Lee^{2,3}, Hee Hwa Ho⁴, Dominique de Kleijn³, and Siu Kwan Sze^{1*}

¹School of Biological Sciences, Nanyang Technological University, 60 Nanyang Drive, Singapore 637551.

²Department of Surgery, Yong Loo Lin School of Medicine, National University of Singapore, Singapore 119228.

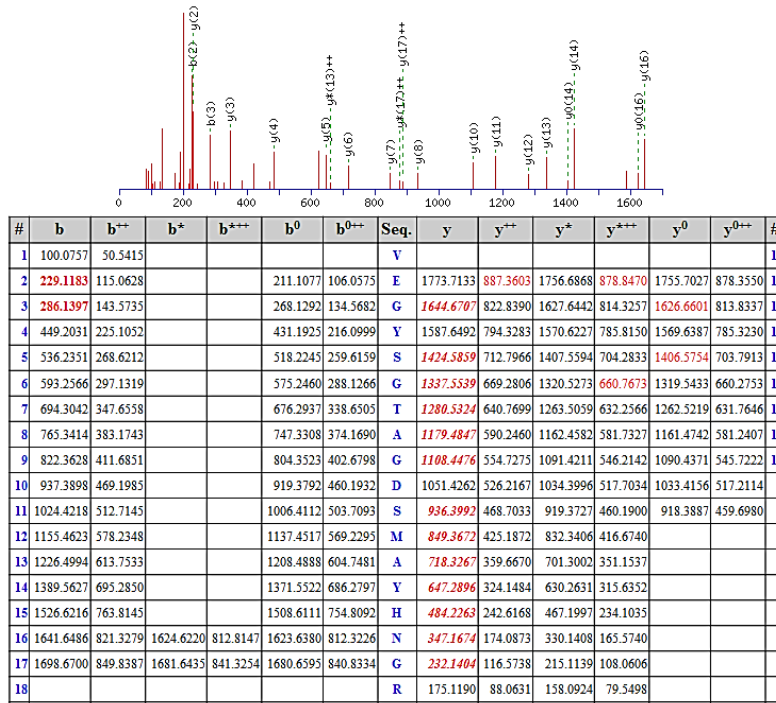
³Department of Cardiac, Thoracic and Vascular Surgery, National University Heart Centre, National University Health System, Singapore 119228.

⁴Department of Cardiology, Tan Tock Seng Hospital, 11 Jalan Tan Tock Seng, Singapore 308433.

^a These authors contributed equally to this work.

Running Title: IsoDGR enhances monocyte adhesion to ECM proteins

Deamidated VEGYSGTAGDSMAYHNGR



Non-deamidated VEGYSGTAGDSMAYHNGR

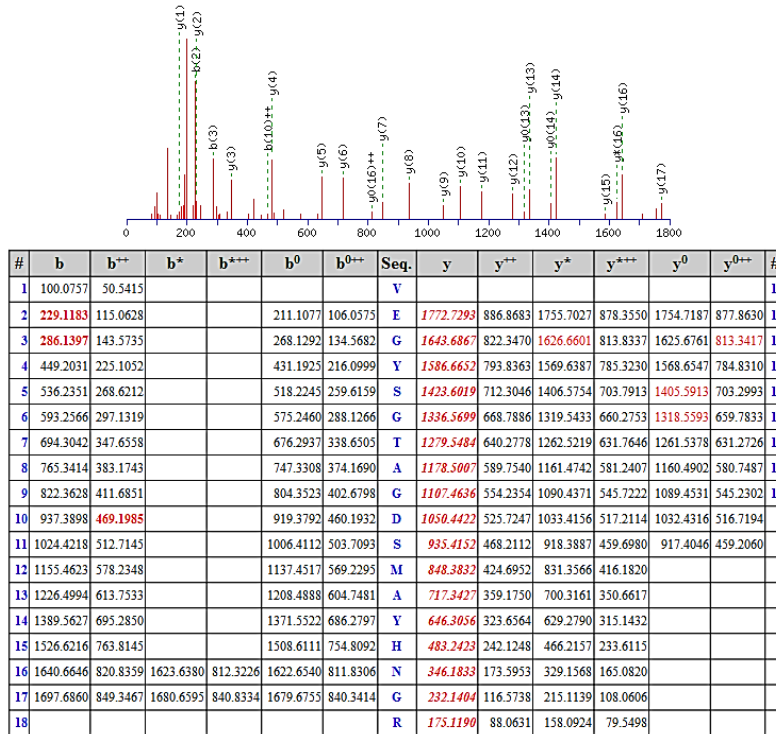
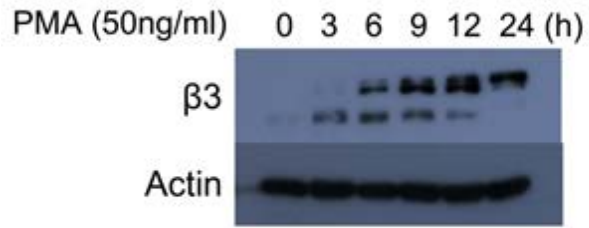


Figure S1: MS/MS spectra of TNC peptides showing both the deamidated variant (VEGYSGTAGDSMAYHN#GR) and native form (VEGYSGTAGDSMAYHNGR) as annotated by Mascot database search software. The deamidation site was identified with high confidence as being located between sequences (y2–y8, y10–y14 and y6). Each of the fragmented y-ions containing a deamidation site (y2 – y8) displayed a characteristic mass increase of 0.984 Da compared with the unmodified peptide.

a)



b)

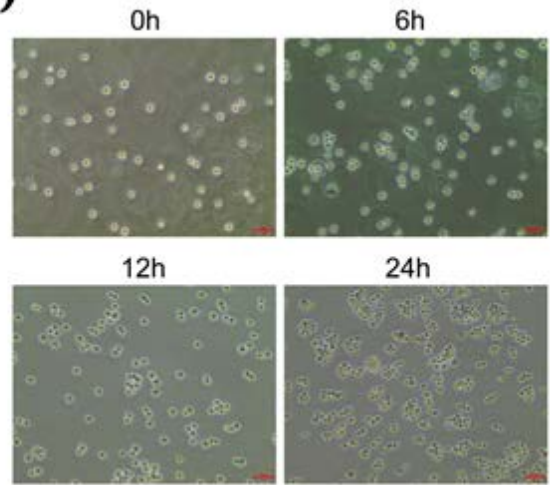


Figure S2. (a) Western blot analysis of integrin $\beta 3$ and β -Actin protein expression in U937 pre-monocytic cells stimulated with 50 ng/ml PMA for the indicated times. The full length blot was included in the Next page. (b) Macrophage-like morphology of U937 cells after 6h stimulation with PMA as visualized by microscopy.

Full unedited blot for Figure S2a: Western blot analysis of integrin $\beta 3$ and β -Actin protein expression in U937 pre-monocytic cells stimulated with 50 ng/ml PMA for the indicated times.

