

Supporting information - A comparative study of five physiological key parameters between four different human trophoblast-derived cell lines

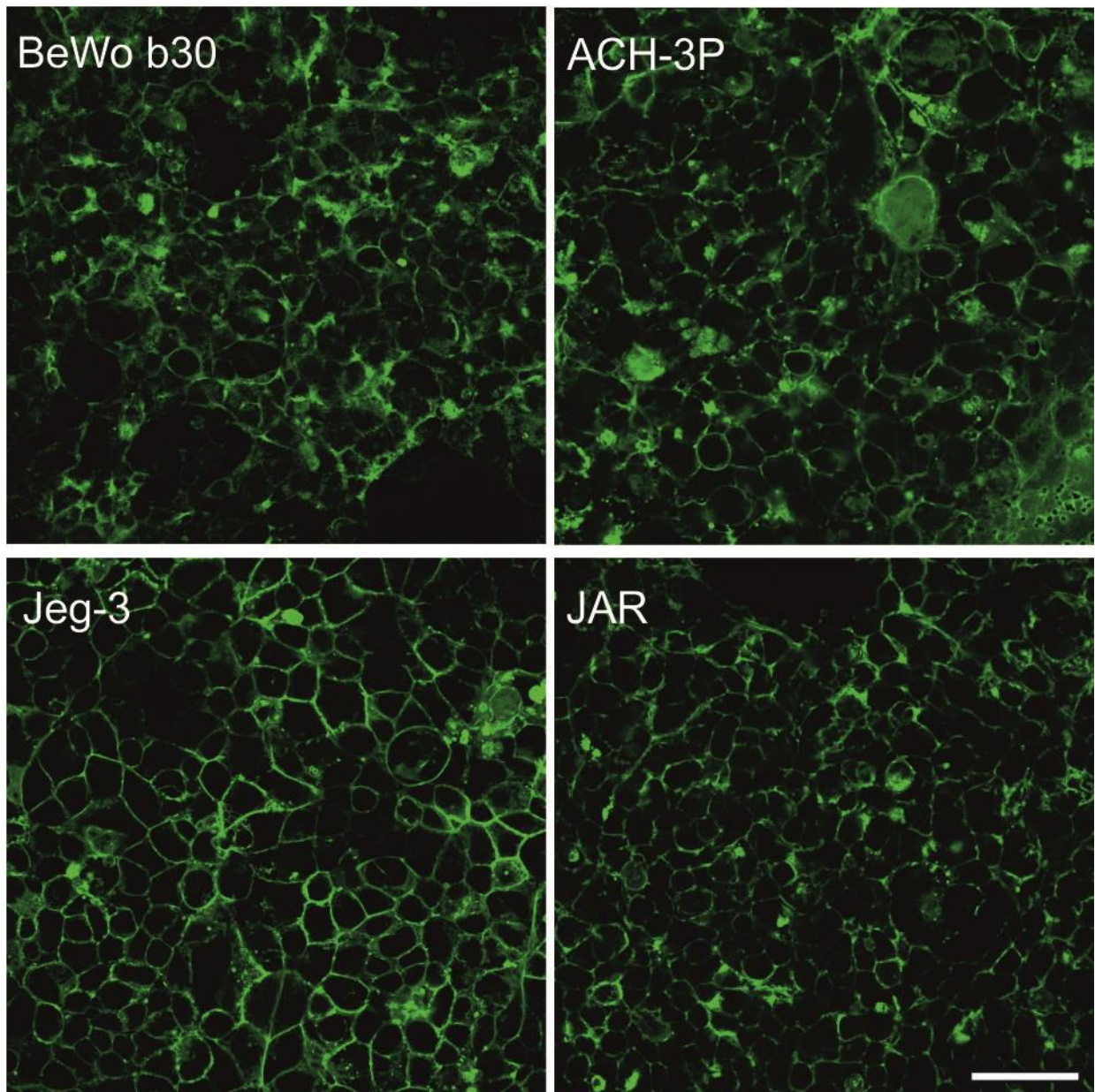
Mario Rothbauer ^{1,*}, Nilaypatel Kumar ³, Hajnalka Gondola¹, Monika Siwetz², Berthold Huppertz ² and Peter Ertl ¹

¹ Vienna University of Technology, Faculty of Technical Chemistry, Institute of Applied Synthetic Chemistry & Institute of Chemical Technologies and Analytics, Getreidemarkt 9, 1060 Vienna, Austria

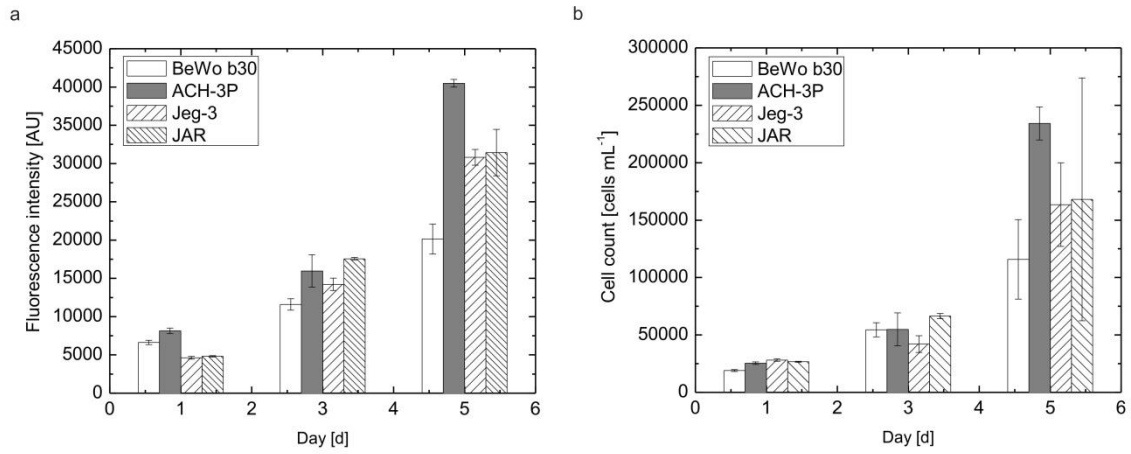
² Medical University of Graz, Institute of Cell Biology, Histology and Embryology, Harrachgasse 21/VII, 8010 Graz, Austria

³ University of Vienna, Department of Pharmacognosy, Althanstrasse 14, 1090 Vienna, Austria

* mario.rothbauer@tuwien.ac.at



SI Fig. 1 Immunofluorescence stain for ZO-1 of placental cell models grown on 3 μm transwell 3 inserts at day 7 post-seeding.



SI Fig. 2 (a) Metabolic activity and (b) proliferation of placental cell models at day 1, 3 and 5 post seeding. Data points are presented as mean values \pm SD for $n = 3$