

Supporting Materials

ER stress-dependent release of mitochondrial DNA enriched microparticles contributes to acute-on-chronic alcoholic neutrophilia and hepatotoxicity

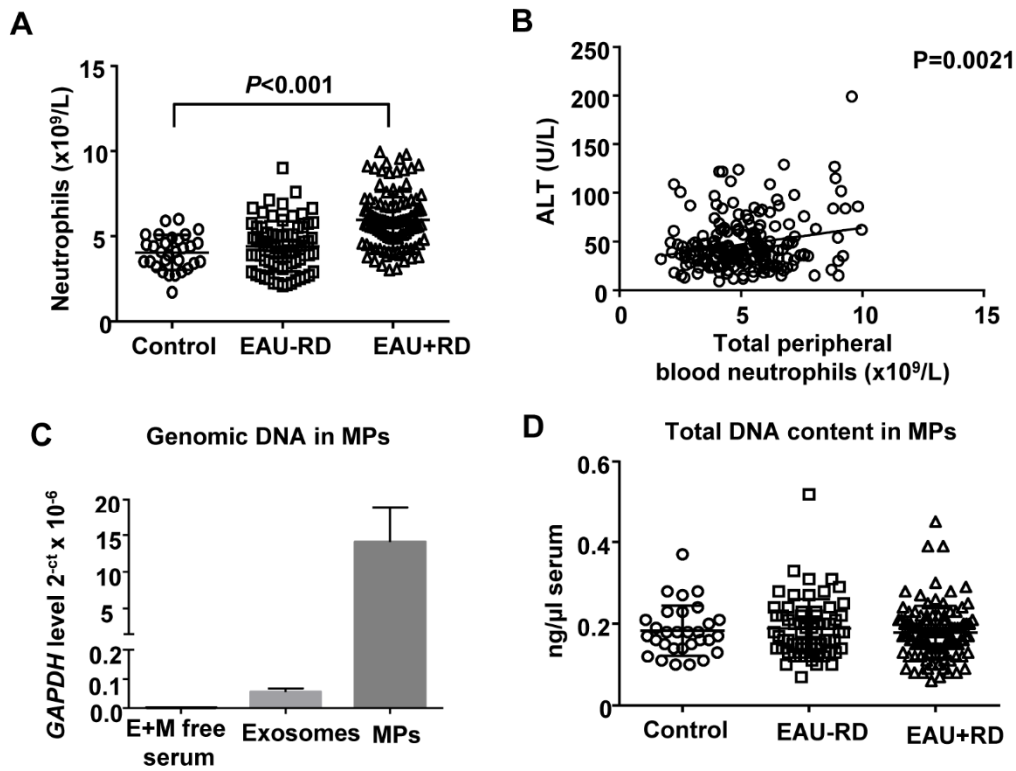
Yan Cai,^{1*} Ming-Jiang Xu,^{1*} Erik H. Koritzinsky,² Zhou Zhou,¹ Wei Wang,¹ Haixia Cao,¹ Peter S.T. Yuen,² Ruth A. Ross³, Robert A. Star,² Suthat Liangpunsakul^{3,4}, Bin Gao¹

Supplemental Table 1: Primer sequences for real-time PCR.

Genes	Forward primer (5'-3')	Reverse primer (5'-3')
<i>Bcl-xl</i>	GCTGCATTGTTCCCGTAGAG	GTTGGATGGCCACCTATCTG
<i>Bcl2</i>	GGTCTTCAGAGACAGCCAGG	GATCCAGGATAACGGAGGCT
<i>Bak</i>	AGACCTCCTCTGTGTCCTGG	AAAATGGCATCTGGACAAGG
<i>Bax</i>	GATCAGCTCGGGCACTTTAG	TTGCTGATGGCAACTTCAAC
<i>Bim</i>	GCTCCTGTGCAATCCGTATC	GCCCCTACCTCCCTACAGAC
<i>Dr5</i>	GGTCCTCTTGATGGGCTCTC	GTTGCTGCTTGCTGTGCTAC
<i>Trail-r2</i>	GGTCCTCTTGATGGGCTCTC	GTTGCTGCTTGCTGTGCTAC
<i>Chop</i>	GACCAGTTTCTGCTTTCAGG	CAGCGACAGAGCCAGAATAA
<i>Ero1a</i>	CACAGGTACAGTCGTCCAGGT	CTTGCTCGTTGGACTCCTG
<i>Ero1b</i>	TGACAAAAAGGGGGCCAAGT	TATCGCACCCAACACAGTCC
<i>Pdi</i>	CCCCGTGTGTGGAAAAGAGA	AGCCACAGAGTAATGTGCC
<i>Gadd34</i>	GGAGATAGAAGTTGTGGGCG	TTTTGGCAACCAGAACCG
<i>Grp78</i>	ATCTTTGGTTGCTTGTCGCT	ATGAAGGAGACTGCTGAGGC
<i>Casp1</i>	TGGAAATGTGCCATCTTCTTT	TCAGCTCCATCAGCTGAAAC
<i>Nlrp3</i>	AAGTAAGGCCGGAATTCACC	AAAATGCCTTGGGAGACTCA
<i>IL-1β</i>	TCGCTCAGGGTCACAAGAAA	CATCAGAGGCAAGGAGGAAAAC
<i>Ccl2</i>	ATTGGGATCATCTTGCTGGT	CCTGCTGTTACAGTTGCC
<i>Ccl3</i>	GTGGAATCTTCCGGCTGTAG	ACCATGACACTCTGCAACCA
<i>Ccl4</i>	GAAACAGCAGGAAGTGGGAG	CATGAAGCTCTGCGTGTCTG
<i>Cxcl1</i>	TCTCCGTTACTTGGGGACAC	CCCACTCAAGAATGGTCGC

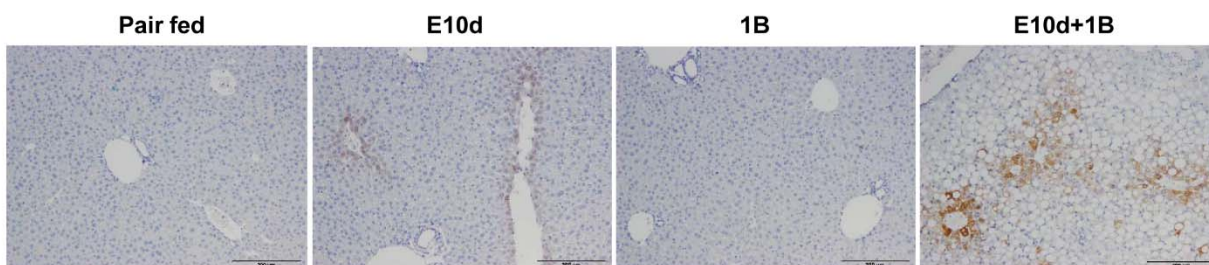
<i>Cxcl10</i>	CCTATGGCCCTCATTCTCAC	CTCATCCTGCTGGGTCTGAG
<i>Cxcl12</i>	TTTCAGATGCTTGACGTTGG	GCGCTCTGCATCAGTGAC
<i>Cer1</i>	TGCTGAGGAACTGGTCAGG	AGGCCAGAAACAAAGTCTG
<i>Cer2</i>	AGCACATGTGGTGAATCCAA	TGCCATCATAAAGGAGCCA
<i>Cer3</i>	CATAGGGTGTGGTCTCAAAGC	AAAGGACTTAGCAAAATTCACCA
<i>Cer5</i>	GCAGGGTGCTGACATACCAT	ATCCGTTCCCCCTACAAGAG
<i>Cxcr5</i>	TCCTGTAGGGGAATCTCCGT	ACTAACCCCTGGACATGGGC
<i>Cxcr6</i>	AAATCTCCCTCGTAGTGCCC	TGGAACAAAGCTACTGGGCT
<i>IL-6</i>	ACAAGTCGGAGGCTTAATTACACAT	TTGCCATTGCACAACTCTTTTC
<i>IL-4</i>	CGAGCTCACTCTCTGTGGTG	TGAACGAGGTCACAGGAGAA
<i>TNF-a</i>	AGGCTGCCCCGACTACGT	GACTTTCTCCTGGTATGAGATAGCAA
<i>Tnfr1</i>	ATGGATGTATCCCCATCAGC	AATGGGGGAGTGAGAGGC
<i>Tnfr2</i>	AGATCTGGCACTCGTACCCA	GTCTTCGAACTGCAGCTGTG
<i>Tnfrsf21</i>	GGCGTTGCAAAGAAACTGAT	TGGATCTACTACCGCAACGG
<i>Ifnr</i>	TAGCCAAGACTGTGATTGCGG	AGACATCTCCTCCCATCAGCAG
<i>Pai1</i>	GCCAGGGTTGCACTAAACAT	GCCTCCTCATCCTGCCTAA
<i>Tlr4</i>	TGTCATCAGGGACTTTGCTG	TGTTCTTCTCCTGCCTGACA
<i>Selp</i>	GGACACTTGATGGCTTCACA	CAGTTCATGTGCGATGAAGG
<i>Icam1</i>	CAATTTCTCATGCCGCACAG	AGCTGGAAGATCGAAAGTCCG
<i>Vcam1</i>	TCGGGCGAAAAATAGTCCTT	CCGGCATATACGAGTGTGAA
<i>F4/80</i>	CTTTGGCTATGGGCTTCCAGTC	GCAAGGAGGACAGAGTTTATCGTG
<i>Tgfb</i>	CAACCCAGGTCCTTCCTAAA	GGAGAGCCCTGGATACCAAC

Supporting Figure 1



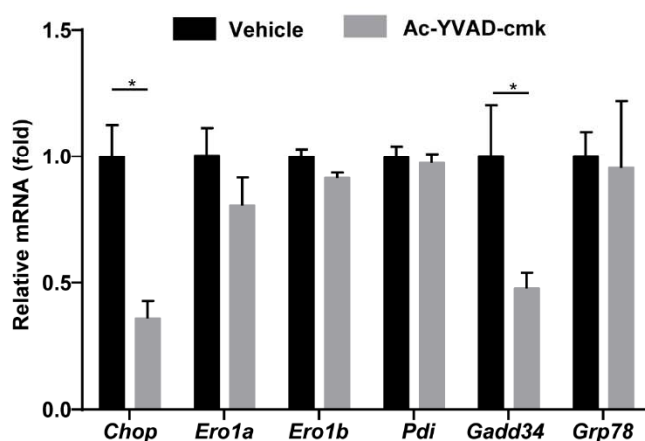
Supporting Figure 1: The number of PMN, the correlation of PMN and ALT, and the total DNA content in MPs. (A) The number of total PMN in healthy controls, EAU-RD, and EAU+RD patients. (B) The correlation between the number of PMN and serum ALT. (C) Serum exosomes and MPs were isolated from EAU+RD sera, and total DNA in the exosomes, MPs and the EVs free serum were extracted. Genomic DNA contents were assessed by checking *GAPDH* DNA level. (D) Total DNA contents in serum MPs.

Supporting Figure 2



Supporting Figure 2: E10d+1B upregulates hepatic CHOP protein expression. C57B6J mice were subjected to pair fed, chronic (E10d), one binge (1B), and E10d+1B feeding. Liver tissues were subjected to immunostaining with an anti-CHOP antibody. Representative immunostaining images are shown.

Supporting Figure 3



Supporting Figure 3: The role of caspase-1 inhibitor on ER stress-related gene expression in E10d+1B mice. Female C57BL/6J mice were undergone E10d+1B. Real-time PCR analyzed ER stress-related gene expression in the liver tissue. * $P < 0.05$. $n = 5$