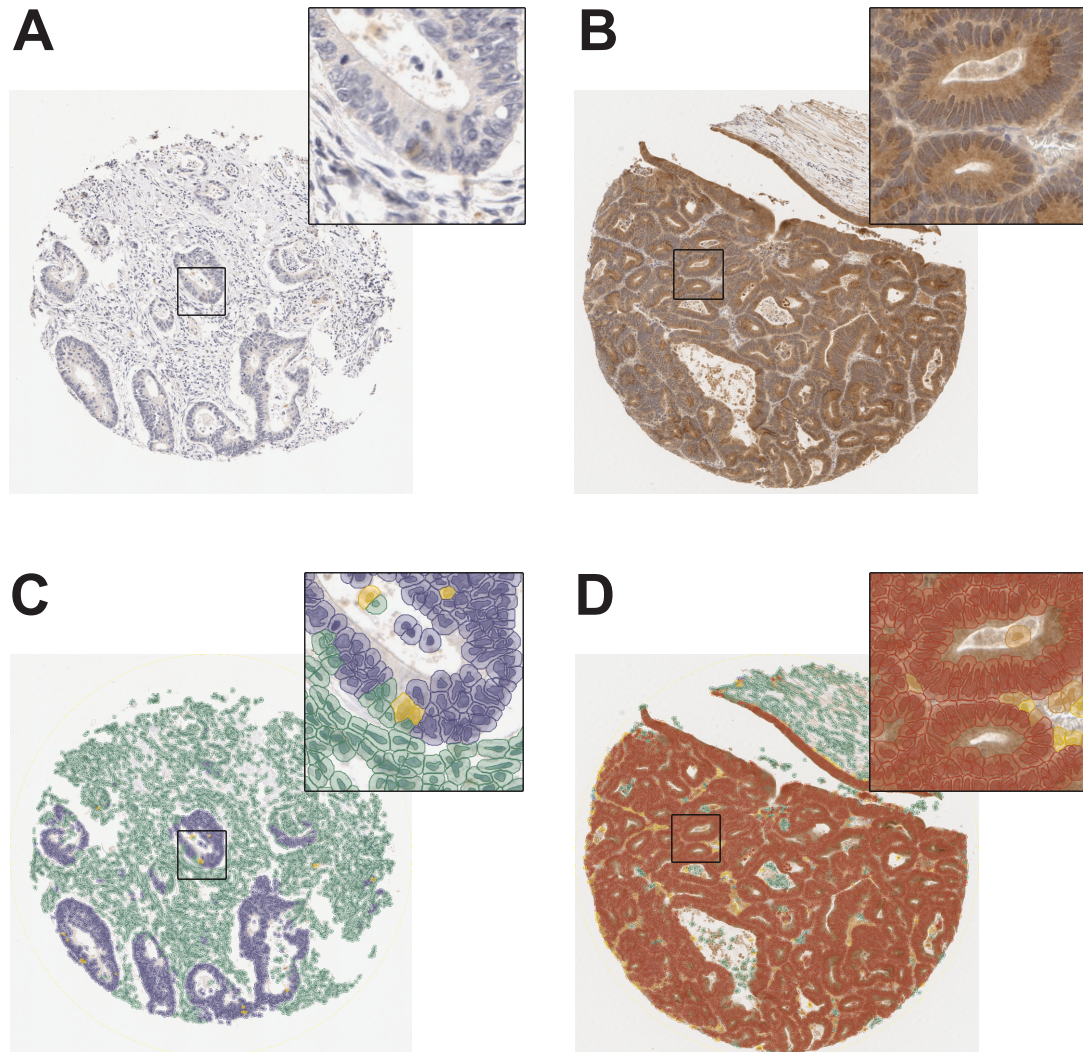


Supplementary Figure 1. HMGCR immunohistochemistry in colon cancer tissue microarrays and associated markup for digital immunoscore using QuPath image analysis software.



Detected cells are colour-coded according to their classification: green = non-tumour; blue = negatively staining tumour; yellow = weakly staining tumour; orange = moderately staining tumour; red = strongly staining tumour. (A) Original core from a tumour demonstrating HMGR immunorexpression less than the median value (HMGR-low). (B) Original core from a tumour demonstrating HMGR immunorexpression higher than the median value (HMGR-high). (C) QuPath cellular markup in the HMGR-low core. (D) QuPath cellular markup in the HMGR-high core.