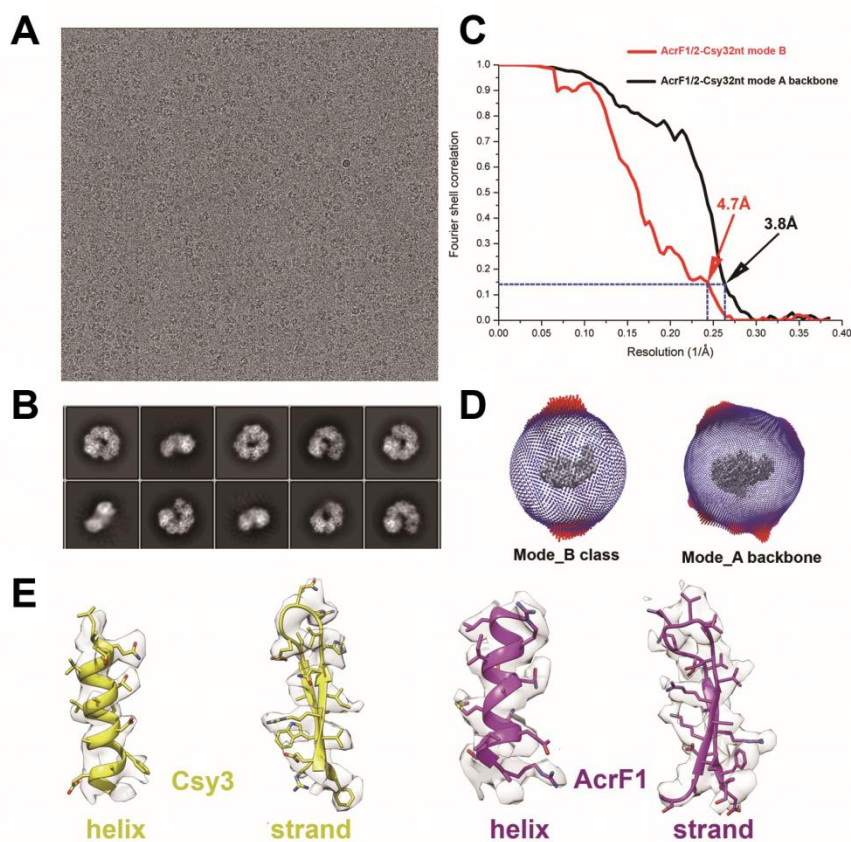


## Supplementary information, Figure S2



**Figure S2 Cryo-EM analysis of AcrF1/2-Csy32nt complex.** Representative electron micrograph (defocus  $-2.8\mu\text{m}$ ) (A) and 2D class average images (B) of AcrF1/2-Csy32nt complex. The Fourier shell correlation (FSC) curves (C) and angular distribution (D) of the two reconstructions from this dataset, mode A backbone and mode B class, which were determined at  $3.8\text{ \AA}$  and  $4.7\text{ \AA}$  resolution, respectively. The 0.143 cut-off value is indicated by blue horizontal dash lines. (E) Cryo-EM density for selected regions (representative helix and strands of AcrF1 and Csy3 subunits) of mode A backbone reconstruction.