

Supplementary information, Figure S4

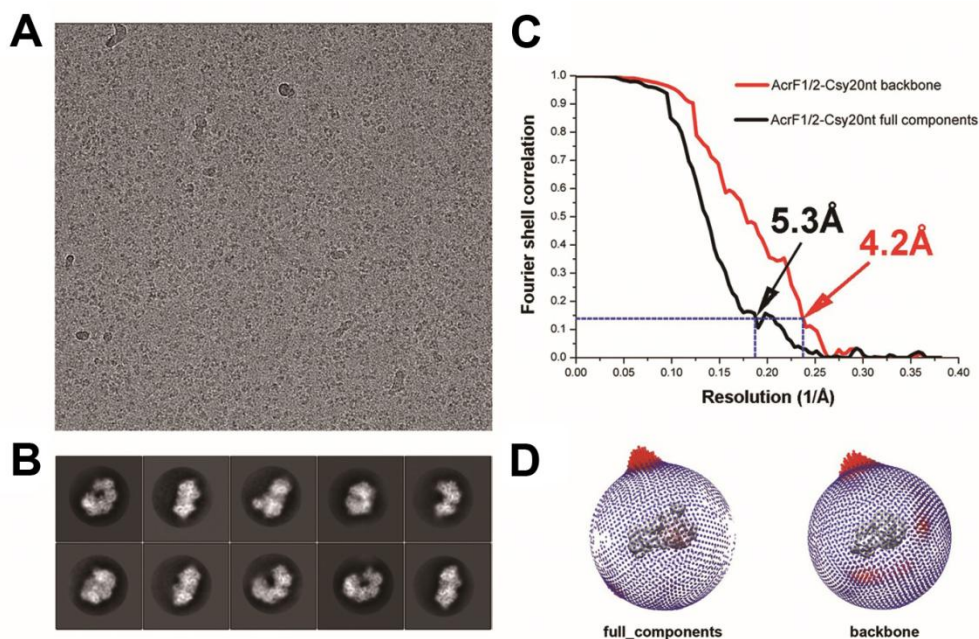


Figure S4 Cryo-EM analysis of AcrF1/2-Csy20nt complex. Representative electron micrograph (defocus -2.6 μm) (A) and 2D class average images (B) of AcrF1/2-Csy20nt complex. The Fourier shell correlation (FSC) curves (C) and angular distribution (D) of the two reconstructions from this dataset, backbone and full component class, which were determined at 4.2 \AA and 5.3 \AA resolutions, respectively. The 0.143 cut-off value is indicated by blue horizontal dash lines.