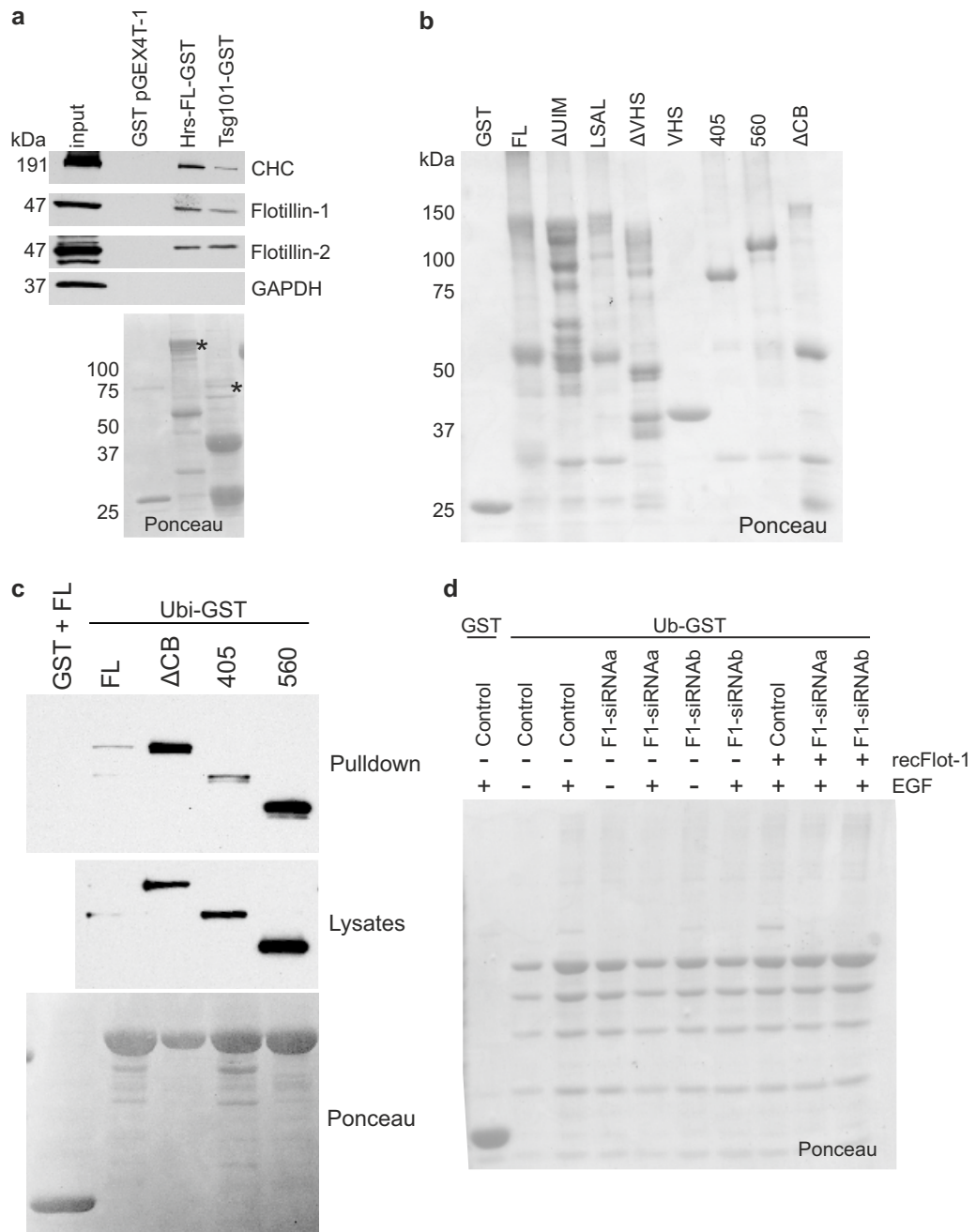


Supplementary Figure S3, Meister et al.



**Supplementary Figure S3. Flotillins interact with Hrs and Tsg101.**

(a) GST pull-down was performed from HeLa cell lysates using purified full-length Hrs-GST and Tsg-101-GST. Bound proteins (CHC, flotillin-1 and flotillin-2) were detected with specific antibodies, GAPDH was used as a negative control. (b and d) Ponceau staining of the blots shown in (b) Figure 5b, and (d) Figure 5e shows the amount of GST fusion proteins used in the said experiments. (c) Ubi-GST-pulldown of EGFP-tagged Hrs deletion mutants expressed in HeLa cells.