

GFAP staining); 1, mild gliosis with no obvious neuronal loss; 2, moderate gliosis with possible neuronal loss but mild; 3, severe injury with widespread gliosis and neuronal loss. CP severity scores (x axis) were characterized as: 1, normal (no CP); 2, mild; 3, moderate or; 4, severe CP or death. In (h), analysis of the brain stem and CP severity scores was demonstrated by Spearman's rank correlation coefficient ($R = 0.973$).

Figure 9. Cerebellar internal granule layer (IGL) and white matter (WM) tract cell density was compared between control ($n=5$) and animals that had CP ($n=4$). CP animals had decreased cell density in the IGL and WM as compared to control animals (*2-sided t-test, $p<0.05$.) Black bars are 25 μm long.

Supplementary figure 1. Scatter plots of the data from the immunohistochemical staining of females only separated by outcome. Data from animals diagnosed with no CP or mild CP ('non-CP') versus animals diagnosed with moderate or severe CP (CP) for the corona radiate (Corona Rad.), the Cortex, the cerebellum (cerebell.) and the hippocampus (Hipp.) as outlined in Figure 2. Groups were compared with a Mann-Whitney U test and p values <0.05 are indicated on the graphs.

Supplementary figure 2. Scatter plots of the data from the immunohistochemical staining of males only separated by outcome. Data from animals diagnosed with no CP or mild CP ('non-CP') versus animals diagnosed with moderate or severe CP (CP) for the corona radiate (Corona Rad.), the Cortex, the cerebellum (cerebell.) and the hippocampus (Hipp.) as outlined in Figure 2. Groups were compared with a Mann-Whitney U test and p values <0.05 are indicated on the graphs.

Females

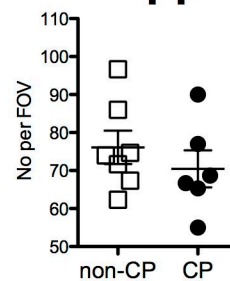
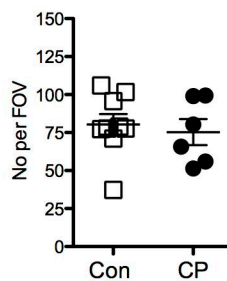
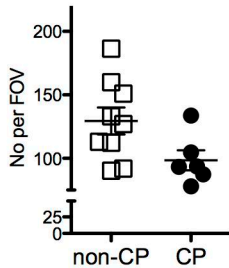
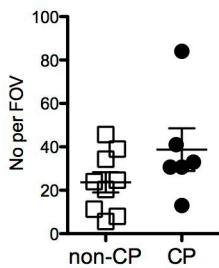
Corona Rad.

Cortex

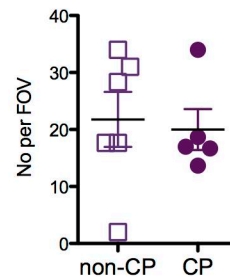
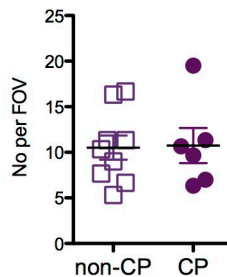
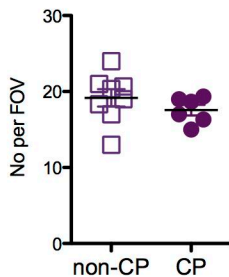
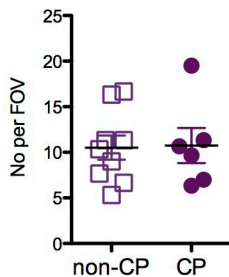
Cerebell.

Hipp.

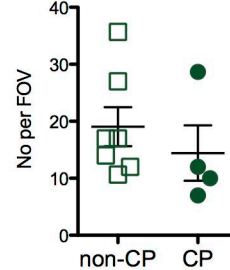
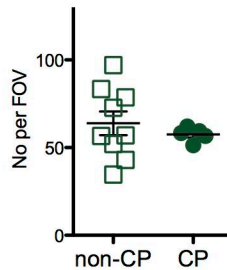
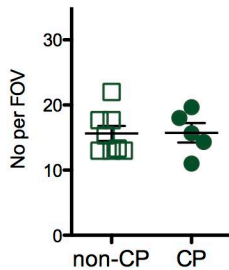
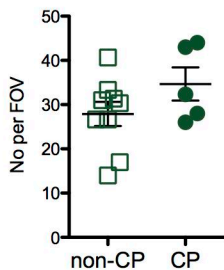
NeuN



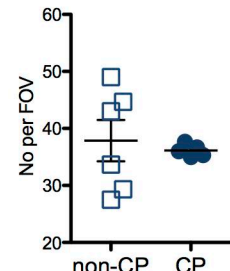
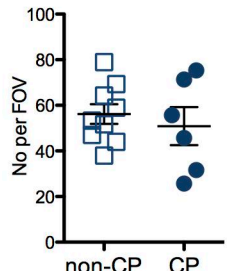
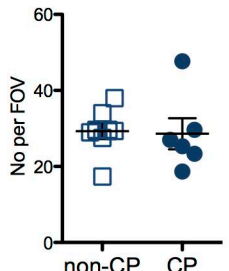
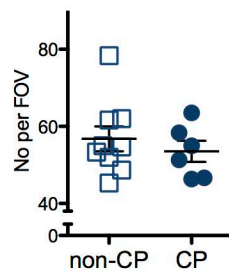
Iba1



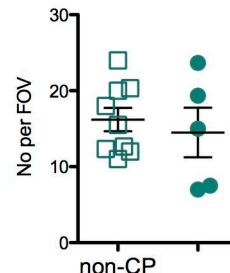
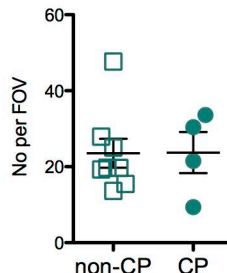
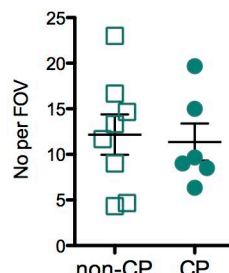
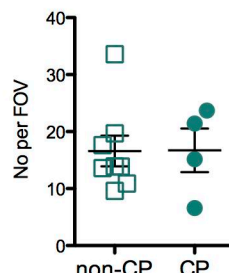
MBP



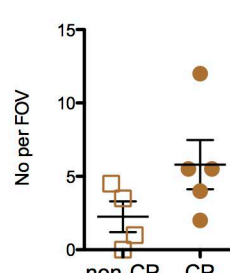
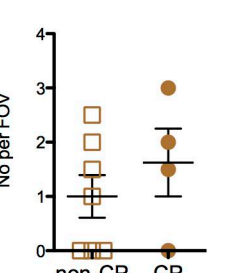
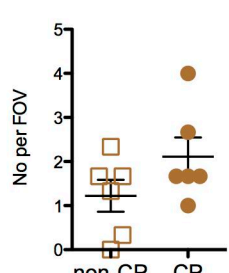
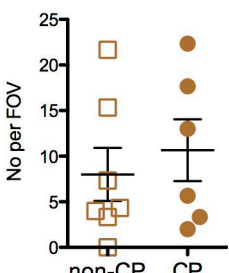
GFAP



CD68



Ki67



Males

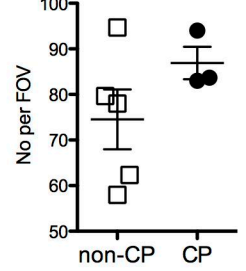
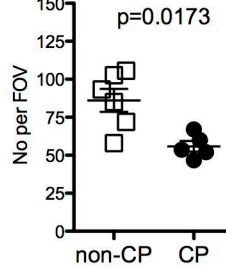
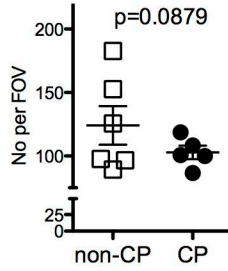
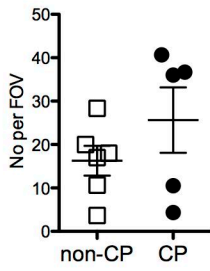
Corona Rad.

Cortex

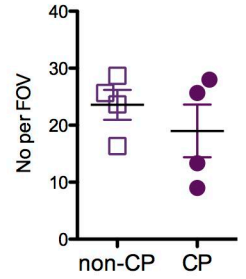
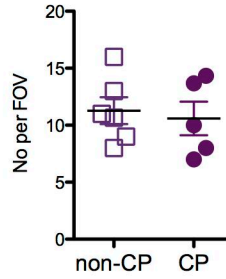
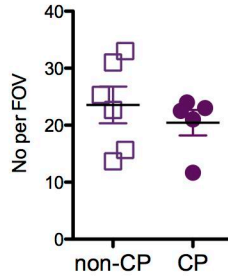
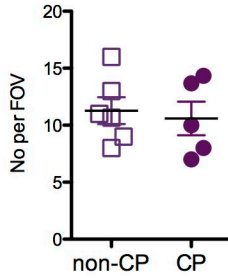
Cerebell.

Hipp.

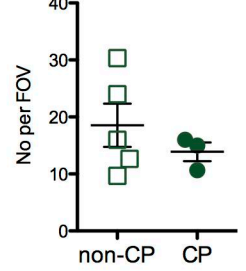
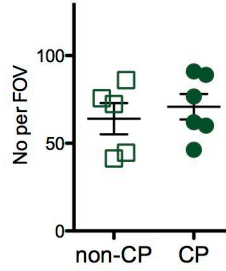
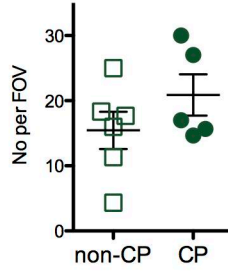
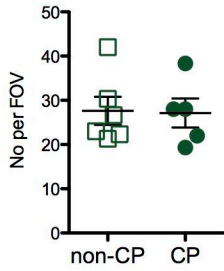
NeuN



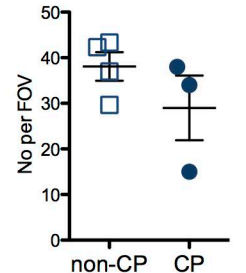
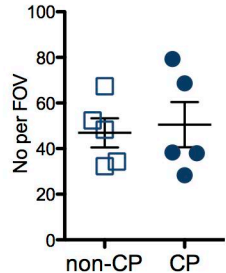
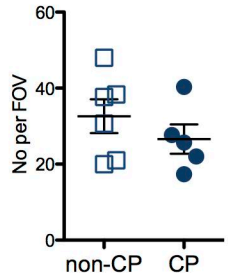
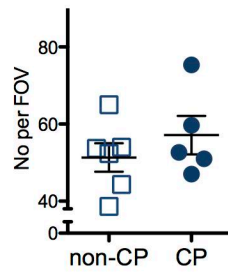
Iba1



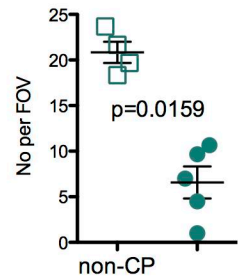
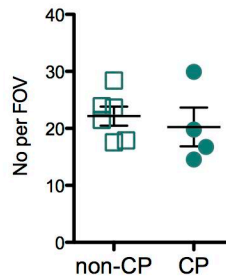
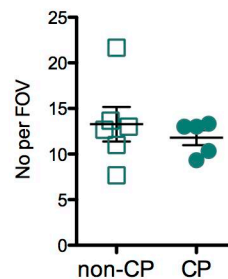
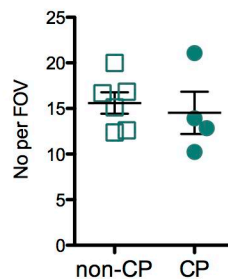
MBP



GFAP



CD68



Ki67

