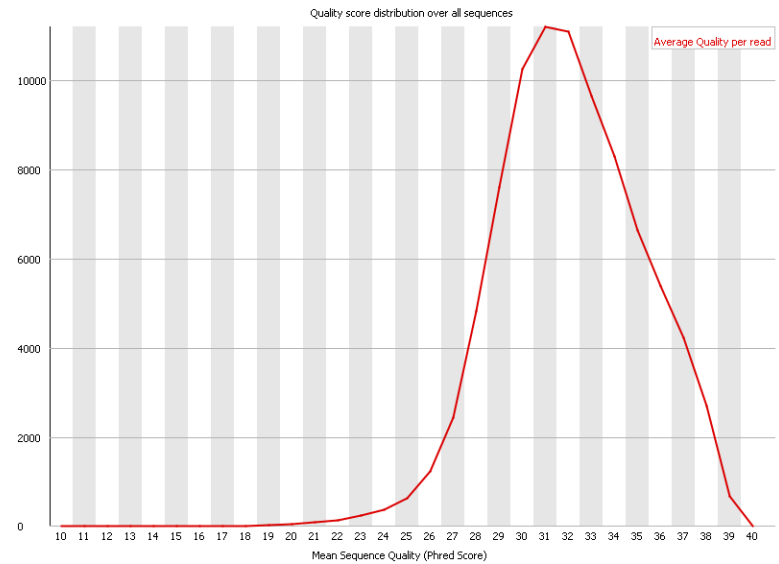
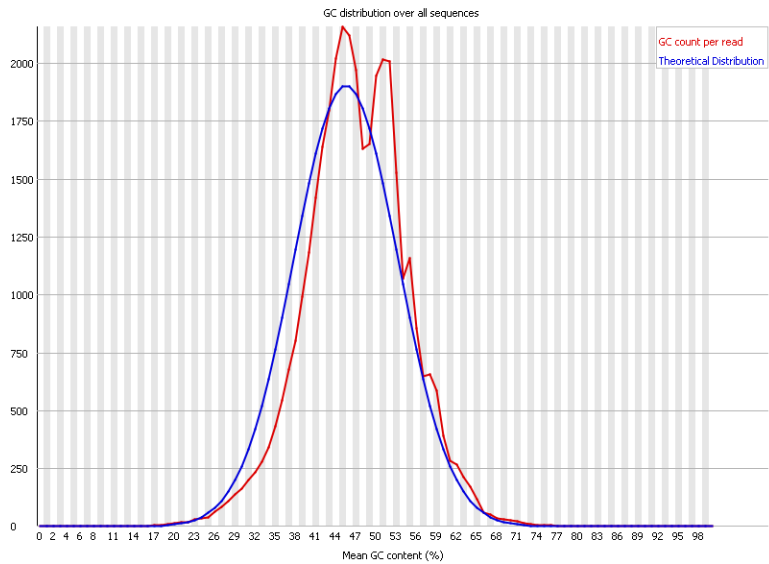
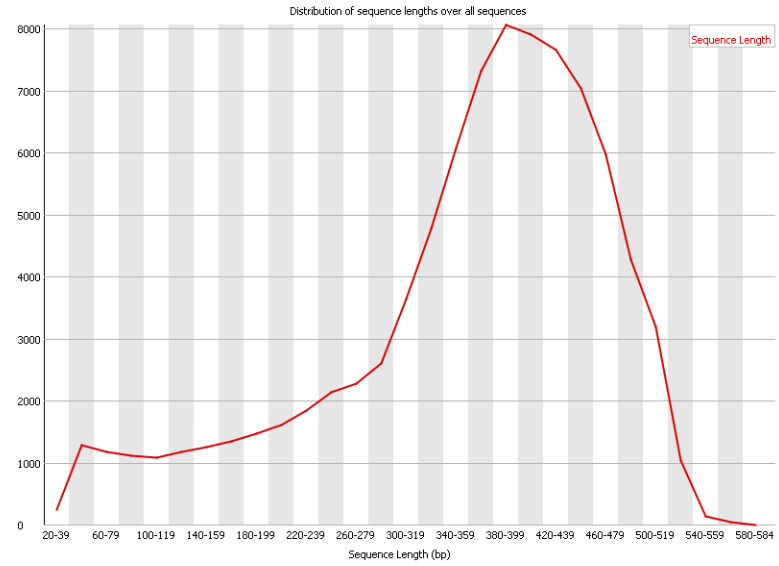
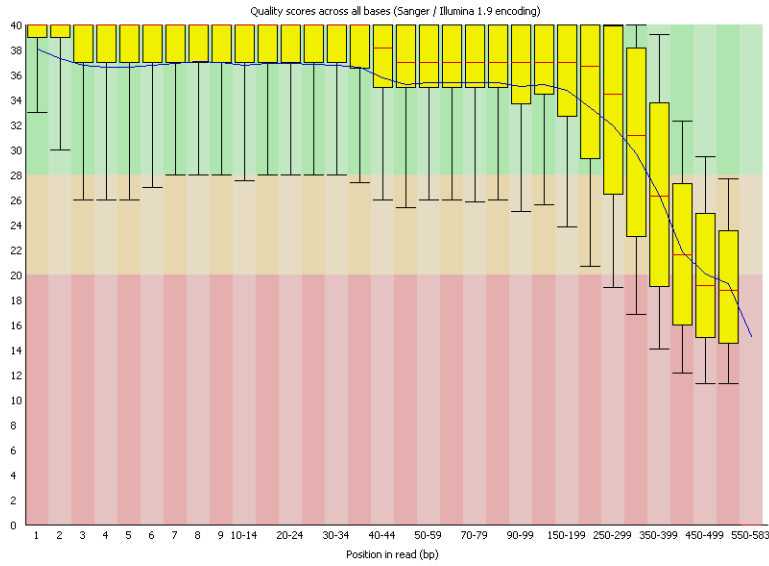


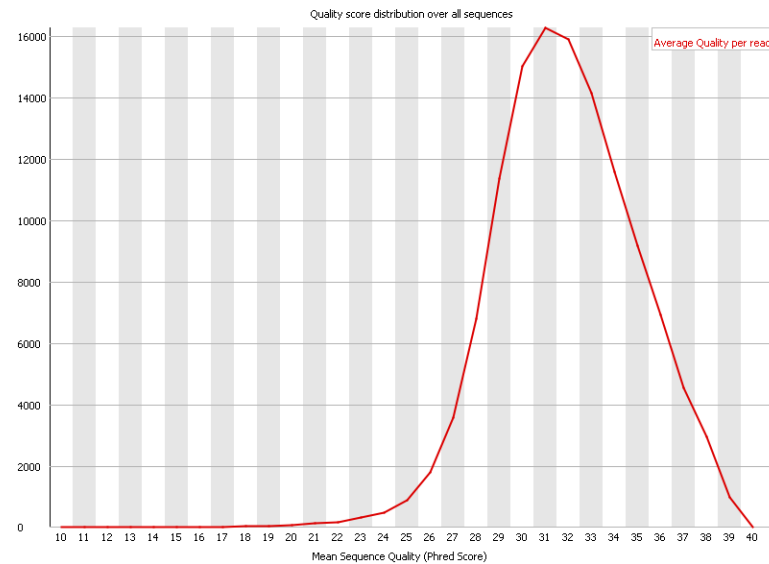
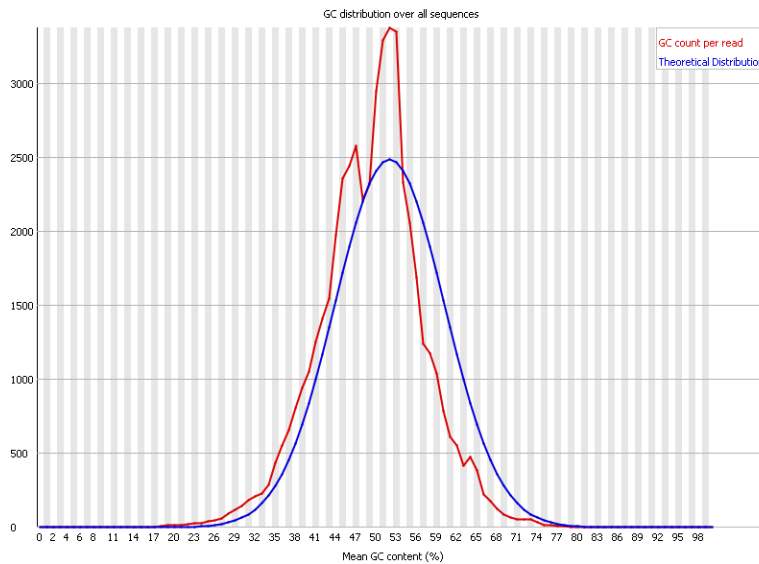
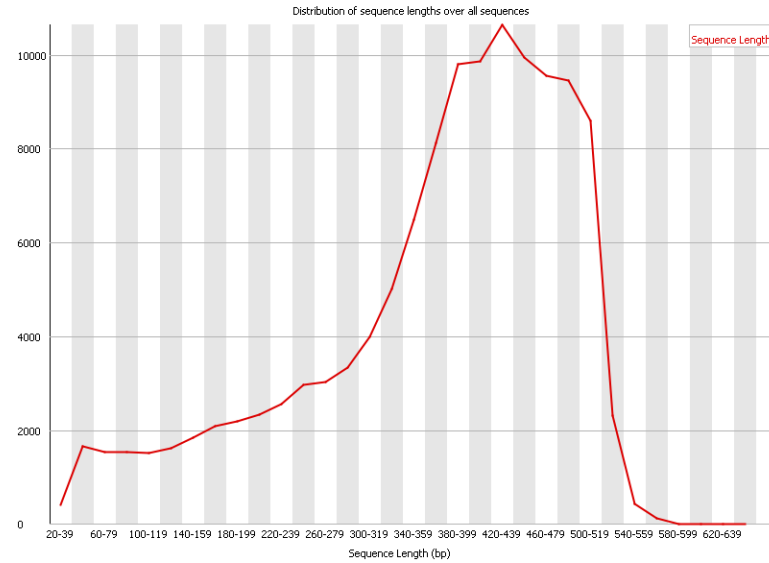
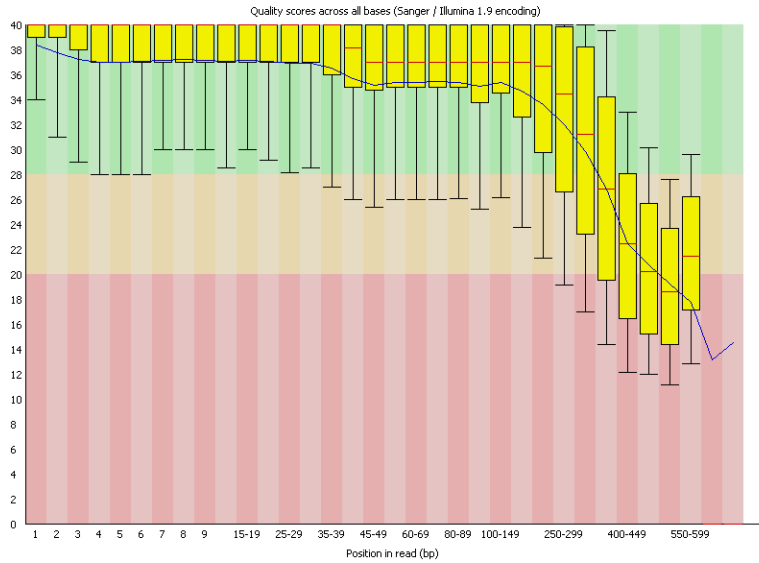
RNA-seq data quality assessment

1208 Resistant



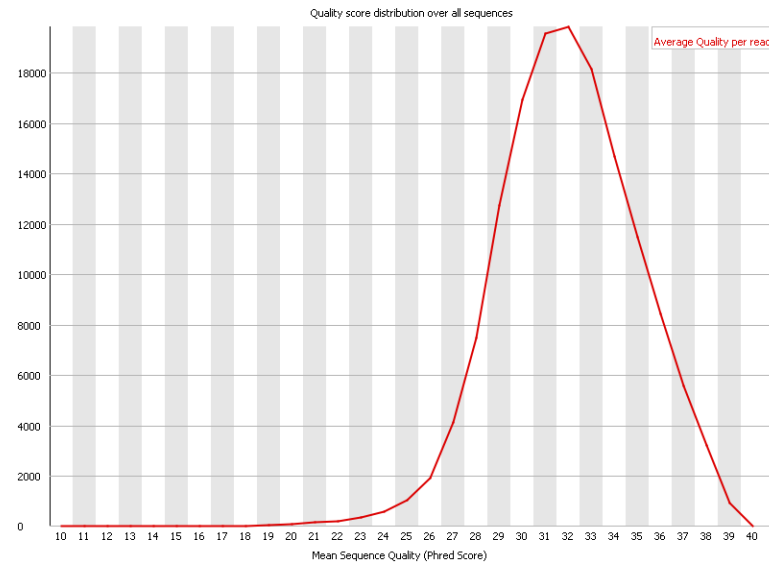
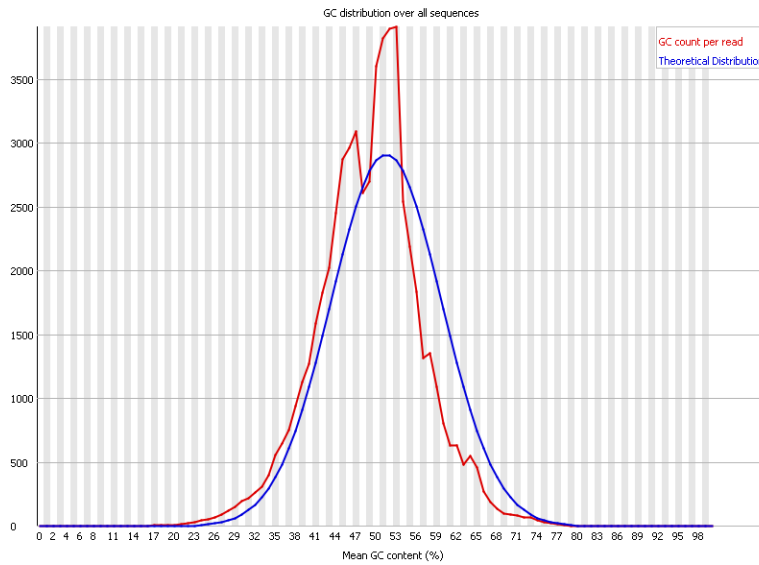
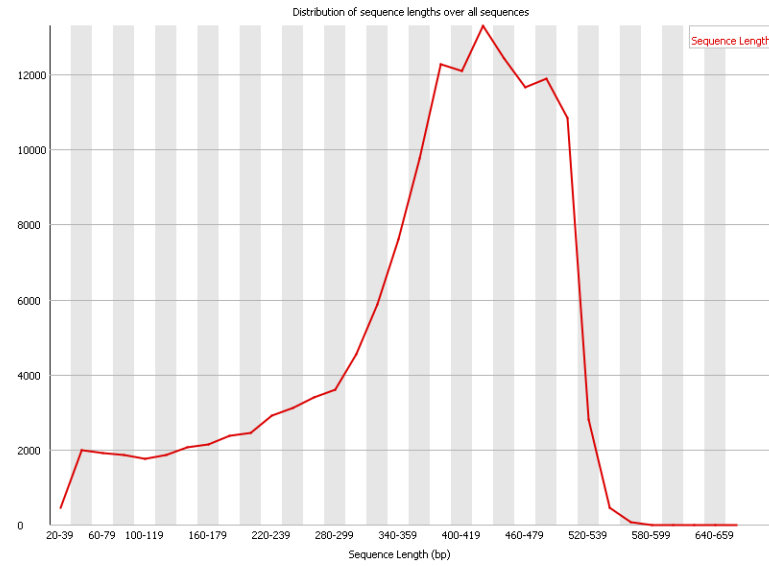
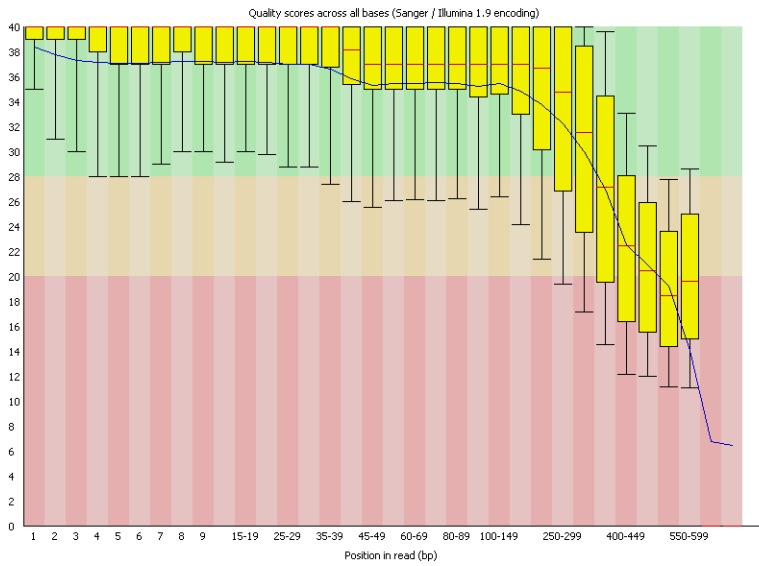
RNA-seq data quality assessment

1504 Resistant



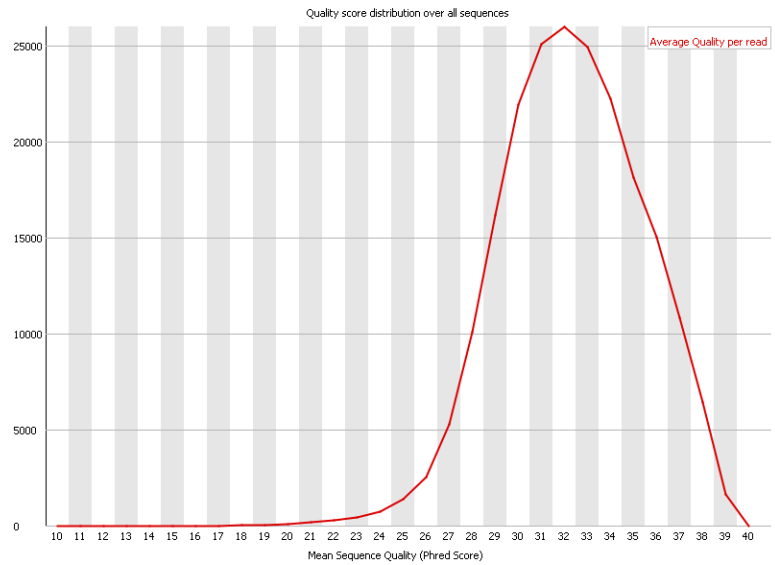
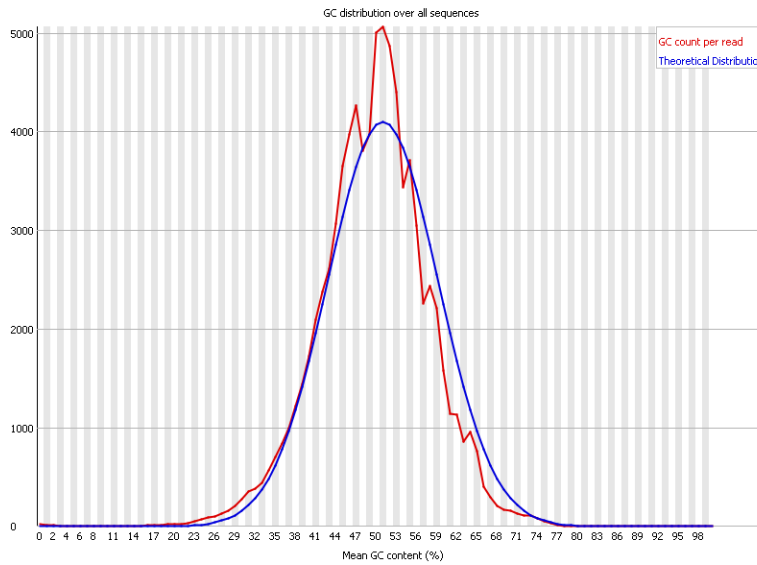
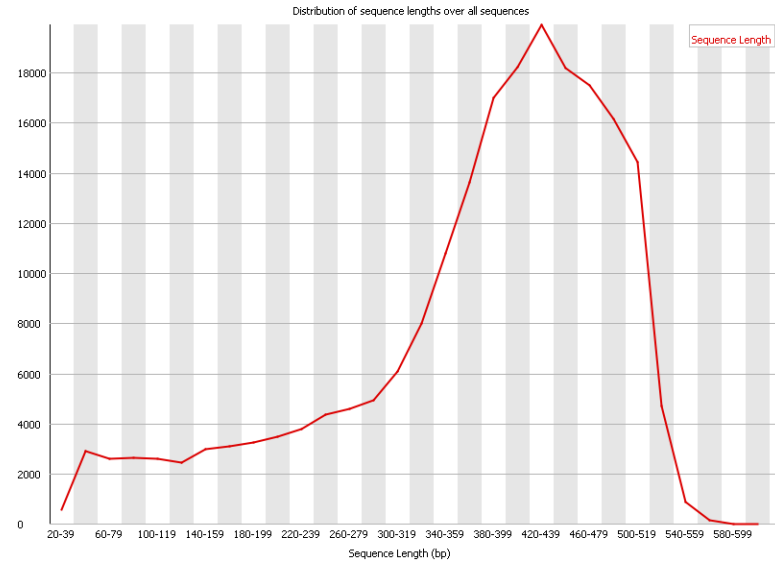
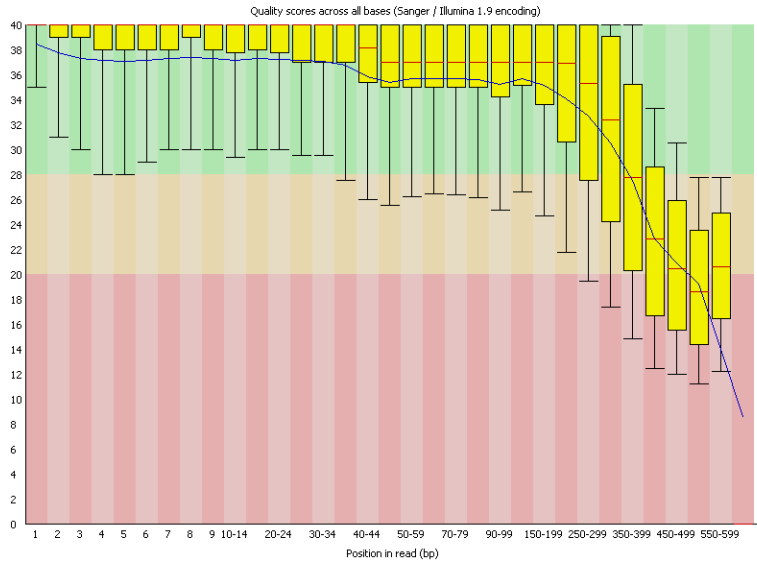
RNA-seq data quality assessment

2276 Resistant



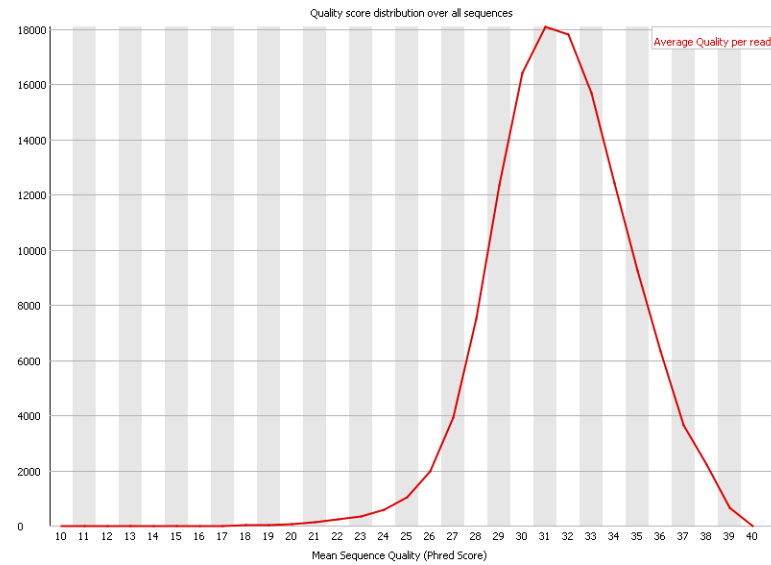
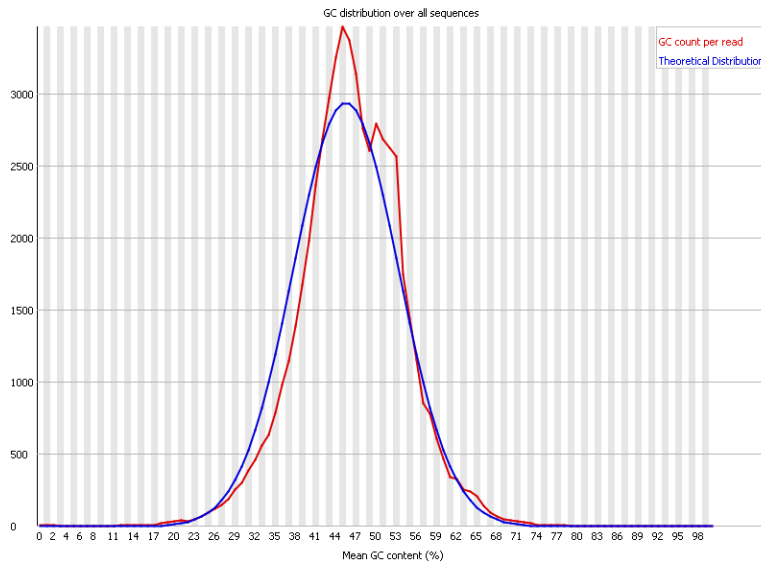
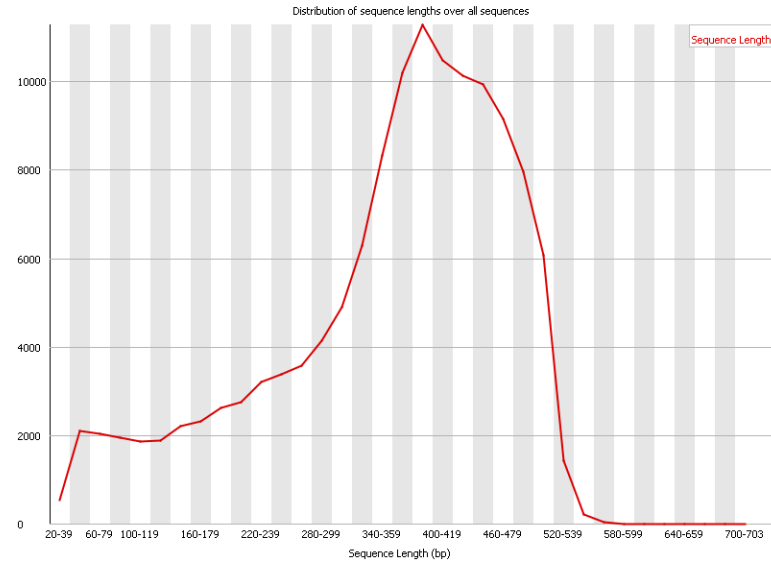
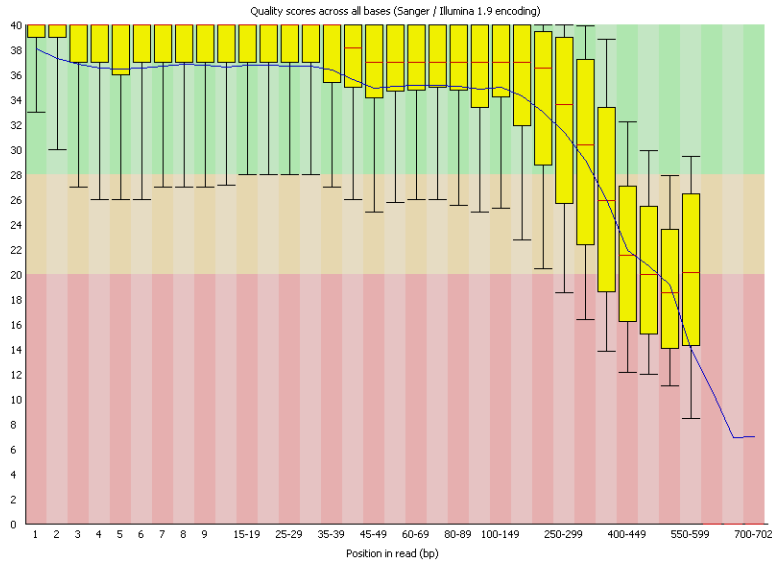
RNA-seq data quality assessment

1228 Resistant



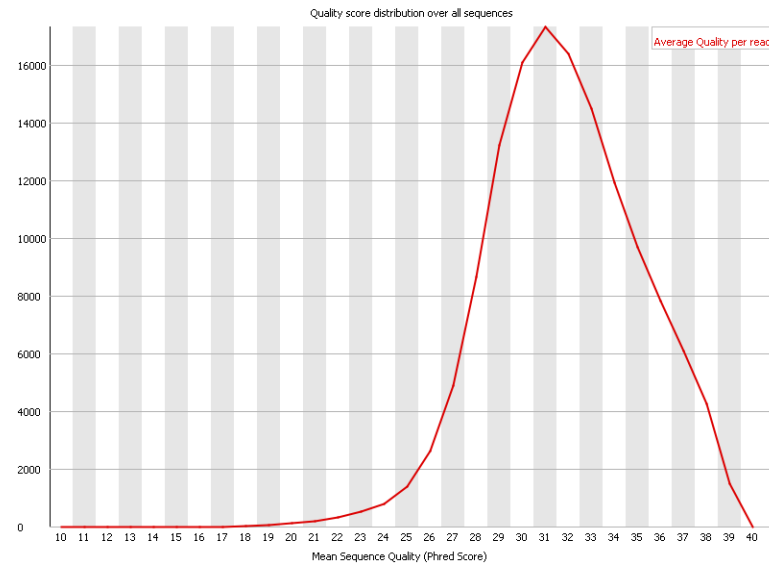
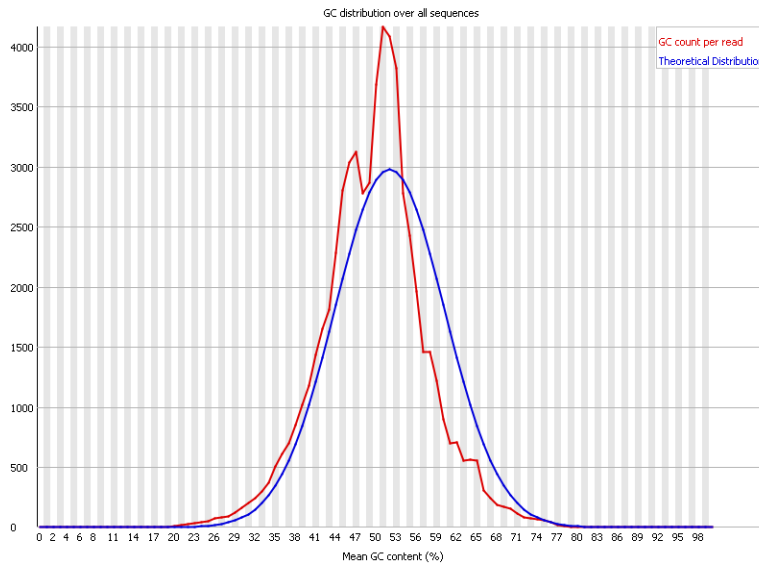
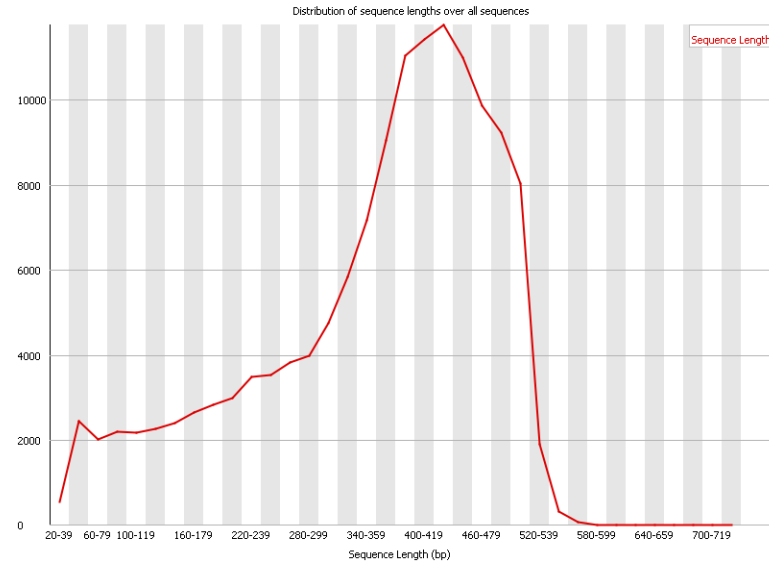
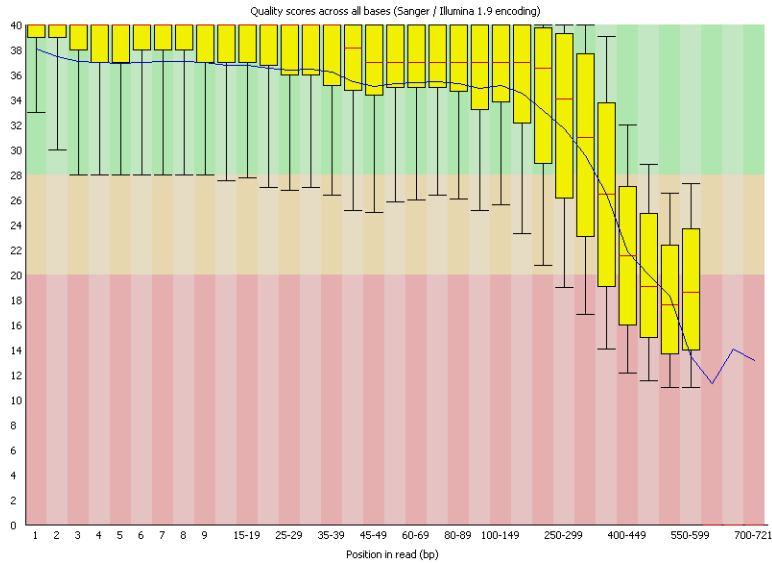
RNA-seq data quality assessment

2692 Resistant



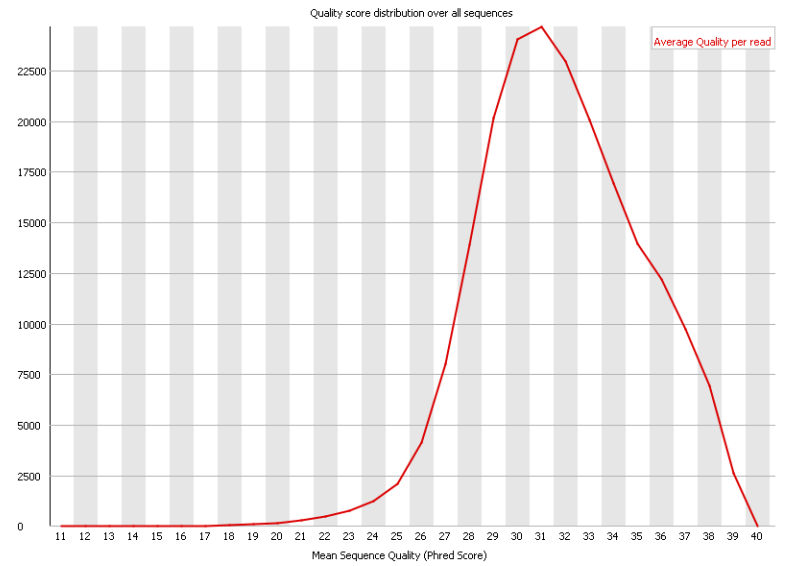
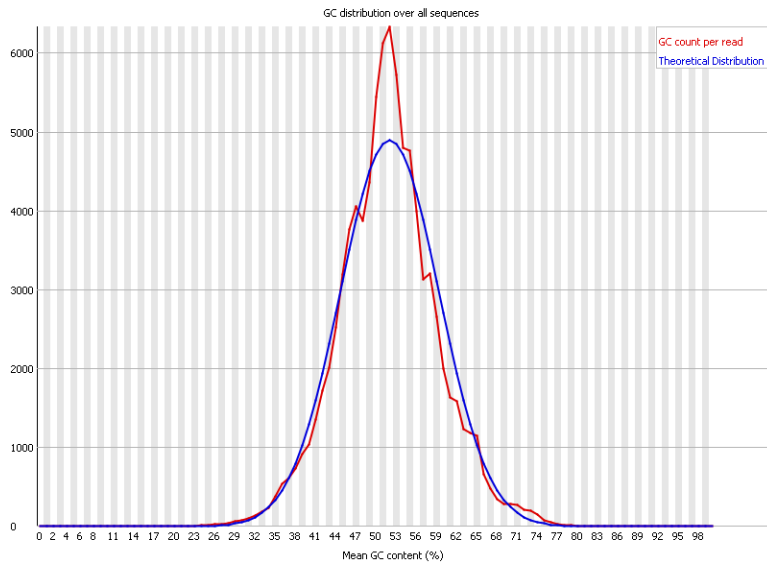
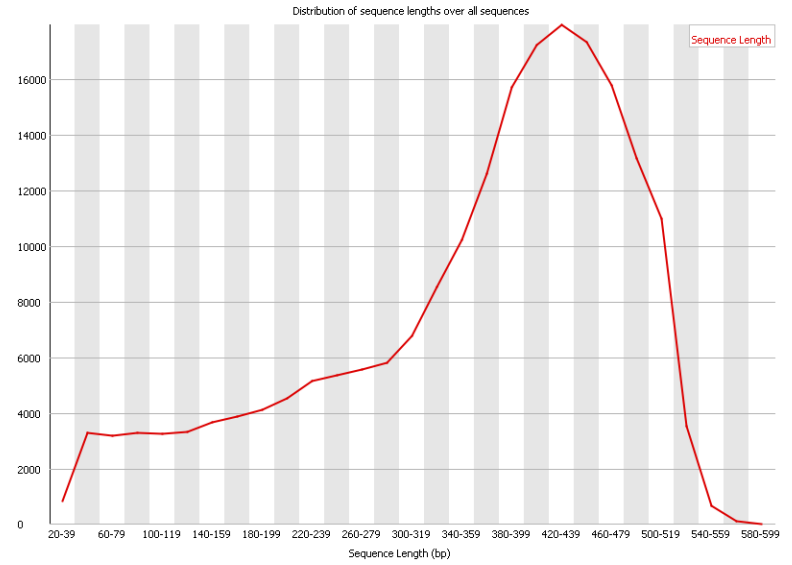
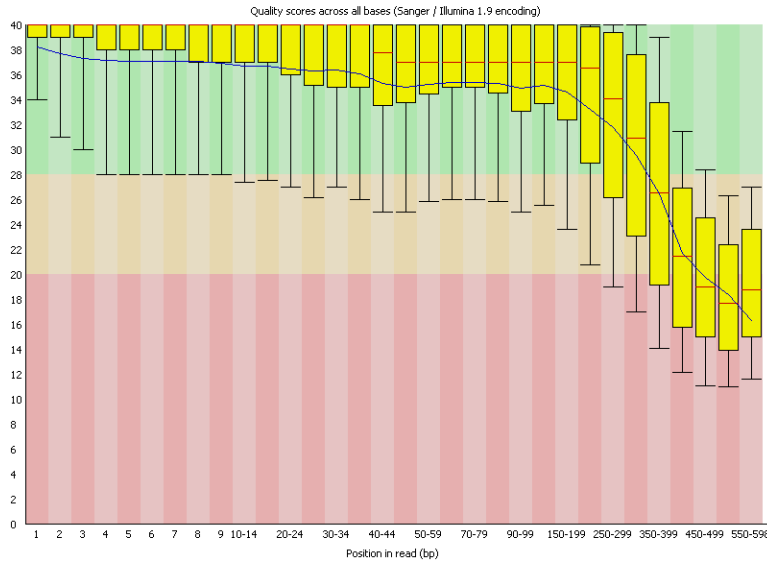
RNA-seq data quality assessment

2143 Susceptible



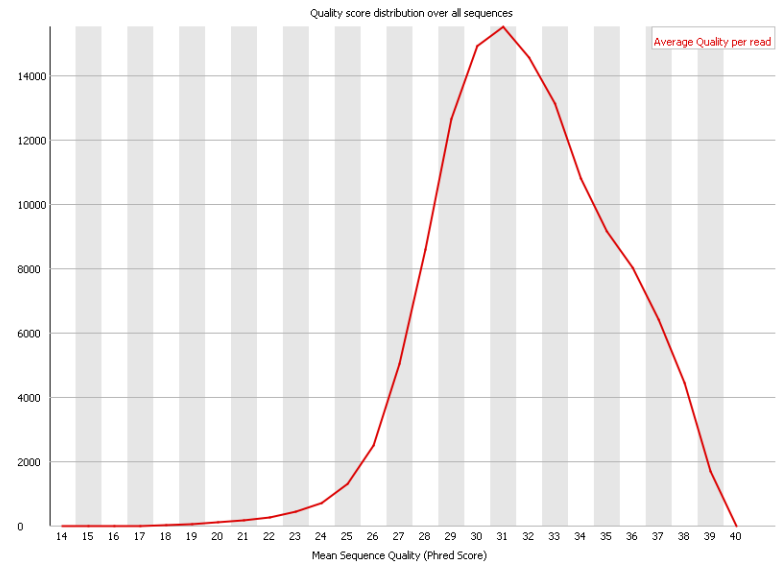
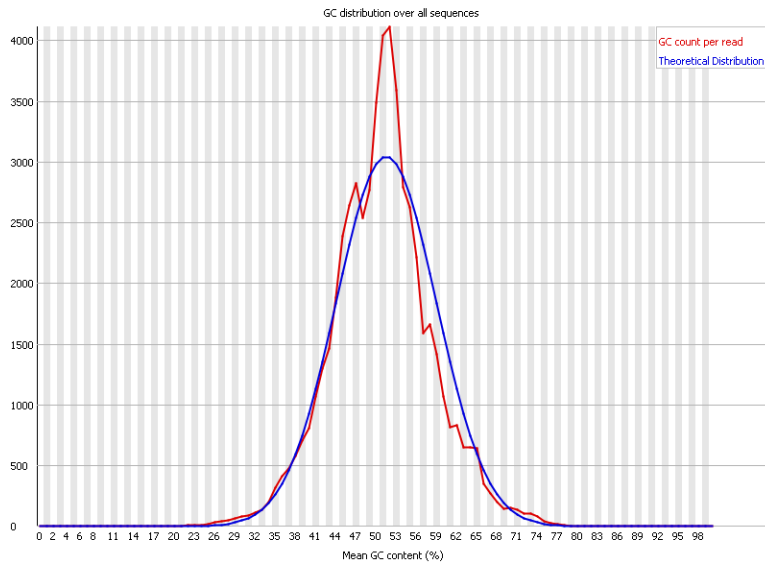
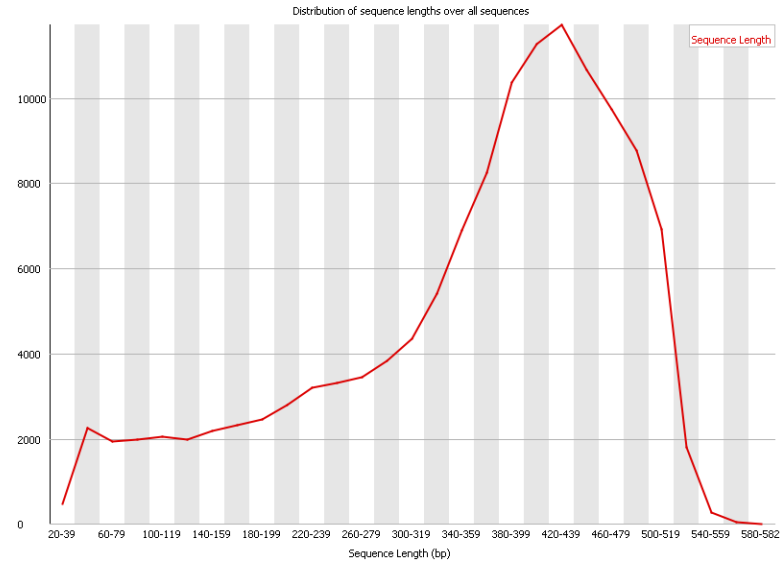
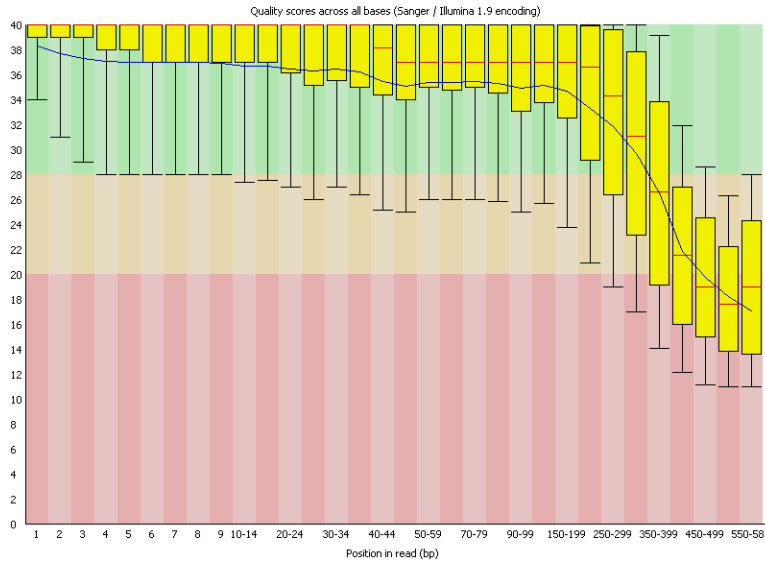
RNA-seq data quality assessment

1973 Susceptible



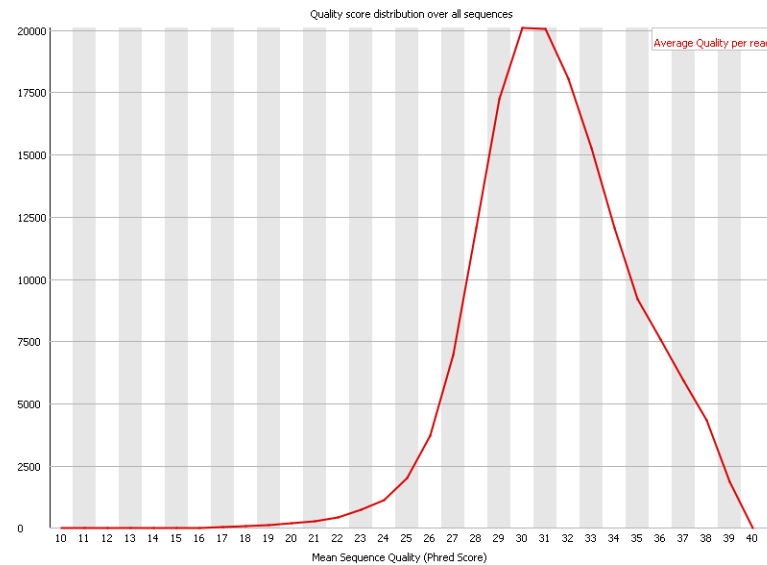
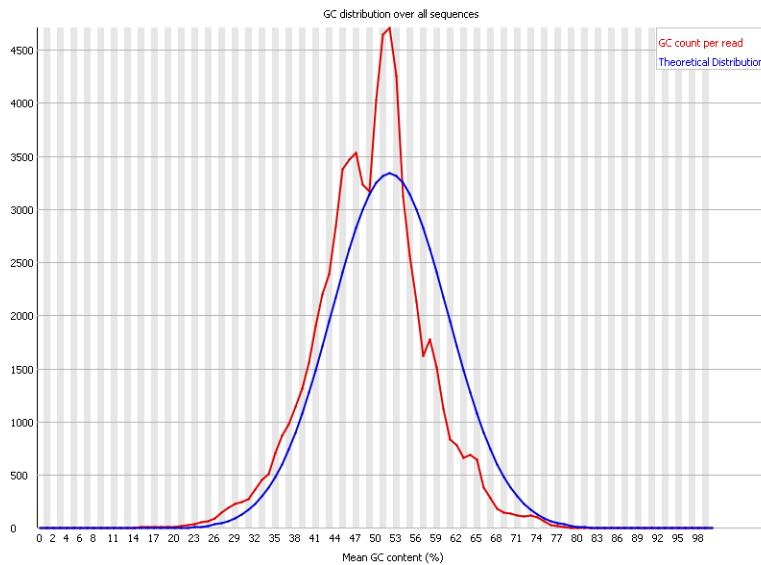
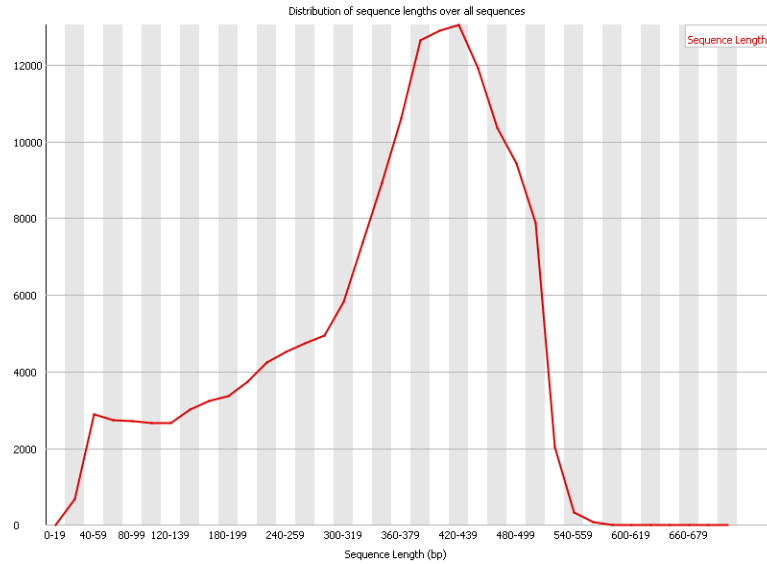
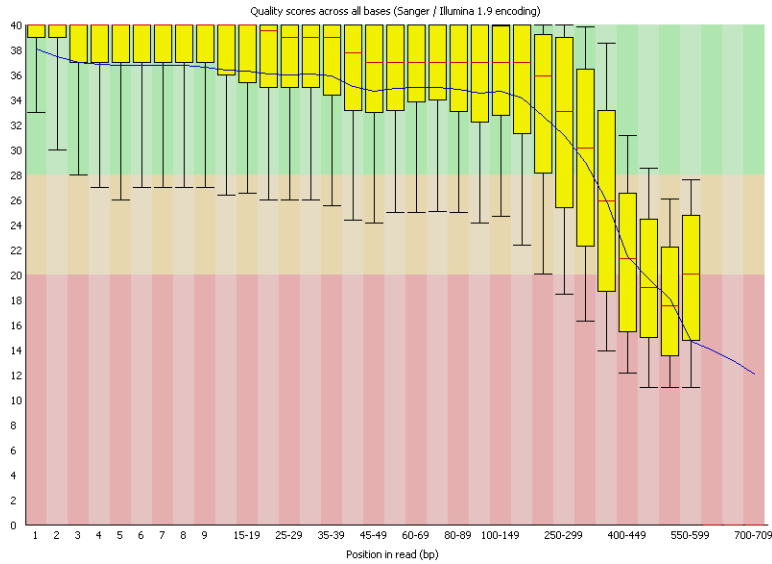
RNA-seq data quality assessment

3128 Susceptible



RNA-seq data quality assessment

DN00726 Susceptible



RNA-seq data quality assessment

Holden Susceptible

