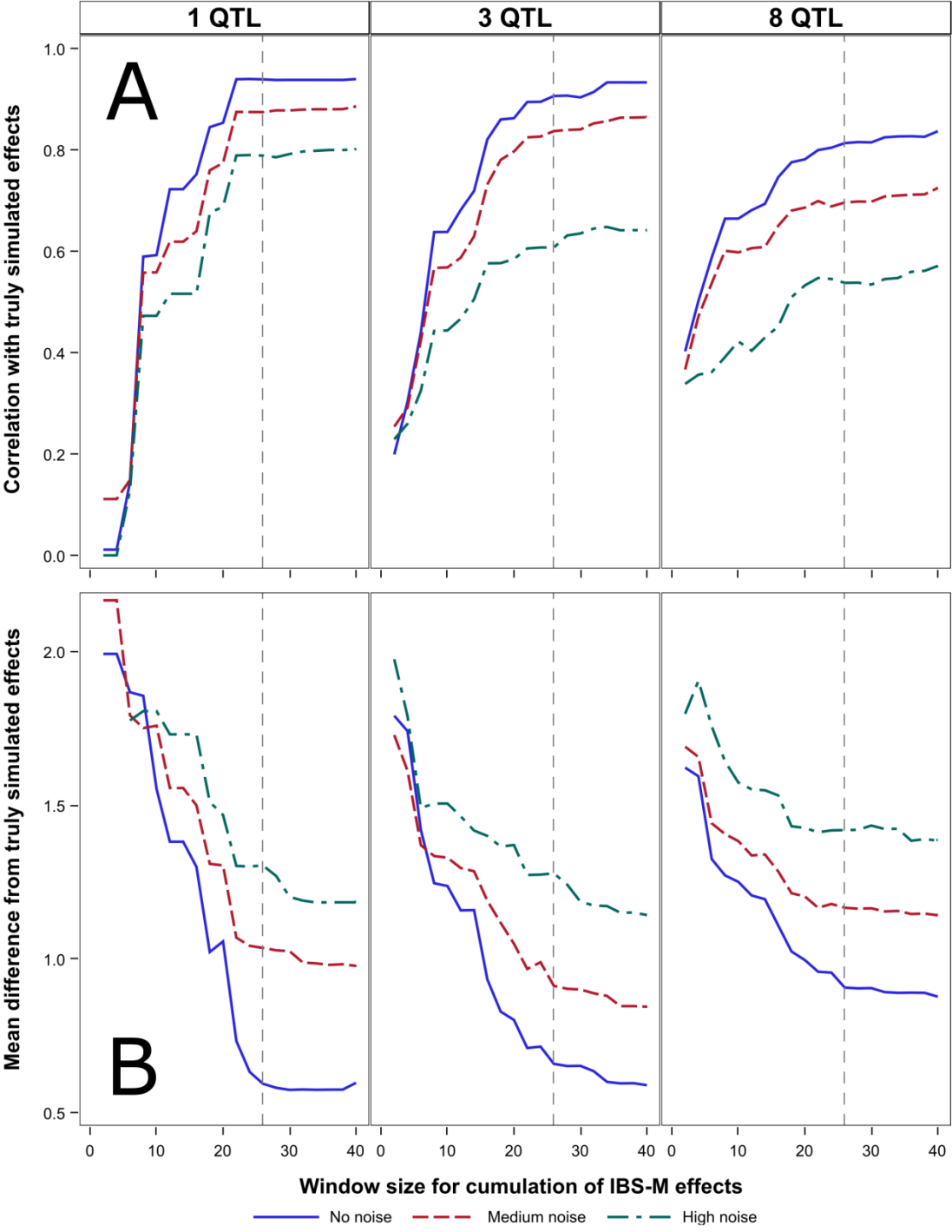


Figure S5. Comparisons of true and cumulated parent-specific QTL effects from simulation studies with different window sizes.



Shown is the correlation (A) of the cumulated parent-specific effect with the truly simulated parent-specific effect (see Table S2) and the mean absolute effect difference (B) from the truly simulated parent-specific effect after cumulating SNP effects using windows of 2-40 cM for three different scenarios (1-8 QTL). Values were averaged across QTL. Different coloured and shaped lines represent scenarios with no noise added, moderate noise added and high noise added to the simulated phenotype value, respectively. The vertical dashed line reflects the mean introgression size of 26 cM in the HEB-25 population.