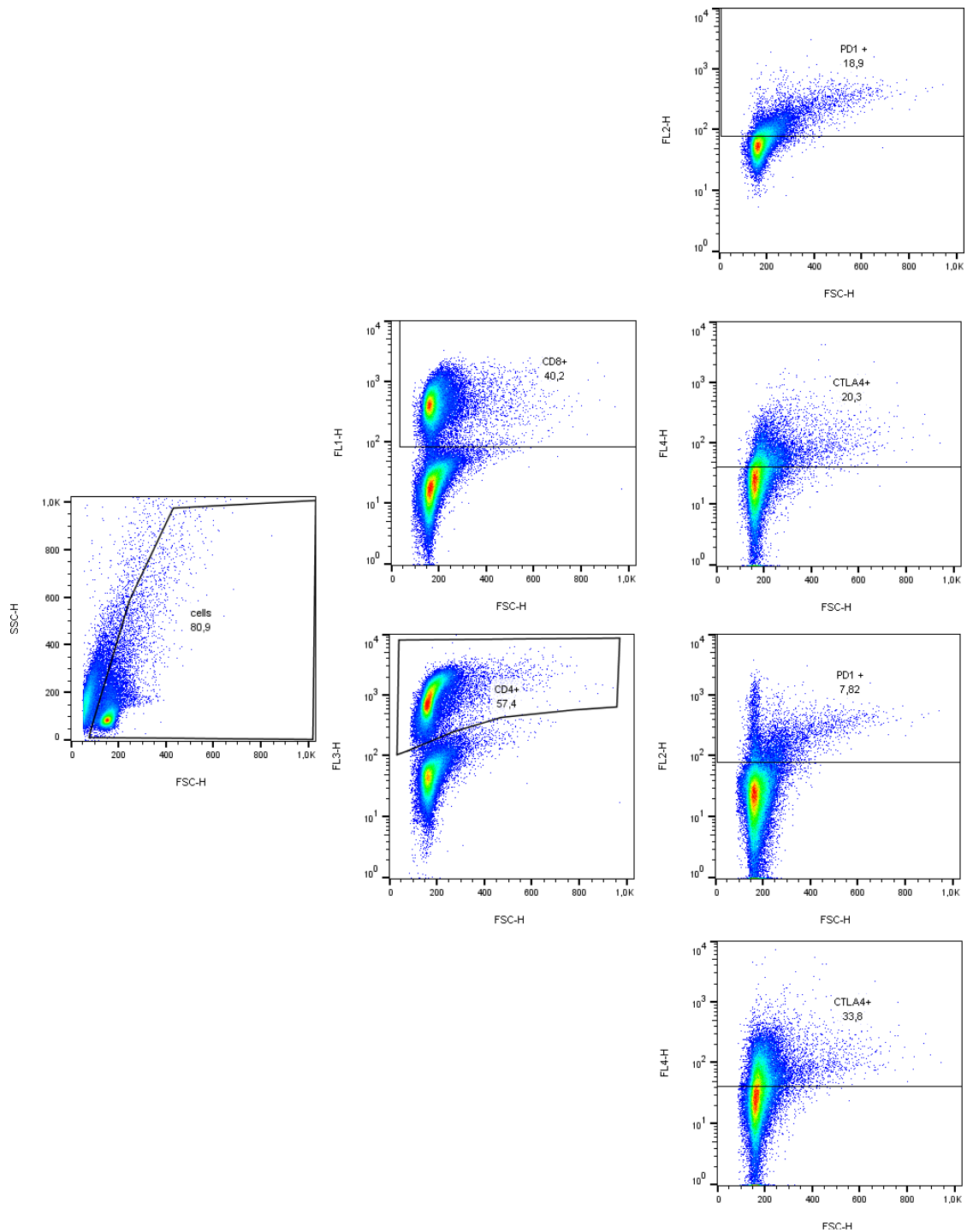
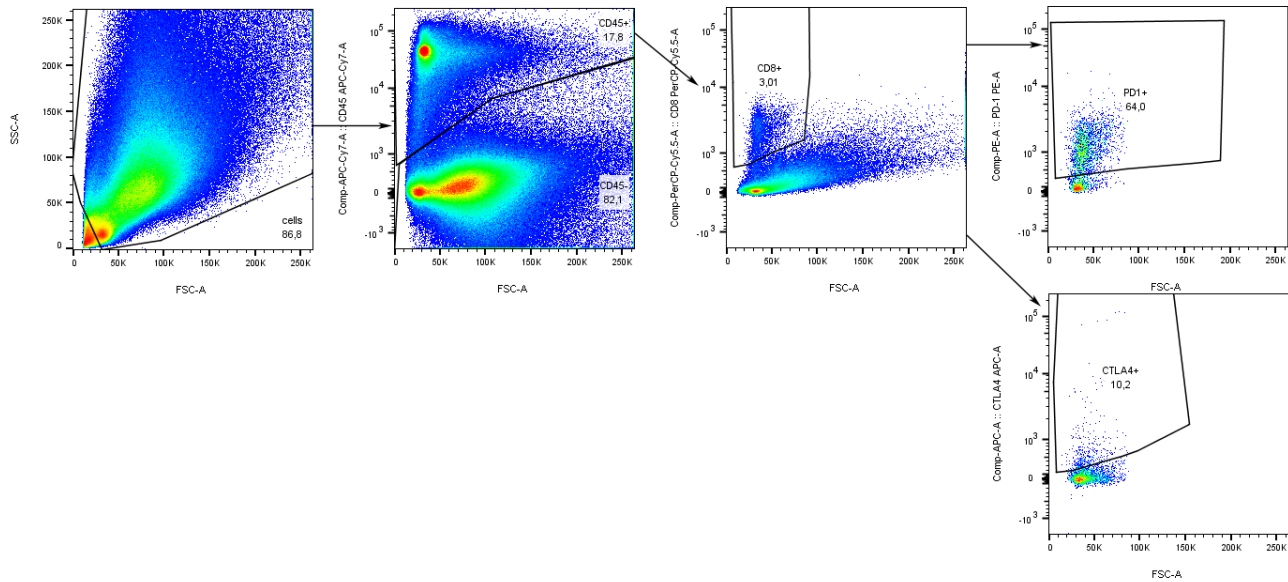


***Cblb*-deficient T cells are less susceptible to PD-L1-mediated inhibition**

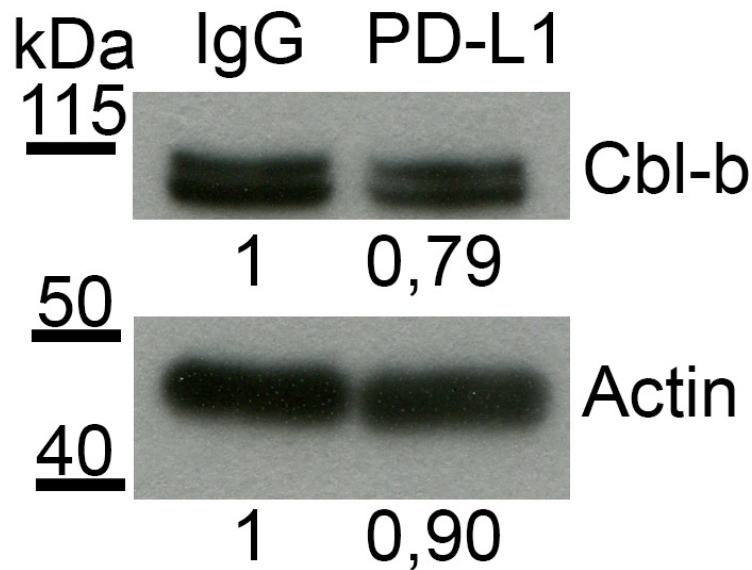
Supplementary Material



Supplementary Figure 1: Gating strategy of the results presented in figures 5A-D. FL1: CD8 FITC; FL2: PD-1 PE; FL3: CD4 PeCy7; FL4: CTLA-4 APC



Supplementary Figure 2: Gating strategy of the results presented in figures 5E, F.



Supplementary Figure 3: Western blot analysis of Cbl-b in T cells treated with or without PD-L1. CD3⁺ cells were stimulated overnight with 1 μ g/ml plate-bound anti-CD3 and 1 μ g/ml soluble anti-CD28. 10 μ g/ml recombinant PD-L1 or control IgG was added as indicated. One of two experiments with similar results is shown. Actin served as a loading control. Numbers indicate relative expression levels.