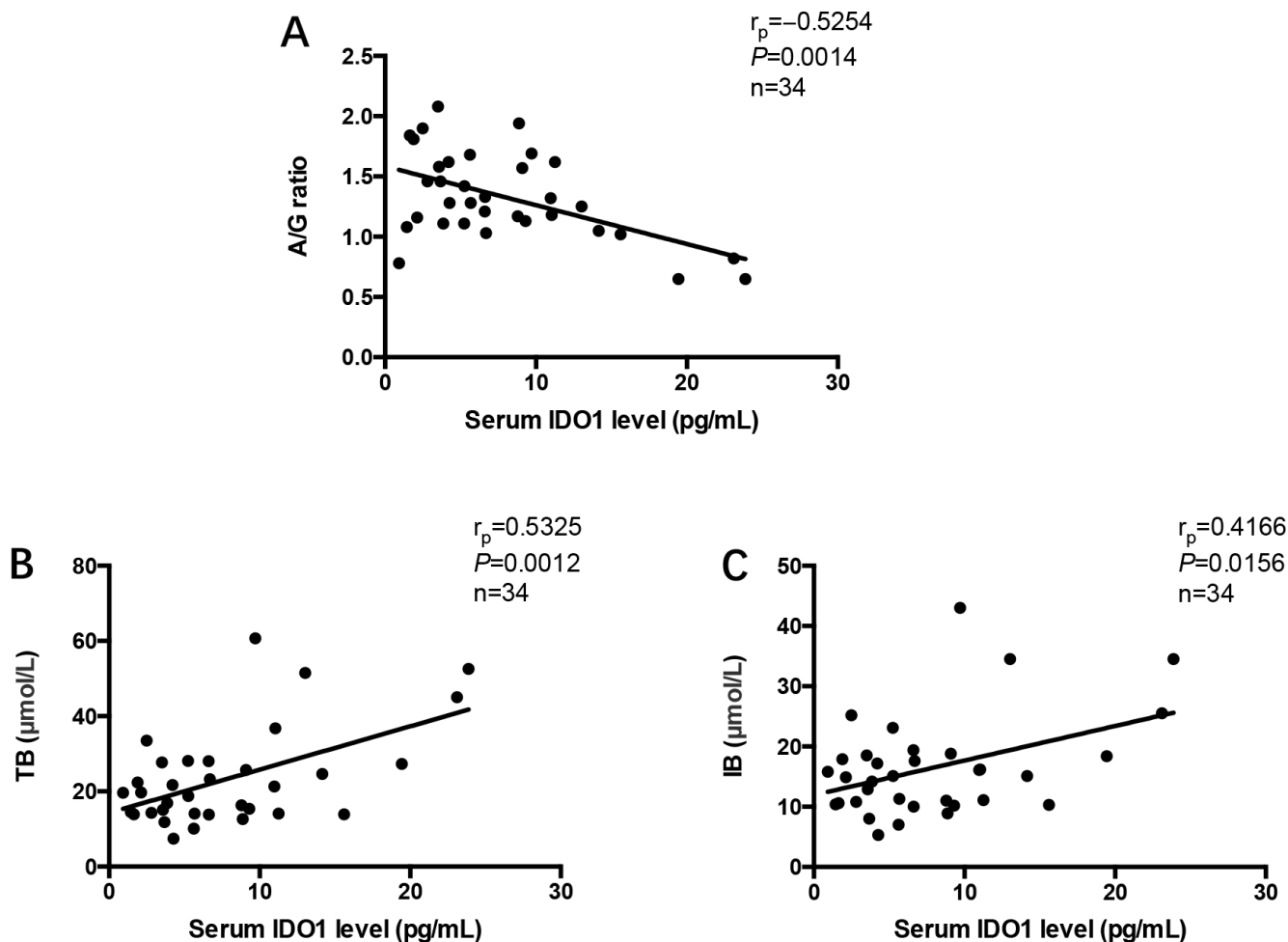
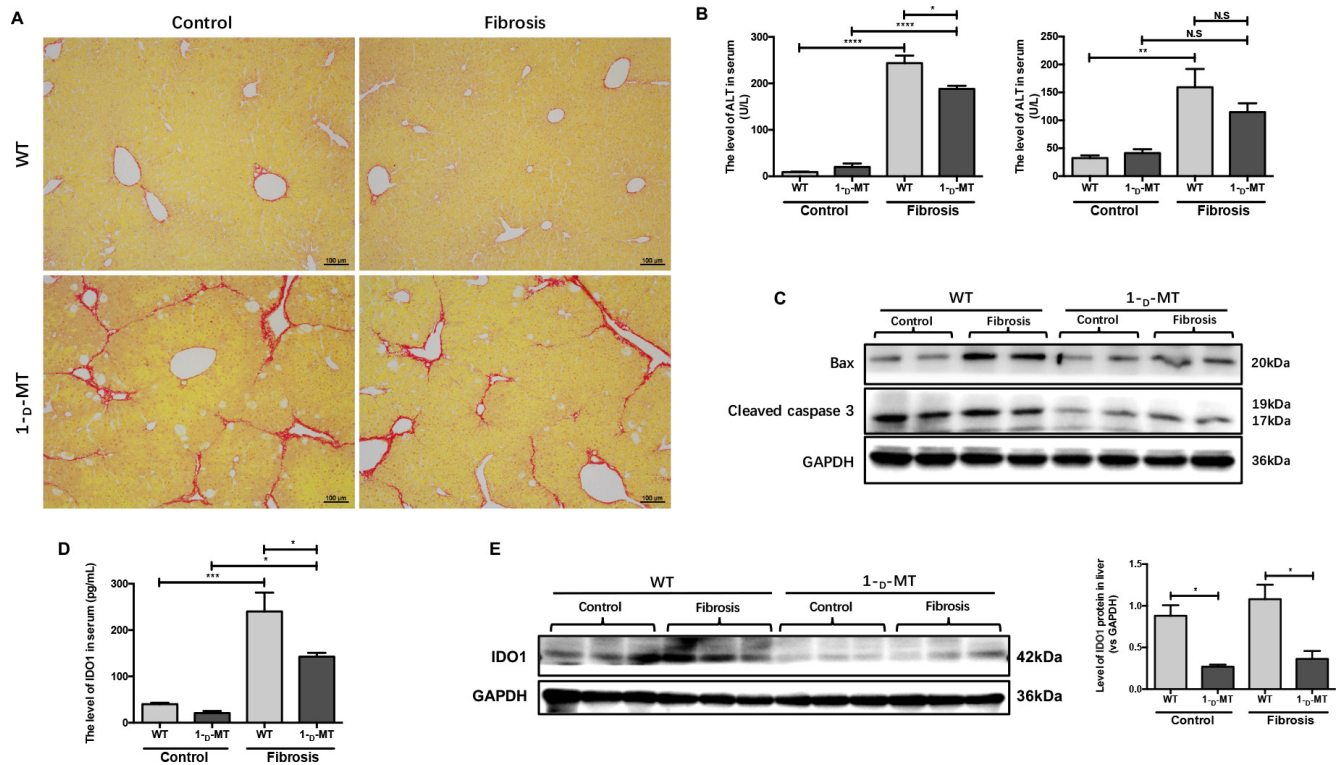


Indoleamine 2,3-dioxygenase 1 deficiency attenuates CCl₄-induced fibrosis through Th17 cells down-regulation and tryptophan 2,3-dioxygenase compensation

Supplementary Materials



Supplementary Figure 1: (A), (B) and (C) Pearson linear correlation tests for IDO1 and A/G ratio, TB and IB levels in the serum of patients. r_p : Pearson's correlation coefficient. Data are presented as the mean \pm SEM (* $P < 0.05$, ** $P < 0.01$, *** $P < 0.001$, **** $P < 0.0001$).



Supplementary Figure 2: (A) Sirius red staining of liver sections. (B) Liver lesions were assessed by measuring serum ALT and AST levels in WT and 1-D-MT mice. (C) Western blot analysis of the expression of α -SMA, Bax and cleaved caspase 3 in WT and 1-D-MT mice. (D) ELISA evaluating the serum IDO1 level in WT and 1-D-MT mice. (E) Western blot analysis of the expression of IDO1 in WT and 1-D-MT mice. The data are presented as the means \pm SEM (* P < 0.05, ** P < 0.01, *** P < 0.001, **** P < 0.0001).

Supplementary Table 1A: Primer sequences for quantitative real-time PCR

Target gene	Forward primer (5'→3')	Reverse primer (5'→3')
IL-17a	GCTGACCCCTAAGAAACCCC	GAAGCAGTTTGGGACCCCTT
IL-6	CCCCAATTTCCAATGCTCTCC	CGCACTAGGTTTGCCGAGTA
TGF- β 1	CAACCCAGGTCCTTCCTAAA	GGAGAGCCCTGGATACCAAC
TNF- α	AGGGTCTGGGCCATAGAACT	CCACCACGCTCTTCTGTCTAC
IL-1 β	GGTCAAAGGTTTGGAAGCAG	TGTGAAATGCCACCTTTTGA

Supplementary Table 1B: Primer sequences for mice genotyping

Primer	5' Label	Sequence 5'→3'	3' Label	Label Primer Type
oIMR4164		TGG AGC TGC CCG ACG C		Wild type Forward
oIMR6916		CTT GGG TGG AGA GGC TAT TC		Mutant Forward