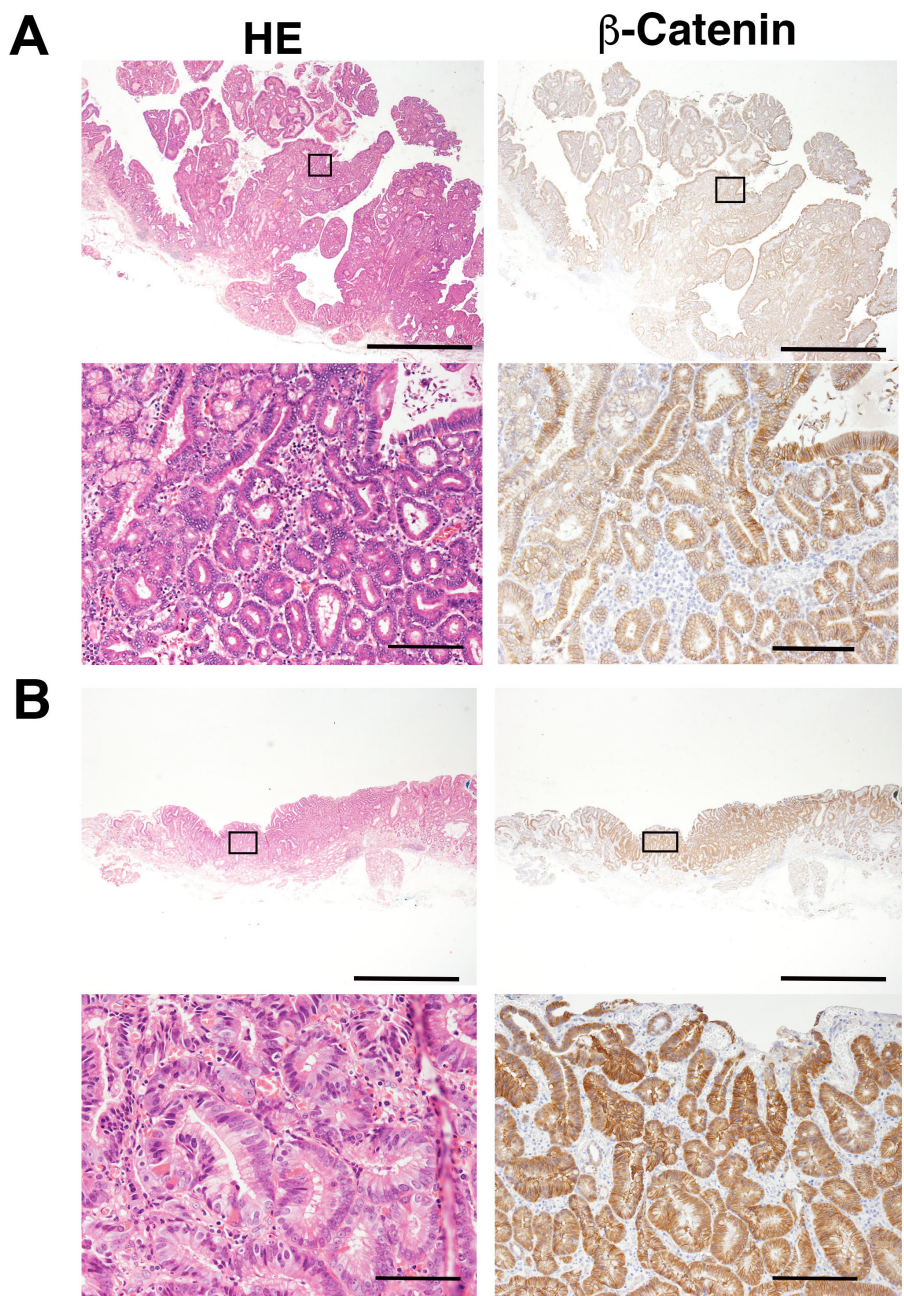


The different pathogeneses of sporadic adenoma and adenocarcinoma in non-ampullary lesions of the proximal and distal duodenum

SUPPLEMENTARY MATERIALS

SUPPLEMENTARY FIGURE



Supplementary Figure 1: β -Catenin expression in representative duodenal adenocarcinomas. (A) membranous β -catenin (B) Nuclear and cytoplasmic β -catenin each in box indicate lower photo. Bars, upper panels; 500 μ m, lower panels, 20 μ m.