

Supplemental Information

Integrin $\alpha 6\beta 4$ Upregulates Amphiregulin and Epiregulin through Base Excision Repair-Mediated DNA Demethylation and Promotes Genome-wide DNA Hypomethylation

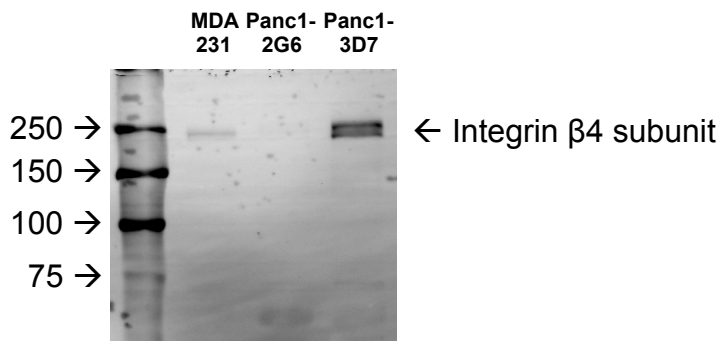
Brittany L. Carpenter^{1,2}, Jinpeng Liu¹, Lei Qi^{1,2}, Chi Wang^{1,3}, and Kathleen L. O'Connor^{1,2,*}

¹Markey Cancer Center, ²Department of Molecular and Cellular Biochemistry, ³Division of Cancer Biostatistics, Department of Biostatistics, University of Kentucky, Lexington, USA 40506-0509

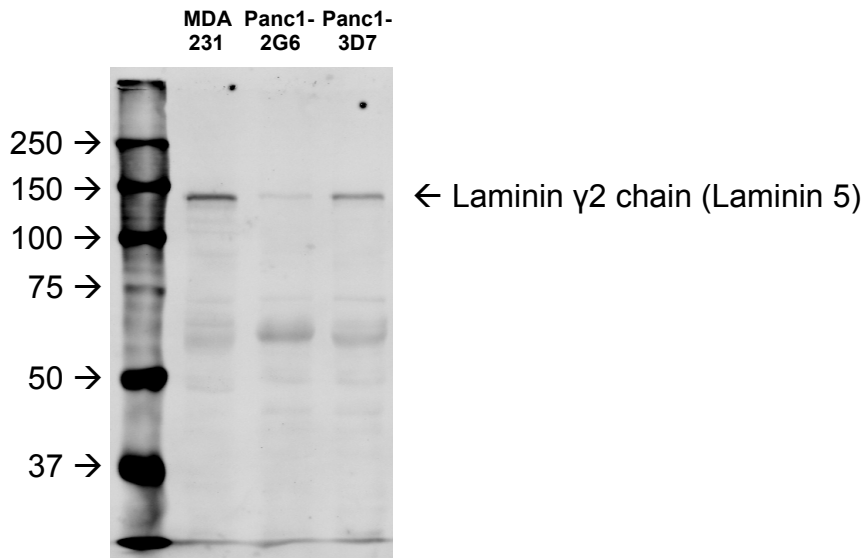
*To whom correspondence should be addressed:

Kathleen L. O'Connor, Ph.D.
Markey Cancer Center
University of Kentucky
741 S. Limestone Street
Lexington, KY 40506-0509 USA
Phone: 859-323-7534 (office)
Fax: 859-323-6030
E-mail: kloconnor@uky.edu

A. Figure 1D. Integrin β 4 immunoblot



B. Figure 1D. Laminin-5 immunoblot



C. Figure 1D. Actin immunoblot

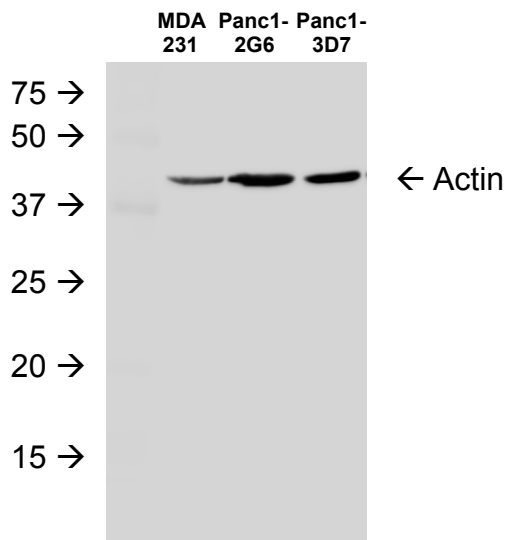
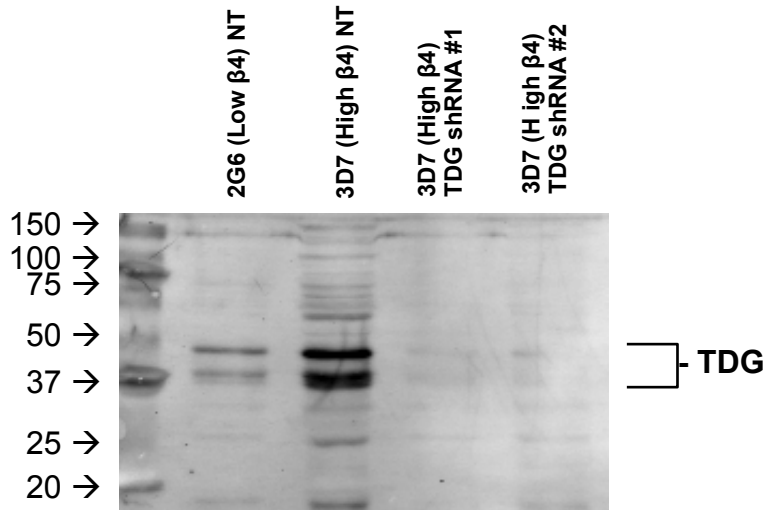


Figure S1. Full length original images for immunoblots in Figure 1D.

A. Figure 6C. TDG immunoblot



B. Figure 6C. Lamin A/C immunoblot

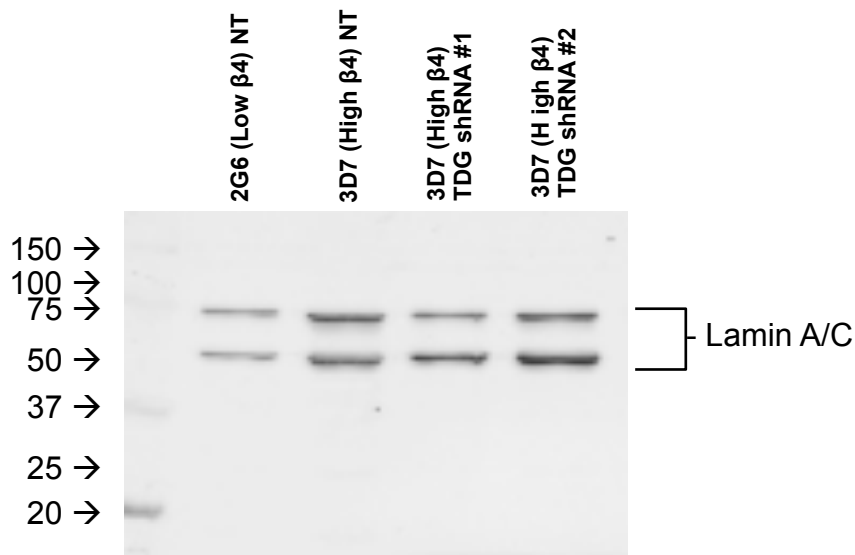


Figure S2. Full length original images for immunoblots in Figure 6C.