

SUPPLEMENTAL MATERIAL

Figure Legend:

Figure 1: Sex-Differences in Heart Transplantation Over Time

Sex-specific cumulative incidence curves were generated for patients initially listed as (A) UNOS Status 1A, (B) UNOS Status 1B, and (C) UNOS Status 2 during three time periods: 2004-2008, 2009-2011, and 2012-2015. Figures show uncertainty in estimators of plus or minus two standard errors, where standard errors were estimated using subsampling.

Figure 1A

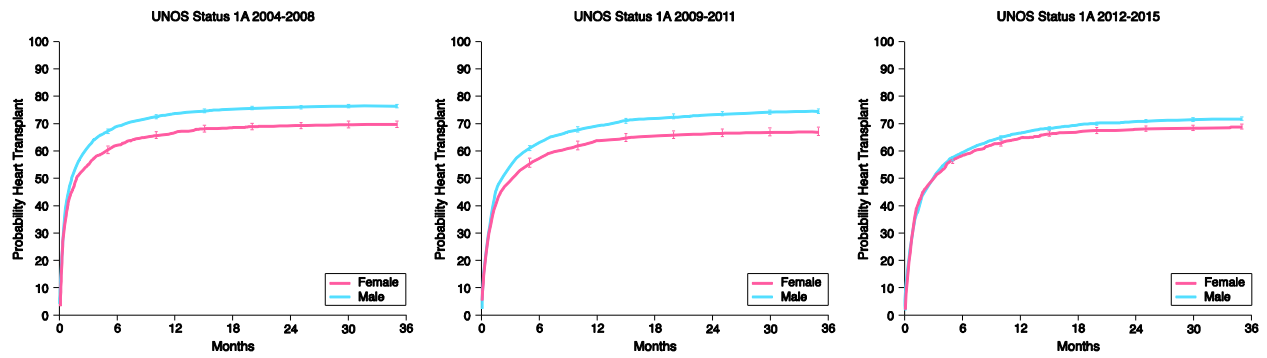


Figure 1B

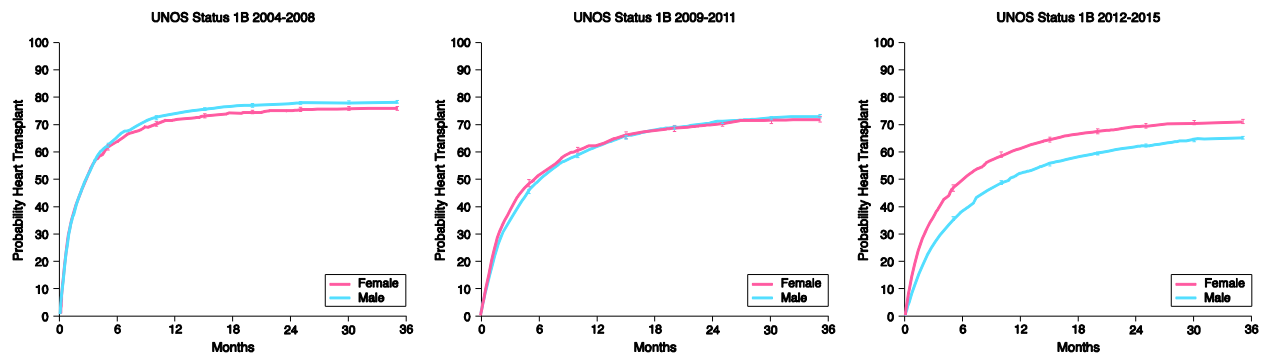


Figure 1C

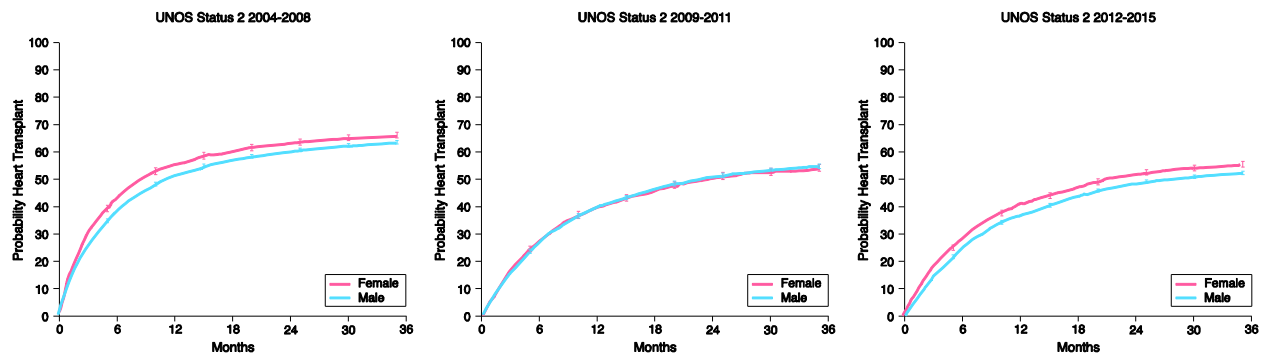


Table 1. Sex-Differences in Baseline Characteristics While Awaiting Heart

Transplantation

Variable	UNOS Status 1A		UNOS Status 1B		UNOS Status 2	
	Female	Male	Female	Male	Female	Male
	N= 1965	N=5716	N=3226	N=9801	N=3197	N=9164
Age(y), median (Q1, Q3)	51 (37,59)	55 (45,62)	53 (40,60)	56 (46,62)	51 (39,59)	57 (48,62)
Race, n (%)						
White	1150 (59)	3802 (67)	1802 (56)	6433 (66)	2156 (67)	6999 (76)
Black	558 (28)	1157 (20)	1069 (33)	2252 (23)	674 (21)	1246 (14)
Hispanic	176 (9)	467 (8)	243 (8)	781 (8)	253 (8)	594 (6)
Asian	58 (3)	234 (4)	73 (2)	256 (3)	71 (2)	213 (2)
Other	23 (1)	56 (1)	39 (1)	79 (1)	43 (1)	112 (1)
BMI, median (Q1, Q3)	25 (22, 29)	27 (24,30)	26 (23,31)	27 (24,31)	27(23, 31)	28 (25,31)
Insurance, n (%)						
Private	1084 (55)	3138 (55)	1609 (50)	5107 (52)	1857 (58)	4984 (54)
Medicare	451 (23)	1567 (27)	966 (30)	3067 (31)	830 (26)	2950 (32)
Medicaid	347 (18)	719 (13)	543 (17)	1142 (12)	414 (13)	767 (8)
Other	83 (4)	292 (5)	108 (3)	485 (5)	96 (3)	463 (5)
Year, n (%)						

2004	127 (6)	346 (6)	187 (6)	508 (5)	258 (8)	904 (10)
2005	115 (6)	334 (6)	173 (5)	556 (6)	259 (8)	841 (9)
2006	109 (6)	343 (6)	192 (6)	653 (7)	270 (8)	869 (9)
2007	126 (6)	422 (7)	213 (7)	656 (7)	263 (8)	826 (9)
2008	144 (7)	454 (8)	279(9)	768 (8)	247 (8)	792 (9)
2009	159 (8)	436 (8)	262 (8)	851 (9)	283 (9)	827 (9)
2010	163 (8)	494 (9)	294 (9)	850 (9)	308 (10)	793 (9)
2011	177 (9)	501 (9)	312 (10)	857 (9)	253 (8)	694 (8)
2012	206 (10)	582 (10)	313 (10)	979 (10)	276 (9)	650 (7)
2013	235 (12)	619 (11)	351 (11)	1073 (11)	260(8)	694 (8)
2014	245 (12)	694 (12)	370 (11)	1195 (12)	304 (10)	791 (9)
2015 until 8/31/15	159 (8)	491 (9)	280 (9)	855 (9)	216 (7)	483 (5)
ABO blood type, n (%)						
A	731 (37)	2207 (39)	1162 (36)	3651 (37)	1172(37)	3685 (40)
B	321 (16)	840 (15)	441 (14)	1361 (14)	401 (13)	1090 (12)
O	826 (42)	2361 (41)	1464 (45)	4357 (44)	1498 (47)	3992 (44)
AB	87 (4)	308 (5)	159 (5)	432 (4)	126 (4)	397 (4)
Diagnosis, n (%)						
Dilated	1185 (60)	2634 (46)	2120 (66)	4877 (50)	1655 (52)	3245(35)

Ischemic	400 (20)	2459 (43)	631 (20)	4058 (41)	586 (18)	4325 (47)
Congenital	35 (2)	91 (2)	114 (4)	184 (2)	268 (8)	352 (4)
Hypertrophic	48 (2)	71 (1)	68 (2)	128 (1)	153 (5)	209 (2)
Restrictive	62 (3)	104 (2)	86 (3)	168 (2)	162 (5)	329 (4)
Valvular	50 (3)	79 (1)	82 (3)	132 (1)	96 (3)	173 (2)
Other	185 (9)	278 (5)	125 (4)	254 (3)	277 (9)	531 (6)
ICD , n (%)	1096 (56)	3815 (67)	2356 (73)	7729 (79)	2187 (68)	7028 (77)
Diabetes mellitus, n (%)	431 (22)	1633 (29)	804 (25)	3083 (31)	633 (20)	2653 (29)
Dialysis at listing, n (%)	94 (5)	235 (4)	52 (2)	211 (2)	83 (3)	261 (3)
Hypertension, n (%)	670 (34)	2314 (40)	1205 (37)	4287 (44)	1189 (37)	4233 (46)
Tobacco usage, n (%)	661 (34)	2792 (49)	1254 (39)	5056 (52)	1023 (32)	4685 (51)
Malignancy, n (%)	197 (10)	307 (5)	418 (13)	535 (5)	310 (10)	526 (6)
PVD, n (%)	35 (2)	144 (3)	77 (2)	269 (3)	66 (2)	302 (3)
Prior CVA, n (%)	86 (4)	316 (6)	178 (6)	537 (5)	138 (4)	421 (5)
Antiarrhythmic, n (%)	509 (26)	1829 (32)	839 (26)	2935 (30)	763 (24)	2630 (29)
eGFR mls/min/1.73m ² , median (Q1, Q3)	65 (47,89)	67 (49,89)	66 (48,85)	67 (51,86)	63 (48,82)	65 (51,81)
Serum Albumin g/dl, median (Q1, Q3)	3.3 (2.9,3.8)	3.4 (3.0,3.9)	3.7 (3.3,4.1)	3.7 (3.2,4.1)	4.0 (3.6,4.4)	4.0 (3.6,4.3)
Mean PAP mmHg, median (Q1, Q3)	30 (23,37)	32 (24,39)	29 (23,36)	31 (24,38)	26 (20,33)	28 (21,35)
PCWP mmHg, median (Q1, Q3)	20 (14,26)	22 (15, 28)	20 (14,25)	21 (15,27)	17 (12,23)	19 (13,25)
CI l/min, median (Q1, Q3)	2.1 (1.6,2.5)	2.1 (1.7,2.6)	2.0(1.7,2.5)	2.1(1.7,2.5)	2.2 (1.8,2.6)	2.1 (1.8,2.5)

PVO ₂ ml/kg/min, median (Q1, Q3)	10 (8,13)	11 (9,14)	11 (9,13)	12 (9,14)	11 (9,14)	12 (10,14)
Ventilator, n (%)	219 (11)	439 (8)	41 (1)	101 (1)	12 (0)	59 (1)
Inotrope, n (%)	906 (46)	2403 (42)	1691 (52)	4880 (50)	157 (5)	531 (6)
LVAD, n (%)	447 (23)	1675 (29)	655 (20)	2660 (27)	72 (2)	241 (3)
RVAD +/- LVAD, MCS unspecified, n (%)	229 (12)	579 (10)	114 (4)	321 (3)	16 (1)	79 (1)
TAH, n (%)	18 (1)	86 (2)	*	32 (0)	*	13 (0)
ECMO, n (%)	121 (6)	200 (4)	*	*	*	*
IABP, n (%)	300 (15)	966 (17)	57 (2)	167 (2)	33 (1)	97 (1)

* = Frequency \leq 10 patients

y=years, Q1, Q3= 25-th and, 75-th percentiles., CMP=cardiomyopathy, CAD=coronary artery disease, ICD=implantable cardioverter-defibrillator, PVD=peripheral vascular disease, CVA=cerebral vascular accident, eGFR=estimated glomerular filtration rate, PAP=pulmonary arterial pressure, CI=cardiac index, PVO₂=peak oxygen consumption, LVAD=left ventricular assist device, RVAD=right ventricular assist device, TAH=total artificial heart, MCS=mechanical circulatory support, ECMO=extracorporeal membrane oxygenation, IABP=intra-aortic balloon pump