

## **S2 Fig. Phylogenetic analysis of *Rhizophagus irregularis* haplotypes.**

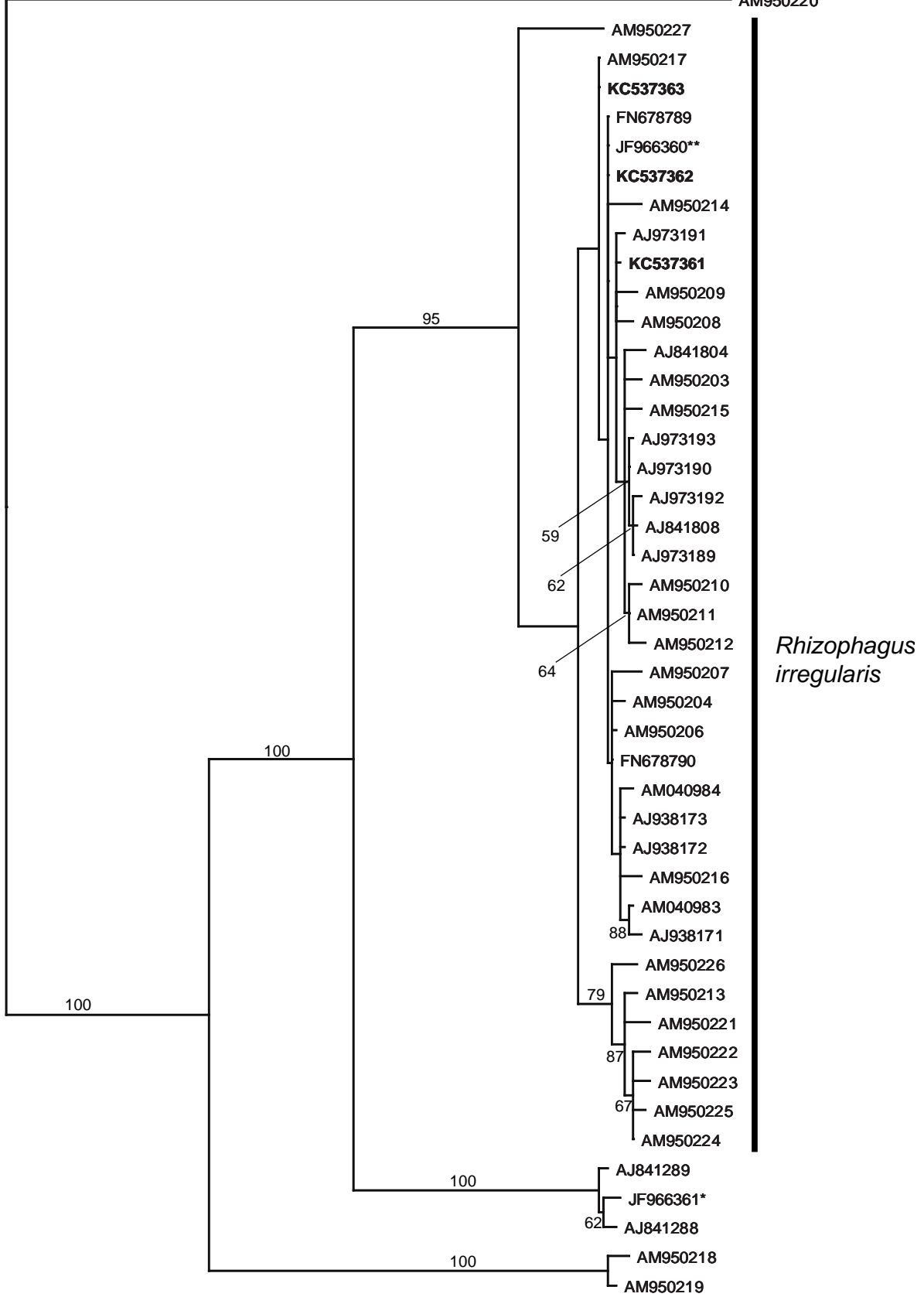
The analysis is based on exon sequences of large subunit of mitochondrial ribosomal DNA. One of the nine most parsimonious trees is presented. Bootstrap values higher than 50% are indicated by the numbers above or below branches. The sequences of the three *R. irregularis* haplotypes obtained in the present study are given in bold.

\* *R. irregularis* isolate 'Chomutov' [1]; \*\* *R. irregularis* isolate PH5 [1].

FN377859  
FN377601

*Rhizophagus clarus*

AM950220



## Reference

1. Krak K, Janoušková M, Čáková P, Vosátka M, Štorchová H. Intraradical Dynamics of Two Coexisting Isolates of the Arbuscular Mycorrhizal Fungus *Glomus intraradices* Sensu Lato as Estimated by Real-Time PCR of Mitochondrial DNA. *Applied and Environmental Microbiology*. 2012;78(10):3630-7. doi: 10.1128/aem.00035-12.