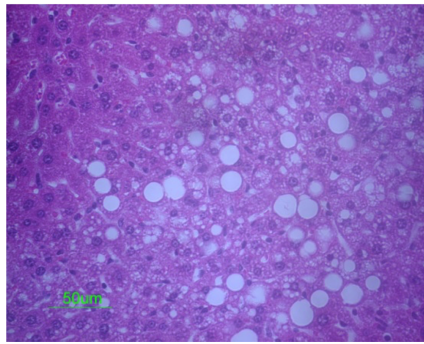
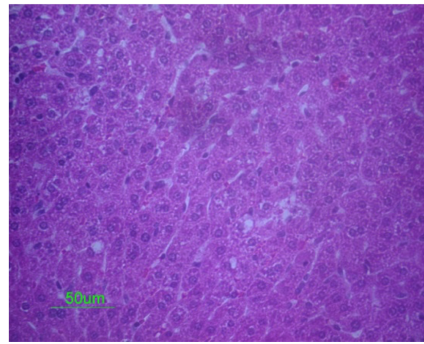


Supplemental Figure S1. CBS protein in offspring of *Tg-R266K* founder. Three offspring of the original founder backcrossed to C57BL/6J were analyzed for liver CBS expression by Western blot. Transgene status is indicated at bottom. All mice were on Zinc-water for 10 days before livers were harvested. Human CBS runs slightly slower than mouse CBS due to the HA epitope tag inserted at the N-terminus.



Tg-R266K *Cbs*^{-/-}

22 days old



Tg-R266K *Cbs*^{+/-}

22 days old

Supplemental Figure S2. H and E staining of the livers of 22 day old *Tg-R266K Cbs*^{-/-} and *Tg-R266K Cbs*^{+/-} mice.