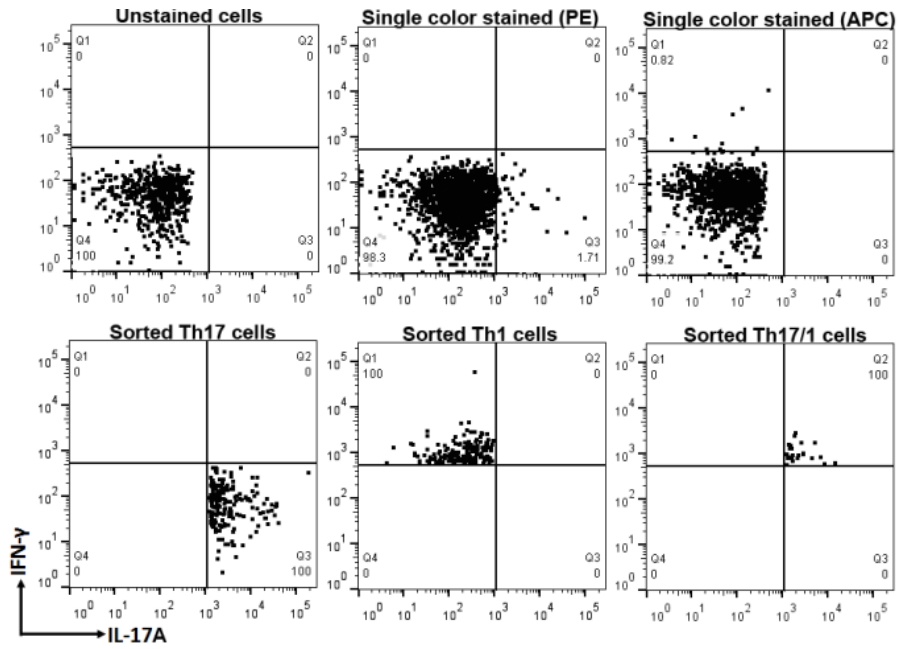
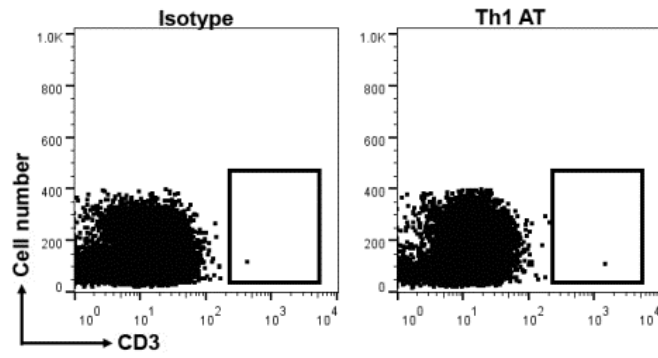


Supplemental Figure 1. Re-challenge of chronic DED. Chronic DED or naïve mice (control) were challenged with desiccating environmental stress for 7 days. (A) DED severity was evaluated by corneal fluorescein staining scores. (n = 10 for re-challenge group and n = 6 for acute group). *, p < 0.05 as compared to the control group. (B) Flow cytometry plots show the IL-17A⁺IFN- γ ⁺ double-positive Th17/1 cell frequencies at day 7.



Supplemental Figure 2. Sorted Th17, Th1, and Th17/1 cells from DED draining lymph nodes. Flow cytometry plots show the staining controls for the cell sorting (upper panel) and the cytokine expressions for each type of sorted cells before their transfer (lower panel).



Supplemental Figure 3. CD3⁺ T cells in the draining lymph nodes of Rag1 KO mice. Flow cytometry plots show no CD3⁺ T cells in the draining lymph nodes in Rag1 KO mice receiving single-positive Th1 cells. AT, adoptive transfer.