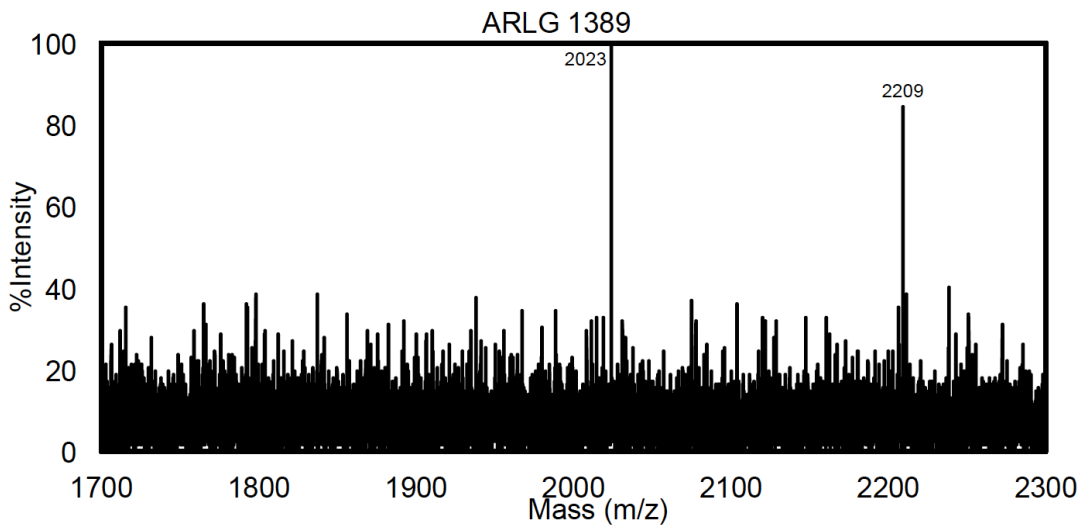
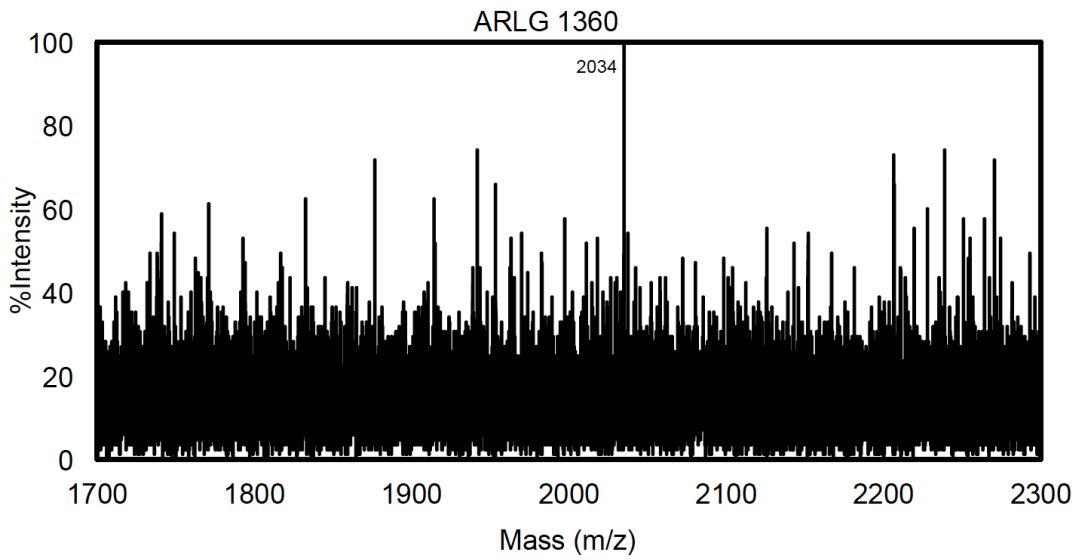
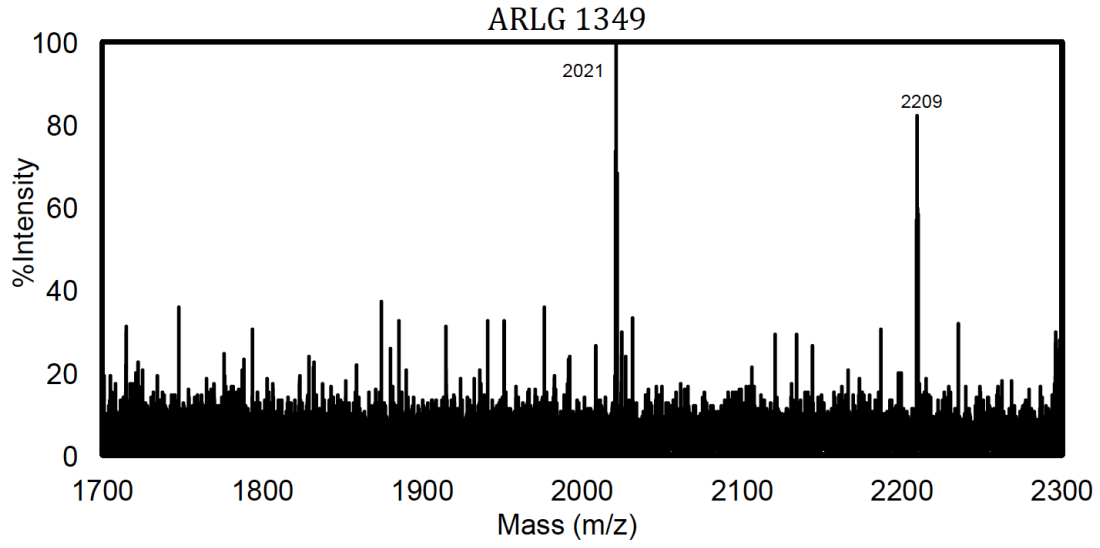
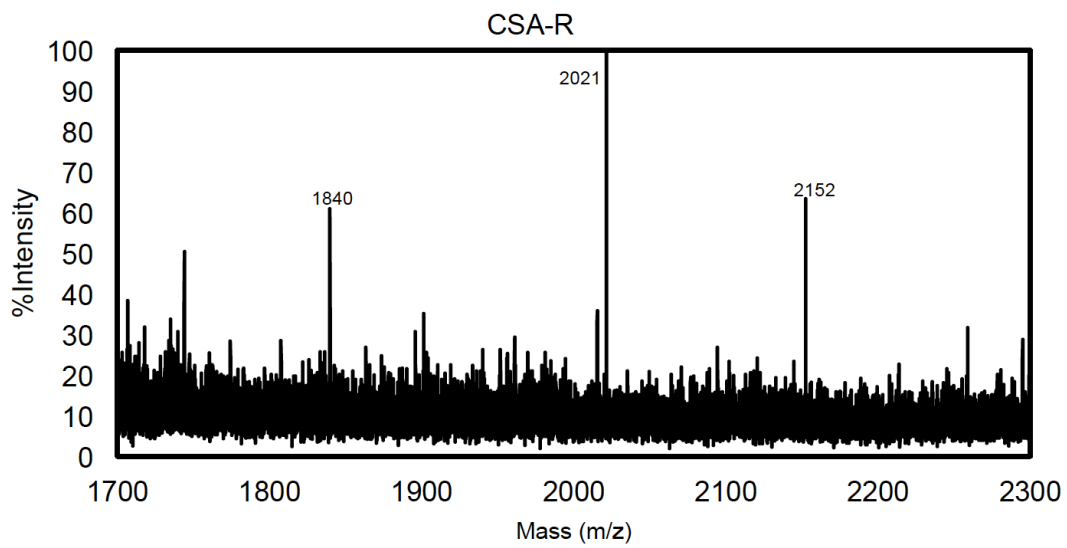
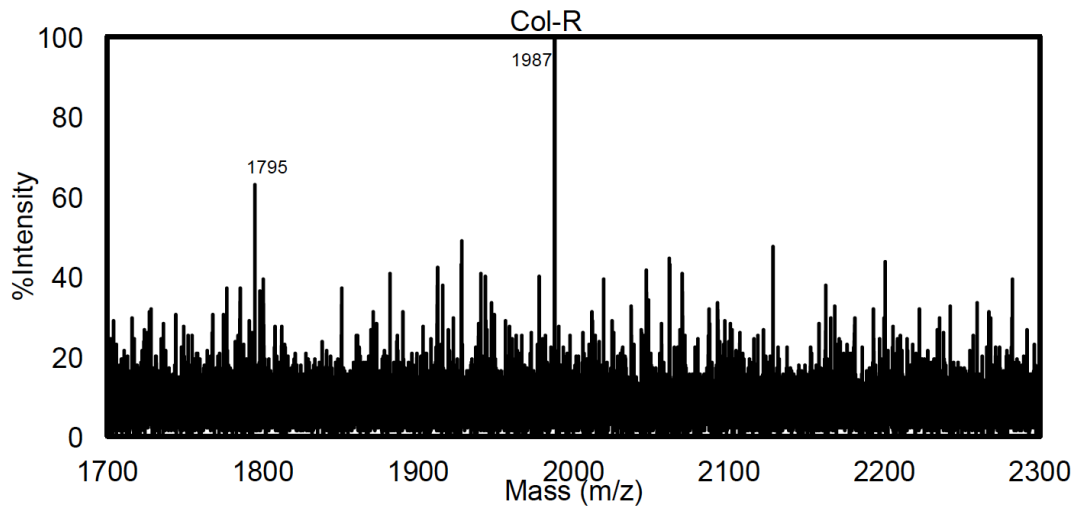
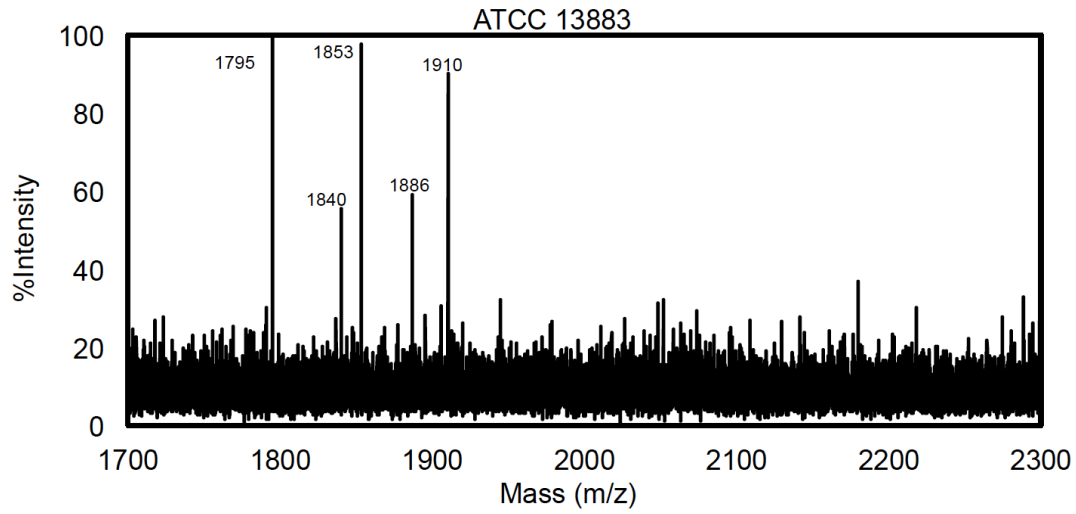


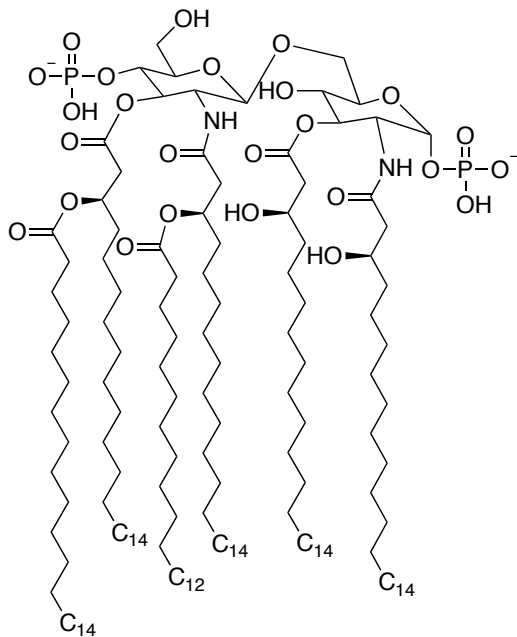
## **Supporting Information for Susceptibility of colistin-resistant, Gram-negative bacteria to antimicrobial peptides and ceragenins**

- Pages 2-3      Mass spectra (ESI, negative ion mode, Agilent 6230 Series TOF Spectrometer) of lipid A isolated from three clinical isolates of colistin-resistant *K. pneumoniae* (ARLG 1349, ARLG 1360 and ARLG 1389), from a colistin-susceptible strain (ATCC 13883) and from strains that were serially exposed to either colistin (Col-R) or CSA-131 (CSA-R).
- Pages 4-6      Proposed structures for lipid A isolated from the indicated strains that match the mass spectral data. Changes from the parent structures are in red. Location of acylation (addition of a fatty acid) and phosphate ester formation may not reflect exact structure (i.e., mass spectral data do not provide positional information for modifications).

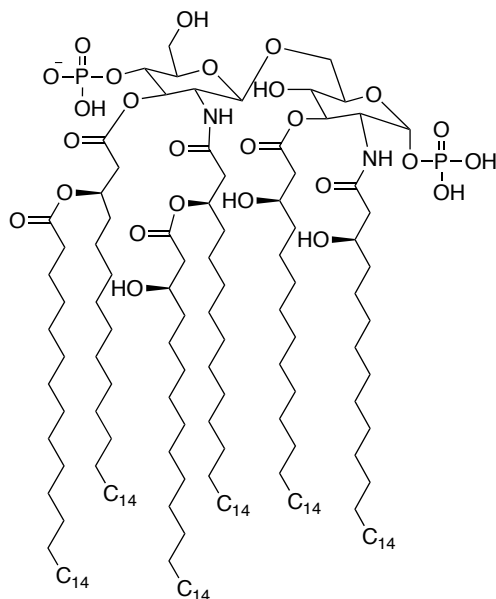




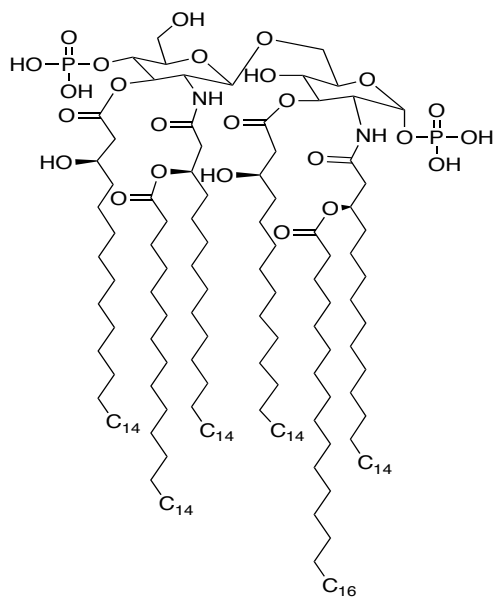
ATCC 13883



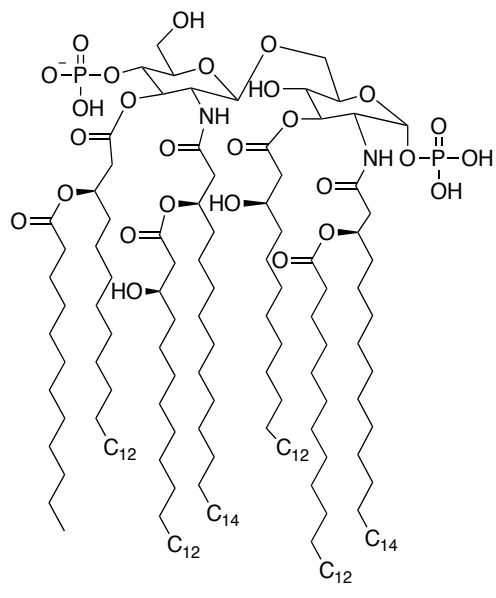
Exact Mass: 1795



Exact Mass: 1840

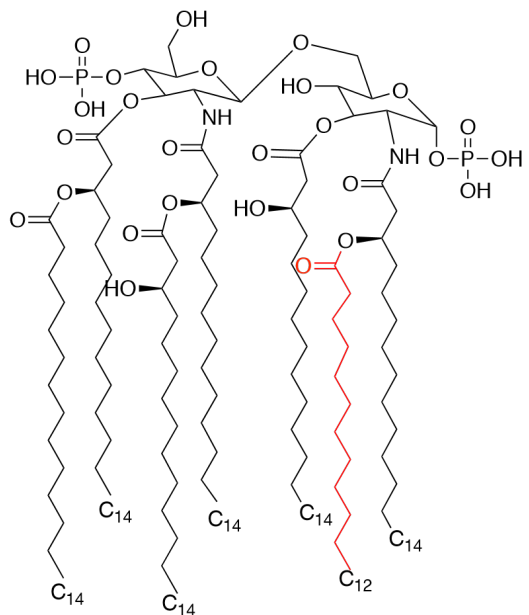


Exact Mass: 1853

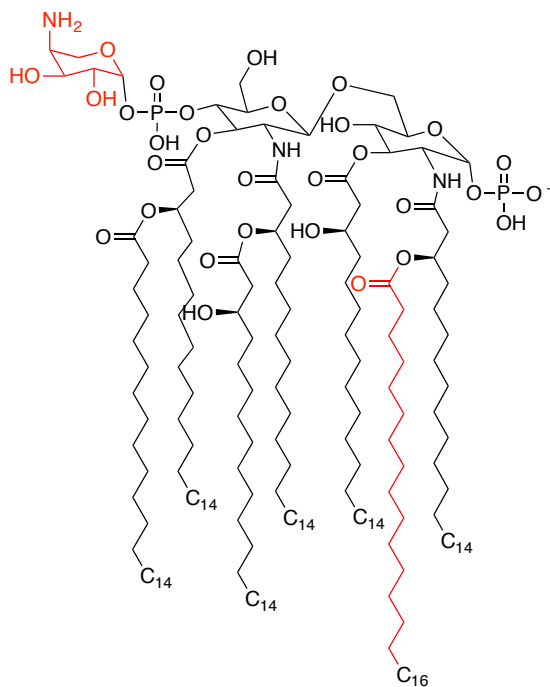


Exact Mass: 1910

ARLG 1349, ARLG 1389

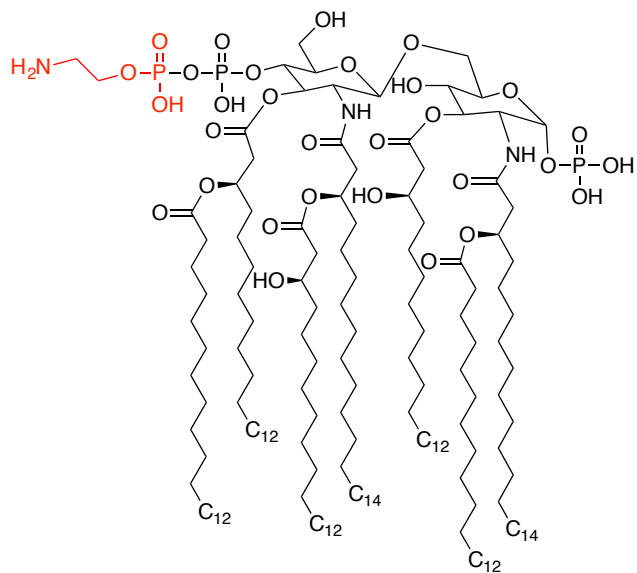


Exact Mass: 2023



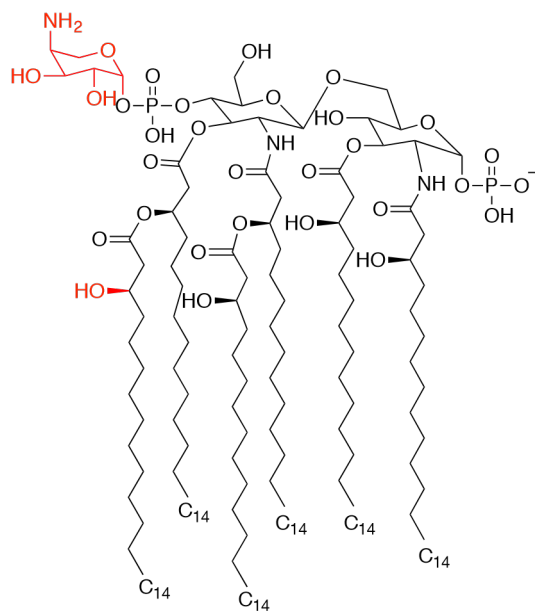
Exact Mass: 2209

ARLG 1360



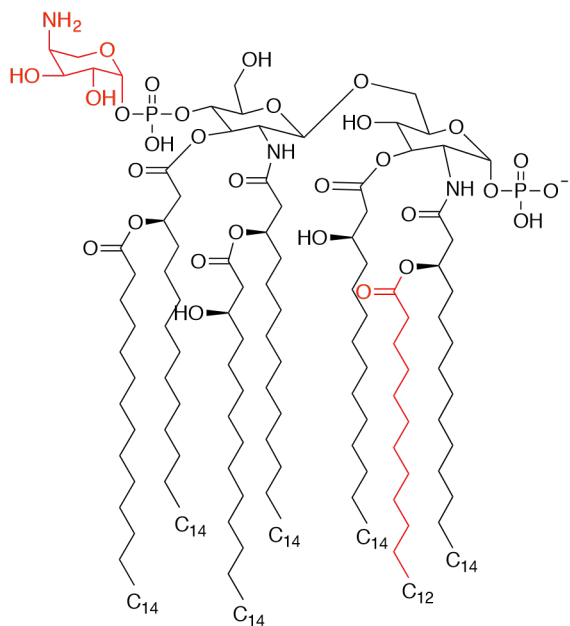
Exact Mass: 2034

Col-R (Colistin Resistant made by serial passaging)



Exact Mass: 1987

CSA-R (CSA resistant made by serial passaging)



Exact Mass: 2153