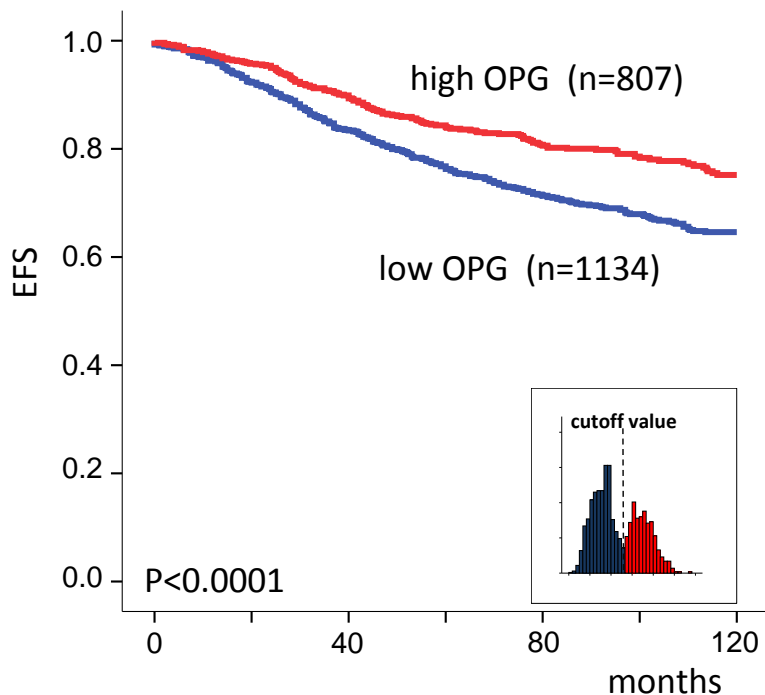
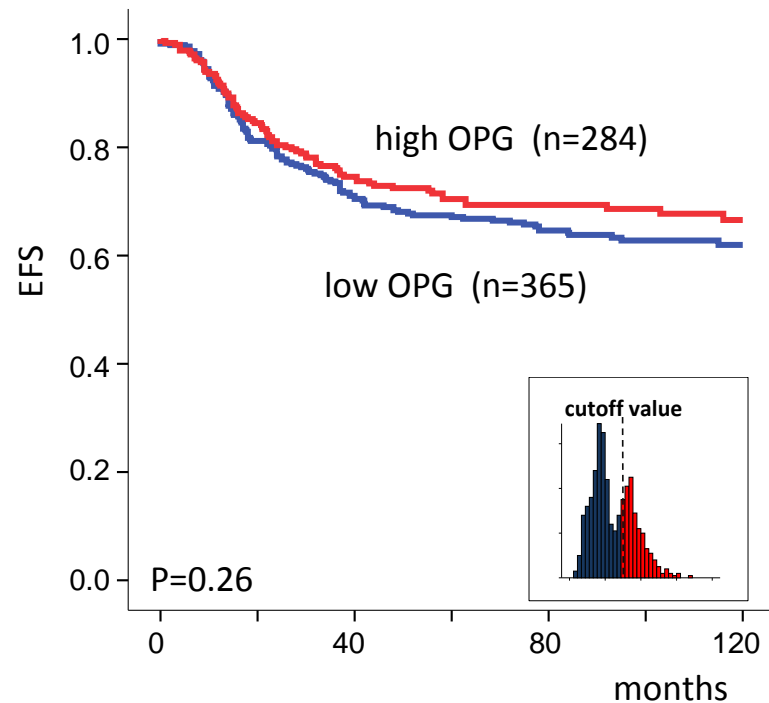


A**ER positive tumors****B****ER negative tumors****Supplementary Figure S3: Prognostic value of OPG in the combined cohorts**

Kaplan-Meier analysis of all patients from the combined cohorts with ER positive (A) or ER negative (B) tumors according to OPG mRNA expression. OPG was dichotomized using the cutoff derived from its bimodal expression (Affymetrix probeset 204933_s_at). The small inset figures display the bimodal distribution of expression values and the applied cutoff (the same cutoff was used as for the analyses of individual datasets).