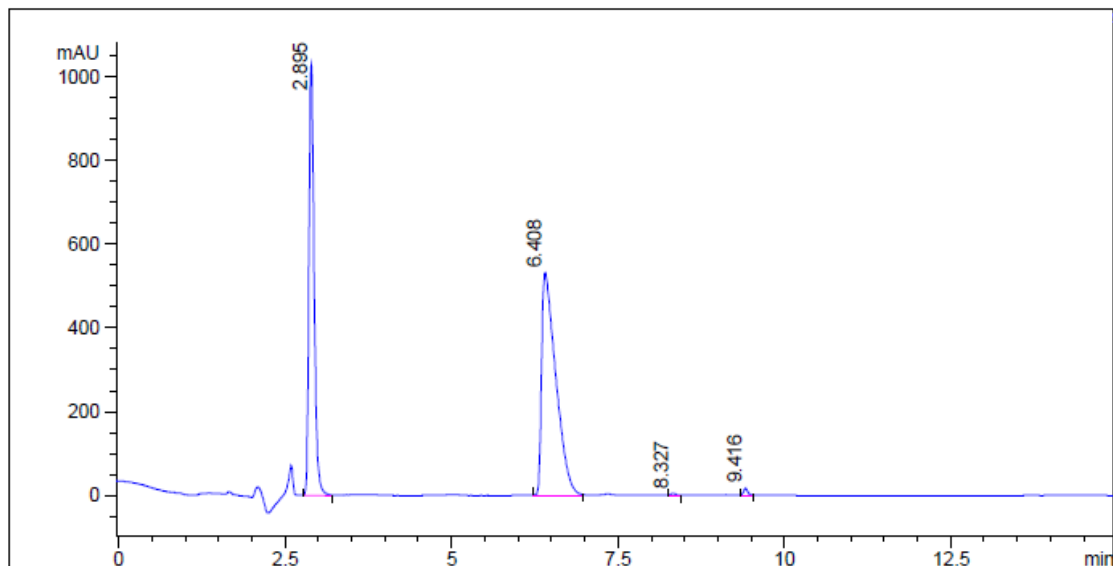


S1 Fig. HPLC and NMR spectra for Xamoterol (S), Xamoterol (R), STD-101-B1 to B9, D1 to D6, and E

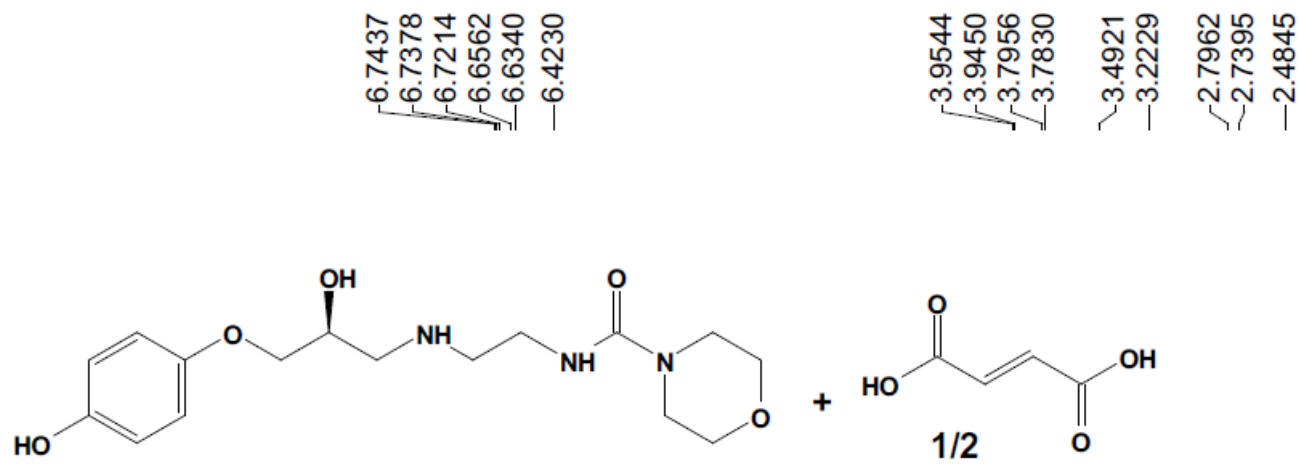
Xamoterol (S)



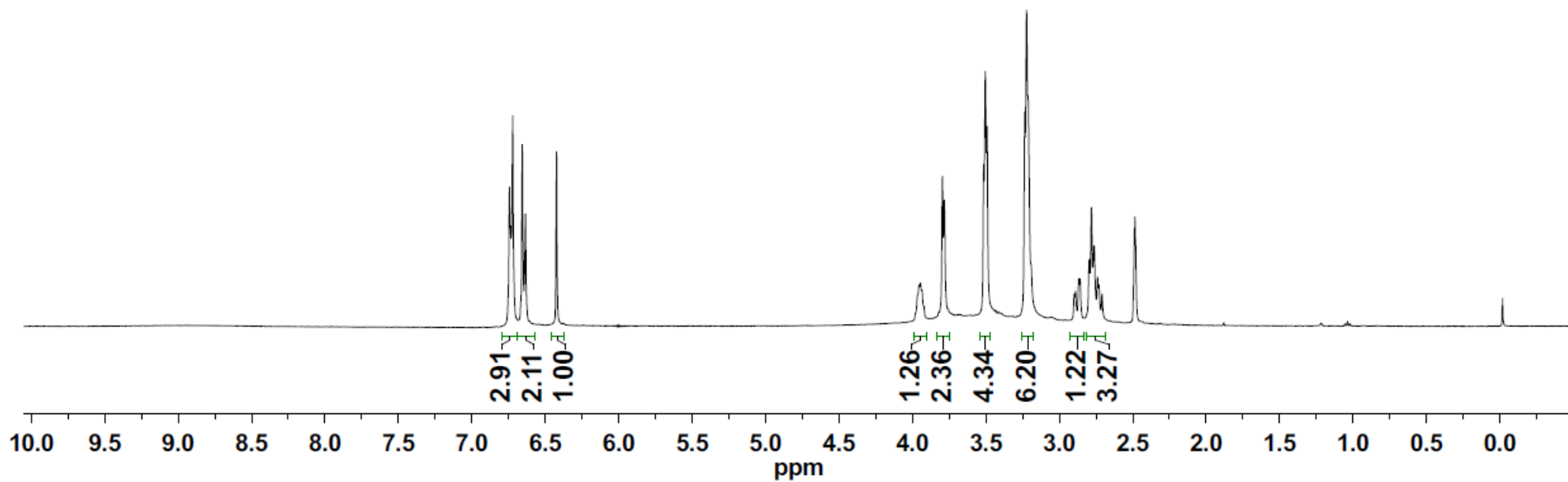
=====  
Area Percent Report  
=====

Signal 1: DAD1 A, Sig=220,4 Ref=off

Peak #	RT [min]	Type	Width [min]	Height	Area	Area %
1	2.895	MM	0.091	65.167	5617.917	41.359
2	6.408	BB	0.217	33.535	7877.501	57.994
3	8.327	BB	0.064	0.280	18.450	0.136
4	9.416	BB	0.066	1.018	69.460	0.511

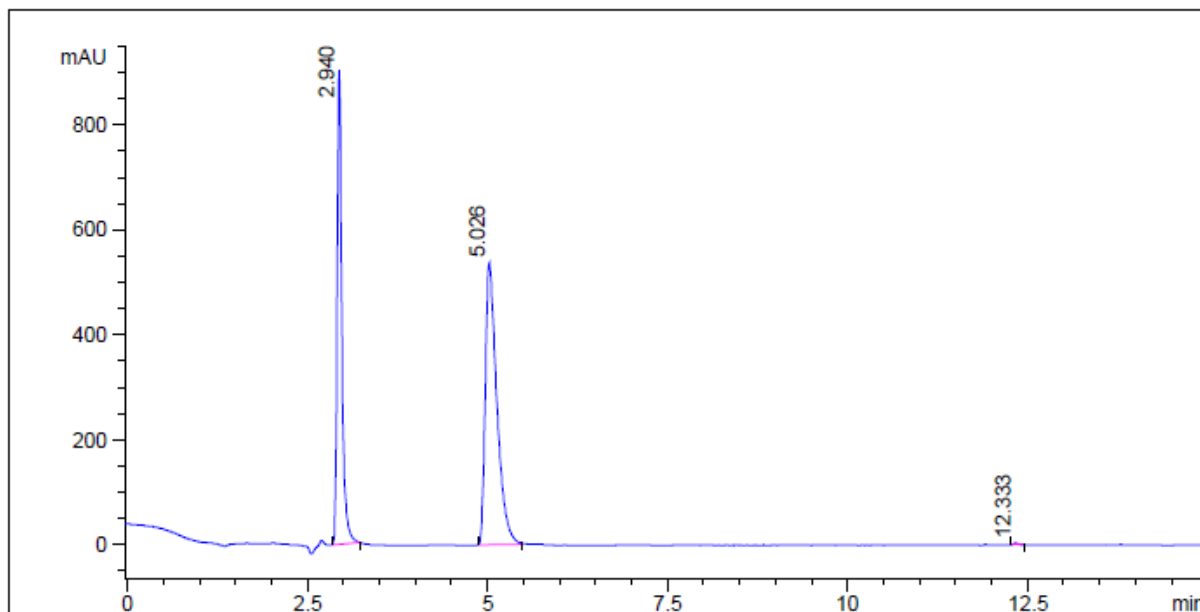


Xamoterol (S)  
 400MHz <sup>1</sup>HNMR DMSO-d<sub>6</sub>



—0.0189

# Xamoterol (R)

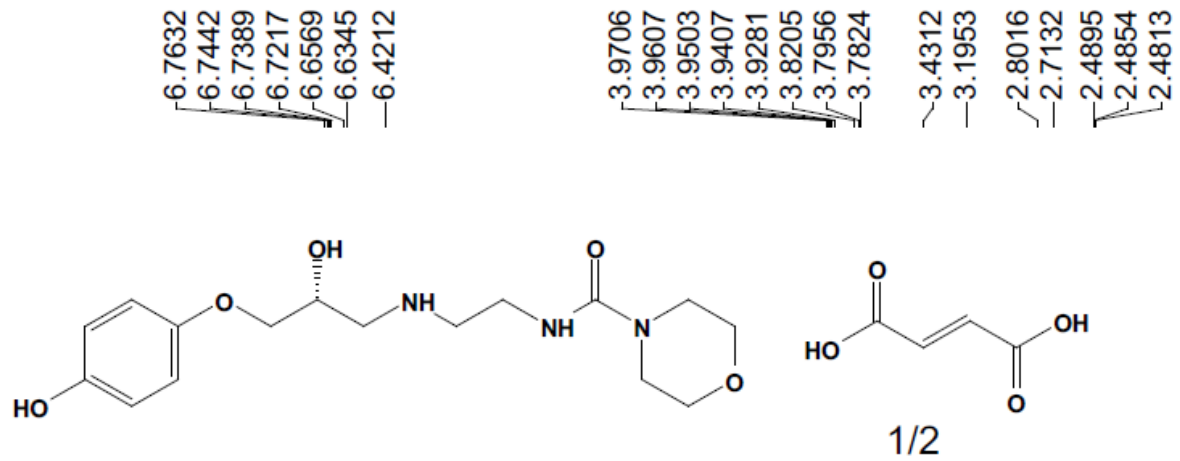


=====  
Area Percent Report  
=====

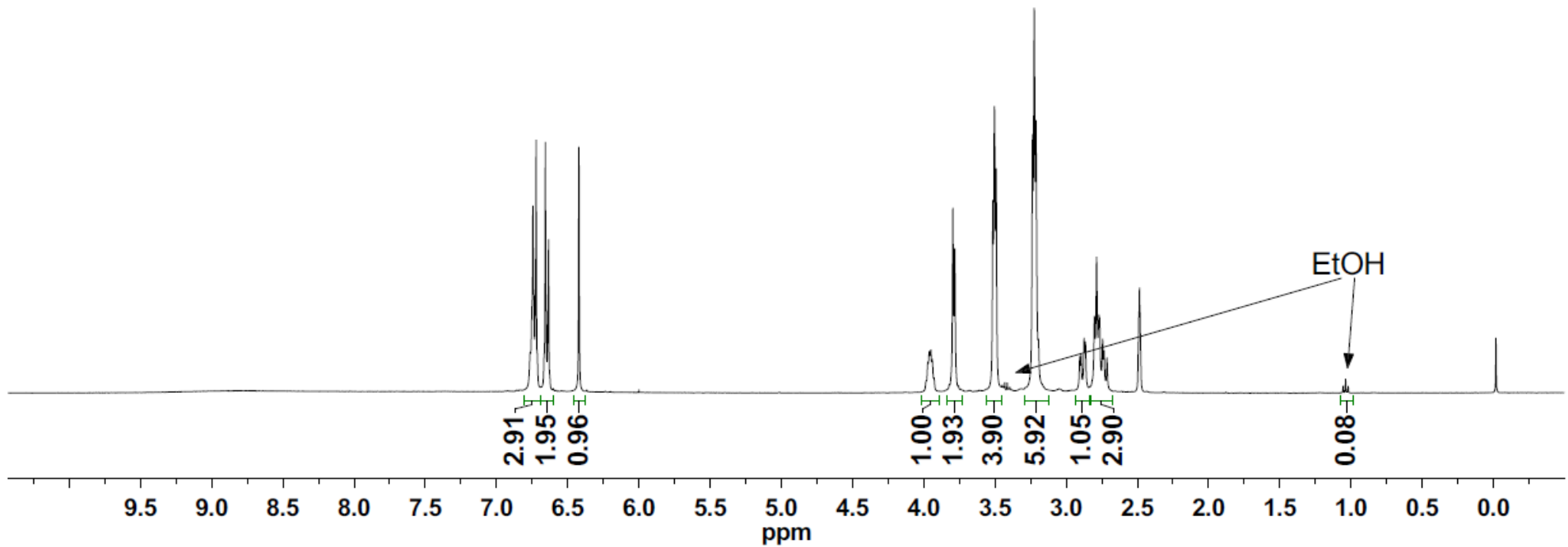
Signal 1: DAD1 A, Sig=220,4 Ref=off

Peak #	RT [min]	Type	Width [min]	Height	Area	Area %
1	2.940	MM	0.076	62.591	4116.884	40.822
2	5.026	BB	0.163	37.154	5950.455	59.003
3	12.333	BB	0.074	0.255	17.608	0.175

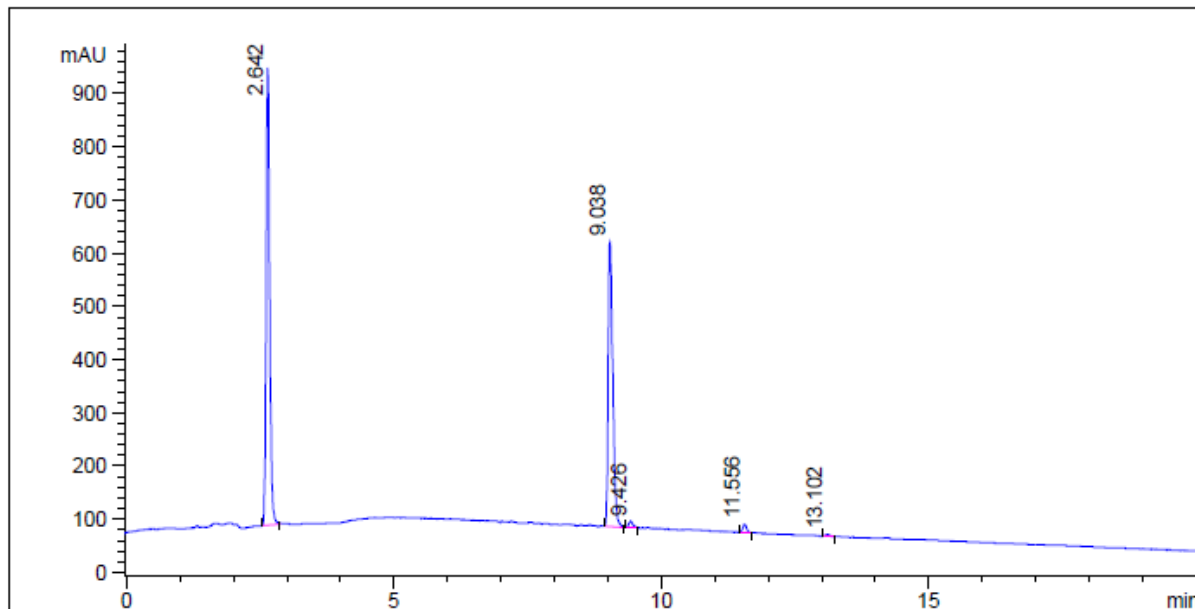
=====



Xamoterol (R)  
 400MHz <sup>1</sup>HNMR DMSO-d<sub>6</sub>



STD-101-B1

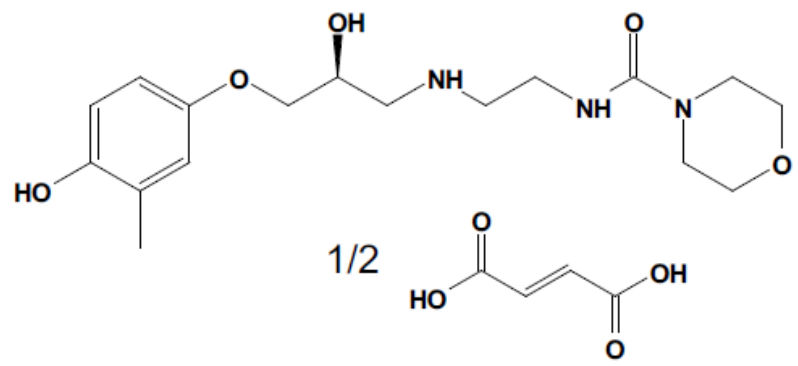


=====  
Area Percent Report  
=====

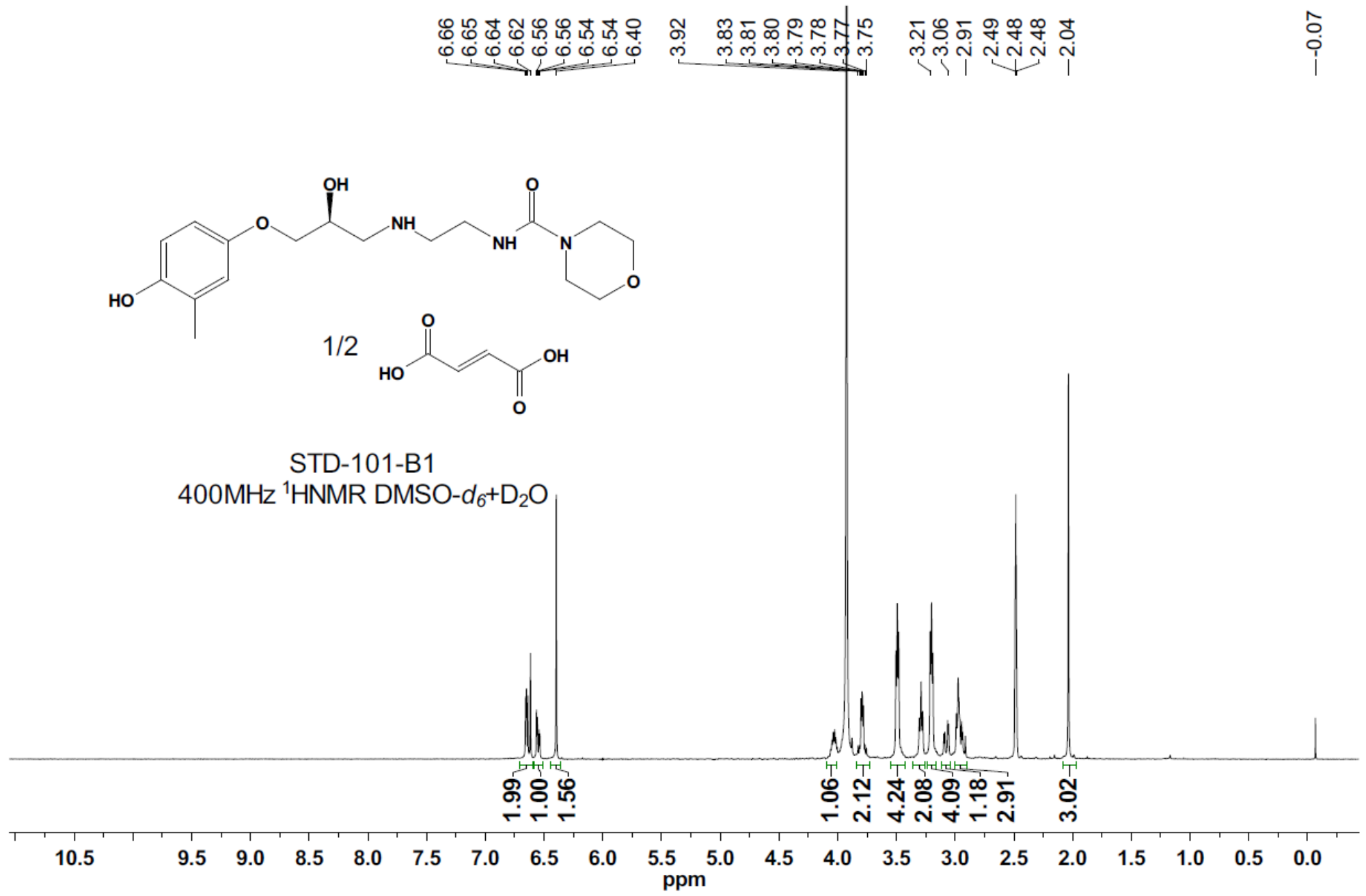
Signal 1: DAD1 A, Sig=220,4 Ref=off

Peak #	RT [min]	Type	Width [min]	Height	Area	Area %
1	2.642	BB	0.069	60.396	3951.477	54.116
2	9.038	BB	0.092	37.413	3190.146	43.689
3	9.426	BB	0.080	0.846	63.986	0.876
4	11.556	BB	0.078	1.094	77.589	1.063
5	13.102	BB	0.079	0.252	18.717	0.256

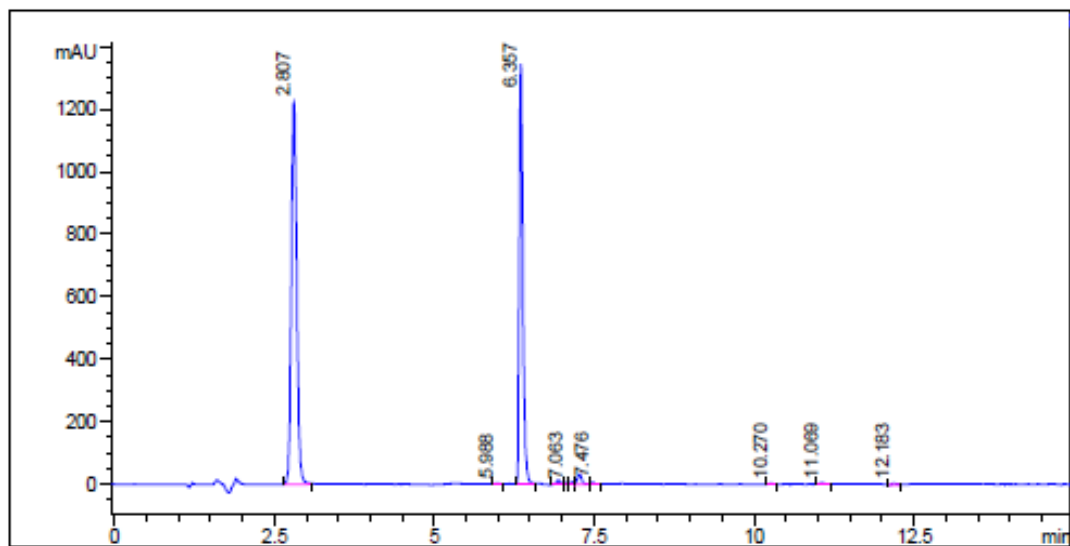
=====



STD-101-B1  
 400MHz <sup>1</sup>HNMR DMSO-d<sub>6</sub>+D<sub>2</sub>O



STD-101-B2

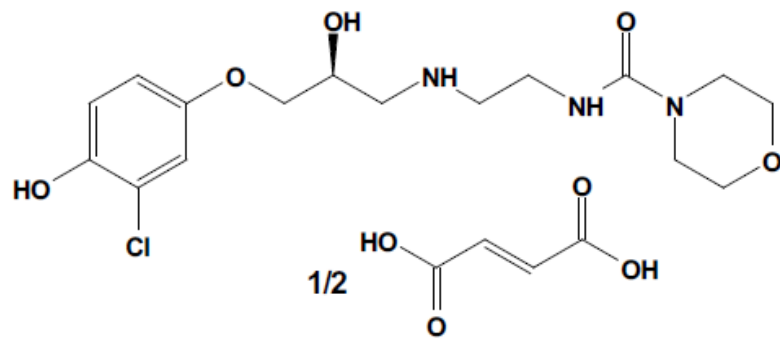


=====  
 Area Percent Report  
 =====

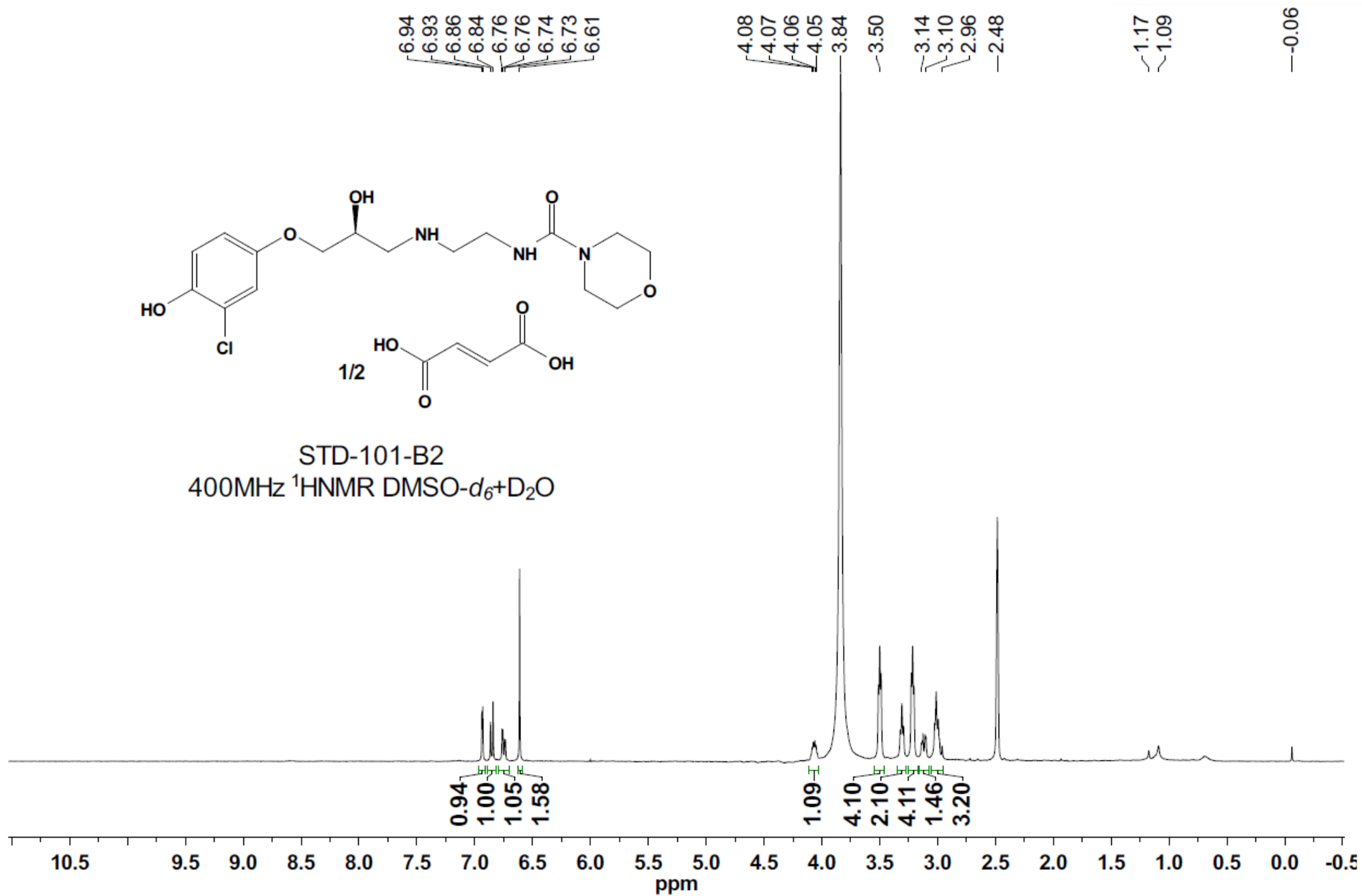
Signal 1: DAD1 A, Sig=220,16 Ref=off

Peak #	RT [min]	Type	Width [min]	Height	Area	Area %
1	2.807	BB	0.093	46.136	7235.272	55.747
2	5.988	BB	0.059	0.108	11.110	0.086
3	6.357	BB	0.063	50.758	5379.355	41.447
4	6.940	BV	0.069	0.529	63.537	0.490
5	7.063	VV	0.061	0.213	22.896	0.176
6	7.156	VV	0.057	0.290	28.395	0.219
7	7.276	VB	0.077	1.259	157.849	1.216
8	7.476	BB	0.058	0.237	23.434	0.181
9	10.270	BB	0.057	0.123	12.150	0.094
10	11.069	BB	0.079	0.168	22.468	0.173
11	12.183	BB	0.071	0.178	22.373	0.172

=====

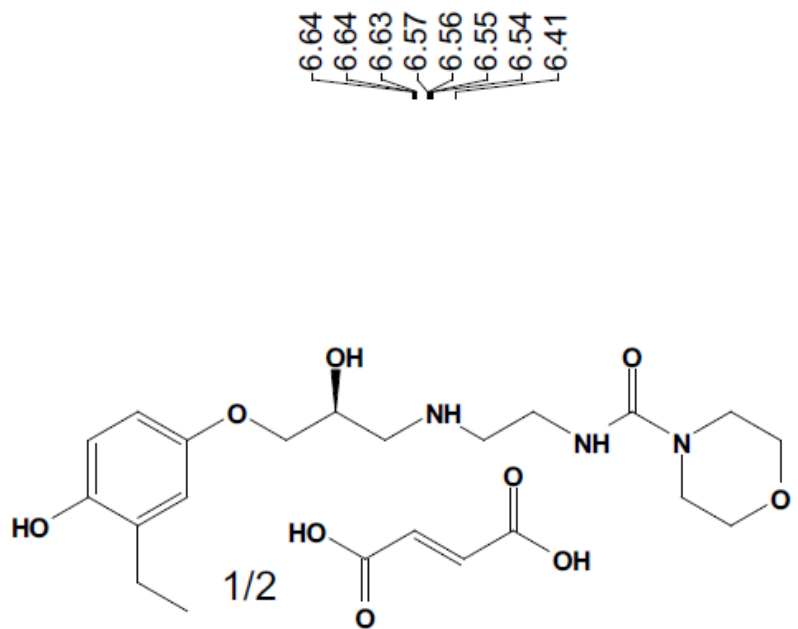


STD-101-B2  
400MHz  $^1\text{H}$ NMR DMSO- $d_6$ +D $_2$ O









STD-101-B3  
400MHz <sup>1</sup>HNMR DMSO-d<sub>6</sub>+D<sub>2</sub>O

6.64  
6.64  
6.63  
6.57  
6.56  
6.55  
6.54  
6.41

4.02  
4.01  
3.80

3.49  
3.21  
3.04  
2.88  
2.48  
2.46  
2.44  
2.42

1.08  
1.06  
1.04

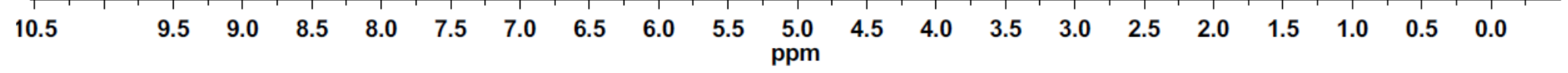
-0.05

1.94  
1.00  
1.26

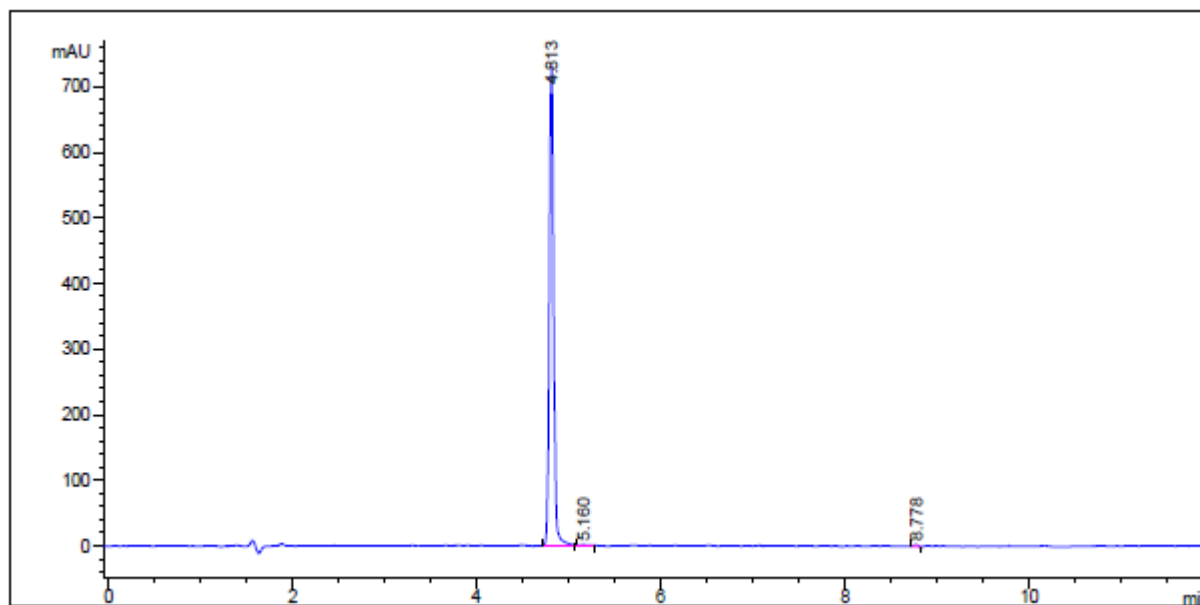
0.97  
2.16  
4.07

2.13  
3.98  
1.34  
3.24  
1.81

2.96



STD-101-B4



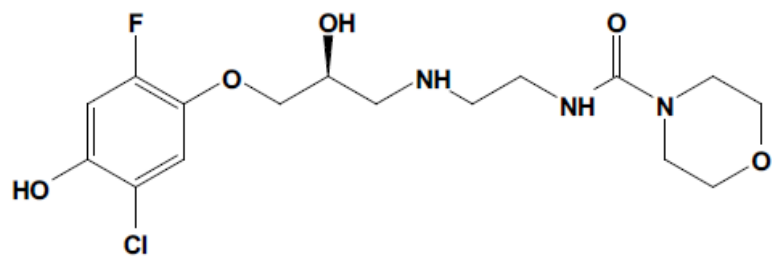
=====  
Area Percent Report  
=====

Signal 1: DAD1 A, Sig=220,4 Ref=off  
Signal has been modified after loading from rawdata file!

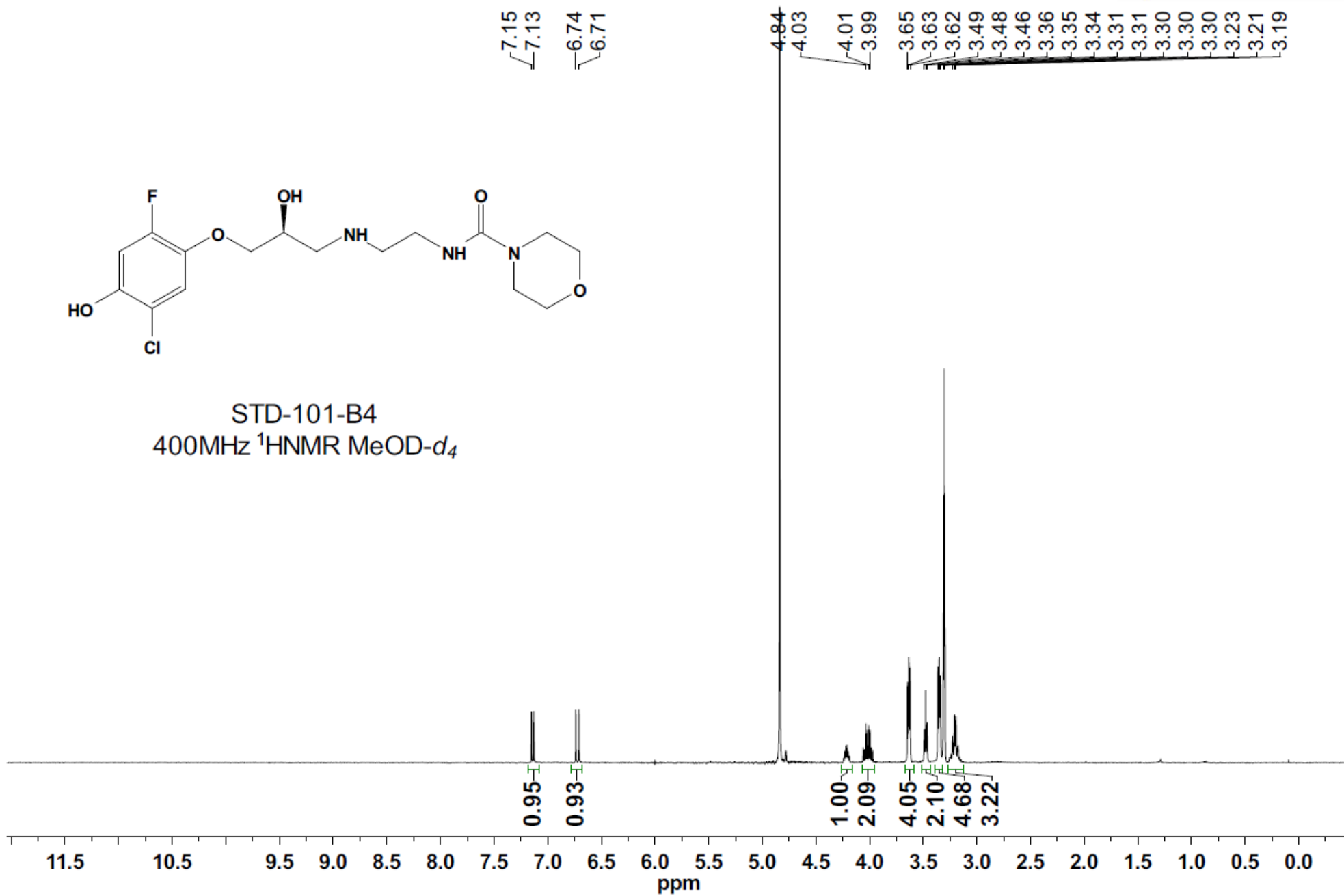
Peak #	RetTime [min]	Type	Width [min]	Area [mAU*s]	Height [mAU]	Area %
1	4.813	BB	0.0527	2439.61719	736.07660	99.0070
2	5.160	BB	0.1032	13.66538	1.71004	0.5546
3	8.778	BV	0.0505	10.80243	3.27725	0.4384

Totals :                   2464.08500   741.06389

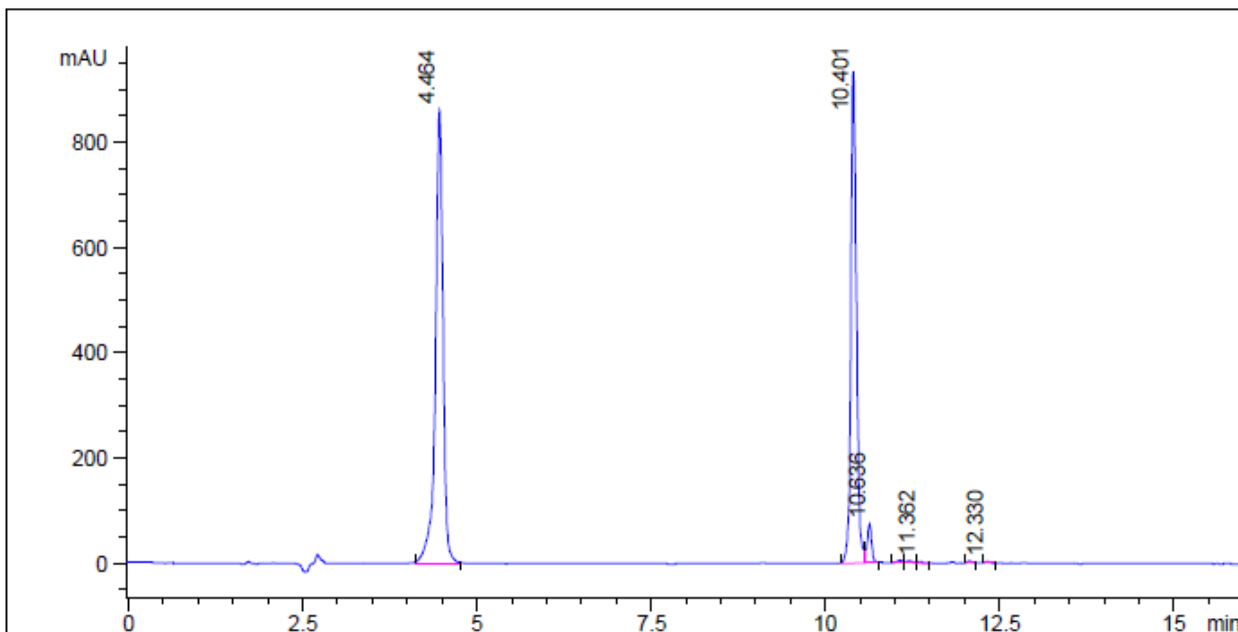
=====



STD-101-B4  
400MHz <sup>1</sup>HNMR MeOD-d<sub>4</sub>



STD-101-B5

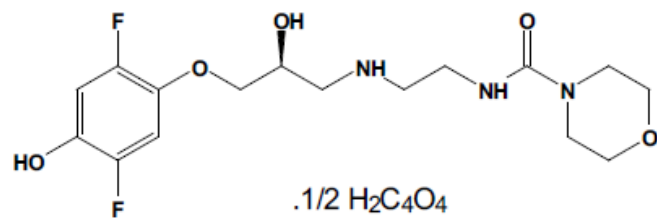


=====  
 Area Percent Report  
 =====

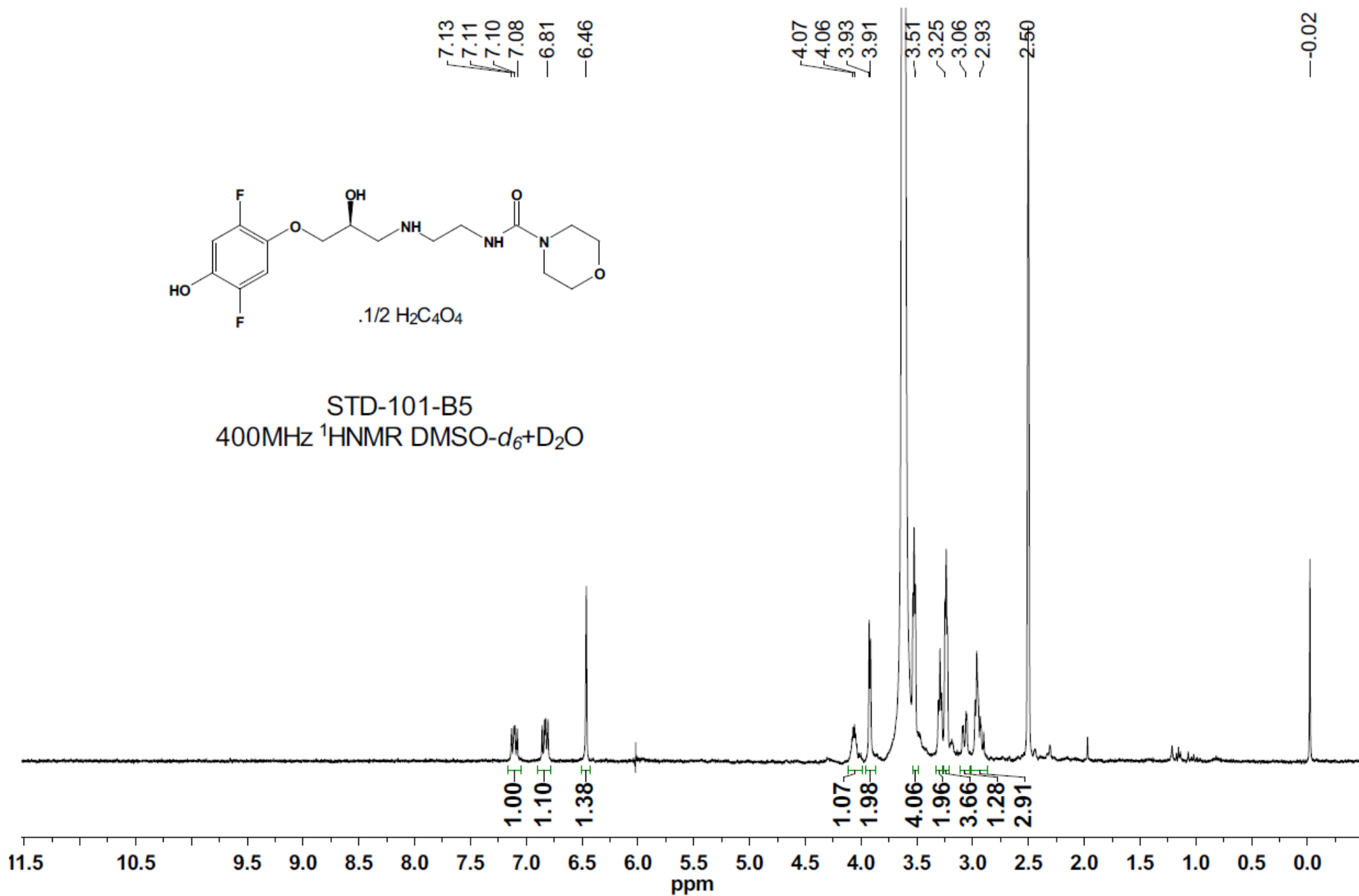
Signal 1: DAD1 A, Sig=220,16 Ref=off

Peak #	RT [min]	Type	Width [min]	Height	Area	Area %
1	4.464	BB	0.117	45.579	6586.832	53.728
2	10.401	BV	0.085	49.459	5232.674	42.682
3	10.636	VB	0.070	3.918	340.150	2.775
4	11.074	BV	0.081	0.264	27.774	0.227
5	11.207	VV	0.093	0.236	27.107	0.221
6	11.362	VB	0.066	0.163	13.753	0.112
7	12.071	BB	0.063	0.206	16.418	0.134
8	12.330	BB	0.068	0.176	14.867	0.121

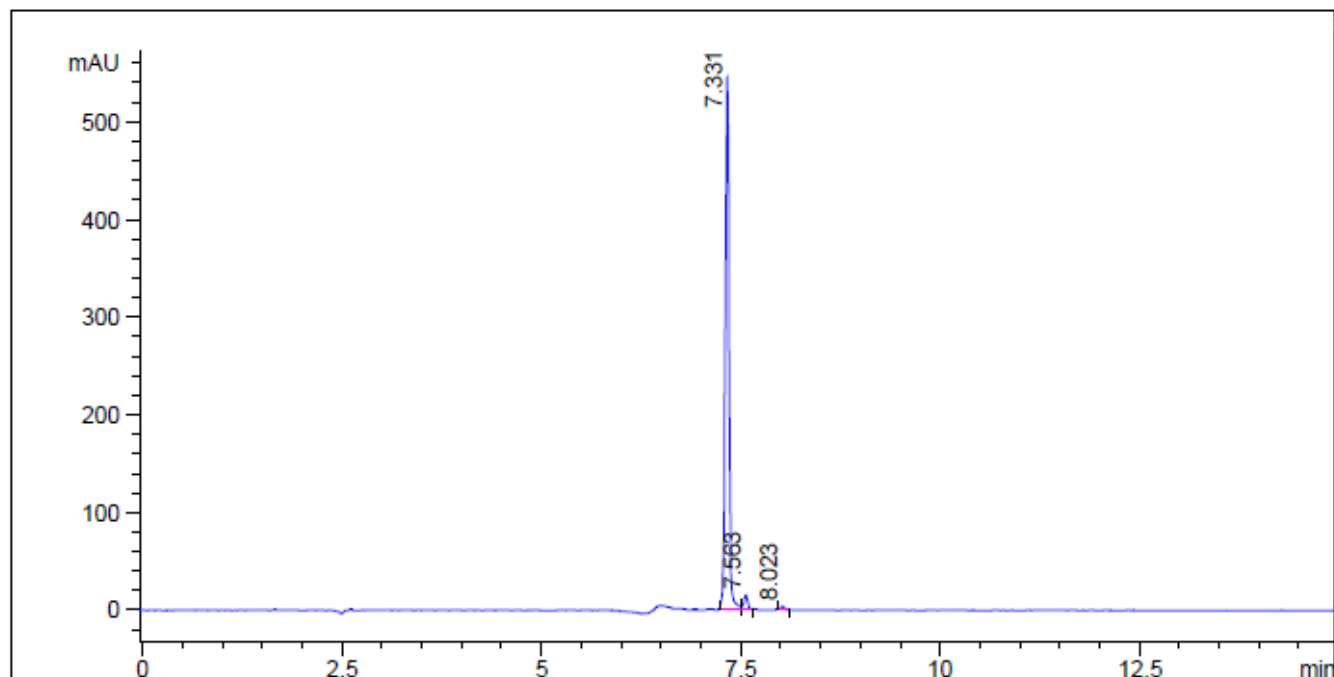
=====  
 =====



STD-101-B5  
400MHz <sup>1</sup>HNMR DMSO-*d*<sub>6</sub>+D<sub>2</sub>O



STD-101-B6

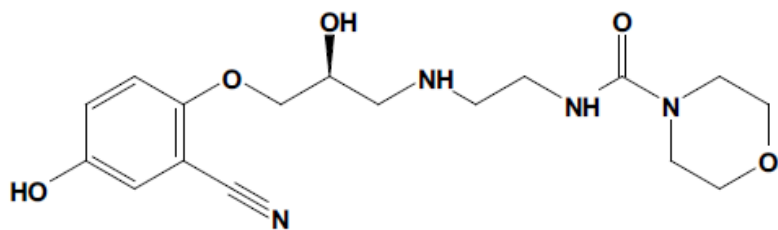


=====  
Area Percent Report  
=====

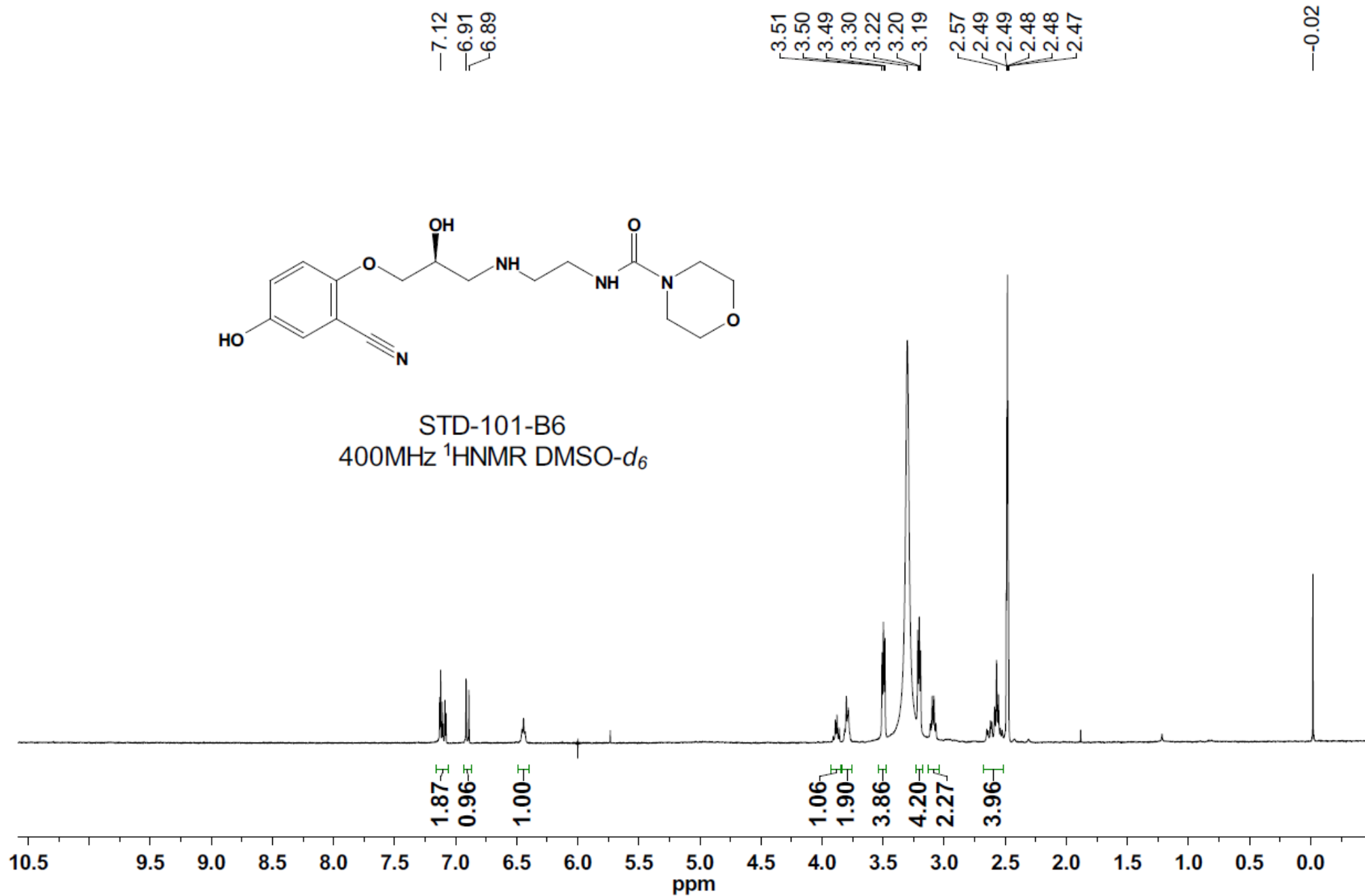
Signal 1: DAD1 A, Sig=220,16 Ref=off

Peak #	RT [min]	Type	Width [min]	Height	Area	Area %
1	7.331	BB	0.051	96.713	1824.201	96.575
2	7.563	BB	0.053	2.646	53.425	2.828
3	8.023	BB	0.048	0.642	11.277	0.597

-----

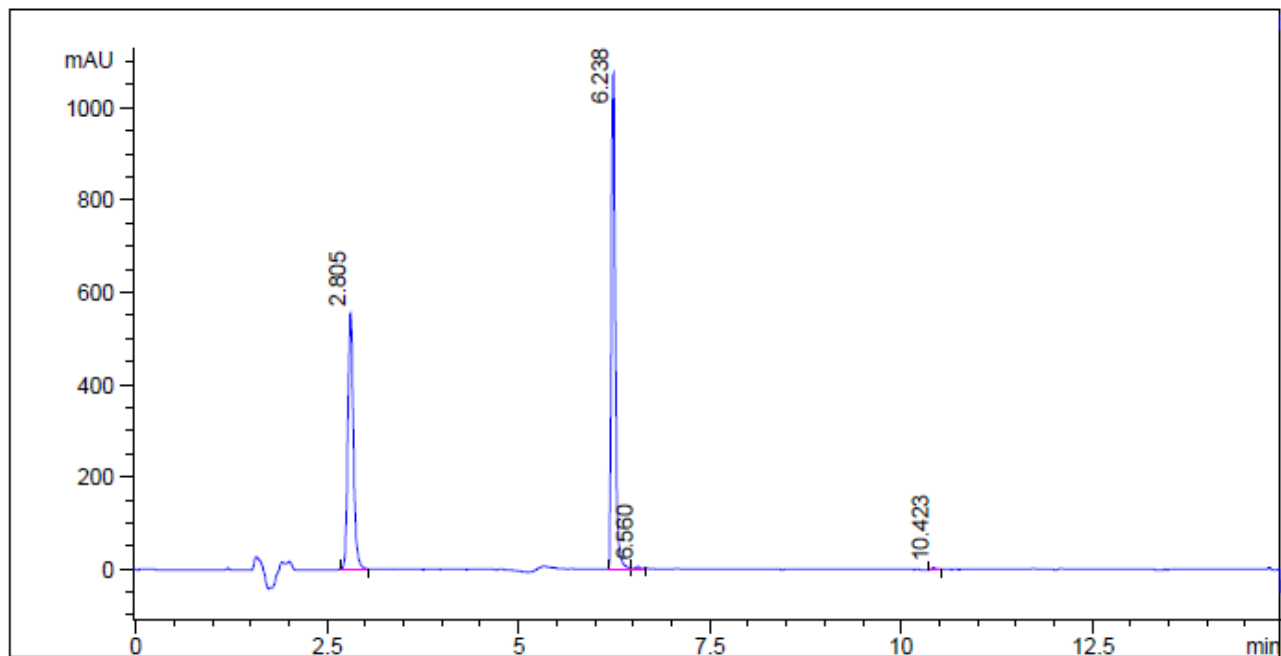


STD-101-B6  
400MHz <sup>1</sup>HNMR DMSO-d<sub>6</sub>





STD-101-B7

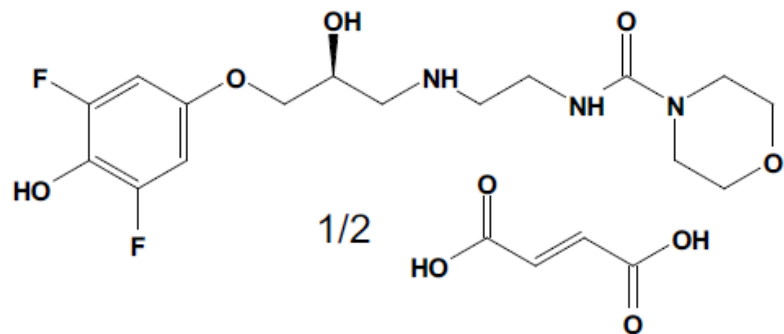


=====  
Area Percent Report  
=====

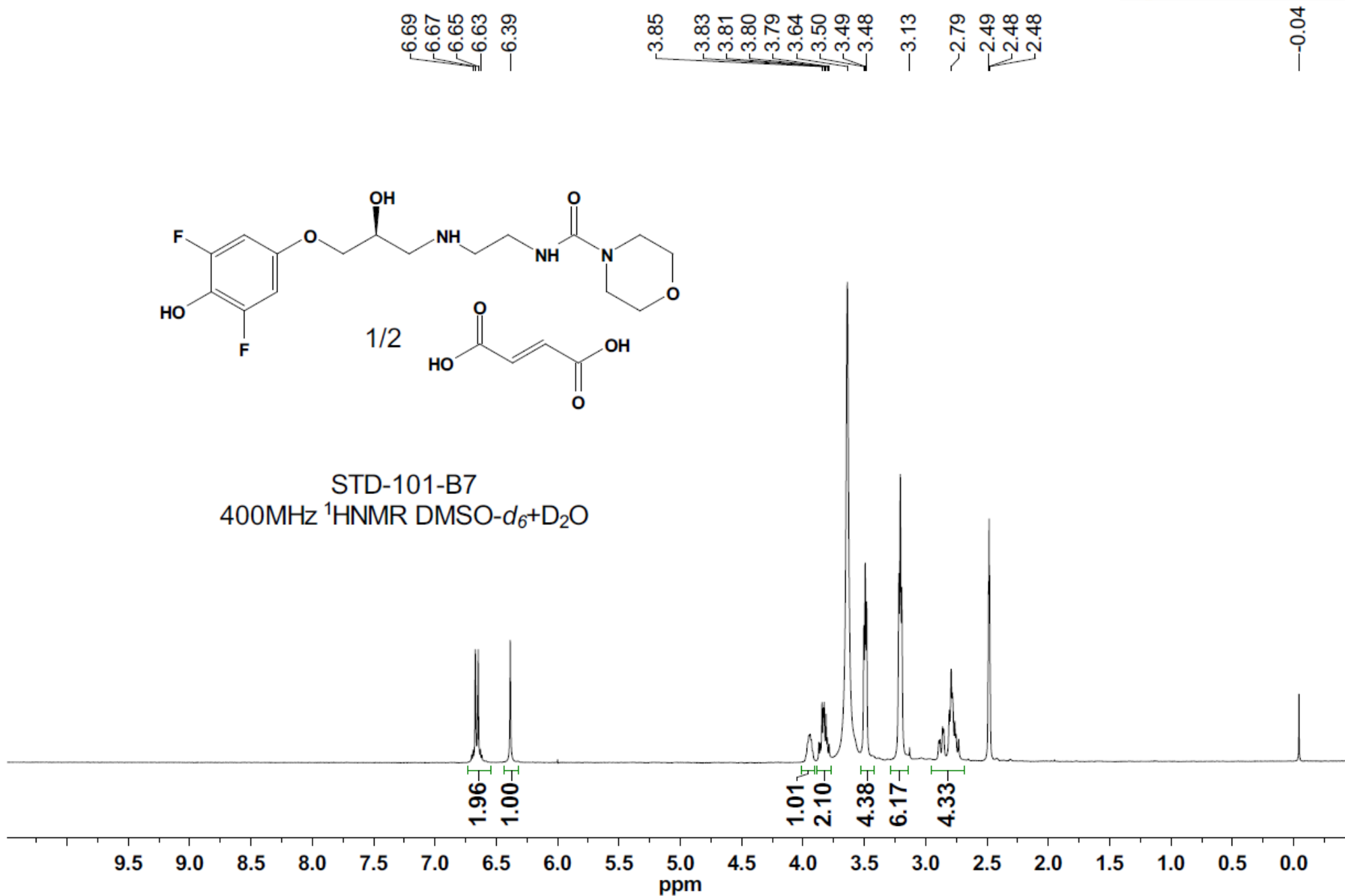
Signal 1: DAD1 A, Sig=220,16 Ref=off

Peak #	RT [min]	Type	Width [min]	Height	Area	Area %
1	2.805	BB	0.078	33.802	2788.547	42.609
2	6.238	BB	0.052	65.673	3719.376	56.832
3	6.560	BB	0.071	0.295	23.590	0.360
4	10.423	BB	0.054	0.231	12.941	0.198

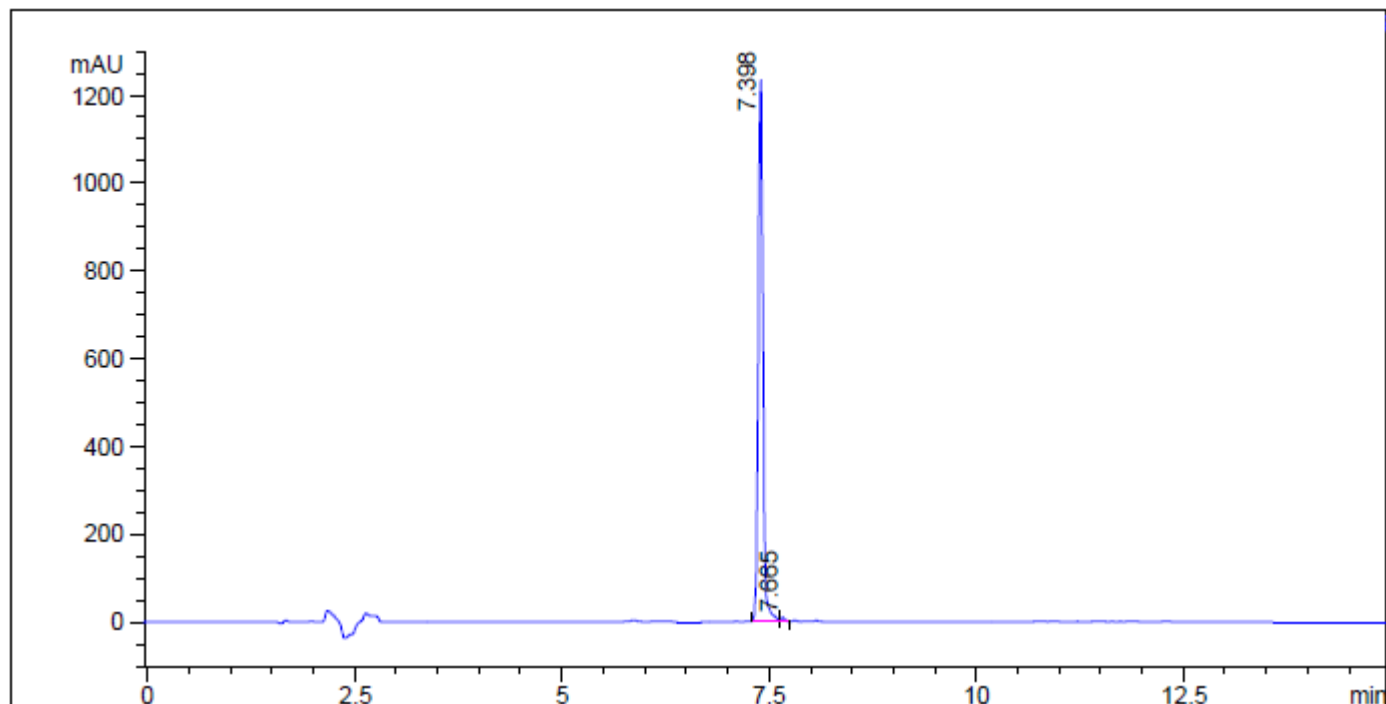
=====



STD-101-B7  
 400MHz <sup>1</sup>HNMR DMSO-d<sub>6</sub>+D<sub>2</sub>O



STD-101-B8

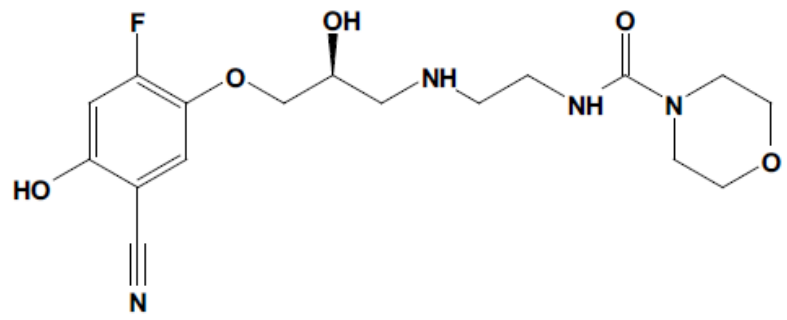


=====  
Area Percent Report  
=====

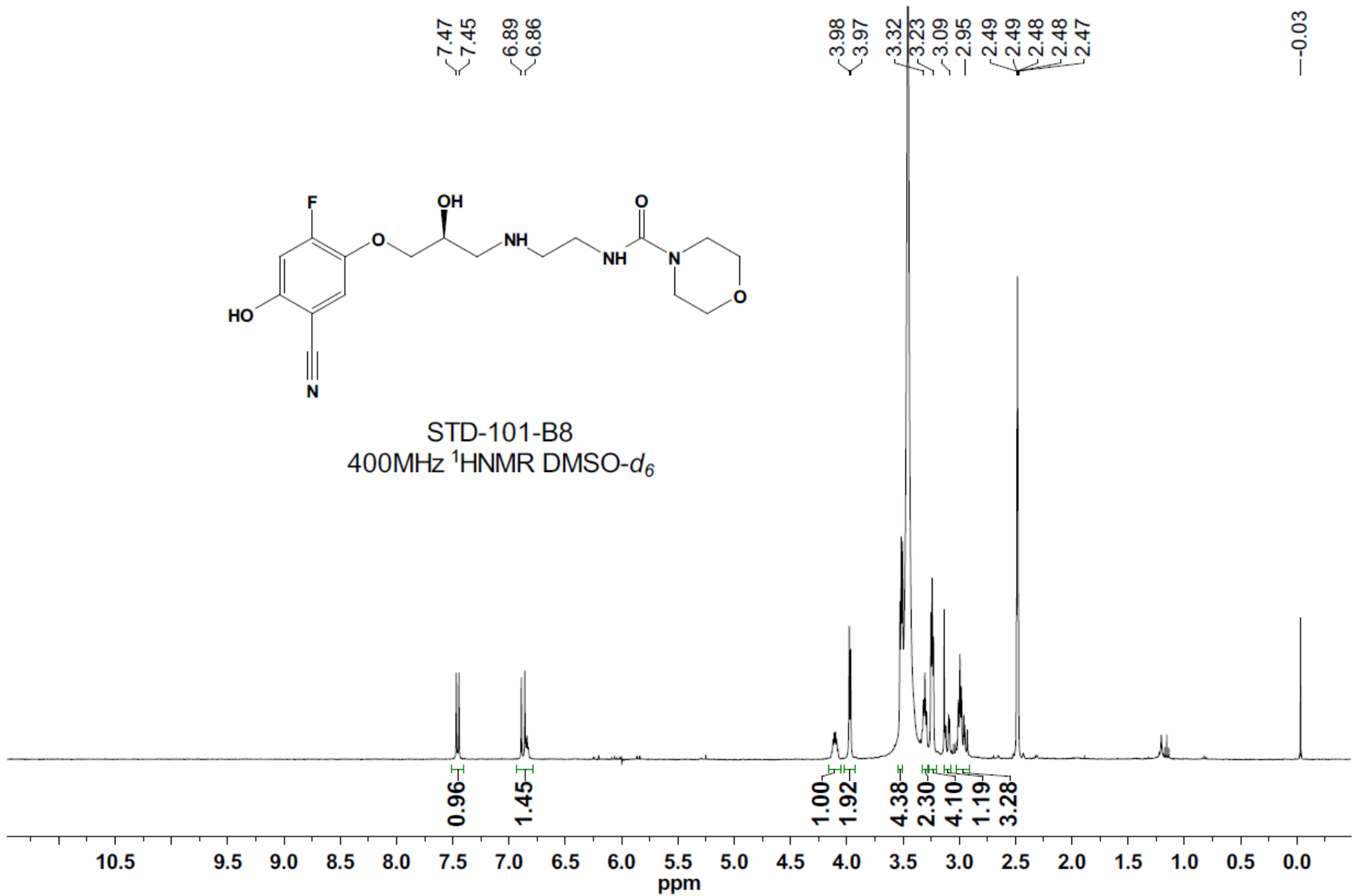
Signal 1: DAD1 A, Sig=220,16 Ref=off

Peak #	RT [min]	Type	Width [min]	Height	Area	Area %
1	7.398	BV	0.059	99.305	4771.844	99.300
2	7.665	VB	0.057	0.695	33.639	0.700

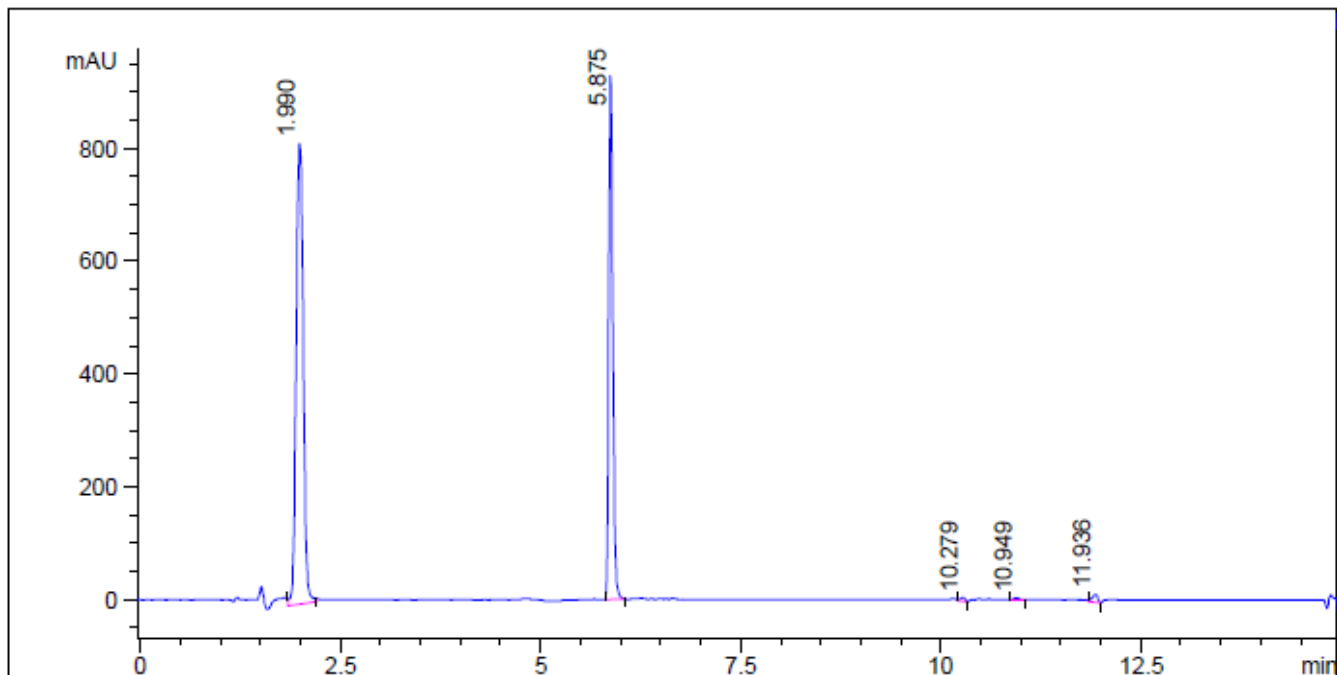
=====



STD-101-B8  
400MHz <sup>1</sup>HNMR DMSO-d<sub>6</sub>



STD-101-B9

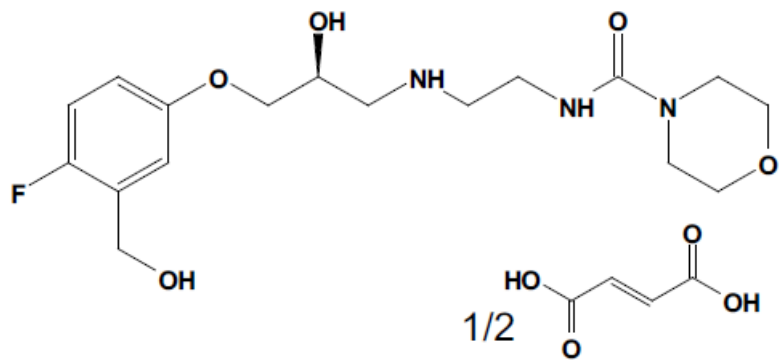


=====  
Area Percent Report  
=====

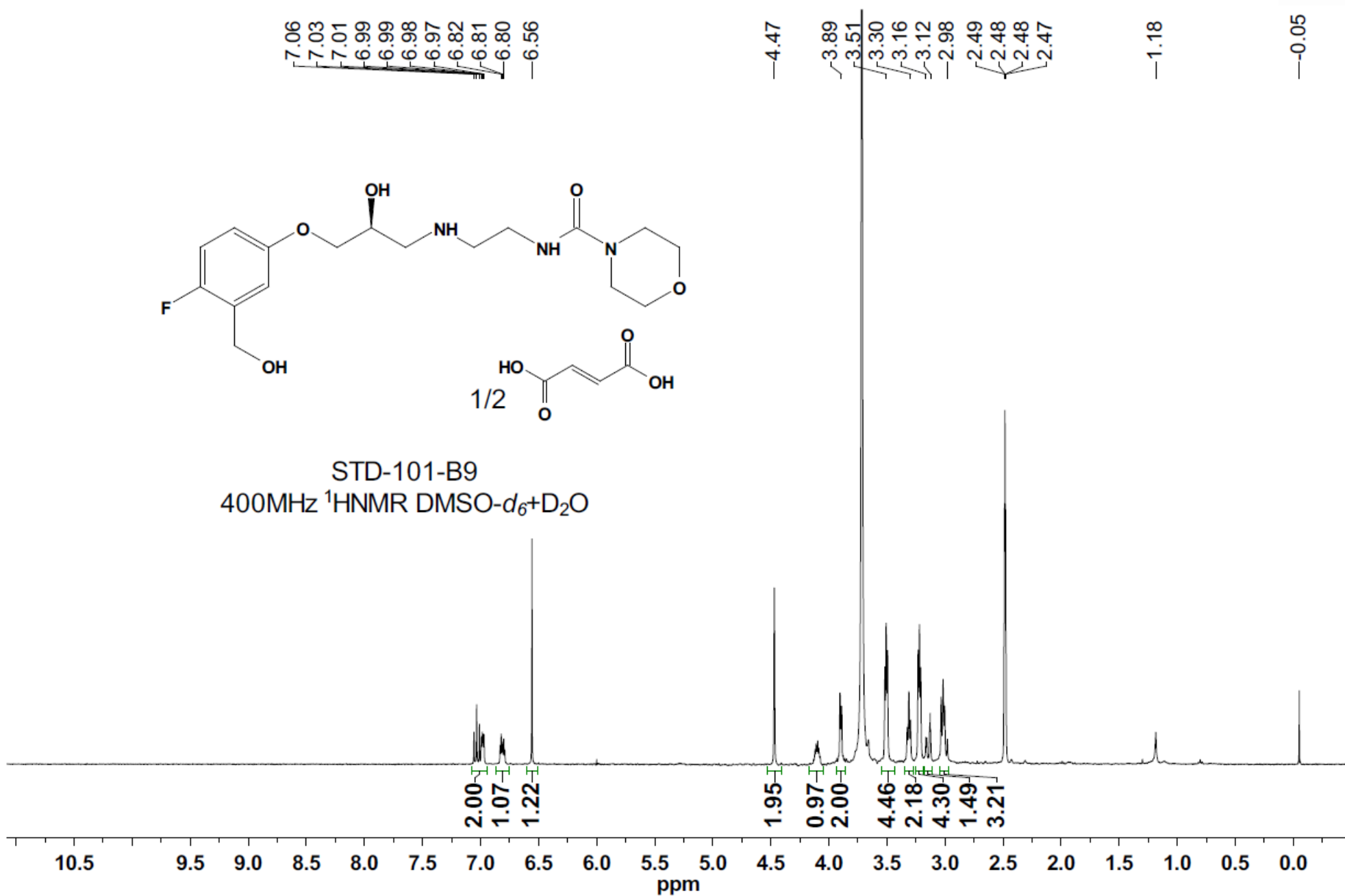
Signal 1: DAD1 A, Sig=220,16 Ref=off

Peak #	RT [min]	Type	Width [min]	Height	Area	Area %
1	1.990	VB	0.098	46.068	5066.942	59.353
2	5.875	BB	0.058	52.609	3369.850	39.474
3	10.279	BV	0.060	0.363	24.326	0.285
4	10.949	BB	0.057	0.167	10.283	0.120
5	11.936	BV	0.070	0.793	65.547	0.768

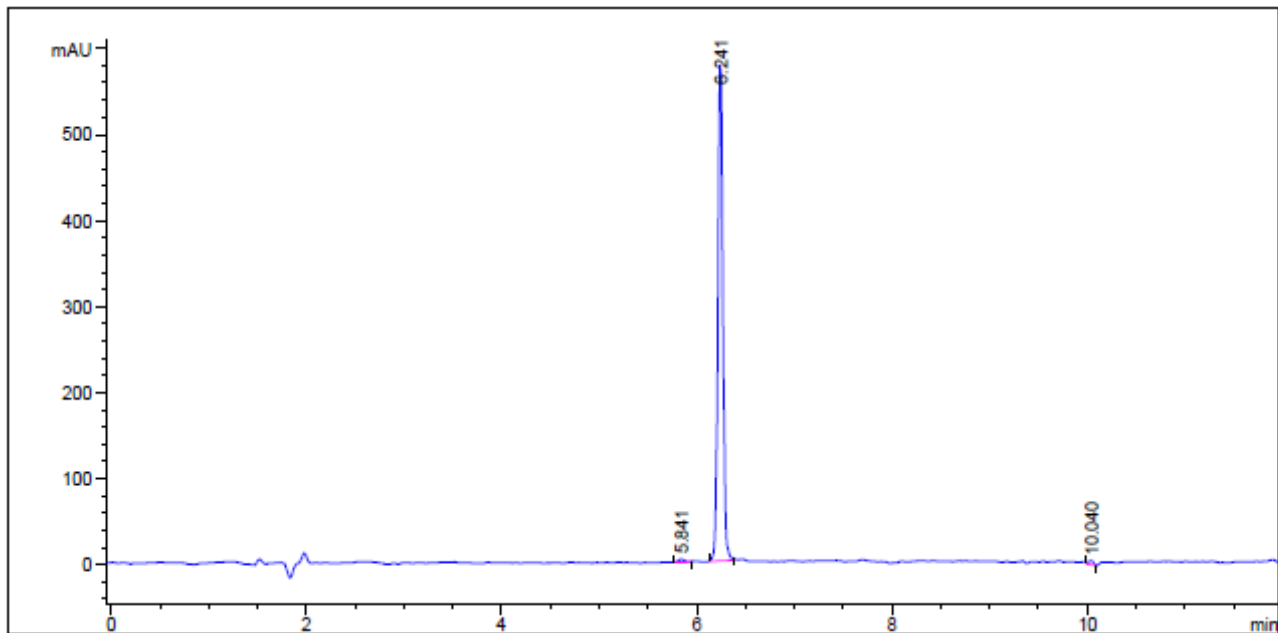
=====



STD-101-B9  
 400MHz  $^1\text{H}$ NMR DMSO- $d_6$ +D $_2$ O



STD-101-E

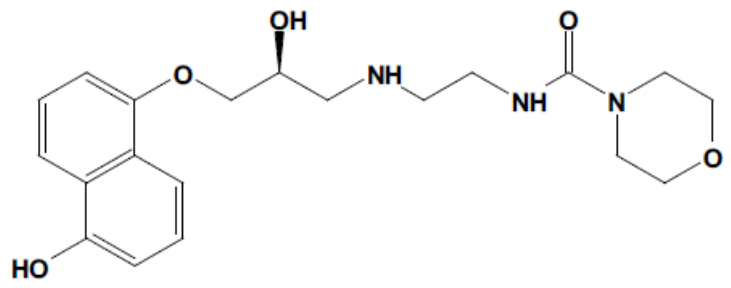


=====  
Area Percent Report  
=====

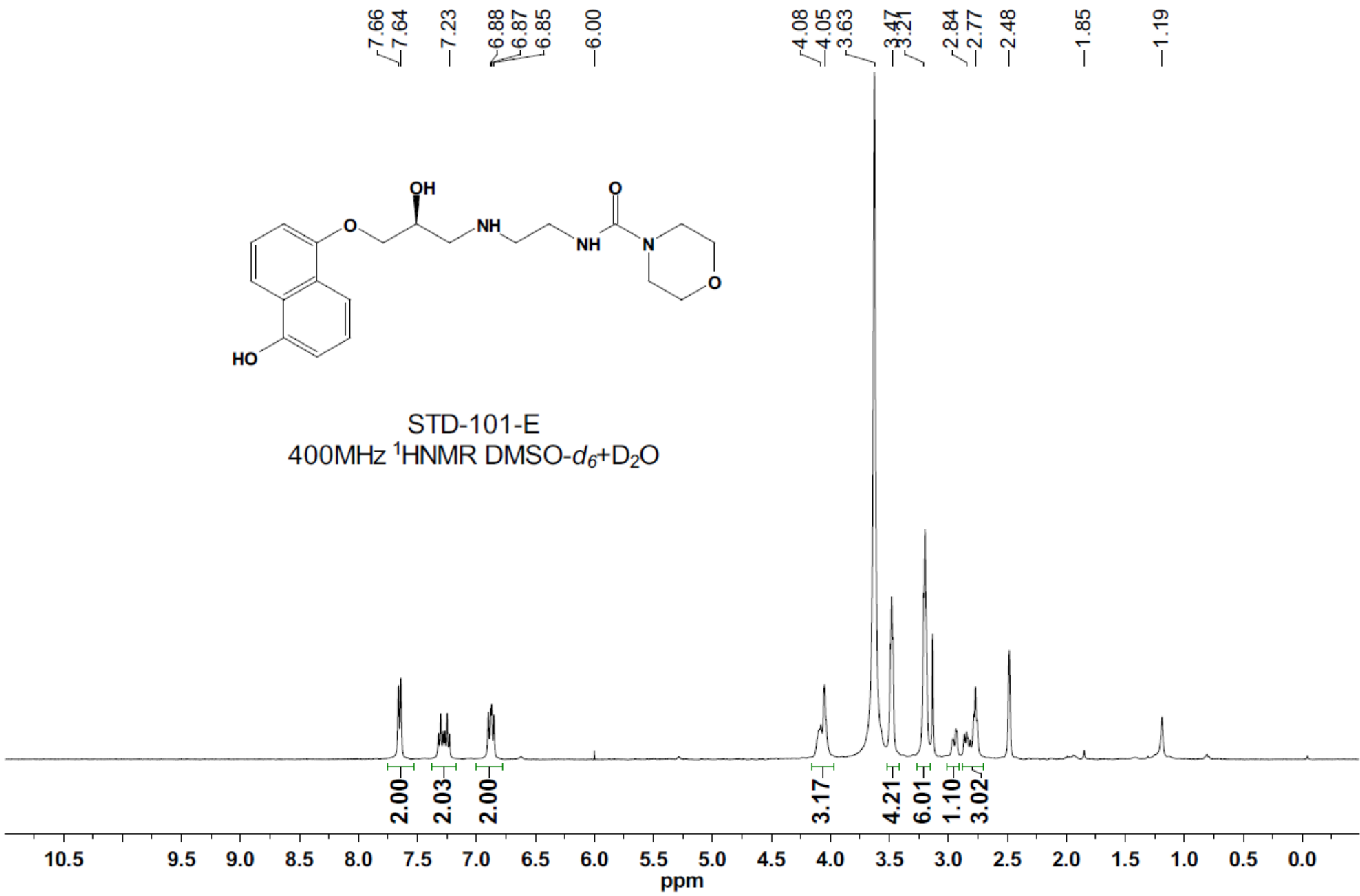
Signal 1: DAD1 A, Sig=220,4 Ref=off  
Signal has been modified after loading from rawdata file!

Peak #	RetTime [min]	Type	Width [min]	Area [mAU*s]	Height [mAU]	Area %
1	5.841	BB	0.0694	16.18991	3.40852	0.7785
2	6.241	BB	0.0553	2045.86768	578.03595	98.3760
3	10.040	BV	0.0566	17.58346	4.81107	0.8455

Totals :                    2079.64105   586.25554  
=====

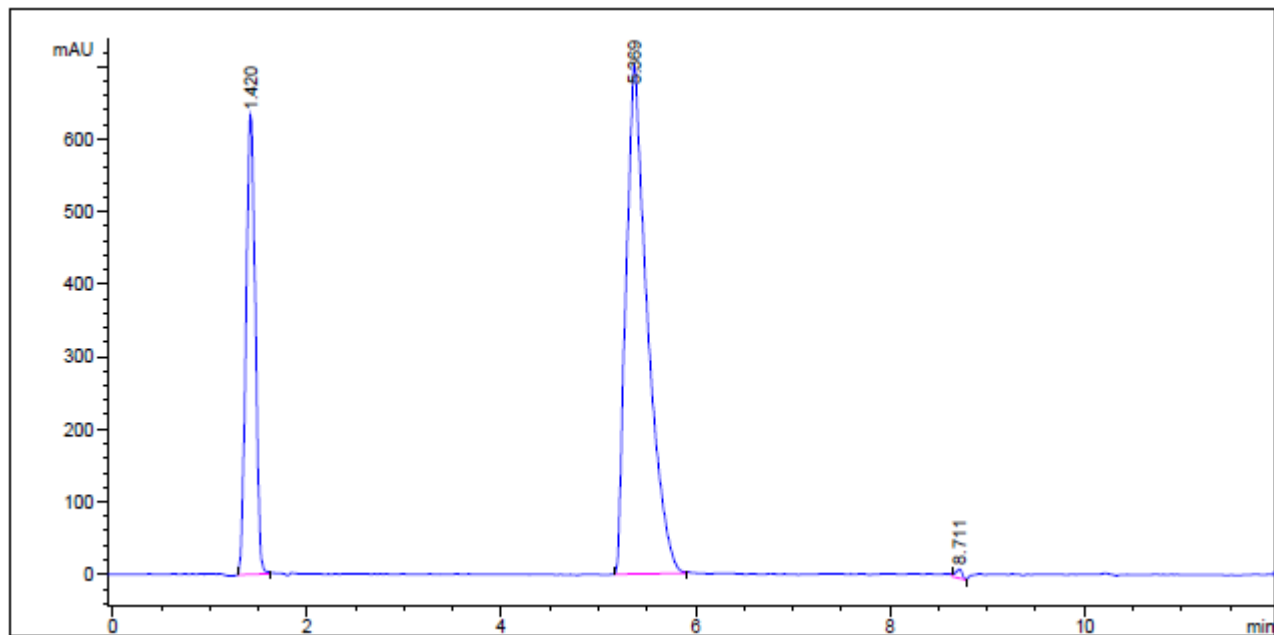


STD-101-E  
400MHz <sup>1</sup>HNMR DMSO-d<sub>6</sub>+D<sub>2</sub>O





STD-101-D1



=====  
 Area Percent Report  
 =====

Signal 1: DAD1 A, Sig=220,4 Ref=off

Signal has been modified after loading from rawdata file!

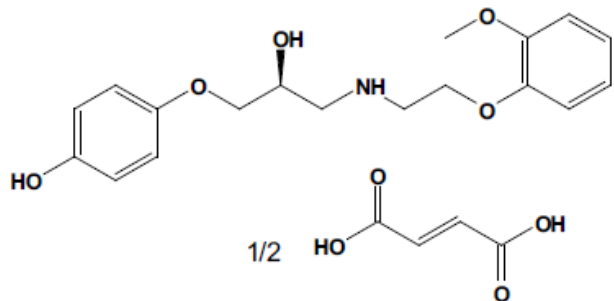
Peak #	RetTime [min]	Type	Width [min]	Area [mAU*s]	Height [mAU]	Area %
1	1.420	BB	0.1055	4196.78760	632.01465	28.0859
2	5.369	BB	0.1996	1.06888e4	702.07568	71.5323
3	8.711	BV	0.0719	57.04675	12.34177	0.3818

Totals :                    1.49427e4  1346.43210

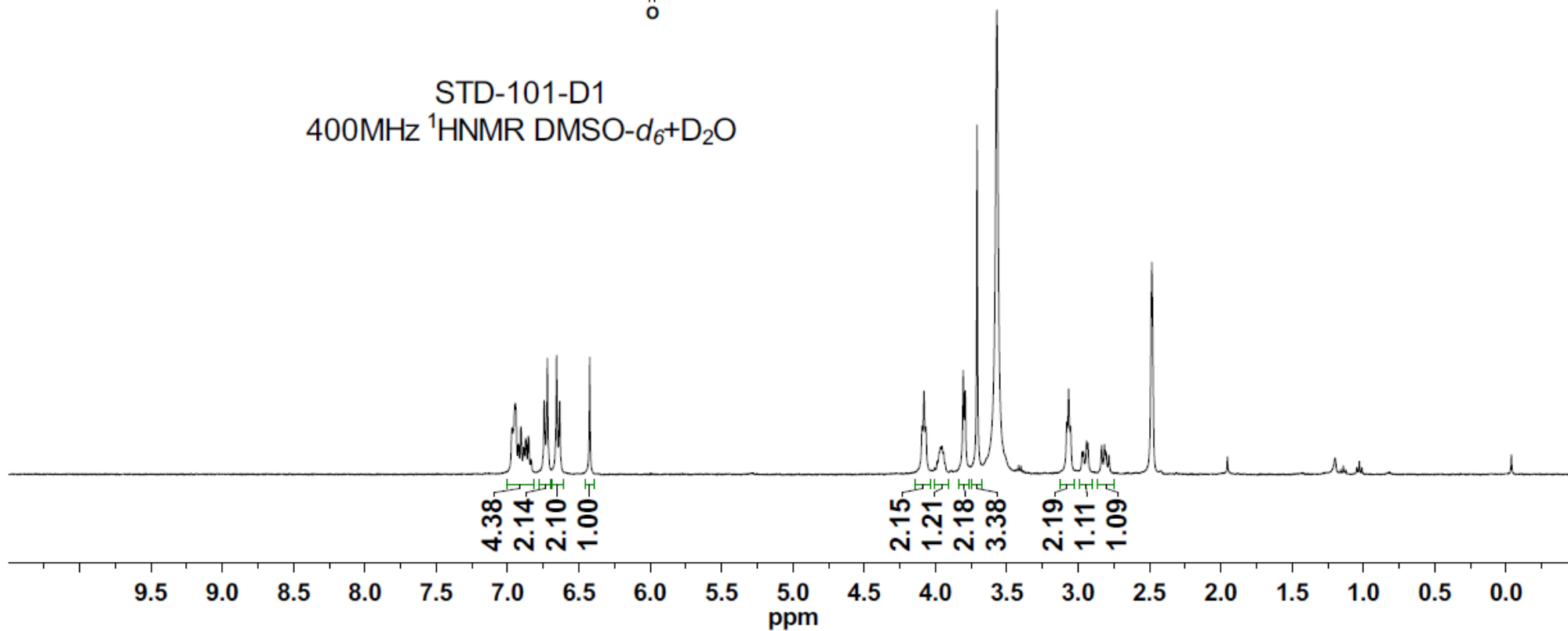
=====

6.97  
6.94  
6.92  
6.91  
6.89  
6.87  
6.85  
6.74  
6.72  
6.66  
6.63  
6.42

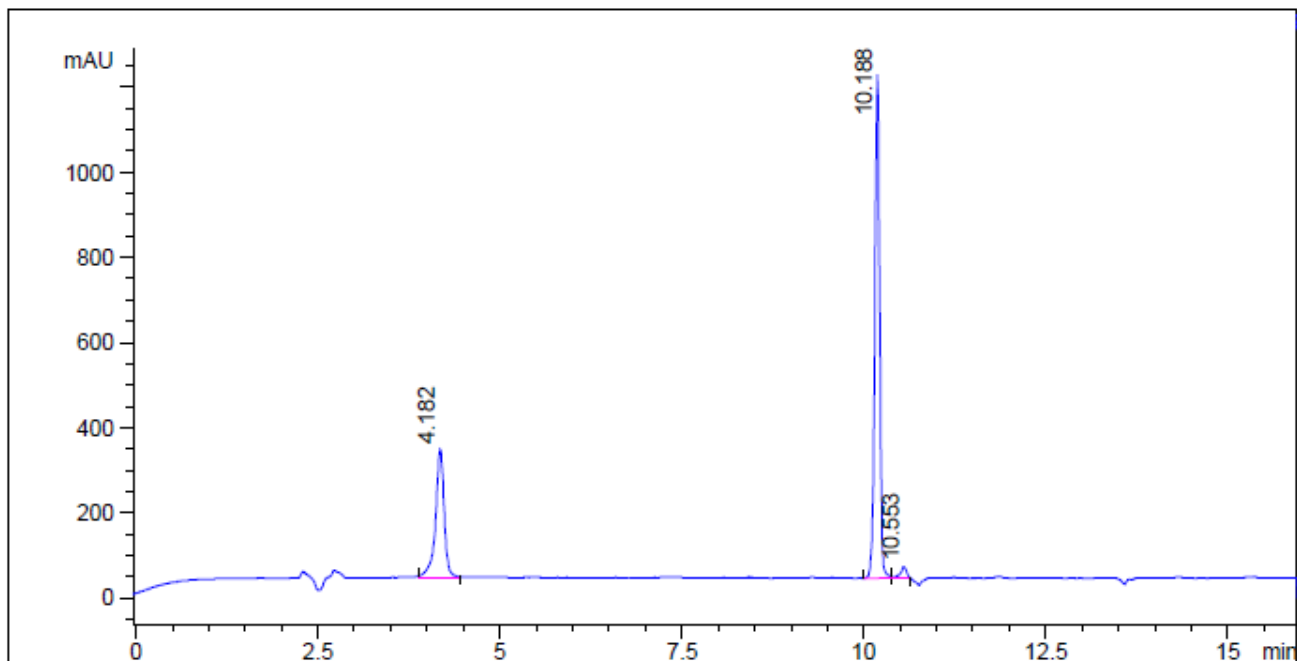
4.09  
4.08  
4.07  
3.96  
3.81  
3.79  
3.71  
3.67  
2.83  
2.78  
2.48  
1.95  
-0.04



STD-101-D1  
400MHz  $^1\text{H}$ NMR  $\text{DMSO-}d_6 + \text{D}_2\text{O}$



STD-101-D2

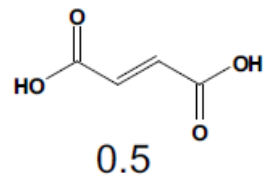
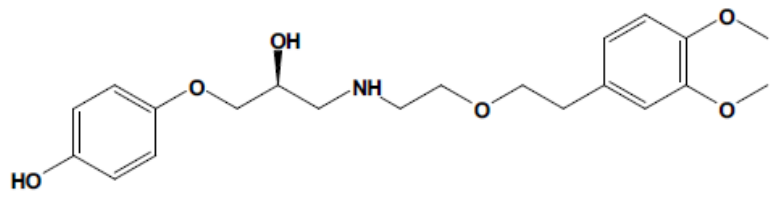


=====  
Area Percent Report  
=====

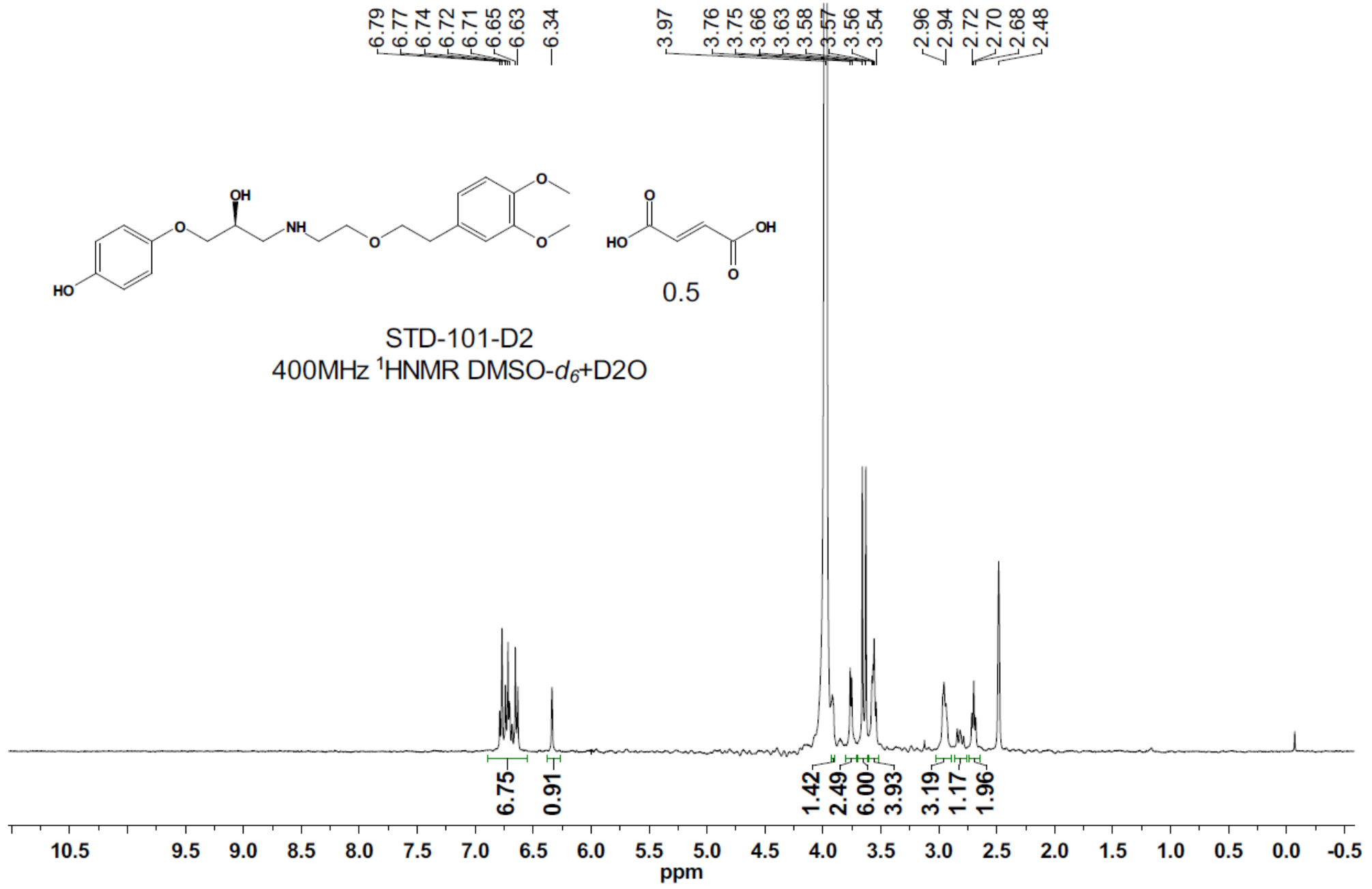
Signal 1: DAD1 A, Sig=220,16 Ref=off

Peak #	RT [min]	Type	Width [min]	Height	Area	Area %
1	4.182	BB	0.125	19.850	2489.435	30.895
2	10.188	MF R	0.076	78.427	5413.867	67.189
3	10.553	FM R	0.099	1.723	154.410	1.916

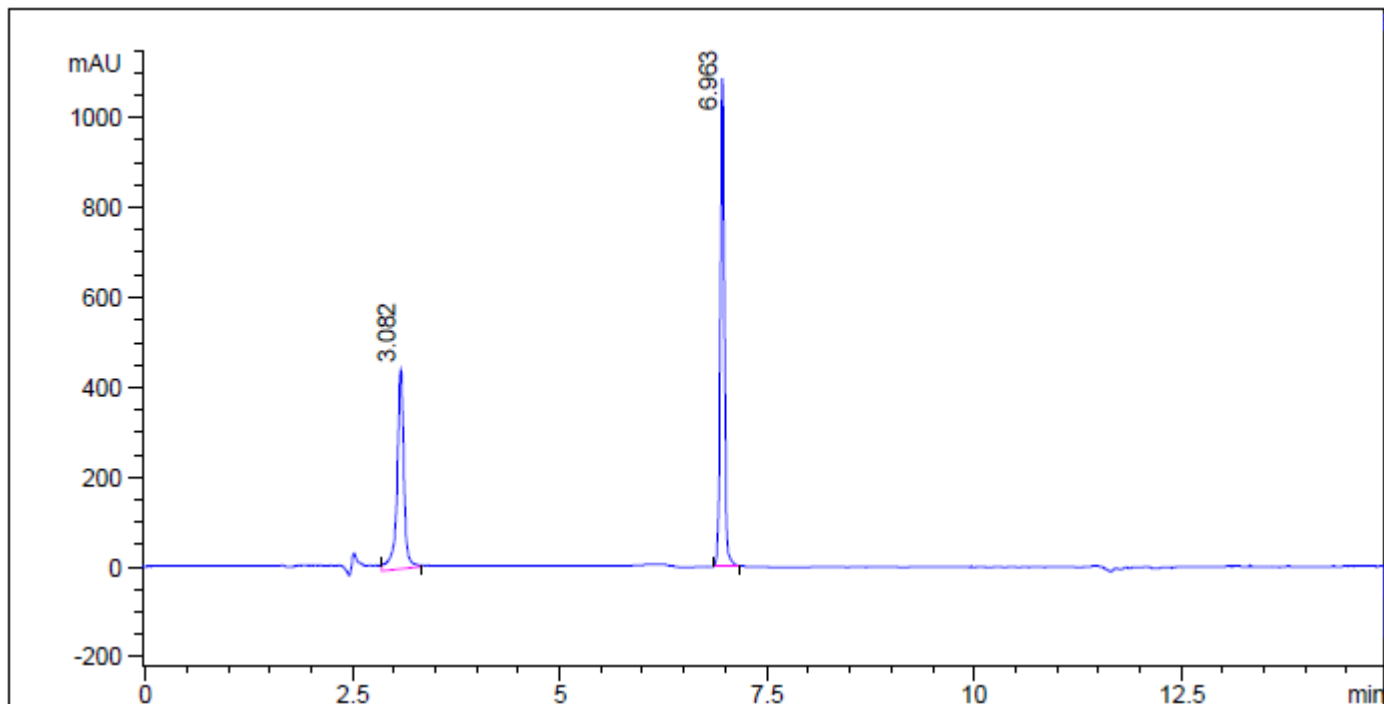
=====



STD-101-D2  
400MHz <sup>1</sup>HNMR DMSO-d<sub>6</sub>+D<sub>2</sub>O



STD-101-D3

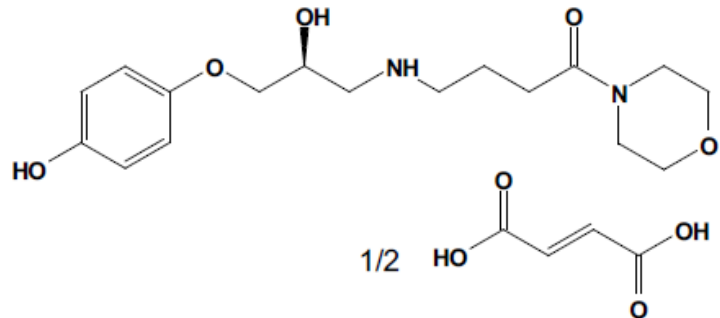


=====  
Area Percent Report  
=====

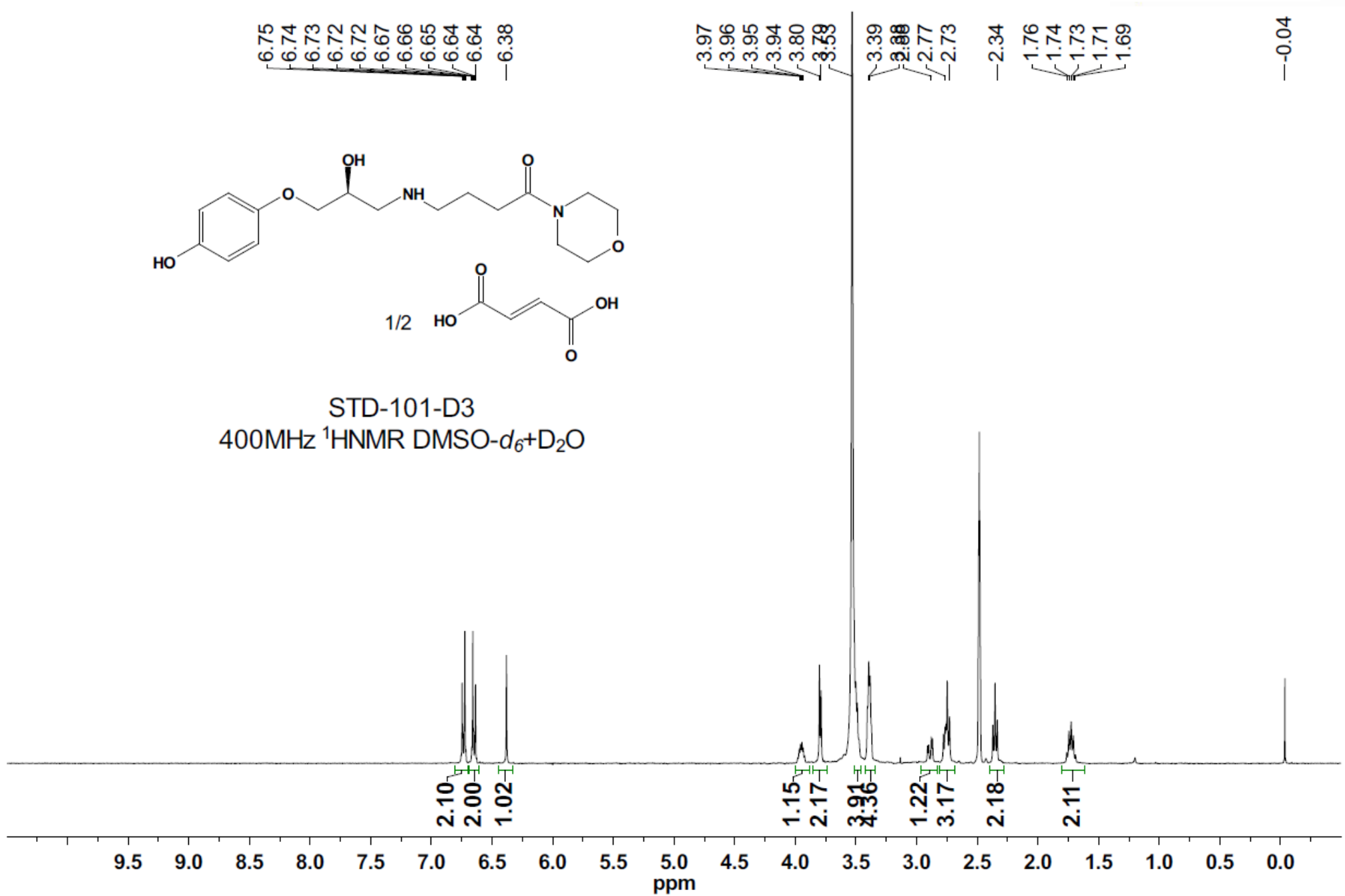
Signal 1: DAD1 A, Sig=220,16 Ref=off

Peak #	RT [min]	Type	Width [min]	Height	Area	Area %
1	3.082	BB	0.086	28.926	2594.402	40.346
2	6.963	BB	0.055	71.074	3835.935	59.654

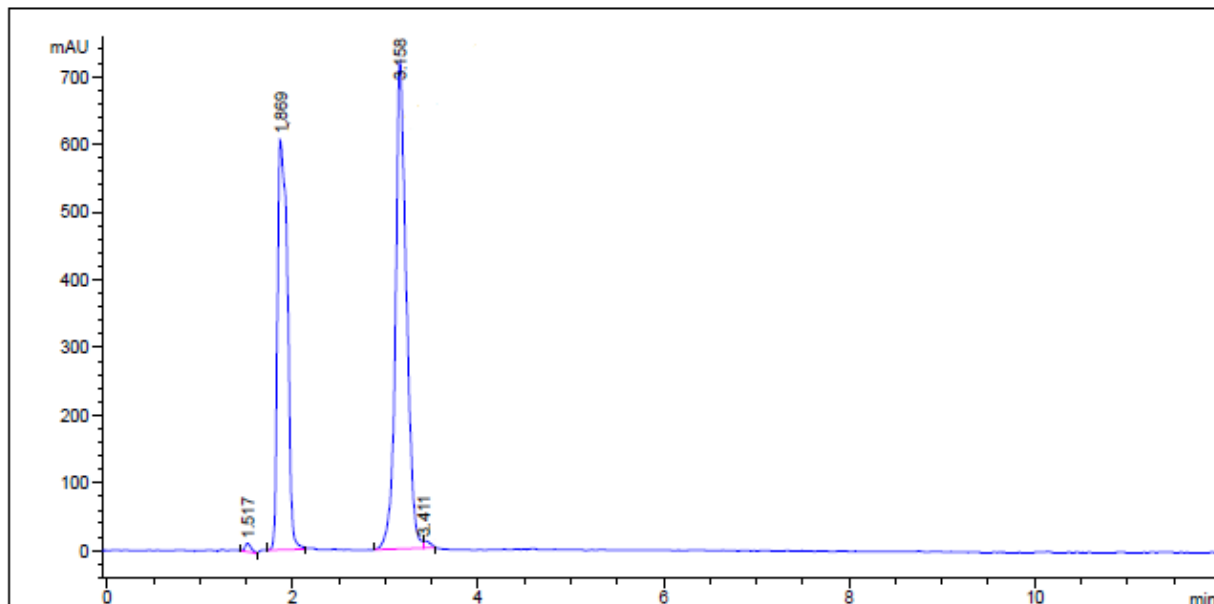
=====  
=====



STD-101-D3  
400MHz <sup>1</sup>HNMR DMSO-d<sub>6</sub>+D<sub>2</sub>O



STD-101-D4

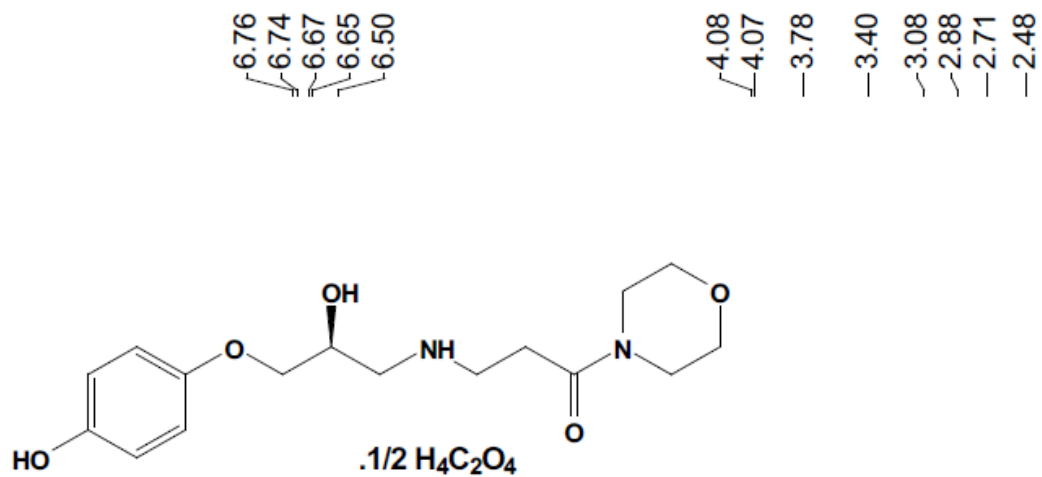


=====  
Area Percent Report  
=====

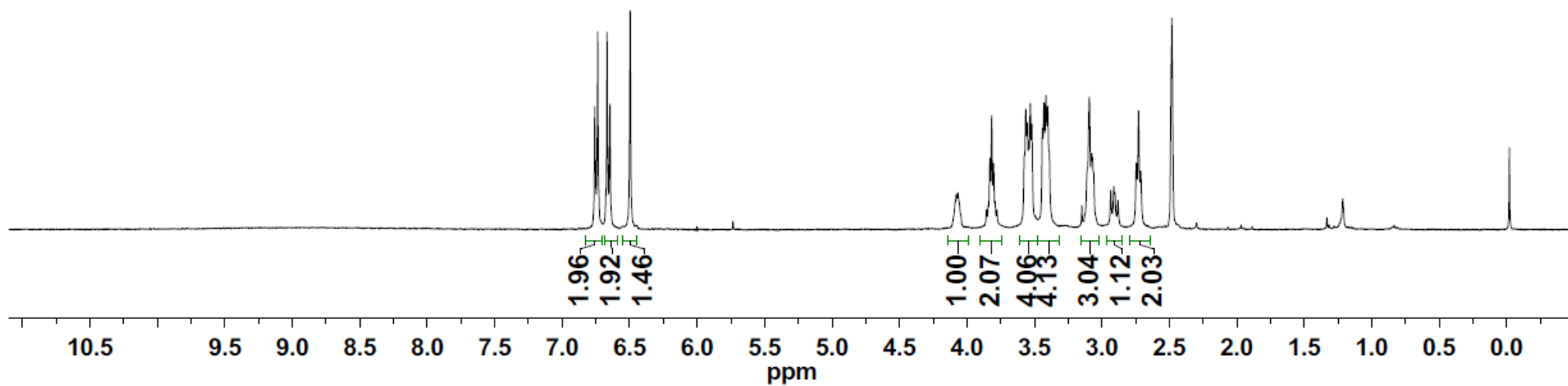
Signal 1: DAD1 A, Sig=220,4 Ref=off  
Signal has been modified after loading from rawdata file!

Peak #	RetTime [min]	Type	Width [min]	Area [mAU*s]	Height [mAU]	Area %
1	1.517	BV	0.0678	55.64667	12.53394	0.5295
2	1.869	MM	0.1237	4505.24902	607.06256	42.8670
3	3.158	MF	0.1366	5901.18799	719.83838	56.1492
4	3.411	FM	0.0794	47.75102	10.02919	0.4543

Totals :                   1.05098e4 1349.46407  
=====

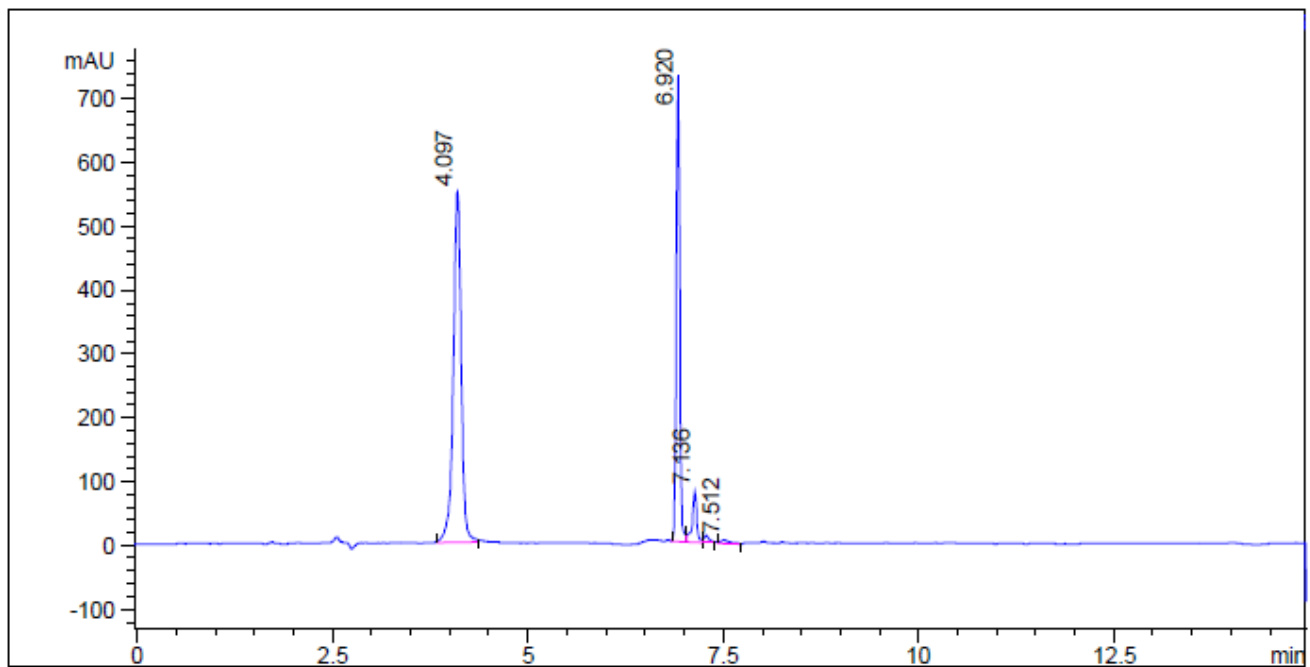


STD-103-D4  
400MHz  $^1\text{H}$ NMR DMSO- $d_6$





STD-101-D5

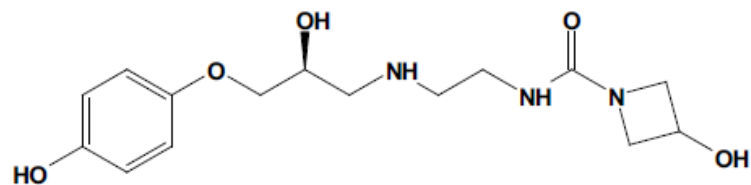


=====  
Area Percent Report  
=====

Signal 1: DAD1 A, Sig=220,16 Ref=off

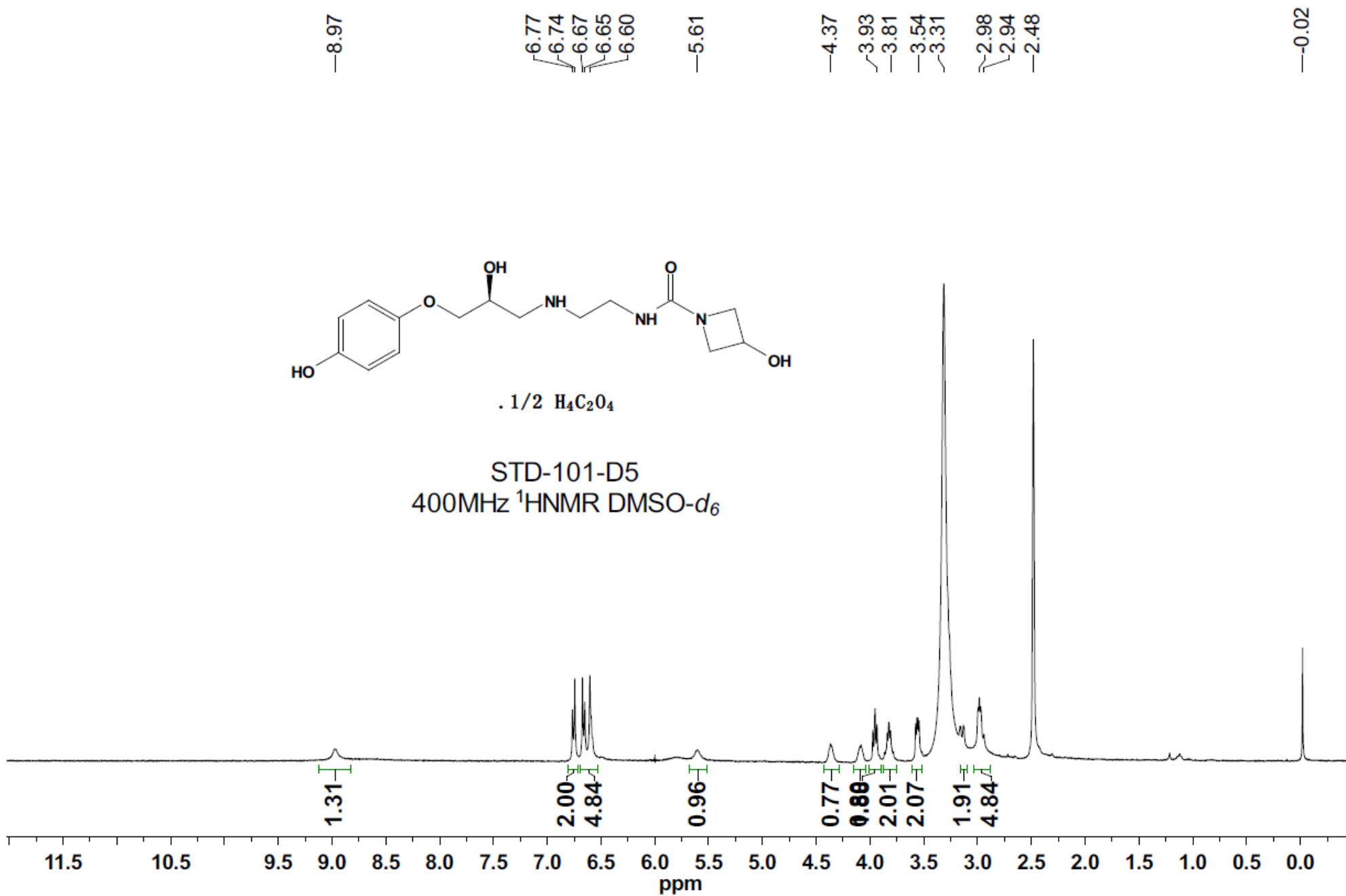
Peak #	RT [min]	Type	Width [min]	Height	Area	Area %
1	4.097	BB	0.109	39.793	3890.943	58.817
2	6.920	BV	0.051	53.120	2302.392	34.804
3	7.136	VB	0.059	5.819	321.795	4.864
4	7.283	BB	0.066	0.864	55.078	0.833
5	7.512	BB	0.108	0.405	45.119	0.682

=====

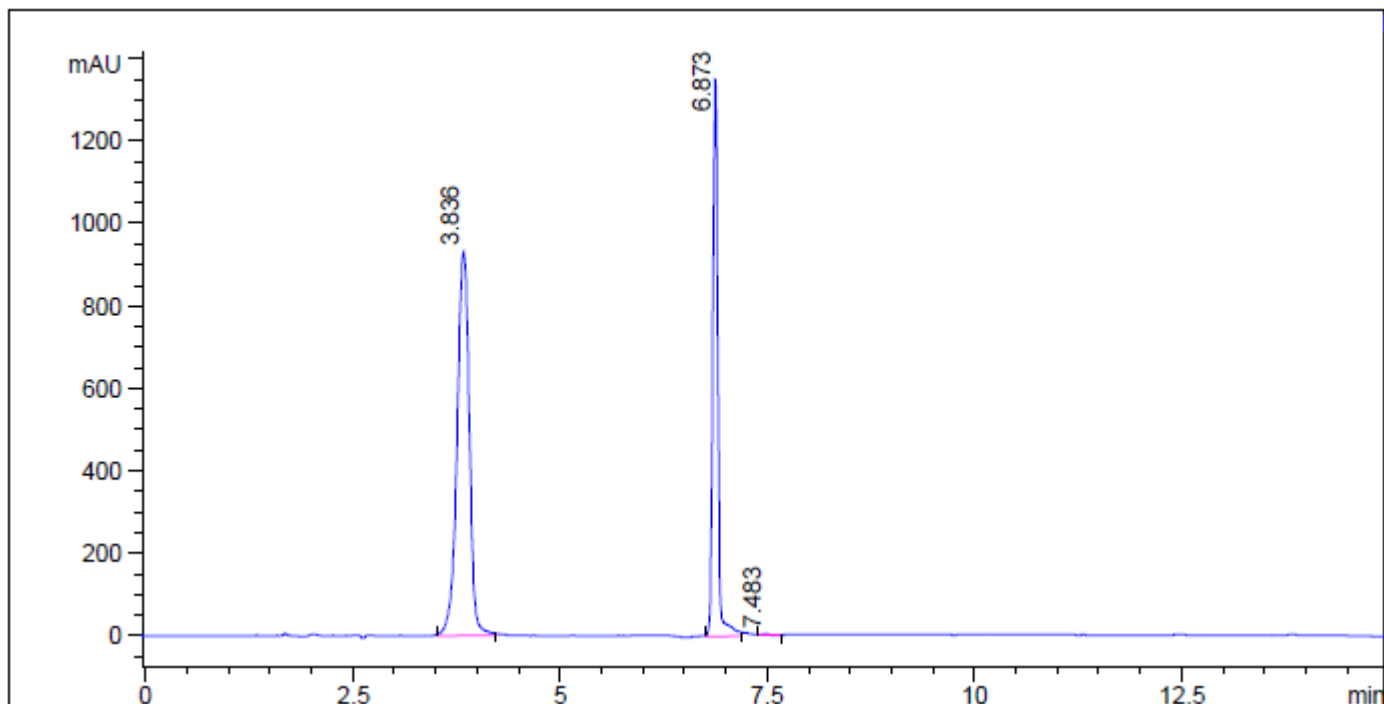


. 1/2 H<sub>4</sub>C<sub>2</sub>O<sub>4</sub>

STD-101-D5  
400MHz <sup>1</sup>HNMR DMSO-*d*<sub>6</sub>



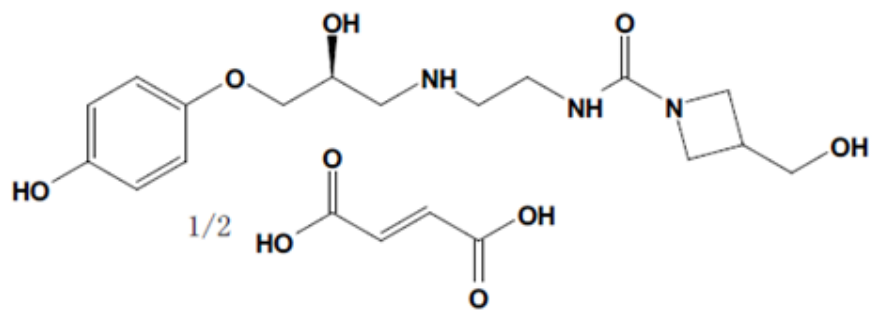
STD-101-D6



=====  
Area Percent Report  
=====

Signal 1: DAD1 A, Sig=220,16 Ref=off

Peak #	RT [min]	Type	Width [min]	Height	Area	Area %
1	3.836	BB	0.162	40.577	9582.307	62.208
2	6.873	BB	0.068	59.261	5796.280	37.629
3	7.483	BB	0.093	0.162	25.003	0.162



STD-101-D6  
400MHz <sup>1</sup>HNMR DMSO-*d*<sub>6</sub>

