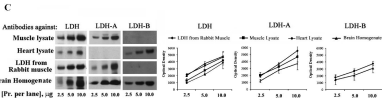
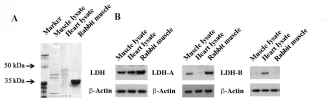
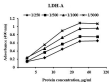
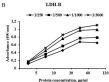
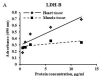


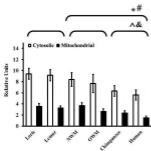
10 Ma



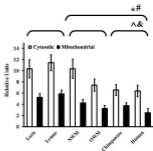


A

LDH-A (Neocortex)

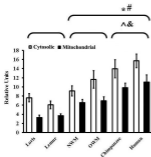


LDH-A (Striatum)

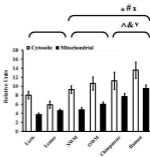


B

LDH-B (Neocortex)



LDH-B (Striatum)



Cytosolic fraction



Mitochondrial fraction



Table A.1 Characteristics of primate species, brain regions examined, and methods used

| SPECIES | AGE (years) | SEX | Brain Regions | Experimental methods | |
|---|-------------|-----|---------------|----------------------|-------|
| | | | | Western Blot | ELISA |
| Blue-eyed black lemur (<i>Eulemur flavifrons</i>) | 18.1 | F | Neocortex | Yes | No |
| | | | Striatum | No | No |
| Ring-tailed lemur (<i>Lemur catta</i>) | 15 | F | Neocortex | Yes | No |
| | | | Striatum | No | Yes |
| Ring-tailed lemur (<i>Lemur catta</i>) | 24 | F | Neocortex | No | Yes |
| | | | Striatum | Yes | Yes |
| Red slender loris (<i>Loris tardigradus</i>) | 18.4 | M | Neocortex | Yes | No |
| | | | Striatum | No | No |
| Pygmy slow loris (<i>Nycticebus pygmaeus</i>) | 14 | M | Neocortex | Yes | No |
| | | | Striatum | No | No |
| Pygmy slow loris (<i>Nycticebus pygmaeus</i>) | 10 | M | Neocortex | Yes | Yes |
| | | | Striatum | Yes | Yes |
| White fronted spider monkey (<i>Ateles belzebuth</i>) | 36 | F | Neocortex | Yes | No |
| | | | Striatum | No | No |
| White-faced saki (<i>Pithecia pithecia</i>) | 10 | F | Neocortex | Yes | Yes |
| | | | Striatum | Yes | Yes |
| Squirrel monkey (<i>Saimiri sciureus</i>) | 30 | F | Neocortex | Yes | Yes |
| | | | Striatum | Yes | Yes |
| Olive baboon (<i>Papio anubis</i>) | 6.5 | F | Neocortex | Yes | No |
| | | | Striatum | No | No |
| Rhesus macaque (<i>Macaca mulatta</i>) | 23.3 | F | Neocortex | Yes | Yes |
| | | | Striatum | Yes | Yes |
| Rhesus macaque (<i>Macaca mulatta</i>) | 24.5 | M | Neocortex | Yes | Yes |
| | | | Striatum | Yes | Yes |
| Rhesus macaque (<i>Macaca mulatta</i>) | 13.2 | M | Neocortex | Yes | Yes |
| | | | Striatum | Yes | Yes |
| Rhesus macaque (<i>Macaca mulatta</i>) | 15.67 | F | Neocortex | Yes | Yes |

| | | | | | |
|--|------|---|-----------|-----|-----|
| | | | Striatum | Yes | Yes |
| Pigtailed macaque (<i>Macaca nemestrina</i>) | 15.6 | M | Neocortex | Yes | No |
| | | | Striatum | No | No |
| Chimpanzee (<i>Pan troglodytes</i>) | 31.2 | M | Neocortex | Yes | No |
| | | | Striatum | No | No |
| Chimpanzee (<i>Pan troglodytes</i>) | 22.4 | F | Neocortex | Yes | Yes |
| | | | Striatum | Yes | Yes |
| Chimpanzee (<i>Pan troglodytes</i>) | 26.4 | M | Neocortex | Yes | Yes |
| | | | Striatum | Yes | Yes |
| Chimpanzee (<i>Pan troglodytes</i>) | 22.9 | M | Neocortex | Yes | Yes |
| | | | Striatum | Yes | Yes |
| Chimpanzee (<i>Pan troglodytes</i>) | 31.2 | M | Neocortex | Yes | Yes |
| | | | Striatum | No | No |
| Human (<i>Homo sapiens</i>) | 73 | M | Neocortex | Yes | No |
| | | | Striatum | No | No |
| Human (<i>Homo sapiens</i>) | 78 | F | Neocortex | Yes | No |
| | | | Striatum | No | No |
| Human (<i>Homo sapiens</i>) | 46.4 | F | Neocortex | Yes | Yes |
| | | | Striatum | Yes | Yes |
| Human (<i>Homo sapiens</i>) | 51.2 | M | Neocortex | Yes | Yes |
| | | | Striatum | Yes | Yes |
| Human (<i>Homo sapiens</i>) | 49.4 | M | Neocortex | Yes | Yes |
| | | | Striatum | Yes | Yes |