

***In-vivo* loss of carbapenem resistance by extensively drug-resistant
Klebsiella pneumoniae during treatment *via* porin expression modification**

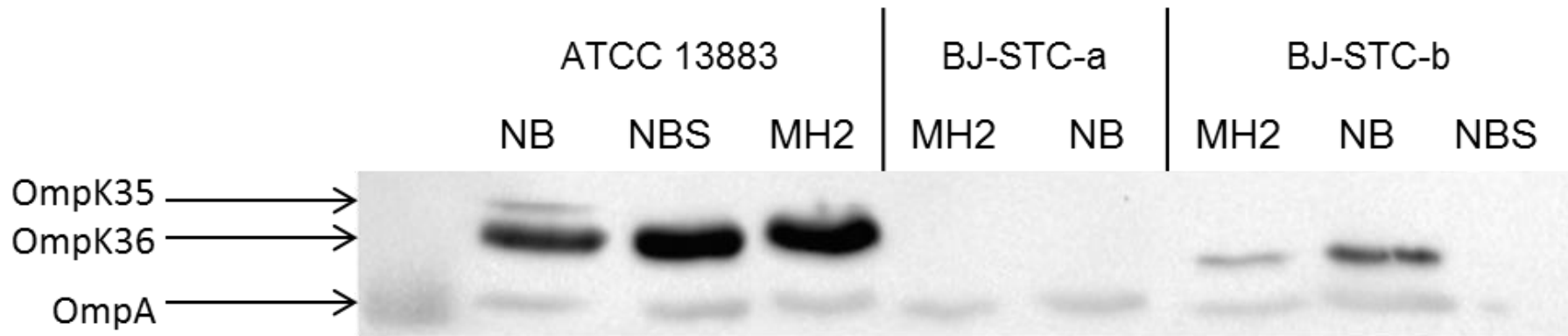
Suzanne Bialek-Davenet, Noémie Mayer, Julia Vergalli, Marion Duprilot, Sylvain Brisse,
Jean-Marie Pagès, Marie-Hélène Nicolas-Chanoine

Supplementary table (Table S1). List of primers used in this study

Assay and target region	Primer	Sequence (5'-3')	Reference
Sequencing			
<i>ompK35</i>	ompK35F	CAGACACCAAACCTCTCATCA	This work
	ompK35R	TCAGGTTAACGGGAGAATAA	
	ompK35sqF	GCGTCGATCAGAAAGCT	
	ompK35sqR	GCTTCGGCTTTGTCGCCA	
<i>ompK36</i>	ompK36F	TTGCAGCACAAATGAAATAGC	This work
	ompK36R	CAAGAGTATACCAGCGAGGT	
	ompK36sqF	CGACGTTCTGCCGGAATT	
	ompK36sqR	AGAGTTACGGTAGGTTGC	
Inter <i>rarA</i> and <i>oxqA</i>	<i>rarA</i> +intF	ACGGACCGTTCACTATGTCG	37
	<i>rarA</i> +intR	GACGAGCAGAAAGGAGAGCA	
Sequencing and cloning			
<i>oqxR</i>	oqxRF	TTCTGACGCCGGTGTTTTA	37
	oqxRR	CTGCGGTGCCAAAAGAACA	
<i>pstS</i>	pstSF	CGGCGGTAGATGACAAACGA	This work
	pstSR	CCCCGCCATCTTCGTCAAAA	
	pstSsqF	AAAAATGGGATGACGAAGCG	
	pstSsqR	GGCGCGGCGGACCACGGCGA	
<i>phoU</i>	phoUF	CGTGA CTACAACATGCAGC	This work
	phoUR	GCCGCGGGGTAAAACATATC	
<i>phoB</i>	phoBF	CGTCGTGCTTCAA AATACCC	This work
	phoBR	TTCCATGACAGCCGTTCCAG	
<i>phoR</i>	phoRF	TGGCCATGATCGTATGGTGC	This work
	phoRR	GCAGCGCACGCTCATTAAATA	
	phoRsqF	CGGAACTTTTTTCGCCAACGT	
	phoRsqR	CTGCTCCTGCATCATCTCCA	
RT-PCR			
<i>acrB</i>	acrBF	CGATAACCTGATGTACATGTCC	Bratu et al.
	acrBR	CCGACAACCATCAGGAAGCT	
<i>ramA</i>	ramAF	ATCGTCGAGTGGATTGATGA	32
	ramAR	AGATGCCATTTCAATACCC	
<i>oqxB</i>	oqxB1806F	GAGCGAGATCGGGATGAATAC	37
	oqxB1890R	CGGCGTGTGGTGA ACTG	
<i>rarA</i>	Kp02968F	TGGATCGACAACCATCTTGA	23
	Kp02968R	AAGGACTGCTGGGAGTCAAA	
<i>ompK35</i>	ompK35RTF	TCCCTGCCCTGCTGGTAG	Bratu et al.
	ompK35RTR	CTGGTGTCCG CATTGGTGG	

<i>ompK36</i>	ompK36RTF	GCGACCAGACCTACATGCGT	Bratu et al.
	ompK36RTR	AGTCGAAAGAGCCCGCGTC	
<i>phoE</i>	phoEF	TGATGGGCTTTGTGGCTTC	Bratu et al.
	phoER	CTTGCTGTCATAGTCGCTG	
<i>rpoB</i>	rpoBF	AAGGCGAATCCAGCTTGTTTCAGC	Bratu et al.
	rpoBR	TGACGTTGCATGTTTCGCACCCATCA	

Bratu, S., Landman, D., George, A., Salvani, J. & Quale, J. Correlation of the expression of *acrB* and the regulatory genes *marA*, *soxS* and *ramA* with antimicrobial resistance in clinical isolates of *Klebsiella pneumoniae* endemic to New York City. J Antimicrob Chemother 64, 278-283 (2009).



Supplementary figure (Figure S1). Immunodetection of porins and OmpA. After SDS-PAGE separation of denatured samples, the detection was performed with the polyclonal antibodies directed against denatured OmpF (OmpK35 in *Klebsiella pneumoniae*) porin and also against denatured OmpC (OmpK36 in *K. pneumoniae*) porin due to cross-recognition, and OmpA. The tested strains, ATCC13883, BJ-STC-a and BJ-STC-b, were grown in Mueller Hinton II (MH2), nutrient broth (NB) and nutrient broth containing sorbitol (NBS) media. A mix of anti-OmpA and anti-OmpF was used on the same nitrocellulose sheet to detect porins and OmpA.