

**Table S1. Baseline characteristics across creatinine tertiles**

Creatinine tertiles	1 [0.9-1.2] (n=559)	1.4 [1.3-1.5] (n=445)	2 [1.8-2.4] (n=443)	P-lin	
<b>Demographics</b>					
Sex (% Male)	53.7 (300)	67.2 (299)	80.1 (355)	<0.001	
Age (years)	69.2±12	70.9±11	71.1±10.3	0.008	
BMI (kg/m2)	28.2±6.5	28.9±5.8	29.1±5.3	0.019	
LVEF (% (n))	33.7±13.1	32.9±13.5	30.9±12	0.021	
Systolic Blood Pressure (mmHg)	125.5±17.1	125.2±17.4	124.1±18	0.187	
Diastolic Blood Pressure (mmHg)	75.2±11.4	75.1±11.7	72.8±11.6	0.001	
Heart Rate (beats/min)	83±16.1	81.3±15.9	78.4±15.3	<0.001	
Rolofylline administration (% (n))	63.7 (356)	68.5 (305)	69.5 (308)	0.045	
<b>Clinical Profile</b>					
Orthopnea (% (n))	96.2 (532)	96.8 (428)	95.7 (422)	0.711	
Rales (% (n))	66 (369)	64.7 (288)	59.3 (262)	0.031	
Edema (% (n))	68 (380)	71 (316)	69.1 (306)	0.663	
Jugular venous pressure (% (n))	39.7 (200)	43.6 (170)	44.1 (173)	0.168	
<b>Medical History</b>					
Hypertension (% (n))	78.4 (438)	81.1 (361)	79.7 (353)	0.563	
Diabetes Mellitus (% (n))	38.6 (216)	43.8 (195)	53.4 (236)	<0.001	
Hypercholesterolemia (% (n))	36.7 (205)	50.2 (223)	54.9 (243)	<0.001	
Smoking (% (n))	15.9 (89)	18.5 (82)	20.4 (90)	0.070	
Ischemic Heart Disease (% (n))	67.9 (378)	67.6 (301)	75.6 (335)	0.010	
Myocardial Infarction (% (n))	46 (256)	46.6 (207)	57.6 (255)	<0.001	
PCI (% (n))	19.7 (109)	20.8 (92)	28.4 (124)	0.002	
CABG (% (n))	11.9 (66)	20.8 (92)	29.2 (128)	<0.001	
Peripheral Vascular Disease (% (n))	8.6 (48)	11.7 (52)	13.8 (61)	0.009	
Atrial Fibrillation (% (n))	53.9 (300)	59.3 (262)	53.5 (237)	0.992	
NYHA Class				<0.001	
	I-II	15.7 (88)	16.2 (72)	17.4 (77)	
	III	42 (235)	47.6 (212)	50.6 (224)	
	IV	37.6 (210)	30.3 (135)	27.1 (120)	
ICD therapy (% (n))	7.5 (42)	14.6 (65)	20.1 (89)	<0.001	
CRT therapy (% (n))	4.8 (27)	10.6 (47)	12.2 (54)	<0.001	
Stroke (% (n))	7.2 (40)	11.2 (50)	11.5 (51)	0.017	
COPD (% (n))	19 (106)	17.8 (79)	22.4 (99)	0.201	
<b>Prior Medication Use</b>					
ACE inhibitors or ARB (% (n))	76.2 (426)	77.5 (345)	72 (319)	0.149	
Beta blockers (% (n))	69.8 (390)	76.2 (339)	78.3 (347)	0.002	
MRAs (% (n))	47.8 (267)	48.3 (215)	45.1 (200)	0.433	
Calcium Antagonists (% (n))	11.3 (63)	13.3 (59)	16.5 (73)	0.017	
Nitrates (% (n))	23.3 (130)	26.5 (118)	32.7 (145)	0.001	
Digoxin (% (n))	36.5 (204)	30.8 (137)	23.3 (103)	<0.001	
<b>Laboratory Values</b>					
eGFR (mL/min/1.73m2)	68 [61-78]	48.6 [42-55]	32 [27-39]	<0.001	
NGAL (ng/ml)	57 [41-84]	81 [58-127]	137 [95-204]	<0.001	
Blood Urea Nitrogen (mg/dL)	22 [18-26]	30 [25-38]	45 [36-59]	<0.001	
Sodium (mmol/L)	140 [138-143]	140 [137-143]	140 [137-142]	<0.001	
Potassium (mmol/L)	4.2 [3.9-4.6]	4.3 [3.9-4.6]	4.4 [3.9-4.8]	<0.001	
Hemoglobin (g/dL)	13.1±1.9	12.8±1.9	12.3±2	<0.001	
Anemia (% (n))	28.1 (139)	40.6 (162)	58.5 (224)	<0.001	
Total Cholesterol (mmol/L)	155±42	146±46	143±45	<0.001	
Triglycerides (mmol/L)	99±52	98±53	104±60	0.105	
BNP (mg/dL)	1172 [775-2232]	1302 [916-2152]	1362 [811-2773]	0.180	

Abbreviations: BMI: Body Mass Index; LVEF: Left Ventricular Ejection Fraction; PCI: Percutaneous Coronary Intervention; CABG: Coronary Artery Bypass Graft NYHA: New York Heart Association; ICD: Internal Cardiac Defibrillator; CRT: Cardiac Resynchronization Therapy; COPD: chronic obstructive pulmonary disease; ACE: Angiotensin Converting Enzyme ; ARB: Aldosterone Receptor Blocker; MRA: Mineralocorticoid Receptor Antagonist; eGFR: estimated Glomerular Filtration Rate; BNP: Brain Natriuretic Peptide. Categorical variables are presented as: % (N).

P value: Non-parametric trend tests for categorical variables, and univariable generalized linear models with polynomial contrasts for continuous variables were used to examine trends across categories.

**Table S2. Baseline characteristics across NGAL tertiles**

NGAL Tertiles	44 [35-53] (n=478)	83 [72-94] (n=477)	166 [132-223] (n=492)	P-lin	
<b>Demographics</b>					
Sex (% Male)	64.6 (309)	66.9 (319)	66.3 (326)	0.599	
Age (years)	67.5±12	70.7±11.1	72.7±9.9	<0.001	
BMI (kg/m <sup>2</sup> )	28.5±6.6	28.6±5.8	29±5.5	0.238	
LVEF (% (n))	31.9±12.3	31.7±12.9	33.9±13.4	0.101	
Systolic Blood Pressure (mmHg)	124.9±17	124.4±17.5	125.6±17.8	0.521	
Diastolic Blood Pressure (mmHg)	75.8±11.3	74.6±11.7	73±11.7	<0.001	
Heart Rate (beats/min)	83.8±16.4	80.8±16.1	78.7±14.9	<0.001	
Rolofylline administration (% (n))	68 (325)	65.4 (312)	67.5 (332)	0.871	
<b>Clinical Profile</b>					
Orthopnea (% (n))	96.2 (456)	96 (453)	96.5 (473)	0.786	
Rales (% (n))	67.2 (321)	60.7 (289)	62.8 (309)	0.163	
Edema (% (n))	69 (330)	70 (334)	68.7 (338)	0.906	
Jugular venous pressure (% (n))	43.6 (185)	39.6 (168)	43.4 (190)	0.950	
<b>Medical History</b>					
Hypertension (% (n))	77.4 (370)	78.6 (375)	82.7 (407)	0.039	
Diabetes Mellitus (% (n))	35.8 (171)	45.7 (218)	52.5 (258)	<0.001	
Hypercholesterolemia (% (n))	41.2 (197)	45.4 (216)	52.4 (258)	<0.001	
Smoking (% (n))	18.4 (88)	15.8 (75)	20 (98)	0.533	
Ischemic Heart Disease (% (n))	67.3 (321)	69.8 (333)	73.3 (360)	0.040	
Myocardial Infarction (% (n))	47.9 (228)	48.7 (232)	52.5 (258)	0.147	
PCI (% (n))	19 (90)	23.8 (113)	25.2 (122)	0.024	
CABG (% (n))	14.2 (67)	20.1 (95)	25.4 (124)	<0.001	
Peripheral Vascular Disease (% (n))	9.2 (44)	10.5 (50)	13.7 (67)	0.027	
Atrial Fibrillation (% (n))	54.1 (256)	55.6 (265)	56.5 (278)	0.457	
NYHA Class				0.081	
	I-II	15.3 (73)	15.5 (74)	18.3 (90)	
	III	43.5 (208)	46.8 (223)	48.8 (240)	
	IV	36.2 (173)	33.5 (160)	26.8 (132)	
ICD therapy (% (n))	10.9 (52)	14 (67)	15.7 (77)	0.031	
CRT therapy (% (n))	8.6 (41)	9.2 (44)	8.8 (43)	0.931	
Stroke (% (n))	9.6 (46)	7.5 (36)	12 (59)	0.208	
COPD (% (n))	18.4 (88)	20.5 (98)	20 (98)	0.558	
<b>Prior Medication Use</b>					
ACE inhibitors or ARB (% (n))	77.4 (370)	75.9 (362)	72.8 (358)	0.093	
Beta blockers (% (n))	72.8 (348)	74.4 (355)	75.8 (373)	0.283	
MRAs (% (n))	50.2 (240)	47.4 (226)	43.9 (216)	0.049	
Calcium Antagonists (% (n))	9 (43)	11.9 (57)	19.3 (95)	<0.001	
Nitrates (% (n))	23.8 (114)	26.8 (128)	30.7 (151)	0.017	
Digoxin (% (n))	35.1 (168)	31.2 (149)	25.8 (127)	0.002	
<b>Laboratory Values</b>					
Creatinine (mg/dL)	1.1 [0.9-1.3]	1.4 [1.1-1.7]	1.8 [1.4-2.3]	<0.001	
eGFR (mL/min/1.73m <sup>2</sup> )	64 [52-75]	50 [40-63]	37 [29-46]	<0.001	
Blood Urea Nitrogen (mg/dL)	23 [18-30]	29 [22-38]	40 [30-54]	<0.001	
Sodium (mmol/L)	140 [137-143]	140 [137-143]	140 [137-142]	0.043	
Potassium (mmol/L)	4.2 [3.8-4.5]	4.2 [3.9-4.6]	4.4 [4-4.8]	<0.001	
Hemoglobin (g/dL)	13.4±1.9	12.7±1.9	12.2±1.9	<0.001	
Anemia (% (n))	30.5 (129)	41.3 (173)	51.4 (223)	<0.001	
Total Cholesterol (mmol/L)	153±43	146±47	146±44	0.015	
Triglycerides (mmol/L)	97±51	99±56	105±57	0.015	
BNP (mg/dL)	1265 [794-2276]	1216 [868-2238]	1340 [864-2336]	0.605	

Abbreviations: BMI: Body Mass Index; LVEF: Left Ventricular Ejection Fraction; PCI: Percutaneous Coronary Intervention; CABG: Coronary Artery Bypass Graft NYHA: New York Heart Association; ICD: Internal Cardiac Defibrillator; CRT: Cardiac Resynchronization Therapy; COPD: chronic obstructive pulmonary disease; ACE: Angiotensin Converting Enzyme ; ARB: Aldosterone Receptor Blocker; MRA: Mineralocorticoid Receptor Antagonist; eGFR: estimated Glomerular Filtration Rate; BNP: Brain Natriuretic Peptide. Categorical variables are presented as: % (N).

P value: Non-parametric trend tests for categorical variables, and univariable generalized linear models with polynomial contrasts for continuous variables were used to examine trends across categories.

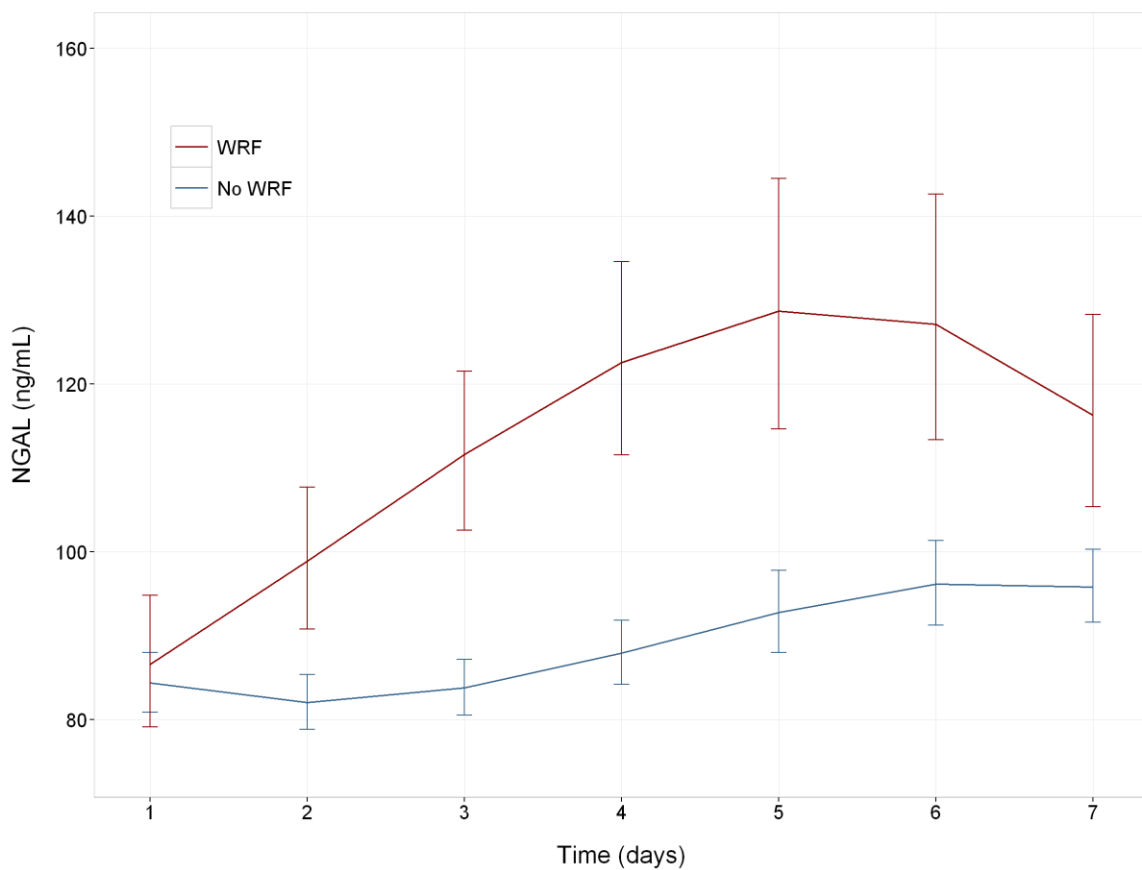
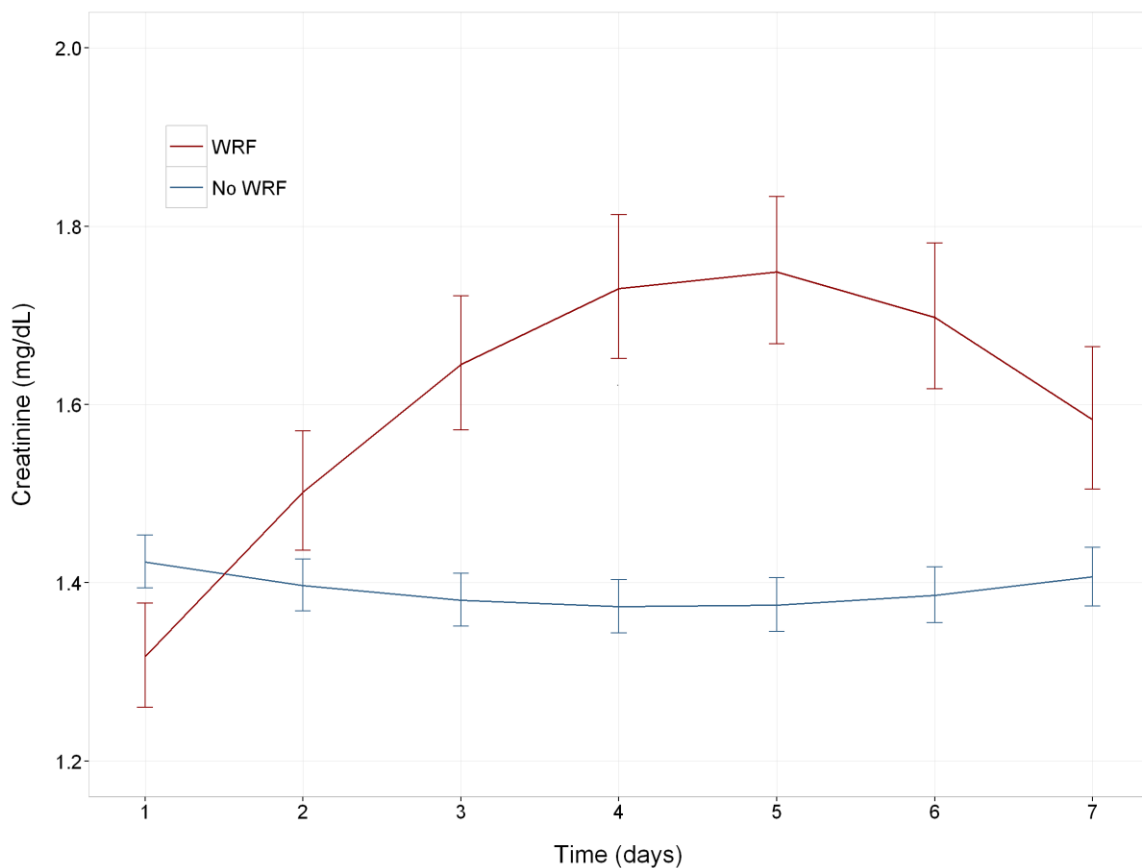
**Table S3. Predictive value of NGAL and Creatinine for alternate WRF**

WRF definition	Baseline Values		
	Creatinine AUC	NGAL AUC	P
≥ 0.6 mg/dL increase	0.637	0.656	0.429
≥ 1.2 mg/dL increase	0.678	0.689	0.753
≥ 25% increase	0.575	0.512	0.077
≥ 50% increase	0.515	0.564	0.395
≥ 100% increase	0.524	0.590	0.083
≥ 0.3 mg/dL & ≥ 25% increase	0.532	0.545	0.710
WRF definition	Day 2 values		
	Creatinine AUC	NGAL AUC	P
≥ 0.6 mg/dL increase	0.701	0.637	0.142
≥ 1.2 mg/dL increase	0.758	0.672	0.202
≥ 25% increase	0.517	0.512	0.870
≥ 50% increase	0.583	0.564	0.818
≥ 100% increase	0.659	0.590	0.509
≥ 0.3 mg/dL & ≥ 25% increase	0.517	0.520	0.939
WRF definition	Change on day 2		
	Creatinine AUC	NGAL AUC	P
≥ 0.6 mg/dL increase	0.768	0.493	<0.001
≥ 1.2 mg/dL increase	0.818	0.486	<0.001
≥ 25% increase	0.737	0.514	<0.001
≥ 50% increase	0.790	0.514	<0.001
≥ 100% increase	0.759	0.574	0.001
≥ 0.3 mg/dL & ≥ 25% increase	0.722	0.506	<0.001

**Table S4. Added value of NGAL on top of Creatinine for predicting WRF**

WRF definition	MV Model*			AUC	P**
	OR (95% CI)	χ <sup>2</sup>	P		
<b>≥ 0.3 mg/dl increase</b>					
Creatinine	1.12 (0.98-1.29)	2.87	0.090	0.580	0.013
NGAL	1.18 (1.04-1.35)	6.21	0.013		
<b>≥ 0.6 mg/dl increase</b>					
Creatinine	1.33 (1.11-1.59)	9.67	0.002	0.663	0.005
NGAL	1.27 (1.08-1.48)	8.86	0.003		
<b>≥ 1.2 mg/dl increase</b>					
Creatinine	1.49 (1.15-1.92)	9.65	0.002	0.705	0.022
NGAL	1.31 (1.05-1.59)	7.16	0.007		
<b>≥ 25% increase</b>					
Creatinine	0.69 (0.58-0.82)	16.47	0.000	0.595	0.009
NGAL	1.21 (1.05-1.4)	7.03	0.008		
<b>≥ 50% increase</b>					
Creatinine	0.84 (0.65-1.07)	1.83	0.176	0.603	0.013
NGAL	1.27 (1.06-1.51)	7.51	0.006		
<b>≥ 100% increase</b>					
Creatinine	1.01 (0.67-1.44)	0.00	0.953	0.603	0.058
NGAL	1.31 (0.99-1.61)	5.34	0.021		
<b>≥ 0.3 mg/dL &amp; ≥ 25% increase</b>					
Creatinine	0.8 (0.67-0.94)	6.66	0.010	0.576	0.007
NGAL	1.22 (1.06-1.42)	7.69	0.006		

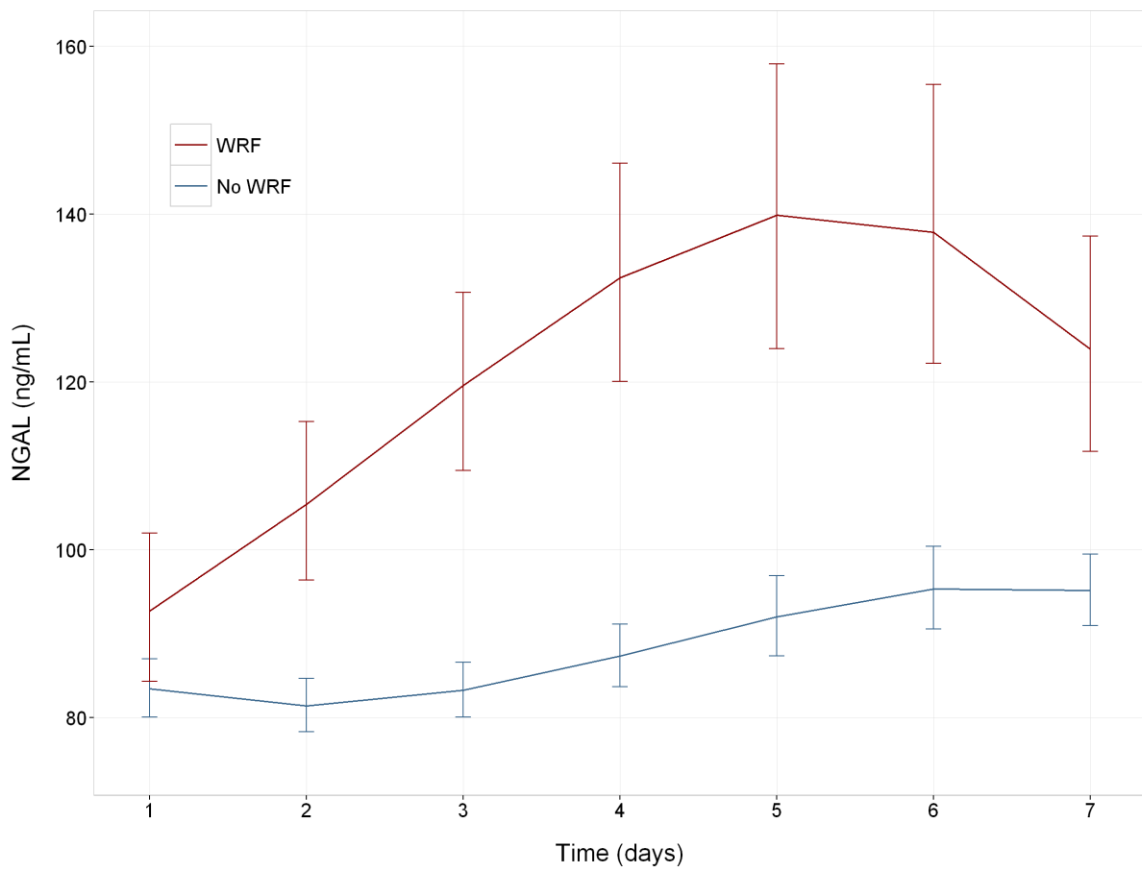
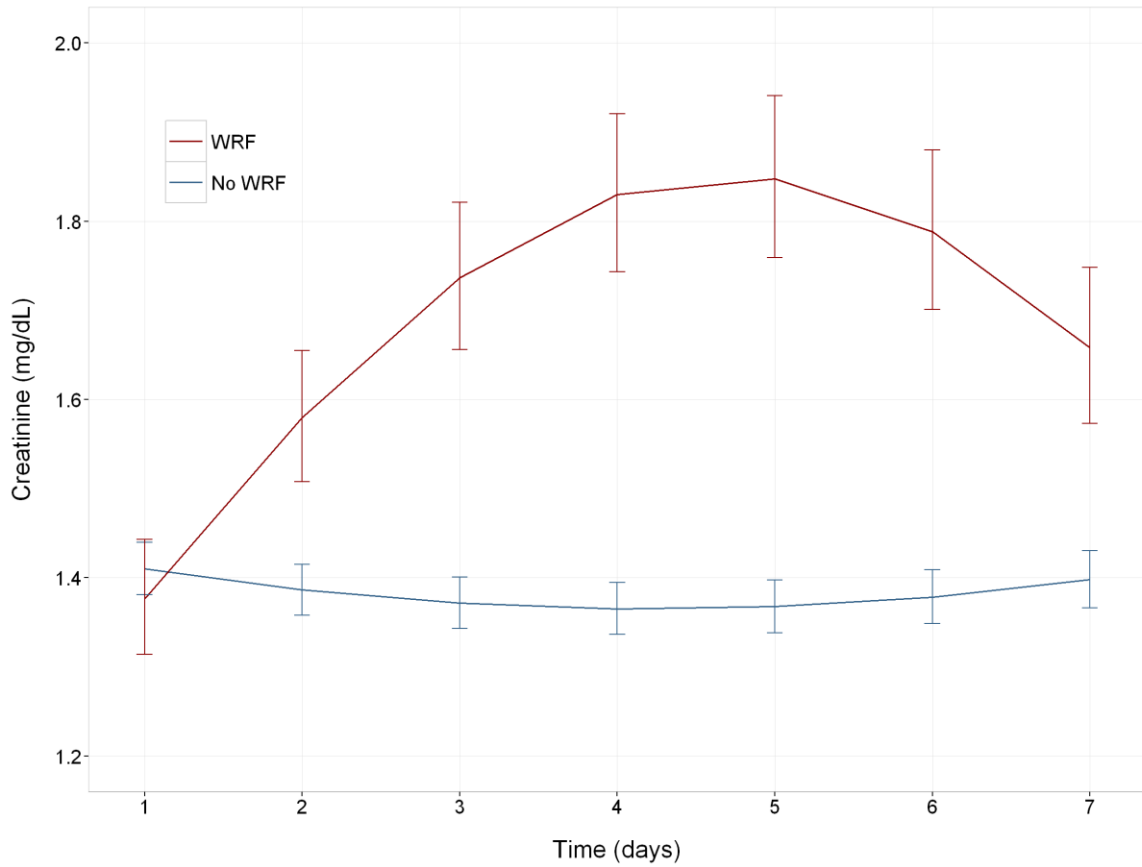
Figure S1. Changes in serum Creatinine and NGAL in patients with and without WRF, defined as a creatinine increase of  $\geq 25\%$



Least square means with 95% confidence intervals

WRF: worsening renal function, defined as creatinine rise  $\geq 25\%$  by day 4

Figure S2. Changes in serum Creatinine and NGAL in patients with and without WRF, defined as a combined creatinine increase of  $\geq 0.3$  mg/dL and  $\geq 25\%$



Least square means with 95% confidence intervals over time

WRF: worsening renal function, defined as combined creatinine increase of  $\geq 0.3$  mg/dL and  $\geq 25\%$  by day 4

Figure S3. Relative changes in serum Creatinine and NGAL in patients with WRF, defined as a creatinine increase of  $\geq 25\%$

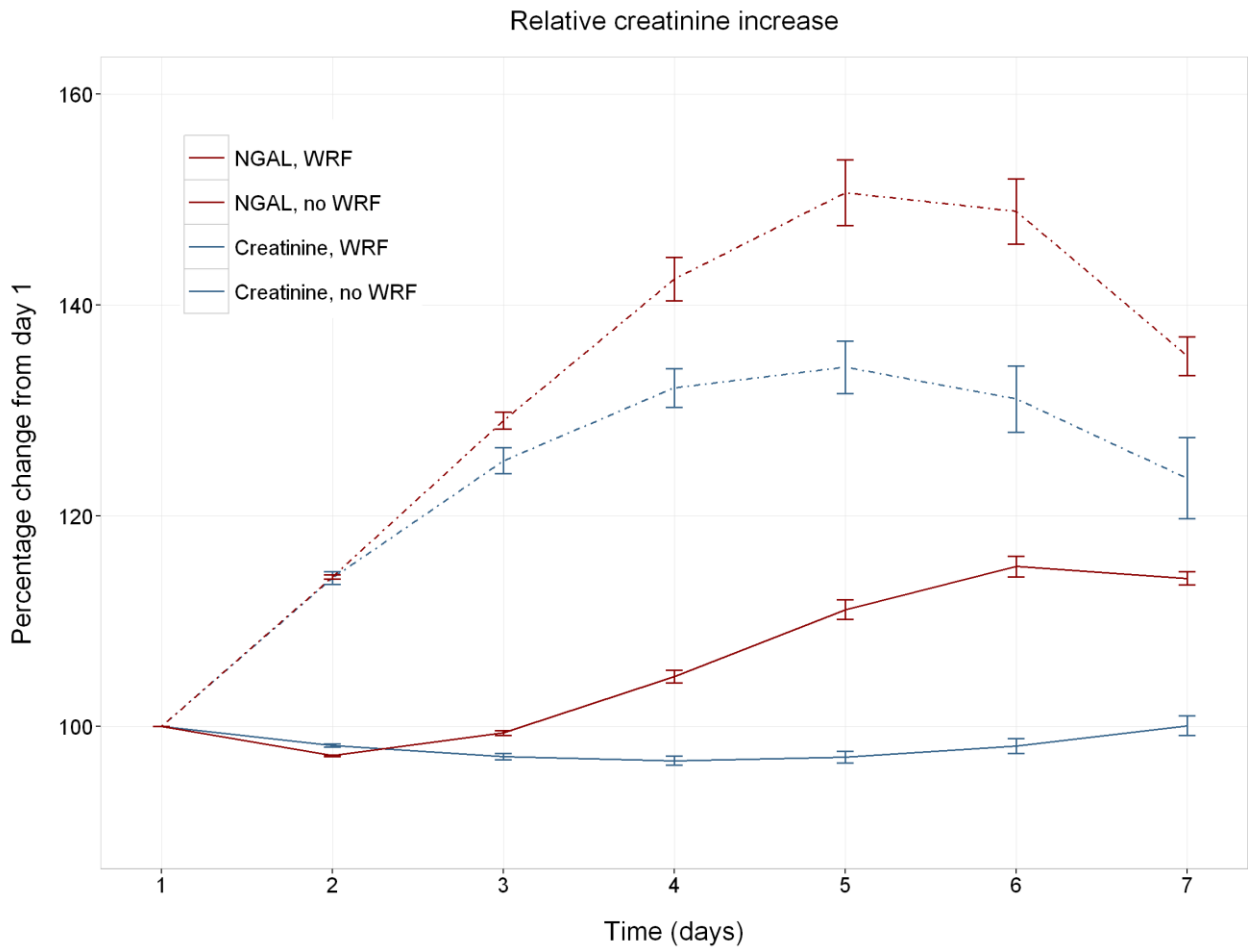




Figure S4. Relative changes in serum Creatinine and NGAL in patients with WRF, defined as a combined creatinine increase of  $\geq 0.3$  mg/dL and  $\geq 25\%$

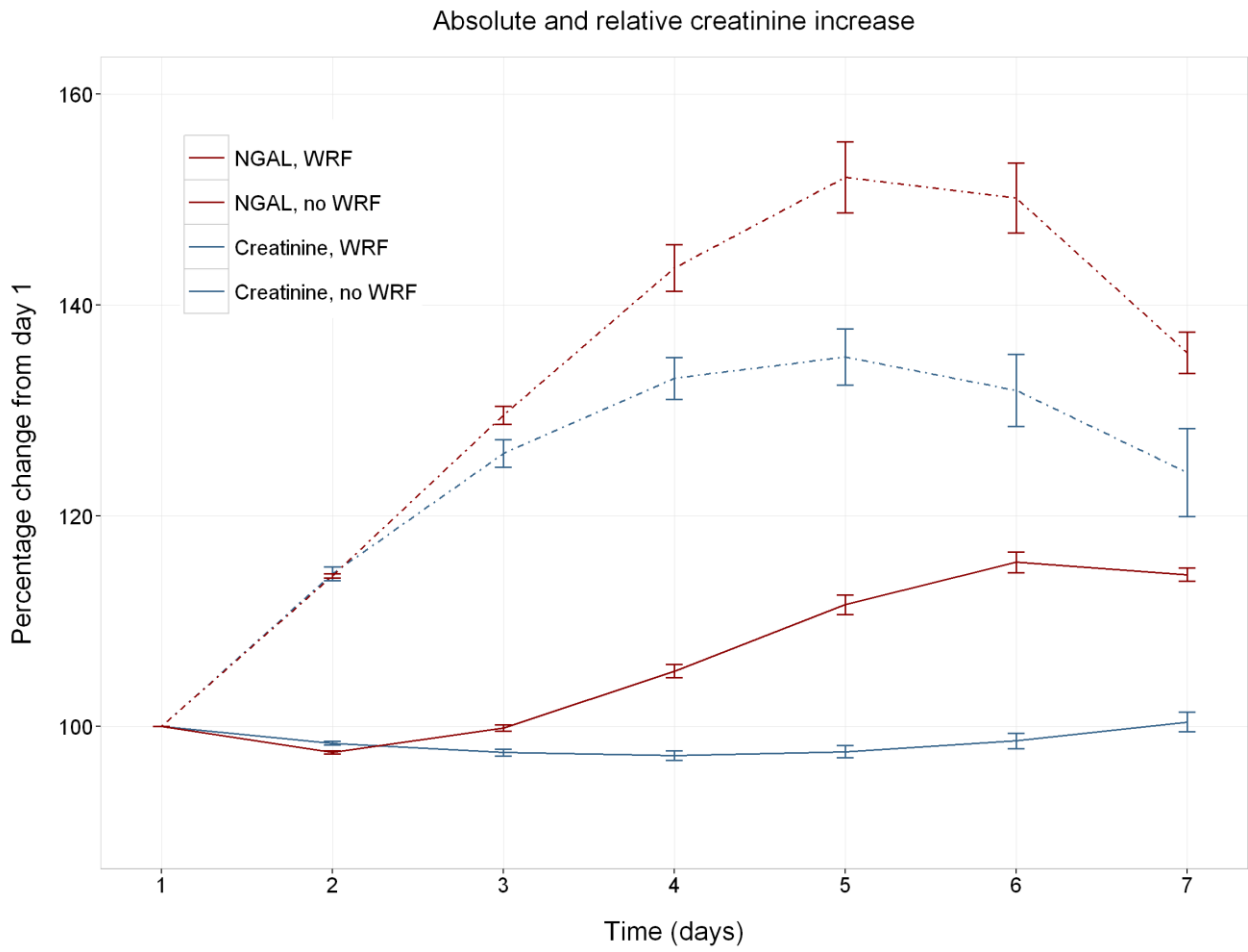


Figure S5. Relationships of baseline NGAL, creatinine and absolute creatinine change with 180-day mortality and the 60-day composite endpoint

