

*Supplementary Files*

# **The SBP-Box Gene *VpSBP11* from Chinese Wild *Vitis* is Involved in Floral Transition and Affects Leaf Development**

**Hongmin Hou<sup>1,2,3,†</sup>, Xiaoxiao Yan<sup>1,2,†</sup>, Ting Sha<sup>3</sup>, Qin Yan<sup>1,2</sup> and Xiping Wang<sup>1,2,\*</sup>**

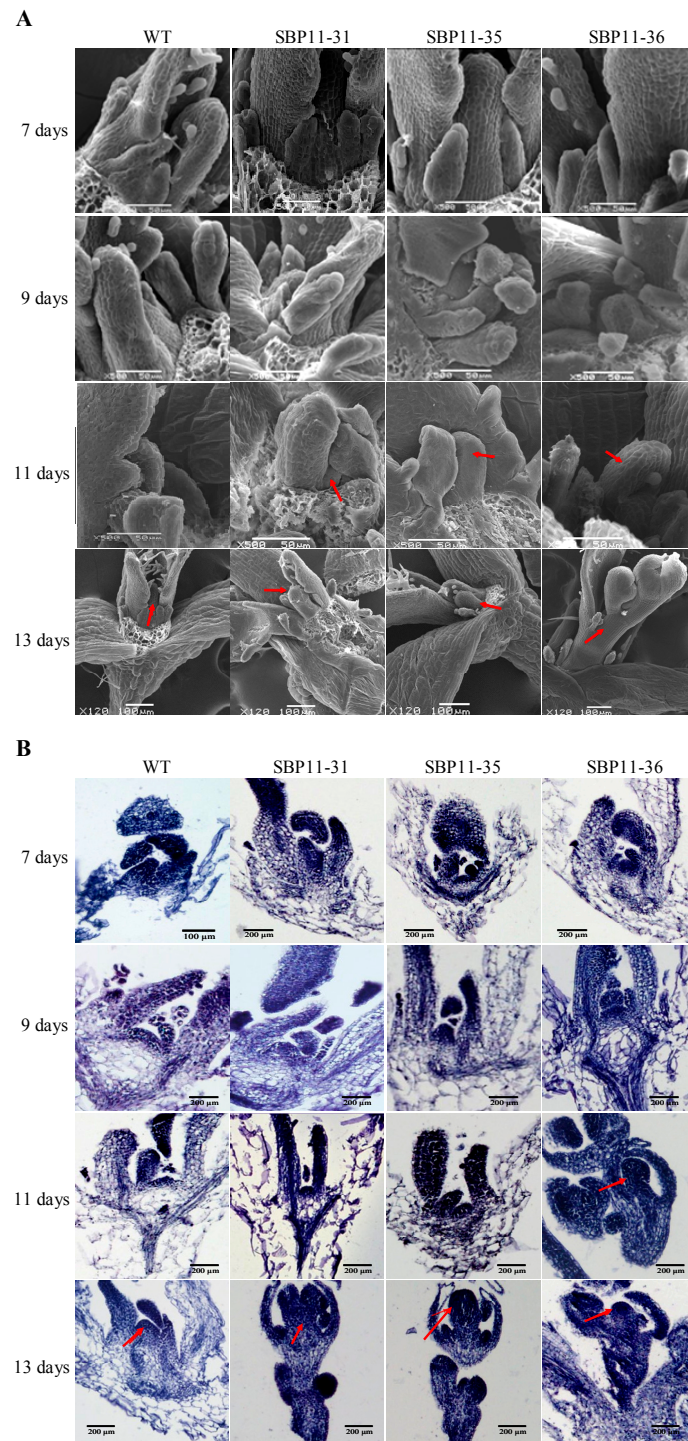
1 State Key Laboratory of Crop Stress Biology in Arid Areas, College of Horticulture, Northwest A&F University, Yangling, Shaanxi 712100, China ; E-Mail: hmhou@qau.edu.cn (H.H.); xiaoxyan@nwafu.edu.cn (X.Y.); yanqin0421@gmail.com (Q.Y.)

2 Key Laboratory of Horticultural Plant Biology and Germplasm Innovation in Northwest China, Ministry of Agriculture, Yangling, Shaanxi 712100, China;

3 College of Horticulture, Qingdao Agricultural University, Qingdao, Shandong 266109, China. shating789000@gmail.com (T.S.)

† These two authors contributed equally to this work

\* Correspondence: E-Mail: wangxiping@nwsuaf.edu.cn; Tel.: 86-29-87082429.



**Figure S1.** Scanning electron microscope (SEM) analysis (A) and paraffin sectioning (B) of flower primordia transformations after 7, 9, 11 and 13 days germination in wild-type (WT) and three transgenic lines. The flower primordia at 11 and 13 days after germination are marked by red arrows. The triplicate results of the two methods were consistent.