

**Soluble Epoxide Hydrolase Inhibition Protected against Angiotensin II-induced  
Adventitial Remodeling**

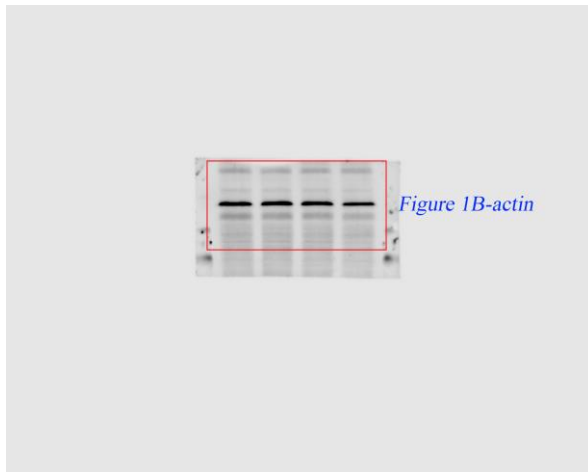
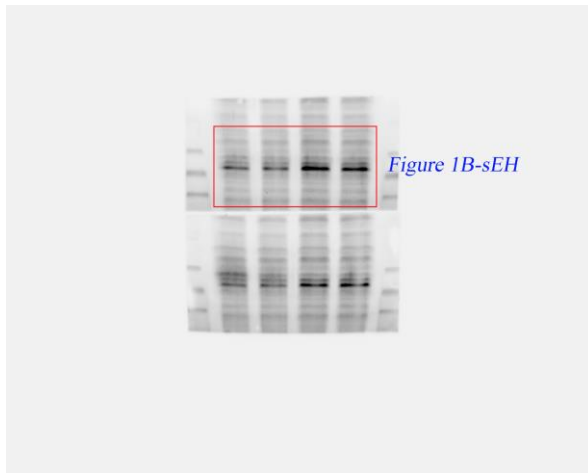
Chi Zhou, Jin Huang, Qing Li, Jiali Nie, Xizhen Xu, Dao Wen Wang

Division of Cardiology, Department of Internal Medicine, Tongji Hospital, Tongji Medical  
College of Huazhong University of Science and Technology, Hubei Key Laboratory of  
Genetics and Molecular Mechanisms of Cardiological Disorders, Wuhan 430030,  
China;

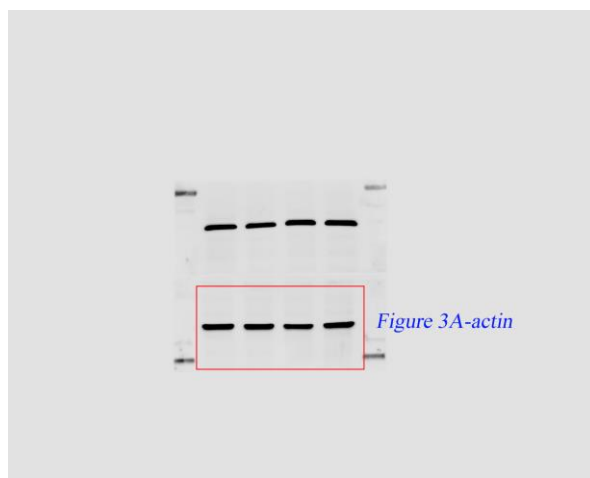
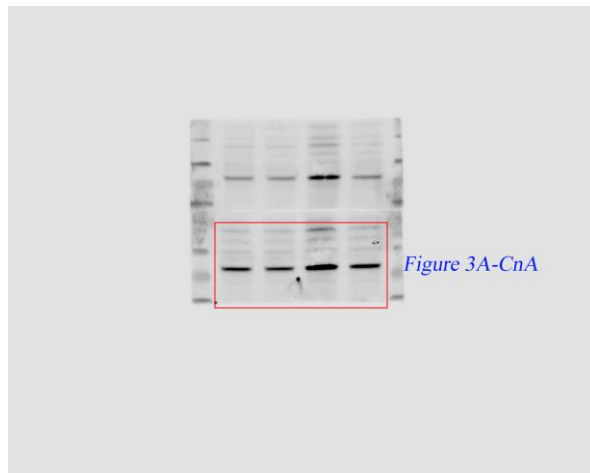
## Full-length gels and blots

The cropped gels/blots were processed without changing brightness and contrast of the images by Adobe Photoshop and Illustrator software.

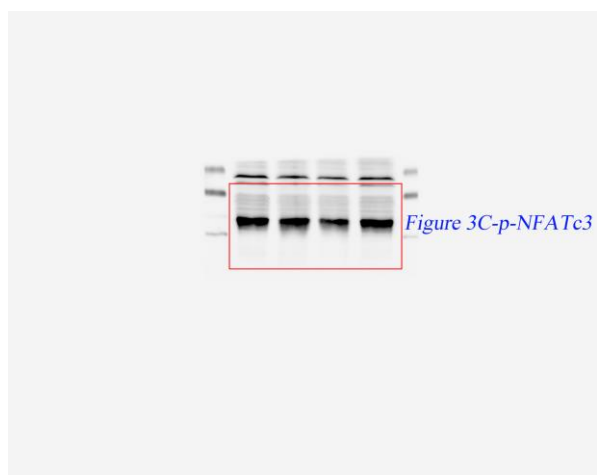
### Figure 1B

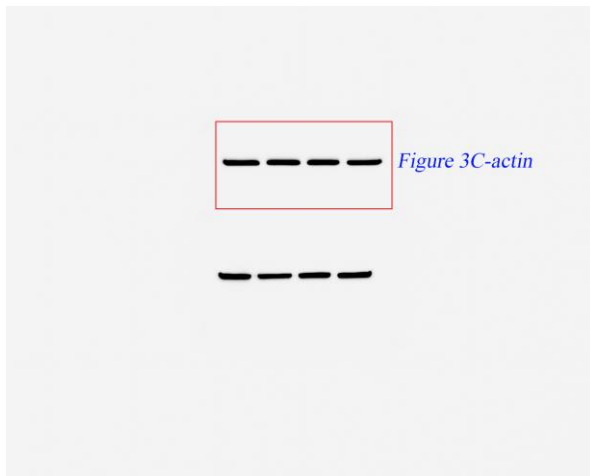
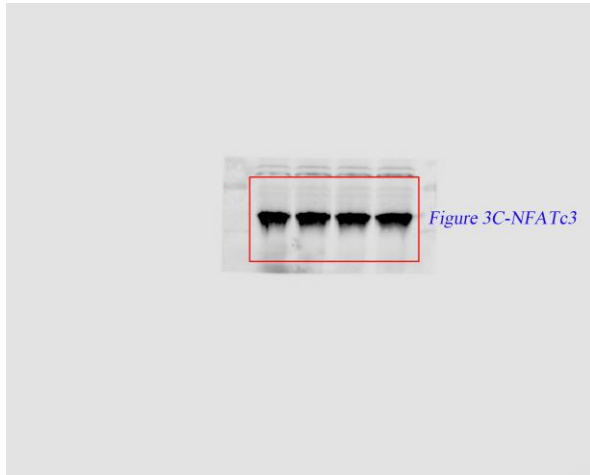


**Figure 3A**

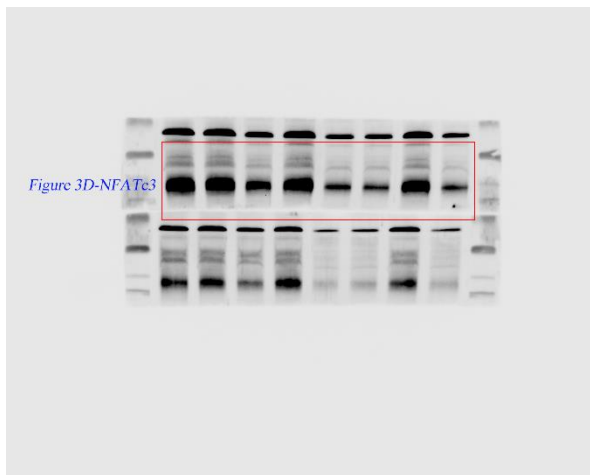


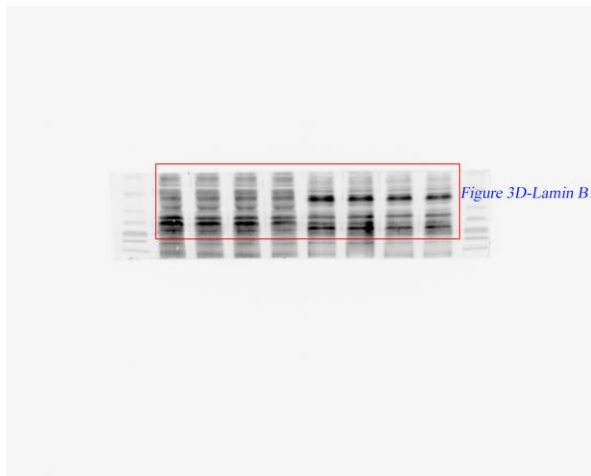
**Figure 3C**



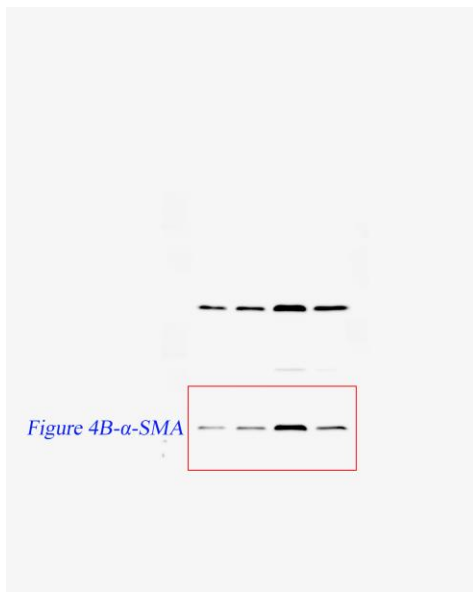


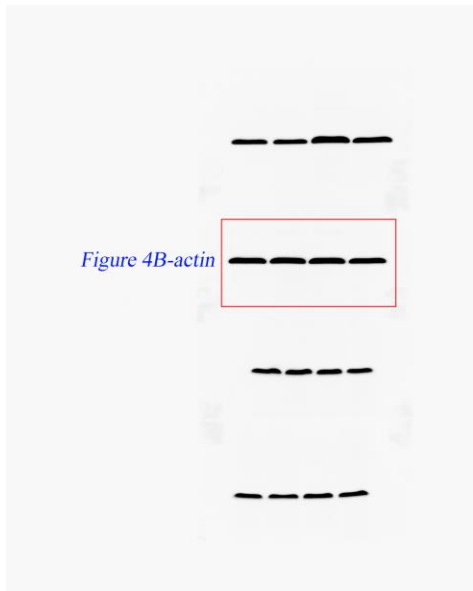
**Figure 3D**



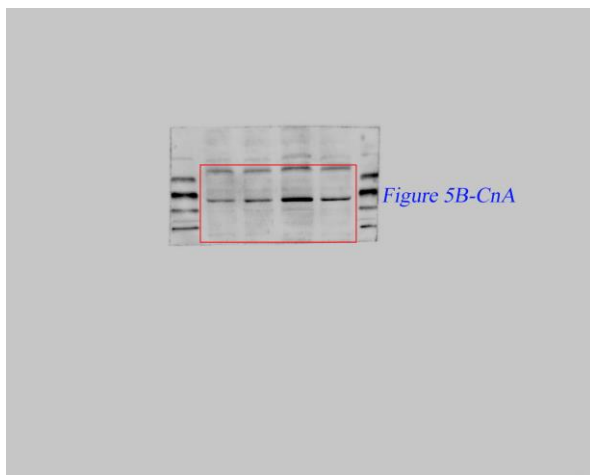


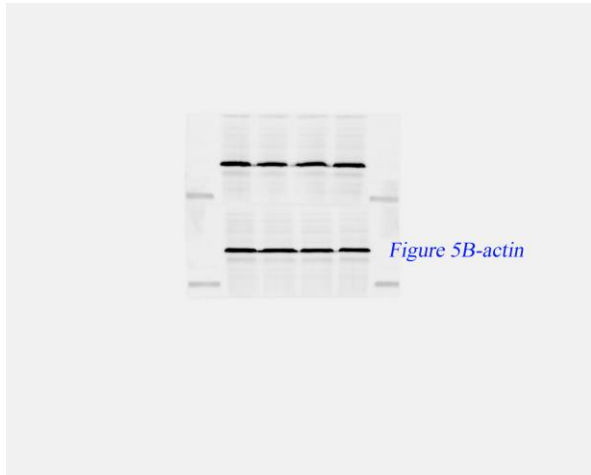
**Figure 4B**



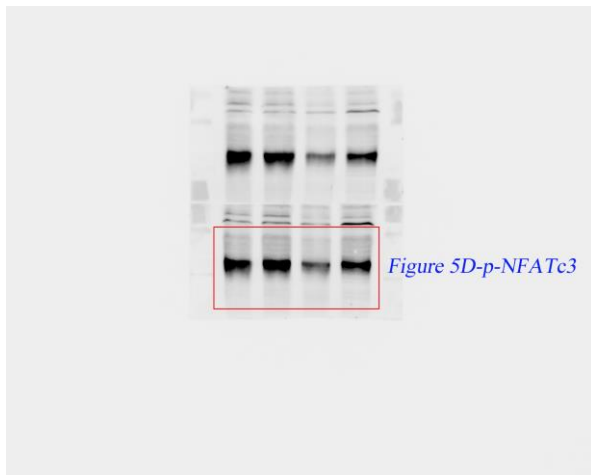


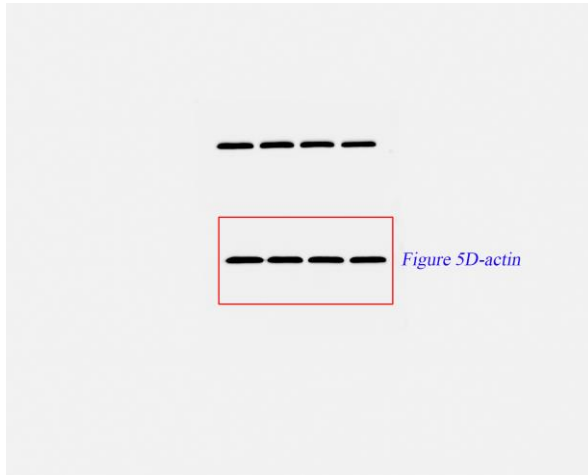
**Figure 5B**





**Figure 5D**





**Figure 5F**

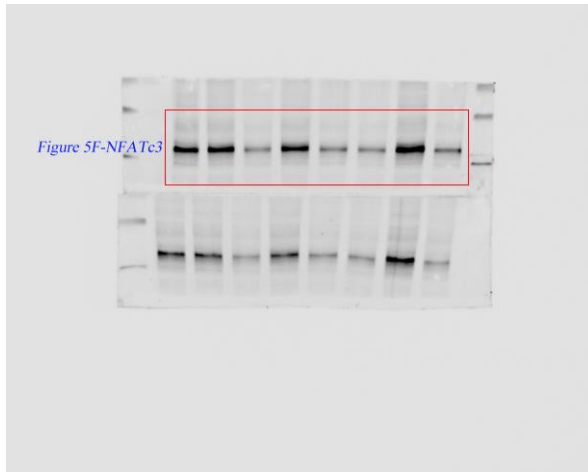




Figure 5F-Lamin B1

