

Xylapeptide A, an Antibacterial Cyclopentapeptide with an Uncommon *L*-Pipicolinic Acid Moiety from the Associated Fungus *Xylaria* sp. (GDG-102)

Wei-Feng Xu,^{†,‡,¶} Xue-Mei Hou,^{‡,§,¶} Fei-Hua Yao,[†] Na Zheng,[†] Jun Li,[†] Chang-Yun Wang,^{‡,§} Rui-Yun Yang^{*,†} and Chang-Lun Shao^{*,‡,§}

[†]State Key Laboratory for the Chemistry and Molecular Engineering of Medicinal Resources, College of Chemistry and Pharmaceutical Sciences, Guangxi Normal University, Guilin 541004, The People's Republic of China

[‡]Key Laboratory of Marine Drugs, The Ministry of Education of China, School of Medicine and Pharmacy, Ocean University of China, Qingdao 266003, The People's Republic of China

[§]Laboratory for Marine Drugs and Bioproducts, Qingdao National Laboratory for Marine Science and Technology, Qingdao 266200, The People's Republic of China

[¶] These authors contributed equally to this work

* To whom correspondence should be addressed. Tel/Fax: +86-773-2120-958 (R.-Y.Y.); +86-532-8203-1503 (C.-L.S.). E-mails: yang_rui_yun@163.com (R.-Y.Y.); shaochenglun@163.com (C.-L.S.).

List of Supporting Information

Figure S1. ^1H NMR spectra of the organic extracts, and xylapeptides A and B in CDCl_3 .

Figure S2. ^1H NMR (500 MHz, CDCl_3) spectrum of compound **1**.

Figure S3. ^{13}C NMR (125 MHz, CDCl_3) spectrum of compound **1**.

Figure S4. ^1H - ^1H COSY (CDCl_3) spectrum of compound **1**.

Figure S5. HSQC (CDCl_3) spectrum of compound **1**.

Figure S6. HMBC (CDCl_3) spectrum of compound **1**.

Figure S7. HRESIMS spectrum of compound **1**.

Figure S8. ESI MS^2 spectrum of compound **1**.

Figure S9. ^1H NMR (400 MHz, CDCl_3) spectrum of compound **2**.

Figure S10. ^{13}C NMR (100 MHz, CDCl_3) spectrum of compound **2**.

Figure S11. ^1H - ^1H COSY (CDCl_3) spectrum of compound **2**.

Figure S12. HSQC (CDCl_3) spectrum of compound **2**.

Figure S13. HMBC (CDCl_3) spectrum of compound **2**.

Figure S14. HRESIMS spectrum of compound **2**.

Figure S15. ESI MS^2 spectrum of compound **2**.

Figure S16. Assignments of ESI MS^2 fragmentation data for **1** and **2**.

Figure S17. Marfey's analysis of the amino acids in **1** and **2** on UPLC-MS.

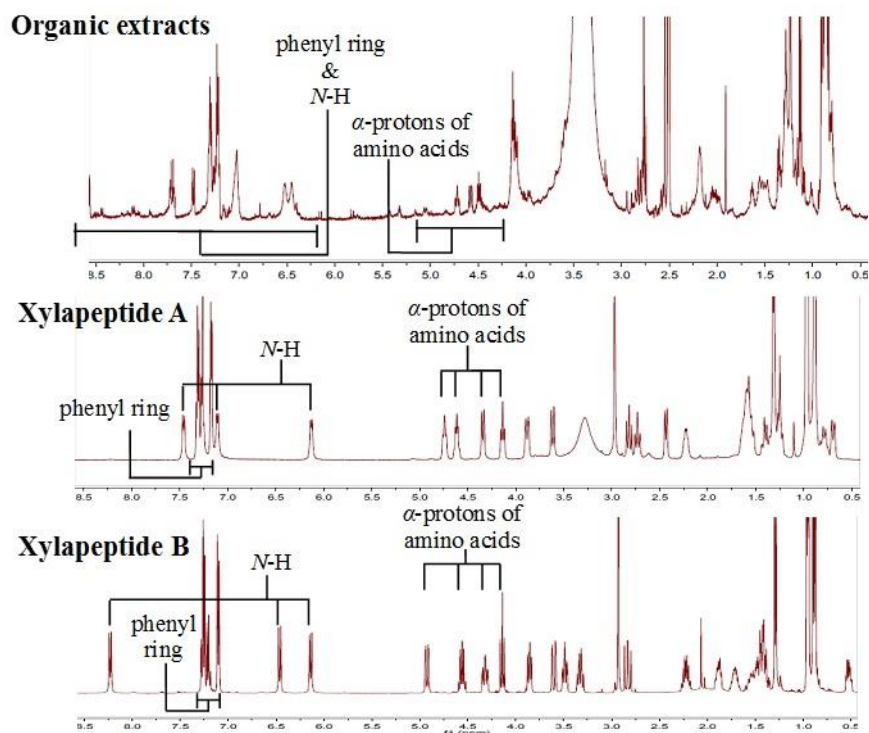


Figure S1. ^1H NMR spectra of the organic extracts, and xylapeptides A and B in CDCl_3 .

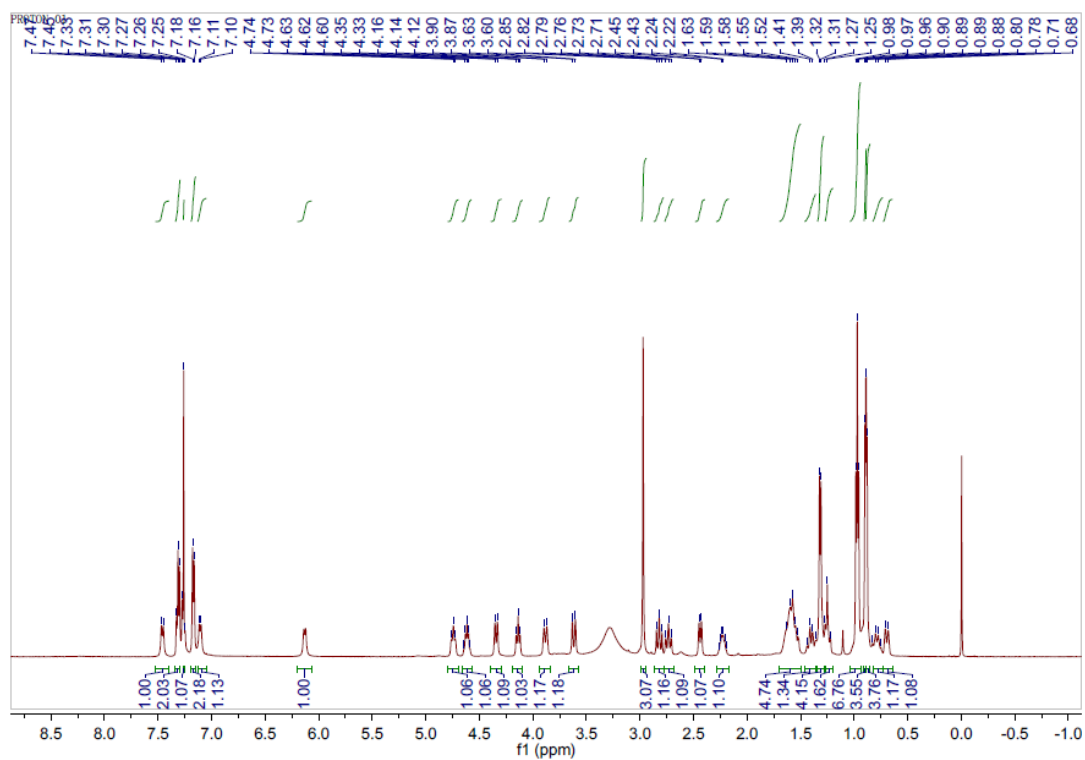


Figure S2. ^1H NMR (500 MHz, CDCl_3) spectrum of compound **1**.

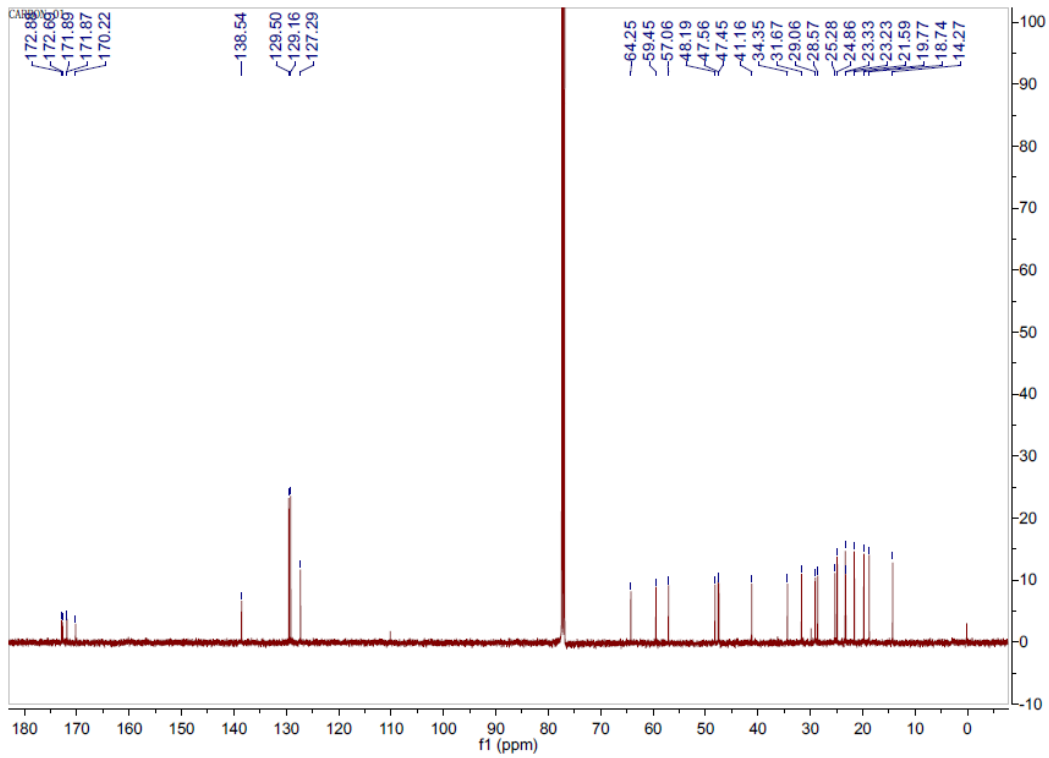


Figure S3. ^{13}C NMR (125 MHz, CDCl_3) spectrum of compound **1**.

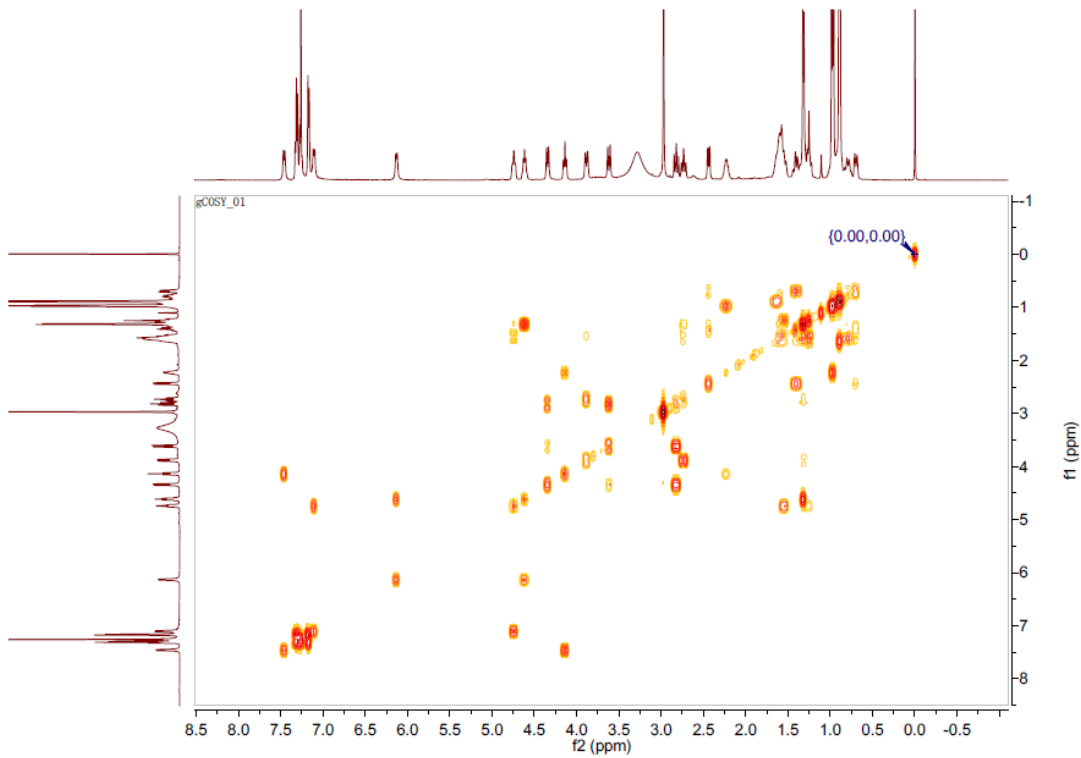


Figure S4. ^1H - ^1H COSY (CDCl_3) spectrum of compound **1**.

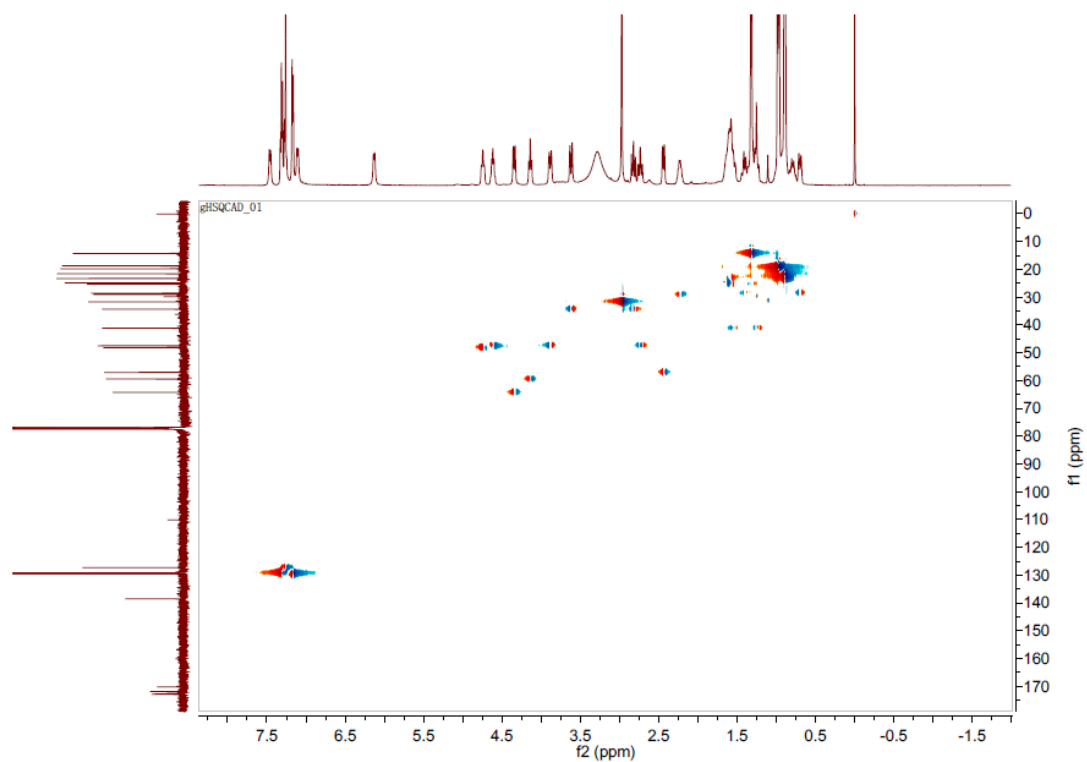


Figure S5. HSQC (CDCl₃) spectrum of compound **1**.

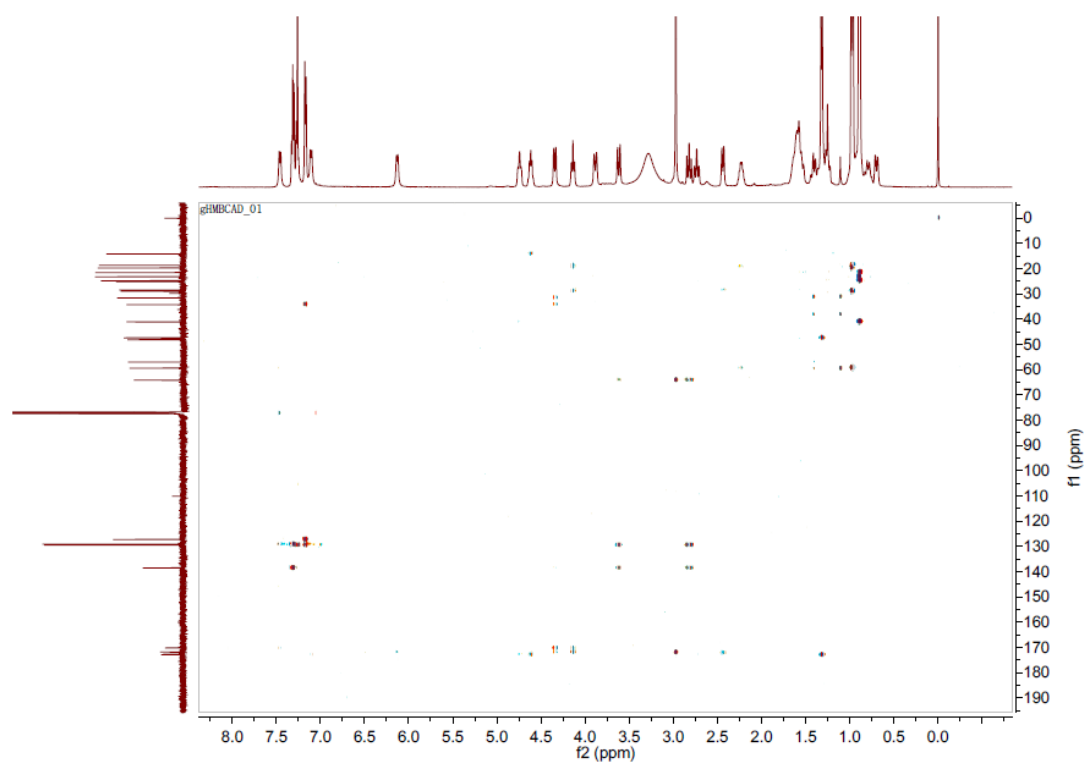


Figure S6. HMBC (CDCl₃) spectrum of compound **1**.

20160112-CY23_160112104831 #91 RT: 0.79 AV: 1 NL: 1.51E7
T: FTMS + c ESI Full ms [150.00-2000.00]

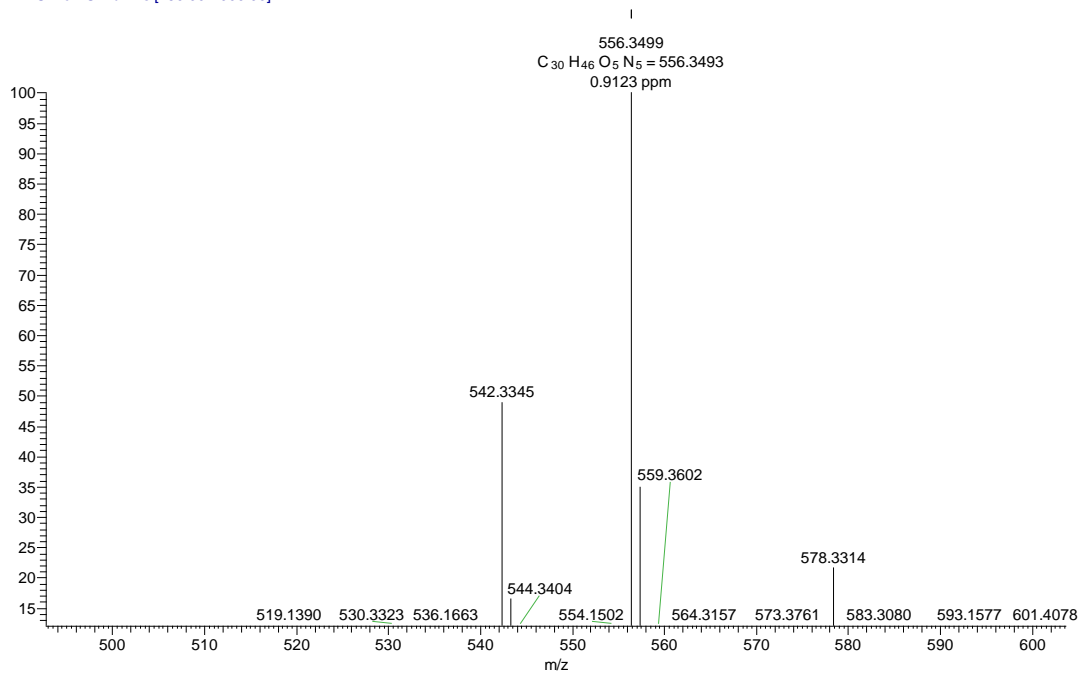


Figure S7. HRESIMS spectrum of compound **1**.

20160120-CY23_160120102732 #206-252 RT: 1.67-2.32 AV: 47 NL: 1.66E6
T: Average spectrum MS2 556.00 (206-252)

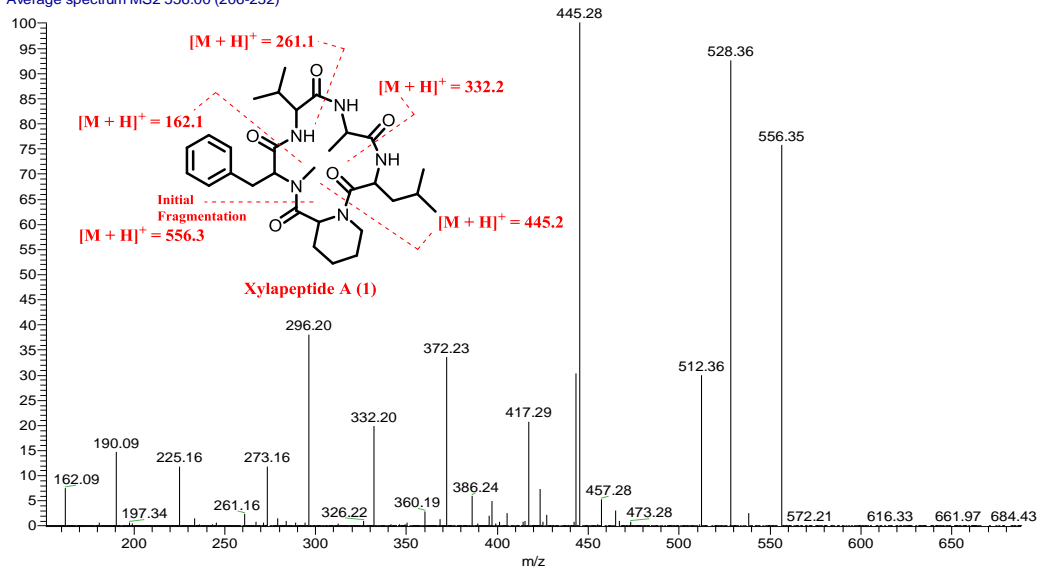


Figure S8. ESI MS² spectrum of compound **1**.

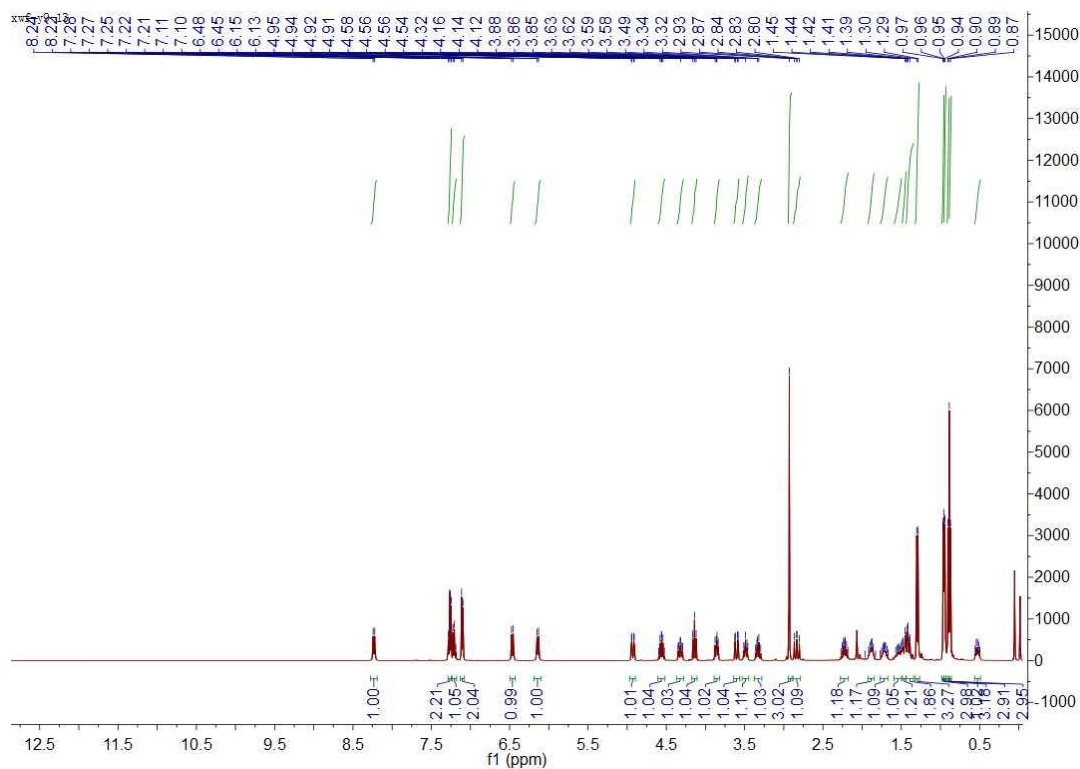


Figure S9. ^1H NMR (400 MHz, CDCl_3) spectrum of compound 2.

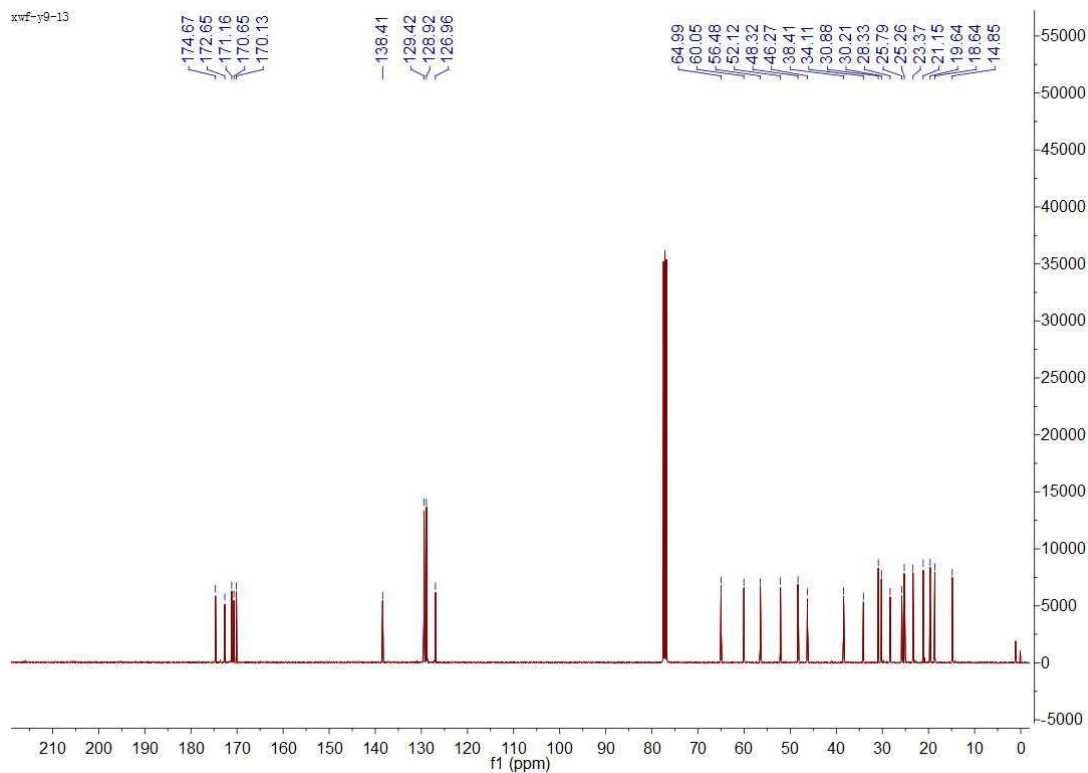


Figure S10. ^{13}C NMR (100 MHz, CDCl_3) spectrum of compound 2.

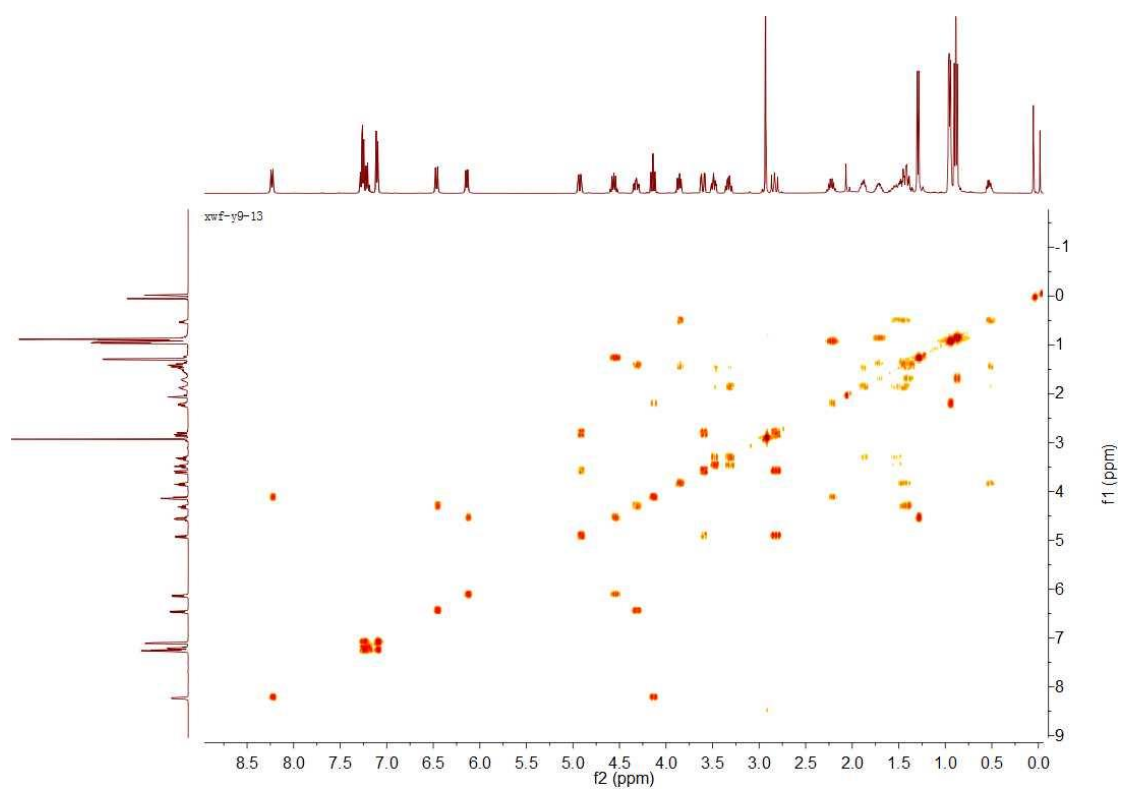


Figure S11. ^1H - ^1H COSY (CDCl_3) spectrum of compound **2**.

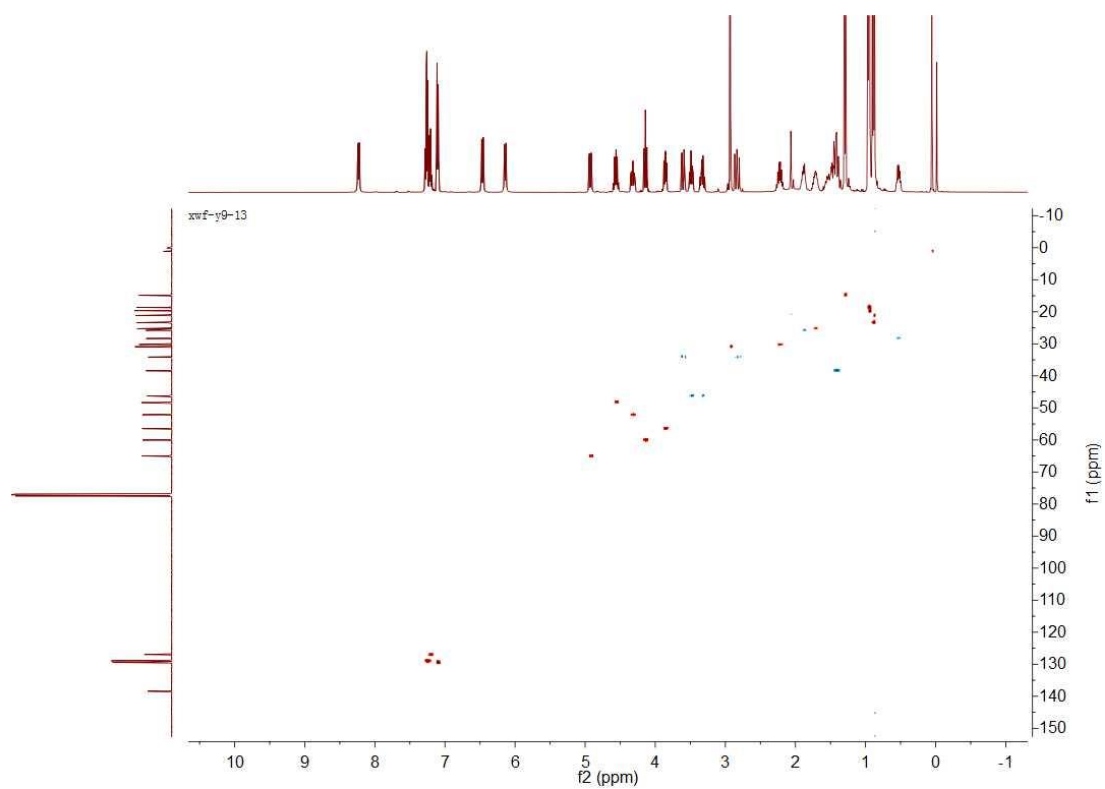


Figure S12. HSQC (CDCl_3) spectrum of compound **2**.

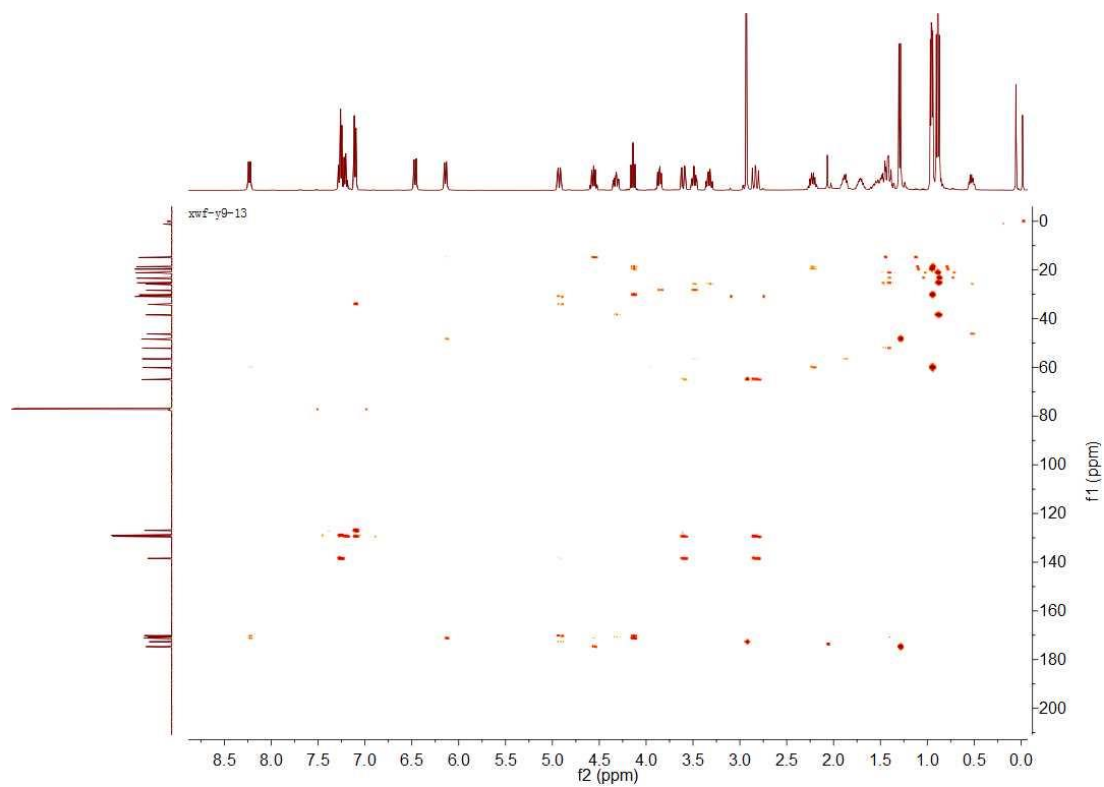


Figure S13. HMBC (CDCl₃) spectrum of compound **2**.

20160112-Y9-13_160112104831 #89 RT: 0.78 AV: 1 NL: 2.00E7
T: FTMS + c ESI Full ms [150.00-2000.00]

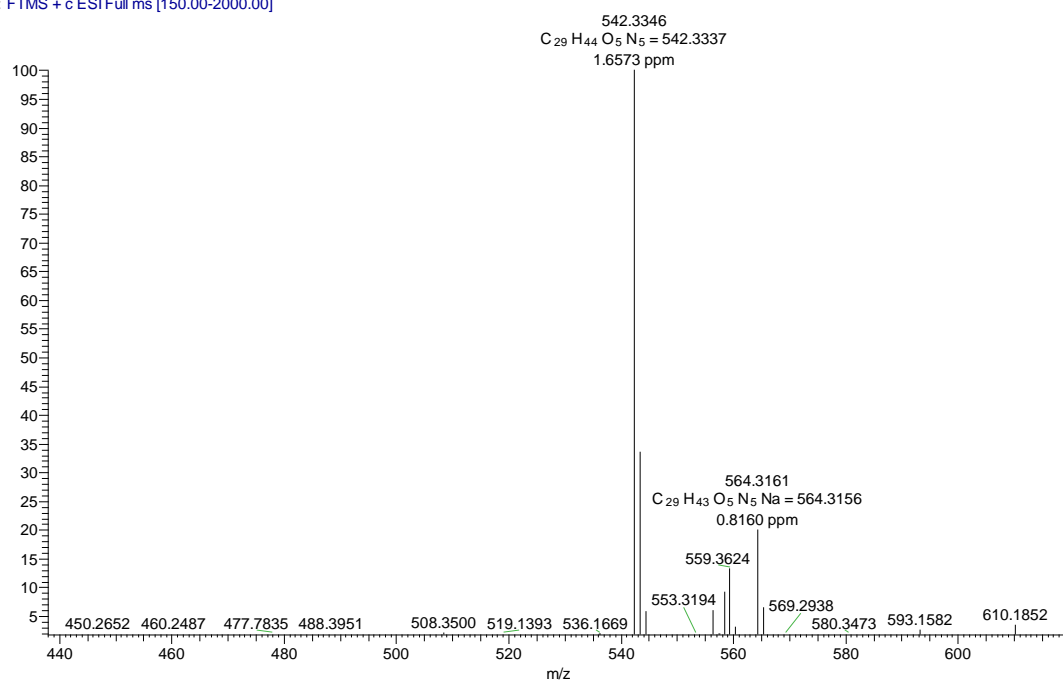


Figure S14. HRESIMS spectrum of compound **2**.

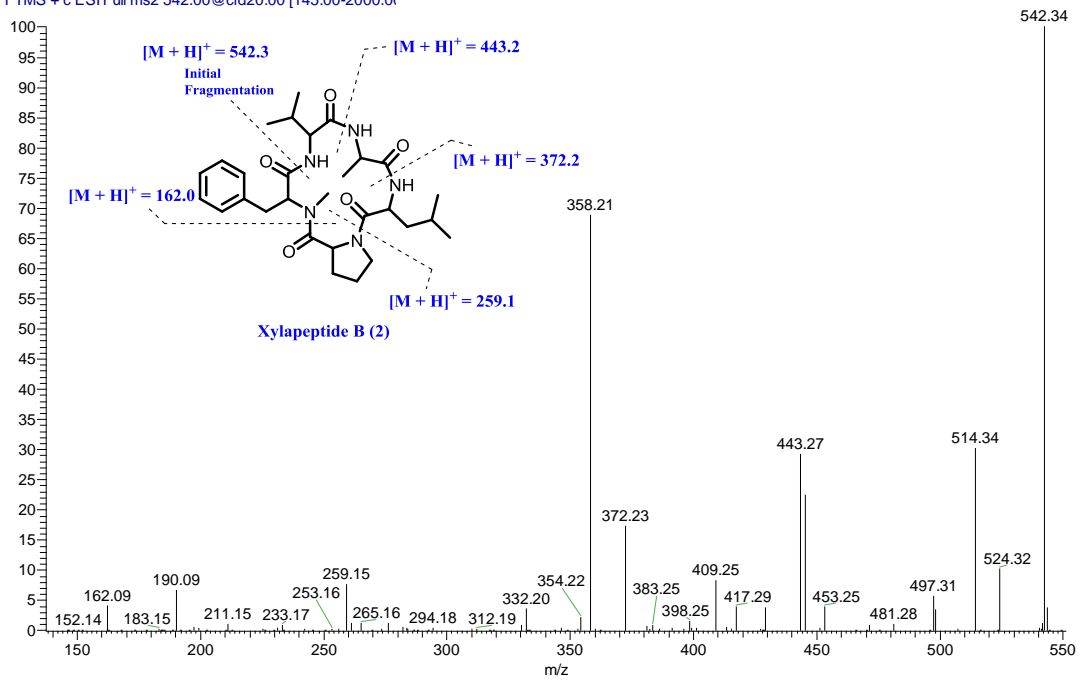


Figure S15. ESI MS² spectrum of compound 2.

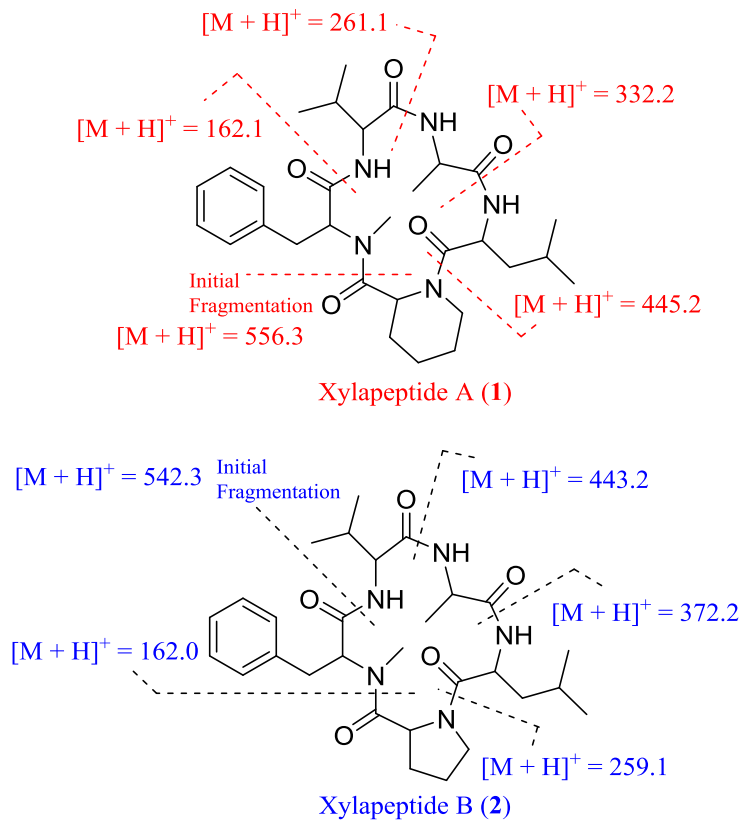


Figure S16. Assignments of ESI MS² fragmentation data for 1 and 2.

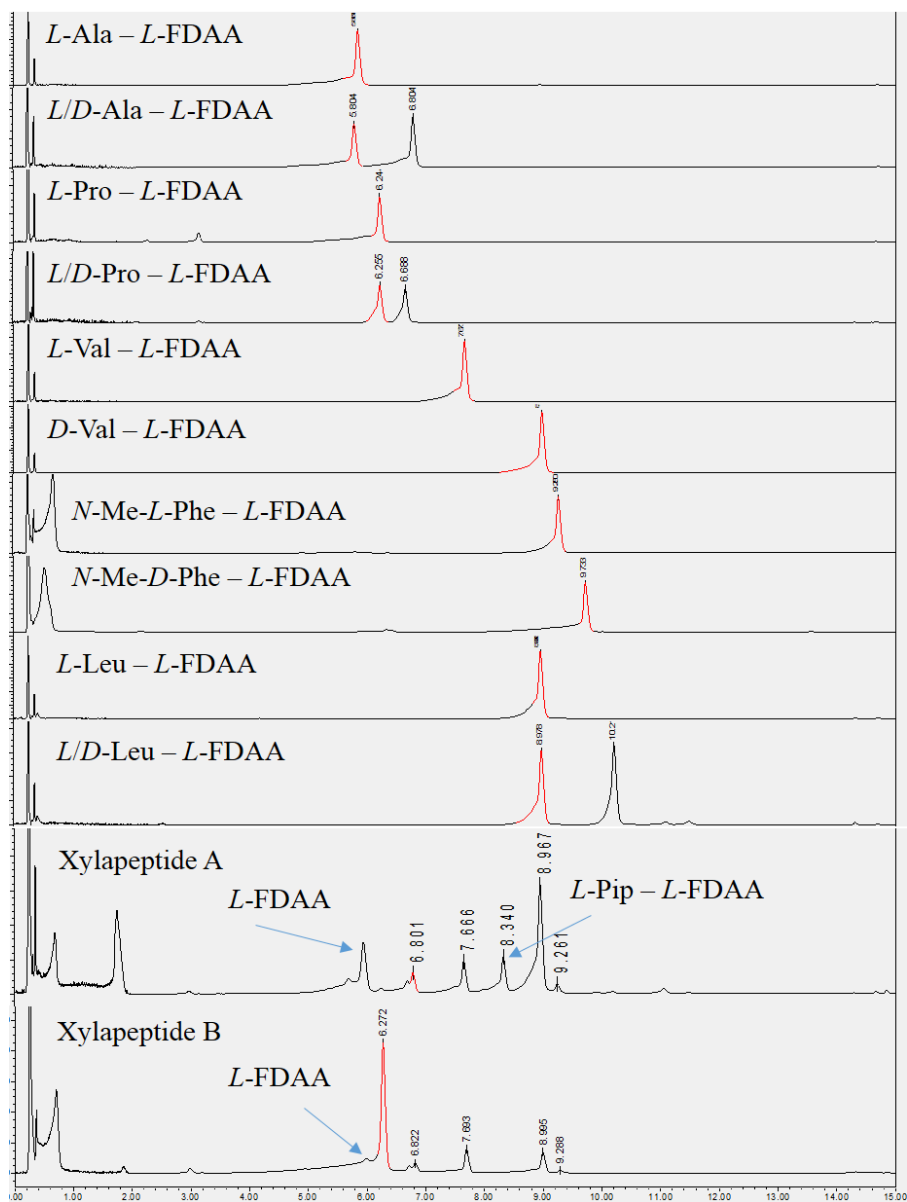


Figure S17. Marfey's analysis of the amino acids in **1** and **2** on UPLC-MS.