

Supplementary Information

Visualization of Synthetic Vascular Smooth Muscle Cells in Atherosclerotic Carotid Rat Arteries by F-18 FDG PET

Kisoo Pahk^{1,2}, Chanmin Joung¹, Se-Mi Jung¹, Hwa Young Song¹, Ji Yong Park^{3,4}, Jung Woo Byun³, Yun-Sang Lee^{3,5}, Jin Chul Paeng⁶, Chunsook Kim⁷, Sungeun Kim^{2**}, and Won-Ki Kim^{1*}

¹*Department of Neuroscience, Korea University College of Medicine, Seoul, Korea;*

²*Department of Nuclear Medicine, Korea University Anam Hospital, Seoul, Korea;*

³*Department of Nuclear Medicine, Seoul National University College of Medicine, Seoul, Korea;*

⁴*Department of Biomedical Sciences, Seoul National University Graduate School, Seoul, Korea;*

⁵*Department of Molecular Medicine and Biopharmaceutical Sciences, Graduate School of Convergence Science and Technology, and College of Medicine, Seoul National University, Seoul, Korea;*

⁶*Department of Nuclear Medicine, Seoul National University Hospital, Seoul, Korea;*

⁷*Department of Nursing, Kyungdong University, Wonju, Korea*

***Corresponding Author:**

Won-Ki Kim, Ph.D.

Professor, Department of Neuroscience

Korea University College of Medicine

126-1, Anam-Dong 5-Ga, Seongbuk-Gu, Seoul 136-705, Korea

Tel: 82-2-2286-1095, Fax: 82-2-953-6095, E-mail: wonki@korea.ac.kr

**** Co-corresponding Author:**

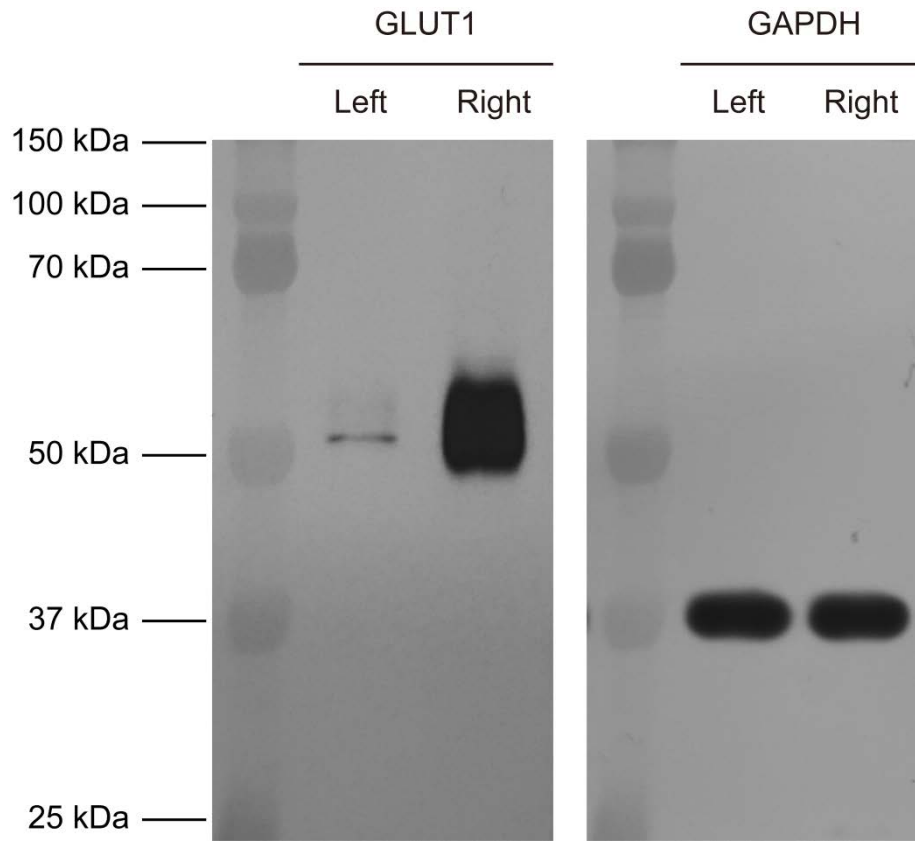
Sungeun Kim, M.D., Ph.D.

Professor, Department of Nuclear Medicine

Korea University Anam Hospital

126-1, Anam-Dong 5-Ga, Seongbuk-Gu, Seoul 136-705, Korea

Tel: 82-2-920-5540, Fax: 82-2-921-2971, E-mail: seiong@korea.ac.kr



Supplementary Figure 1. Immunoblot images of GLUT1 and GAPDH expressions. The cropped images are shown in Figure 6B.