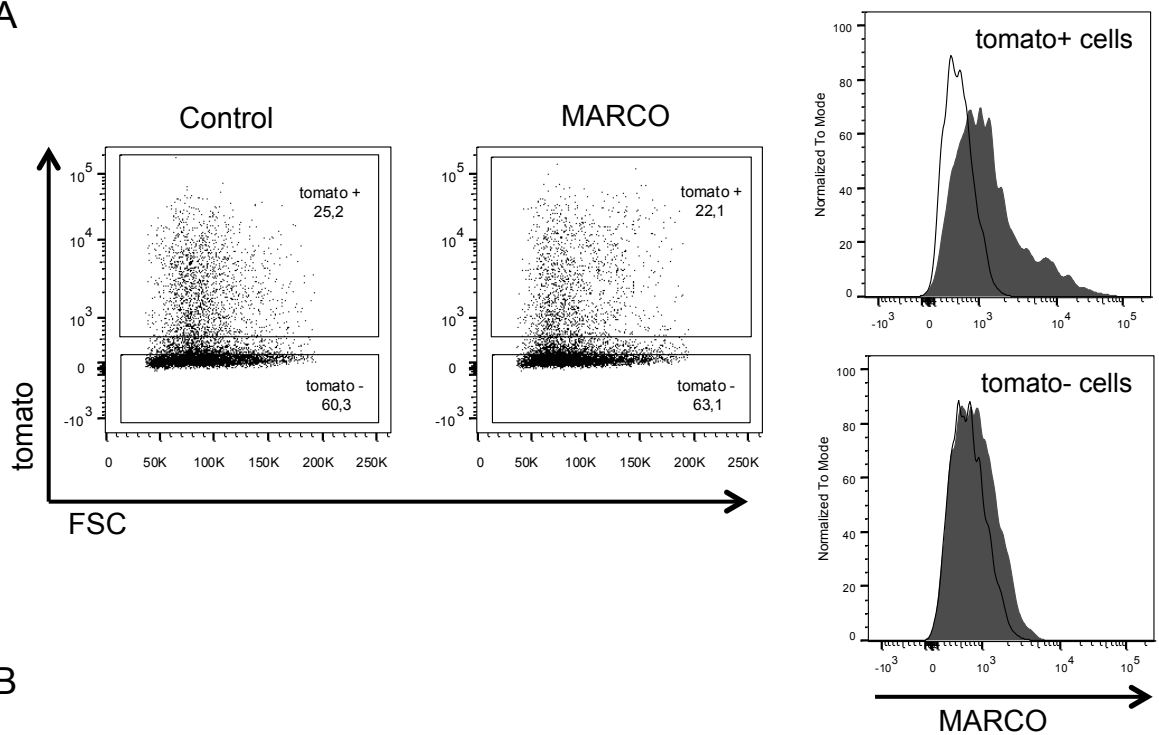


A



B

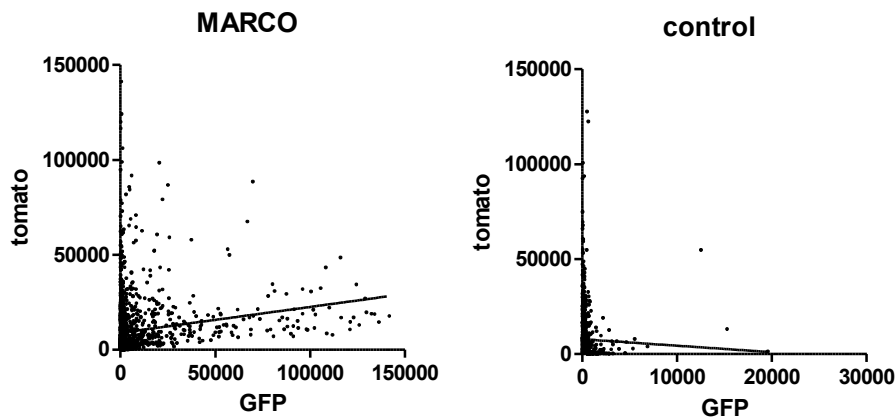


FIG S6. Analysis of transfected RAW264.7 cells. (A) FACS analysis of RAW264.7 cells transfected with MARCO/tomato- or tomato-expressing plasmids. FACS analysis with anti-MARCO was performed 16 h after transfection. Left: Frequencies of tomato+ cells. Right: MARCO staining on tomato+ (top) or tomato- (bottom) cell populations (open histogram: tomato-transfected cells, grey filled histogram: MARCO/tomato-transfected cells). (B) Scatter dot plot of linear regression of AdGFP infected MARCO or control transfected RAW264.7 cells.