

Supplementary Online Content

Miller IW, Camargo CA Jr, Arias SA, et al; ED-SAFE Investigators. Suicide prevention in an emergency department population: the ED-SAFE Study. *JAMA Psychiatry*. Published online April 29, 2017. doi:10.1001/jamapsychiatry.2017.0678

eTable 1. Timing of CLASP-ED telephone contacts

eTable 2. Cox proportional hazards model for the suicide attempts

eTable 3. Negative binomial regression model for suicide attempts as a count variable

eTable 4. Cox proportional hazards model for the suicide attempts including calendar month

eTable 5. Cox proportional hazards model for the effect of time on suicide attempts within each study phase

eTable 6. Cox proportional hazards model for the suicide composite

eTable 7. Negative binomial regression model for the suicide composite as a count variable

eFigure. Proportion of participants who remained suicide composite-free over time

This supplementary material has been provided by the authors to give readers additional information about their work.

eTable 1. Timing of CLASP-ED telephone contacts

Time	Participant to be contacted
Week 1 (ASAP after discharge from ED/hospital)	Patient
Week 2	Patient
Week 3	Significant Other
Weeks 4, 10, 22, 34 and 48	Patient
Weeks 8, 20 and 32	Significant Other

eTable 2. Cox proportional hazards model for the suicide attempts

Variables*	Hazards ratio (95% CI)	P-value
<i>Study phases</i>		
Phase 1 (Treatment as Usual)	Reference	-
Phase 2 (Universal Screening)	0.90 (0.67-1.21)	0.48
Phase 3 (Universal Screening + Intervention)	0.73 (0.55-0.97)	0.03
<i>Covariates</i>		
Age categories (quartiles)		
18-25.9 years	Reference	-
26-36.9 years	1.11 (0.78-1.59)	0.55
37-46.9 years	1.01 (0.70-1.47)	0.96
≥47 years	1.17 (0.78-1.74)	0.45
Female sex	1.06 (0.82-1.37)	0.68
Lives alone	0.91 (0.69-1.20)	0.52
Served in the military	0.85 (0.50-1.42)	0.53
Coexisting medical disorder†	0.96 (0.73-1.26)	0.75
Coexisting psychiatric disorder‡	2.32 (1.28-4.22)	0.01
Lifetime history of suicide attempt	1.29 (0.89-1.87)	0.17
Lifetime history of aborted attempt	1.02 (0.79-1.32)	0.89
Lifetime history of interrupted attempt	1.13 (0.86-1.47)	0.39
Lifetime history of non-suicidal self-injury	1.35 (1.04-1.75)	0.02
Columbia Suicide Severity Rating Scale (linear term)§	1.34 (0.90-1.99)	0.15

Columbia Suicide Severity Rating Scale (quadratic term)§	0.95 (0.87-1.02)	0.16
ED visit for psychiatric problems within the past 6-months	1.22 (0.89-1.67)	0.23
Hospitalization for psychiatric problems within past 6-months	2.29 (1.65-3.17)	<0.001
Suicide attempt in past week	1.36 (1.03-1.79)	0.03
Current alcohol misuse	1.38 (1.07-1.79)	0.01
Current drug use	0.98 (0.76-1.26)	0.88
Psychological distress (Global Severity Index score)¶	1.00 (0.98-1.02)	1.00
Quality of life (SF-6D score)¶	0.98 (0.95-1.06)	0.98

Abbreviation: CI, confidence interval; ED, emergency department

* None of the indicator variables for the participating sites were statistically significant (all $P > 0.05$)

† Defined by heart disease, cancer, HIV infection, diabetes, stroke, or chronic pain.

‡ Defined by depression, bipolar disorder, anxiety disorder, or schizophrenia.

§ Quadratic term included in the model based on likelihood ratio test. β -coefficient for the linear term, 0.30; β -coefficient for the quadratic term, -0.06.

¶ Hazard ratio for a one-unit increase in the corresponding scale.

eTable 3. Negative binomial regression model for suicide attempts as a count variable

Variables*	Risk ratio (95% CI)	P-value
<i>Study phases</i>		
Phase 1 (Treatment as Usual)	Reference	-
Phase 2 (Screening Only)	0.93 (0.70-1.23)	0.61
Phase 3 (Intervention)	0.75 (0.57-0.98)	0.04
<i>Covariates</i>		
<i>Age categories (quartiles)</i>		
18-25.9 years	Reference	-
26-36.9 years	1.19 (0.85-1.68)	0.31
37-46.9 years	1.01 (0.70-1.45)	0.97
≥47 years	1.24 (0.85-1.81)	0.27
Female sex	1.07 (0.83-1.38)	0.58
Lives alone	0.92 (0.71-1.20)	0.55
Served in the military	0.79 (0.48-1.32)	0.37
Coexisting medical disorder [†]	0.97 (0.75-1.27)	0.85
Coexisting psychiatric disorder [‡]	2.31 (1.30-4.10)	0.004
Lifetime history of suicide attempt	1.25 (0.87-1.79)	0.23
Lifetime history of aborted attempt	1.05 (0.81-1.35)	0.72

Lifetime history of interrupted attempt	1.06 (0.81-1.37)	0.68
Lifetime history of non-suicidal self-injury	1.35 (1.05-1.74)	0.02
Columbia Suicide Severity Rating Scale (linear term)§	1.25 (0.86-1.84)	0.24
Columbia Suicide Severity Rating Scale (quadratic term)§	0.96 (0.89-1.04)	0.29
ED visit for psychiatric problems within the past 6-months	1.22 (0.90-1.65)	0.2
Hospitalization for psychiatric problems within past 6-months	2.05 (1.50-2.80)	<0.001
Suicide attempt in past week	1.44 (1.11-1.88)	0.01
Current alcohol misuse	1.29 (1.01-1.65)	0.05
Current drug use	0.87 (0.68-1.11)	0.26

Psychological distress (Global Severity Index score) [¶]	1.00 (0.98-1.02)	0.98
Quality of life (SF-6D score) [¶]	1.00 (0.95-1.05)	0.98

Abbreviation: CI, confidence interval; ED, emergency department

* None of the indicator variables for the participating sites were statistically significant (all $P > 0.05$)

† Defined by heart disease, cancer, HIV infection, diabetes, stroke, or chronic pain.

‡ Defined by depression, bipolar disorder, anxiety disorder, or schizophrenia.

§ Quadratic term included in the model based on likelihood ratio test. β -coefficient for the linear term, 0.19; β -coefficient for the quadratic term, -0.03.

eTable 4. Cox proportional hazards model for the suicide attempts including calendar month

Variables*	Hazards ratio (95% CI)	P-value
<i>Study phases</i>		
Phase 1 (Treatment as Usual)	Reference	-
Phase 2 (Universal Screening)	0.88 (0.65-1.18)	0.39
Phase 3 (Universal Screening + Intervention)	0.70 (.52-.93)	0.02
<i>Covariates</i>		
Age categories (quartiles)		
18-25.9 years	Reference	-
26-36.9 years	1.11 (0.78-1.59)	0.56
37-46.9 years	.99 (0.68-1.64)	0.95
≥47 years	1.15 (0.77-1.71)	0.50
Female sex	1.05 (0.81-1.37)	0.71
Lives alone	0.91 (0.69-1.21)	0.53
Served in the military	0.85 (0.51-1.44)	0.55
Coexisting medical disorder†	0.95 (0.72-1.25)	0.74
Coexisting psychiatric disorder‡	2.31 (1.27-4.20)	0.01
Lifetime history of suicide attempt	1.31 (0.89-1.90)	0.15
Lifetime history of aborted attempt	1.02 (0.80-1.34)	0.80
Lifetime history of interrupted attempt	1.15 (0.87-1.51)	0.32
Lifetime history of non-suicidal self-injury	1.35 (1.04-1.75)	0.02
Columbia Suicide Severity Rating Scale (linear term)§	1.39 (0.93-2.07)	0.11
Columbia Suicide Severity Rating Scale (quadratic term)§	0.94 (0.87-1.02)	0.12
ED visit for psychiatric problems within the past 6-months	1.24 (0.90-1.71)	0.19
Hospitalization for psychiatric problems within past 6-months	2.47 (1.78-3.44)	<0.001
Suicide attempt in past week	1.38 (1.04-1.82)	0.02
Current alcohol misuse	1.44 (1.11-1.86)	0.01
Current drug use	1.01 (0.78-1.31)	0.94
Psychological distress (Global Severity Index score)¶	1.00 (0.98-1.02)	0.89
Quality of life (SF-6D score)¶	1.00 (0.95-1.06)	0.91
Site 2	0.83 (0.47-1.44)	0.50
Site 3	1.19 (0.79-1.81)	0.41
Site 4	0.77 (0.48-1.24)	0.28
Site 5	1.13 (0.73-1.76)	0.58
Site 6	0.67 (0.41-1.10)	0.11
Site 7	0.94 (0.58-1.53)	0.81

Site 8	0.85 (0.54-1.35)	0.49
Calendar Month 2	1.02 (0.55-1.87)	0.96
Calendar Month 3	1.26 (0.71-2.23)	0.44
Calendar Month 4	0.80 (0.42-1.50)	0.48
Calendar Month 5	0.95 (0.52-1.73)	0.86
Calendar Month 6	1.09 (0.61-1.96)	0.77
Calendar Month 7	1.55 (0.90-2.68)	0.11
Calendar Month 8	1.24 (0.70-2.21)	0.46
Calendar Month 9	1.04 (0.57-1.90)	0.89
Calendar Month 10	1.21 (0.68-2.15)	0.52
Calendar Month 11	0.85 (0.45-1.60)	0.62
Calendar Month 12	1.00 (0.55-1.84)	0.99

Abbreviation: CI, confidence interval; ED, emergency department

* None of the indicator variables for the participating sites were statistically significant (all $P > 0.05$)

† Defined by heart disease, cancer, HIV infection, diabetes, stroke, or chronic pain.

‡ Defined by depression, bipolar disorder, anxiety disorder, or schizophrenia.

§ Quadratic term included in the model based on likelihood ratio test. β -coefficient for the linear term, 0.30; β -coefficient for the quadratic term, -0.06.

¶ Hazard ratio for a one-unit increase in the corresponding scale.

eTable 5. Cox proportional hazards model for the effect of time on suicide attempts within each study phase

Variables*	Hazards ratio (95% CI)	P-value
<i>Study phases</i>		
Phase 1 (Treatment as Usual)	0.91 (0.69-1.22)	0.54
Phase 2 (Universal Screening)	0.98 (0.38-2.55)	0.97
Phase 3 (Universal Screening + Intervention)	0.64 (0.26-1.58)	0.33

eTable 6. Cox proportional hazards model for the suicide composite

Variables*	Hazards ratio (95% CI)	P-value
<i>Study phases</i>		
Phase 1 (Treatment as Usual)	Reference	-
Phase 2 (Universal Screening)	0.98 (0.81-1.20)	0.74
Phase 3 (Universal Screening + Intervention)	0.78 (0.64-0.94)	0.01
<i>Covariates</i>		
<i>Age categories (quartiles)</i>		
18-25.9 years	Reference	-
26-36.9 years	1.17 (0.91-1.50)	0.05
37-46.9 years	1.45 (1.13-1.87)	0.004
≥47 years	1.58 (1.21-2.07)	<0.001
Female sex	1.19 (1.00-1.42)	0.07
Lives alone	0.96 (0.80-1.15)	0.86
Served in the military	0.95 (0.68-1.32)	0.55
Coexisting medical disorder†	1.22 (1.01-1.49)	0.03
Coexisting psychiatric disorder‡	1.59 (1.15-2.20)	0.002
Lifetime history of suicide attempt	1.42 (1.12-1.80)	0.02
Lifetime history of aborted attempt	1.29 (1.08-1.54)	0.002
Lifetime history of interrupted attempt	1.21 (1.01-1.45)	0.18
Lifetime history of non-suicidal self-injury	1.33 (1.12-1.59)	<0.001
Columbia Suicide Severity Rating Scale (linear term)§	1.04 (0.78-1.38)	0.77
Columbia Suicide Severity Rating Scale (quadratic term)§	0.99 (0.94-1.05)	0.86
ED visit for psychiatric problems within the past 6-months	1.11 (0.90-1.38)	0.44
Hospitalization for psychiatric problems within past 6-months	1.56 (1.24-1.97)	<0.001
Suicide attempt in past week	0.95 (0.79-1.15)	0.45
Current alcohol misuse	1.02 (0.86-1.22)	0.90
Current drug use	1.06 (0.89-1.26)	0.44
Psychological distress (Global Severity Index score)¶	1.00 (0.99-1.02)	0.66
Quality of life (SF-6D score)¶	0.98 (0.95-1.02)	0.29

Abbreviation: CI, confidence interval; ED, emergency department

* None of the indicator variables for the participating sites were statistically significant (all $P > 0.05$)

† Defined by heart disease, cancer, HIV infection, diabetes, stroke, or chronic pain.

‡ Defined by depression, bipolar disorder, anxiety disorder, or schizophrenia.

§ Quadratic term included in the model based on likelihood ratio test. β -coefficient for the linear term, 0.82; β -coefficient for the quadratic term, 0.79.

eTable 7. Negative binomial regression model for the suicide composite as a count variable

Variables*	Risk ratio (95% CI)	P-value
<i>Study phases</i>		
Phase 1 (Treatment as Usual)	Reference	-
Phase 2 (Screening Only)	0.97 (0.81-1.16)	0.74
Phase 3 (Intervention)	0.78 (0.65-0.93)	0.01
<i>Covariates</i>		
Age categories (quartiles)		
18-25.9 years	Reference	-
26-36.9 years	1.26 (1.00-1.58)	0.05
37-46.9 years	1.41 (1.12-1.78)	0.004
≥47 years	1.60 (1.25-2.04)	<0.001
Female sex	1.16 (0.99-1.37)	0.07
Lives alone	0.99 (0.83-1.16)	0.86
Served in the military	0.91 (0.67-1.24)	0.55
Coexisting medical disorder†	1.22 (1.02-1.46)	0.03
Coexisting psychiatric disorder‡	1.67 (1.22-2.29)	0.002
Lifetime history of suicide attempt	1.30 (1.05-1.62)	0.02
Lifetime history of aborted attempt	1.30 (1.10-1.53)	0.002
Lifetime history of interrupted attempt	1.12 (0.95-1.32)	0.18
Lifetime history of non-suicidal self-injury	1.32 (1.13-1.55)	<0.001
Columbia Suicide Severity Rating Scale (linear term)§	1.04 (0.80-1.34)	0.77
Columbia Suicide Severity Rating Scale (quadratic term)§	1.00 (0.95-1.05)	0.86
ED visit for psychiatric problems within the past 6-months	1.08 (0.89-1.30)	0.44
Hospitalization for psychiatric problems within past 6-months	1.41 (1.15-1.73)	<0.001
Suicide attempt in past week	1.07 (0.90-1.27)	0.45
Current alcohol misuse	1.01 (0.86-1.19)	0.90
Current drug use	0.94 (0.81-1.10)	0.44
Psychological distress (Global Severity Index score)¶	1.00 (0.99-1.02)	0.66
Quality of life (SF-6D score)¶	0.98 (0.95-1.02)	0.29

Abbreviation: ED, emergency department

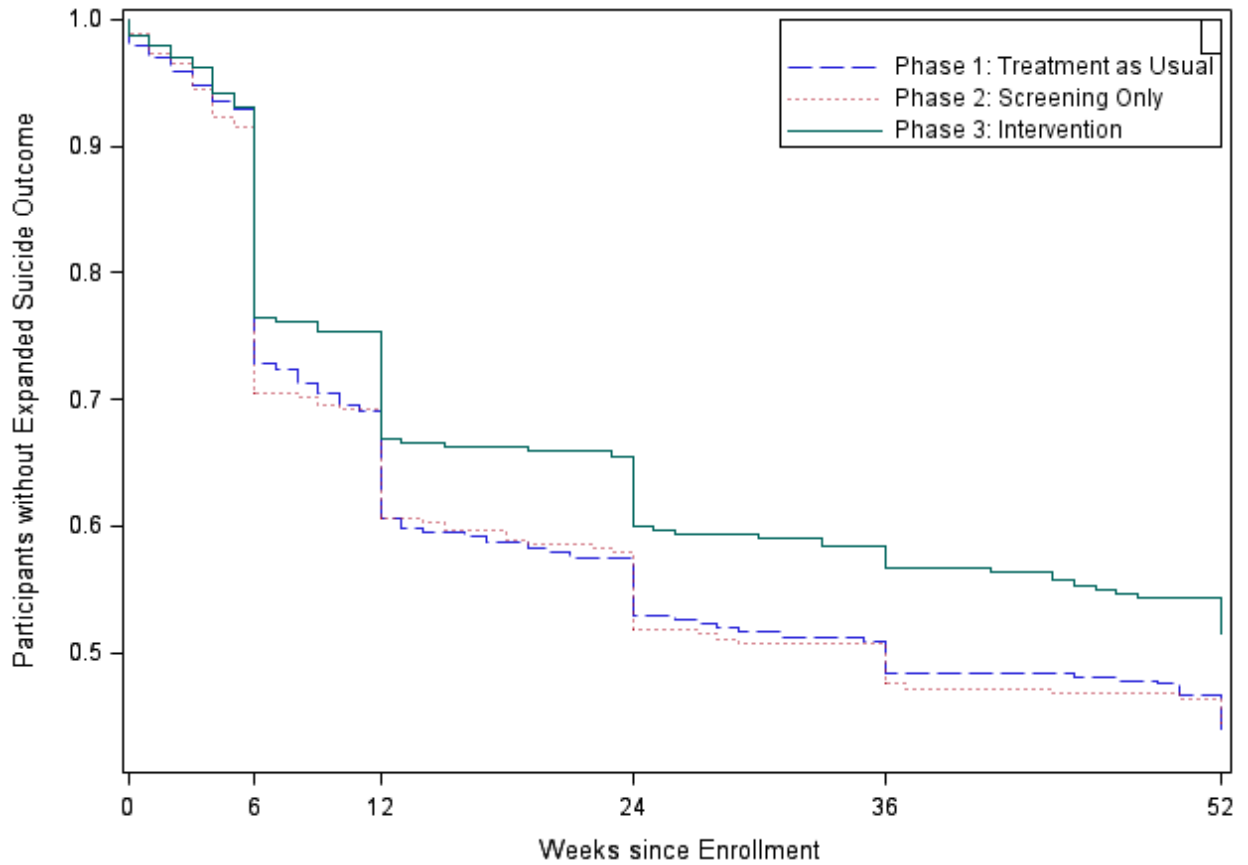
* None of the indicator variables for the participating sites were statistically significant (all P>0.05)

† Defined by heart disease, cancer, HIV infection, diabetes, stroke, or chronic pain.

‡ Defined by depression, bipolar disorder, anxiety disorder, or schizophrenia.

§ Quadratic term included in the model based on likelihood ratio test. β -coefficient for the linear term, 0.07; β -coefficient for the quadratic term, -0.01.
¶ Hazard ratio for a one-unit increase in the corresponding scale.

eFigure. Proportion of participants who remained suicide composite-free over time



Number of Participants at Risk

Phase 1	497	462	271		215		183		158
Phase 2	377	345	209		171		143		123
Phase 3	502	466	282		238		200		180

The Universal Screening phase (Phase 2) vs. the Treatment as Usual phase (Phase 1): $P=0.91$ by log-rank test. The Universal Screening + Intervention phase (Phase 3) vs. the Treatment as Usual phase (Phase 1): $P=0.03$ by log-rank test.