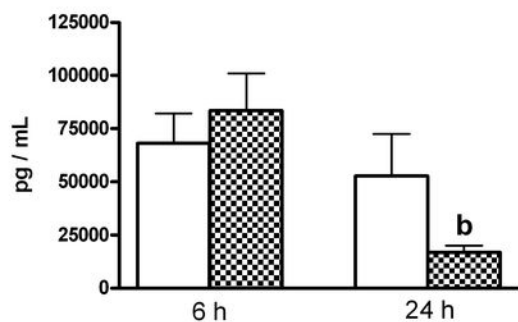
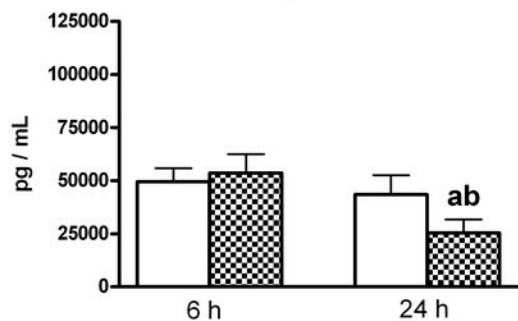
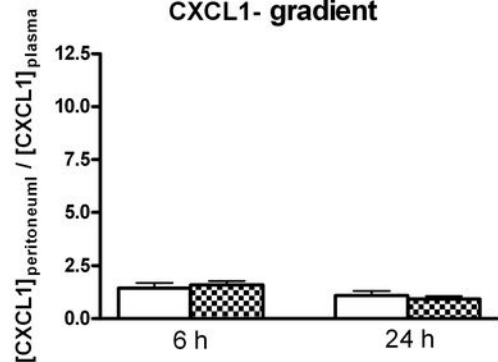
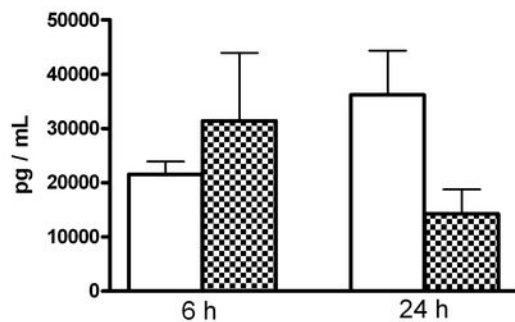
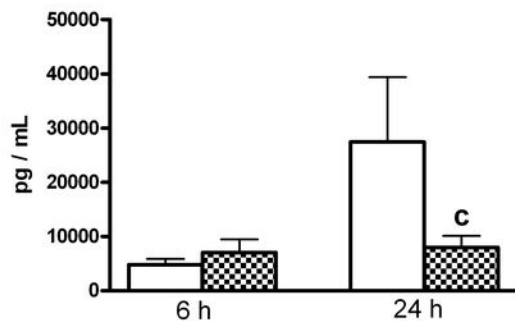
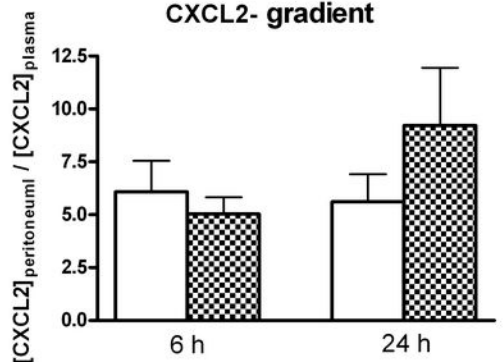


Supplementary figure legends

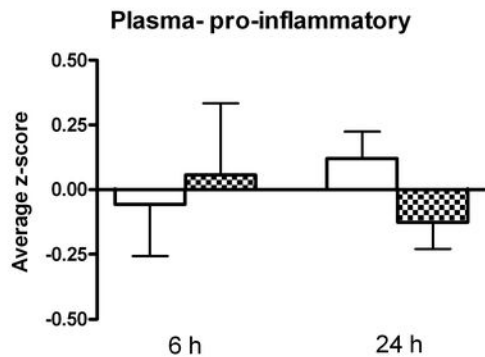
Supplementary Figure 1. The early treatment with chemokines did not result in changes of the peritoneal or plasma levels of CXCL2 and CXCL1 at 6 hours and by 24 hours mice that received them had even lower levels compared to those that did not. The peritoneal to plasma concentration gradients were not affected. Mice were injected i.p. with saline (200 μ L) or chemokines (500 ng CXCL2 + 50 ng CXCL1) immediately after closure of the peritoneal cavity at CLP. For panel D, at 6 hours n=10 for Saline and 10 for Chemokines; at 24 hours n=47 for Saline and 49 for Chemokines. For the rest of the panels, at 6 hours n=10 for Saline and 10 for Chemokines; at 24 hours n=20 for Saline and 20 for Chemokines. Results are shown as mean \pm standard error of the mean. $p < 0.05$ when compared to a- Saline at 6 hours; b- Chemokines at 6 hours; c- Saline at 24 hours.

Supplementary Figure 2. Chemokines treatment did not produce significant alterations in the levels of pro and anti-inflammatory mediators both locally (in the peritoneal cavity) and systemically (in plasma). Average z-scores for all the pro and anti-inflammatory mediators measured for each mouse were calculated as described in the Statistical analysis part of the Methods section. For panels A and B, at 6 hours n= 10 for Saline and 10 for Chemokines, while at 24 hours n= 47 for Saline and 49 for Chemokines. For panels C and D at 6 hours n= 10 for Saline and 10 for Chemokines, while at 24 hours n= 20 for Saline and 20 for Chemokines. Results are shown as mean \pm standard error of the mean.

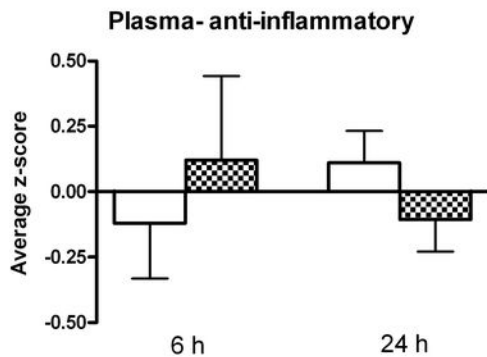
A.**CXCL1- peritoneum****B.****CXCL1- plasma****C.****CXCL1- gradient****D.****CXCL2- peritoneum****E.****CXCL2- plasma****F.****CXCL2- gradient**

□ Saline ▣ Chemokines

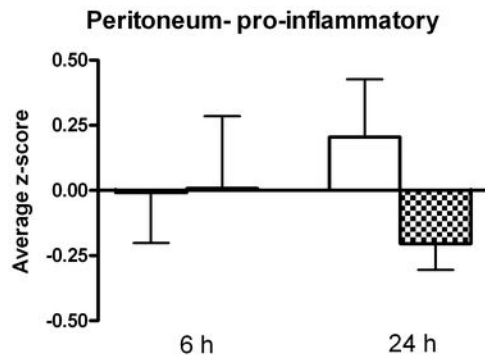
A.



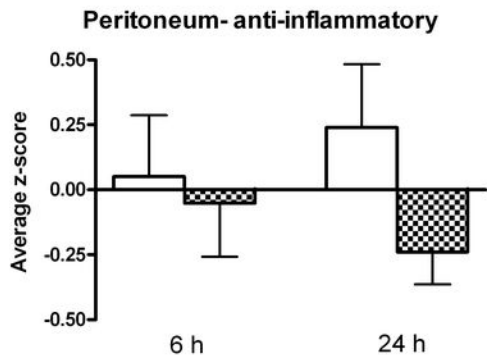
B.



C.



D.



□ Saline ▣ Chemokines

Supplementary Table I. Cytokine concentrations in plasma at 6 and 24 hours post-CLP¹.

Cytokines		Plasma (ng/mL)			
		6h		24h	
		Live-P	Die-P	Live-P	Die-P
Pro-inflammatory	IL-1 β	1.2 \pm 0.2	1.5 \pm 0.3	1.1 \pm 0.1	2.4 \pm 0.2 ^{abc}
	IL-2	0.38 \pm 0.2	0.53 \pm 0.17	0.26 \pm 0.03	0.5 \pm 0.06
	IL-6	5.0 \pm 0.8	19.7 \pm 4.4 ^{ac}	0.5 \pm 0.1	39.4 \pm 8.0 ^{abc}
	IL-12	0.5 \pm 0.1	5.5 \pm 4.9	0.6 \pm 0.1	1.3 \pm 0.2
	IL-17	0.1 \pm 0.02	1.07 \pm 0.94	0.14 \pm 0.02	0.32 \pm 0.04
	IFN γ	0.4 \pm 0.2	0.6 \pm 0.2	0.5 \pm 0.1	1.6 \pm 0.2 ^{abc}
	CCL3 (MIP-1 α)	3.5 \pm 0.1	3.9 \pm 0.4	2.7 \pm 0.3 ^{ab}	3.4 \pm 0.7
	CCL2 (MCP-1)	15.5 \pm 2.1	70.0 \pm 39.1 ^c	14.3 \pm 1.9	19.0 \pm 1.3
	TNF α	0.07 \pm 0.01	0.08 \pm 0.01	0.04 \pm 0.01	0.16 \pm 0.02 ^{ac}
	ICAM-1	9.2 \pm 0.9	8.4 \pm 0.9	3.6 \pm 0.3 ^{ab}	5.4 \pm 0.5 ^{abc}
Anti-inflammatory	IL-1ra	4.6 \pm 0.9	6.9 \pm 1.3 ^c	2.9 \pm 0.3	11.3 \pm 1.9 ^{abc}
	IL-4	0.8 \pm 0.1 ^c	1.2 \pm 0.1 ^{ac}	0.5 \pm 0.1	0.9 \pm 0.1 ^c
	IL-10	1.5 \pm 0.1	3.7 \pm 1.1	1.3 \pm 0.2 ^b	6.2 \pm 1.0 ^{abc}
	TNF-srI	2.1 \pm 0.2	2.9 \pm 0.4 ^c	1.2 \pm 0.1	5.6 \pm 0.7 ^{abc}
	TNF-srII	1.3 \pm 0.1 ^c	1.5 \pm 0.2 ^c	0.4 \pm 0.1	1.4 \pm 0.2 ^c

¹ Concentrations were measured by microarray immunoassay (at 6 hours n=9 for Live-P and 11 for Die-P; at 24 hours n=29 for Live-P and 14 for Die-P). Results are shown as mean \pm standard error of the mean. p<0.05 when compared to a- Live-P at 6 hours; b- Die-P at 6 hours; c- Live-P at 24 hours.

Supplementary Table II. Cytokine concentrations in plasma at 6 and 24 hours post-CLP and saline or chemokine injection¹.

Cytokines		Plasma (ng/mL)			
		6h		24h	
		Saline	Chemokines	Saline	Chemokines
Pro-inflammatory	IL-1 β	1.7 \pm 0.4	2.1 \pm 0.4	1.9 \pm 0.1	1.7 \pm 0.1
	IL-2	0.9 \pm 0.3	1.1 \pm 0.3	0.8 \pm 0.1	0.8 \pm 0.1
	IL-6	15.0 \pm 3.1	49.5 \pm 36.7	18.3 \pm 4.4	12.6 \pm 4.2
	IL-12	0.7 \pm 0.1	0.8 \pm 0.1	1.0 \pm 0.1	0.8 \pm 0.1
	IL-17	0.17 \pm 0.03	0.16 \pm 0.03	0.26 \pm 0.02	0.22 \pm 0.02
	IFN γ	0.7 \pm 0.2	0.7 \pm 0.1	1.4 \pm 0.2	1.3 \pm 0.2
	CCL3 (MIP-1 α)	4.1 \pm 0.6	4.5 \pm 0.7	3.2 \pm 0.4	2.9 \pm 0.4 ^b
	CCL2 (MCP-1)	62.0 \pm 30.9	112.4 \pm 57.2	16.0 \pm 0.8	14.2 \pm 0.7 ^b
	TNF α	0.09 \pm 0.02	0.1 \pm 0.02	0.11 \pm 0.01	0.09 \pm 0.01
	ICAM-1	8.0 \pm 0.9	5.8 \pm 0.5	7.4 \pm 0.6	6.6 \pm 0.5
Anti-inflammatory	IL-1ra	8.2 \pm 1.7	10.1 \pm 1.7	10.6 \pm 1.7	8.4 \pm 1.6
	IL-4	1.2 \pm 0.2	1.3 \pm 0.2	0.9 \pm 0.1	0.8 \pm 0.1
	IL-10	2.9 \pm 1.0	4.9 \pm 2.2	4.6 \pm 0.8	4.1 \pm 0.9
	TNF-srI	2.1 \pm 0.1	2.7 \pm 0.5	3.7 \pm 0.5	2.8 \pm 0.4
	TNF-srII	1.6 \pm 0.3	1.5 \pm 0.3	1.0 \pm 0.1	0.8 \pm 0.1 ^{ab}

¹ Concentrations were measured by microarray immunoassay (at 6 hours n=10 for Saline and 10 for Chemokines; at 24 hours n=47 for Saline and 49 for Chemokines). Results are shown as mean \pm standard error of the mean. p<0.05 when compared to a- Saline at 6 hours; b- Chemokines at 6 hours.

Supplementary Table III. Cytokine concentrations in the peritoneum at 6 and 24 hours post-CLP and saline or chemokine injection¹.

Cytokines		Peritoneal cavity (ng/mL)			
		6h		24h	
		Saline	Chemokines	Saline	Chemokines
Pro-inflammatory	IL-1 β	1.9 \pm 0.3	1.8 \pm 0.3	2.2 \pm 0.4	1.7 \pm 0.2
	IL-2	0.08 \pm 0.03	0.18 \pm 0.06	0.63 \pm 0.07 ^{ab}	0.73 \pm 0.12 ^{ab}
	IL-6	140.4 \pm 55.7	118.9 \pm 43.2	27.3 \pm 6.8 ^{ab}	14.3 \pm 3.6 ^{ab}
	IL-12	0.7 \pm 0.1	0.6 \pm 0.1	0.4 \pm 0.2	0.6 \pm 0.1
	IL-17	0.7 \pm 0.1	0.5 \pm 0.1	0.4 \pm 0.1 ^a	0.3 \pm 0.1 ^{ab}
	IFN γ	1.5 \pm 0.4	1.7 \pm 0.3	1.8 \pm 0.3	1.0 \pm 0.2
	CCL3 (MIP-1 α)	10.4 \pm 1.6	11.9 \pm 2.6	24.4 \pm 6.5	12.8 \pm 2.2
	CCL2 (MCP-1)	91.3 \pm 20.1	82.5 \pm 21.3	13.0 \pm 1.2 ^{ab}	12.9 \pm 1.3 ^{ab}
	TNF α	0.14 \pm 0.02	0.14 \pm 0.04	0.2 \pm 0.04	0.13 \pm 0.02
	ICAM-1	5.4 \pm 0.6	4.2 \pm 0.9	8.3 \pm 1.3	6.6 \pm 0.6
Anti-inflammatory	IL-1ra	13.5 \pm 2.7	13.9 \pm 3.2	29.7 \pm 4.8	20.0 \pm 4.7
	IL-4	2.6 \pm 0.6	1.8 \pm 0.4	1.0 \pm 0.1 ^{ab}	0.8 \pm 0.1 ^{ab}
	IL-10	6.1 \pm 1.1	10.6 \pm 4.0	13.4 \pm 2.9	5.7 \pm 1.4
	TNF-srI	35.8 \pm 7.8	28.5 \pm 6.1	4.0 \pm 0.8 ^{ab}	2.8 \pm 0.3 ^{ab}
	TNF-srII	424.4 \pm 116.8	357.2 \pm 136.5	19.5 \pm 3.1 ^{ab}	14.7 \pm 1.6 ^{ab}

¹ Concentrations were calculated as described in the Methods section (at 6 hours n=10 for

Saline and 10 for Chemokines; at 24 hours n=20 for Saline and 20 for Chemokines).

Results are shown as mean \pm standard error of the mean. p<0.05 when compared to a-

Saline at 6 hours; b- Chemokines at 6 hours.