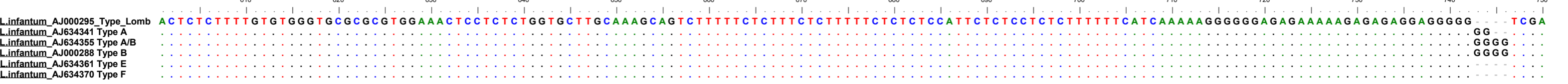
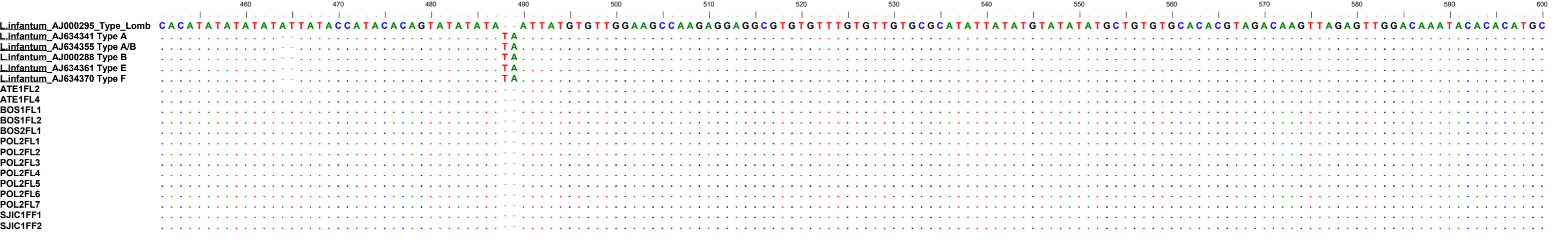
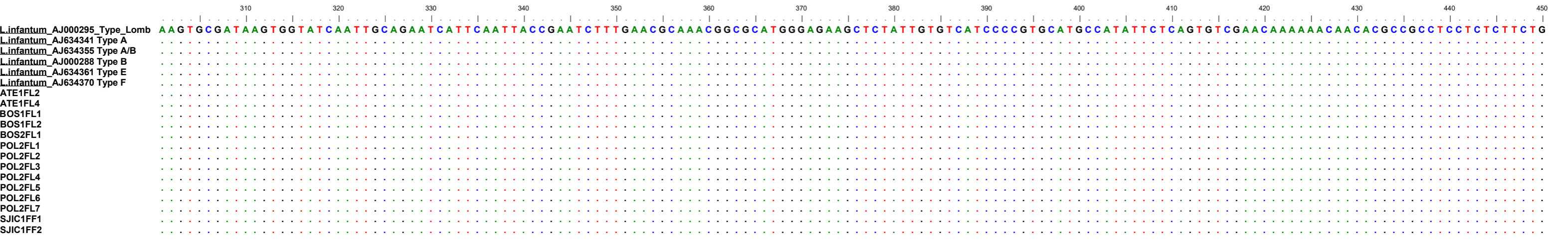
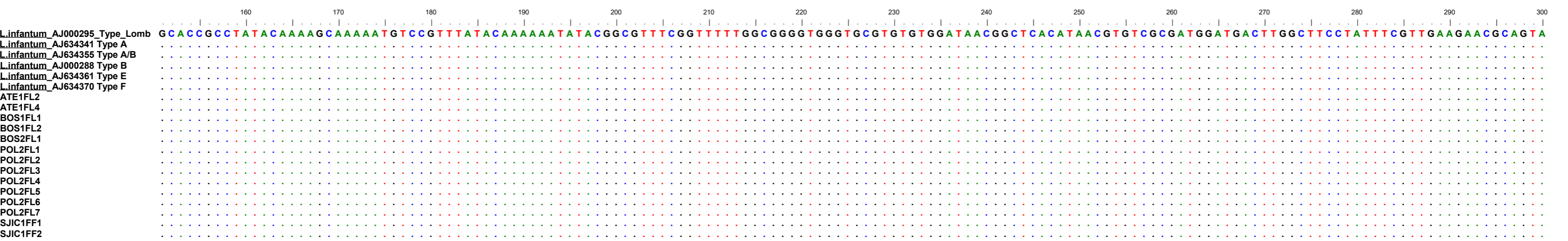
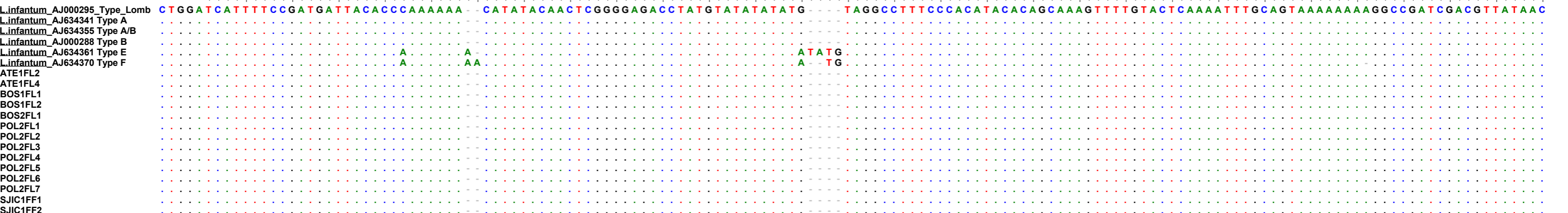
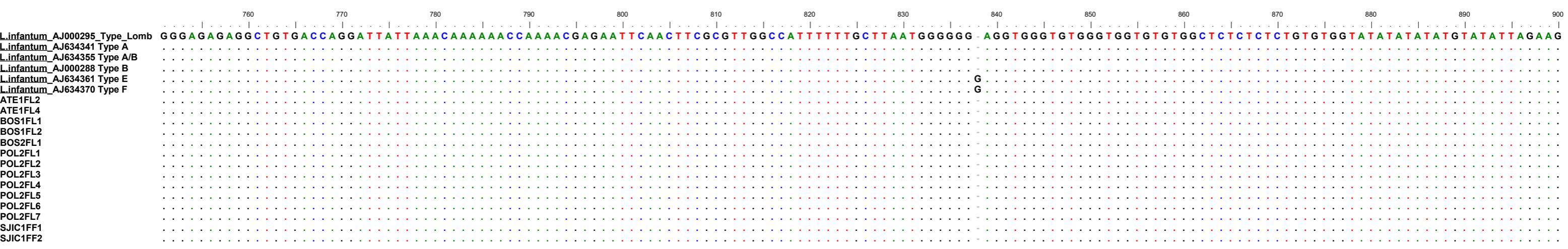
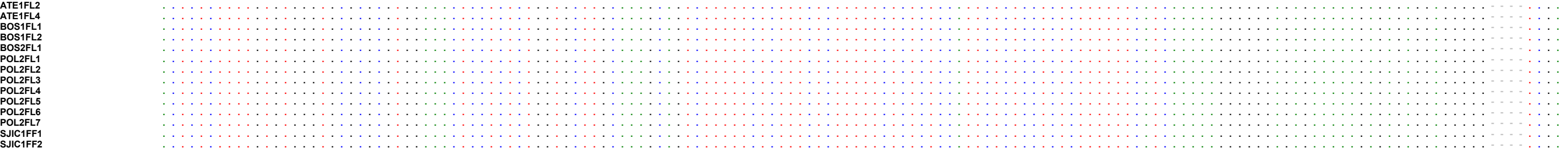
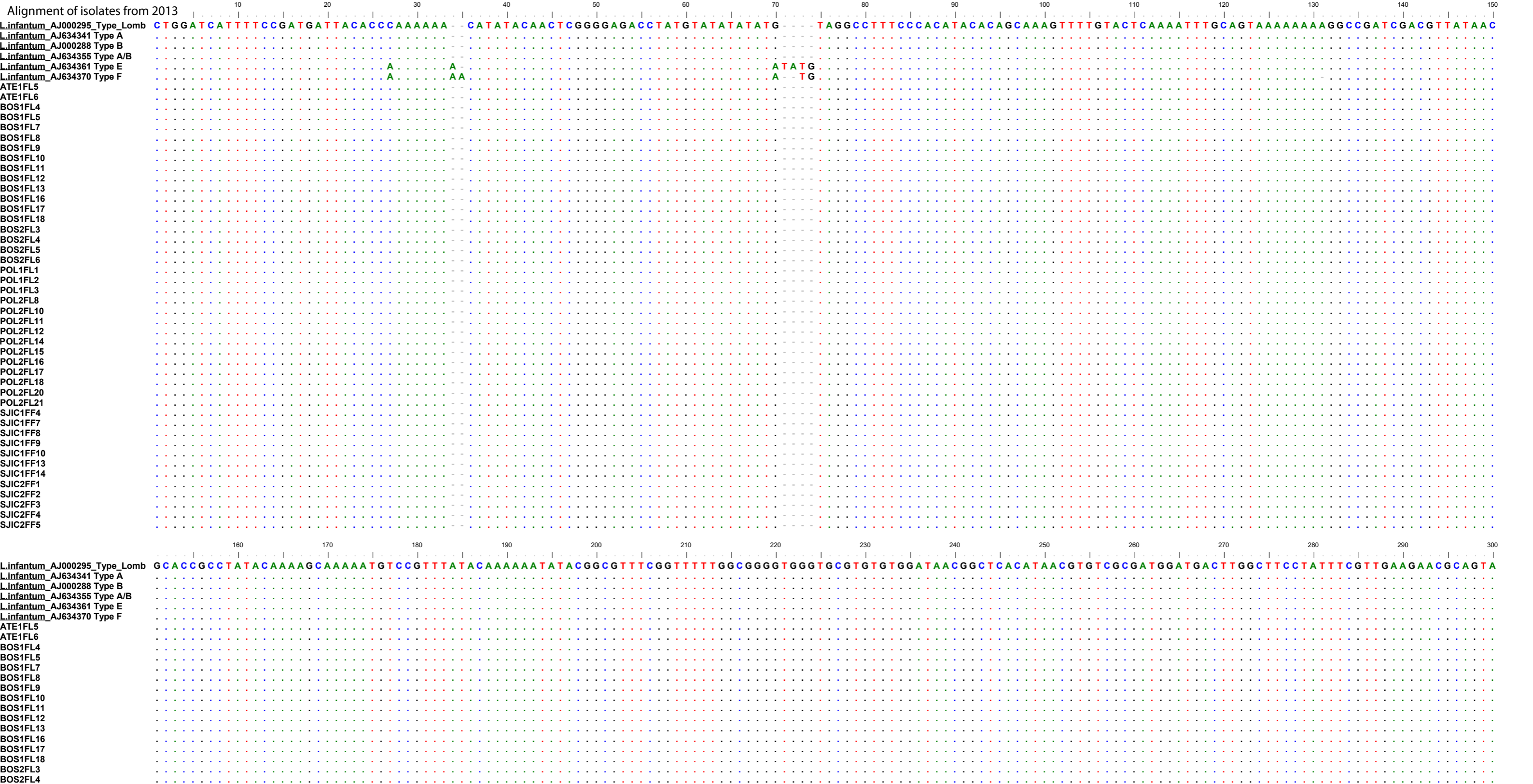
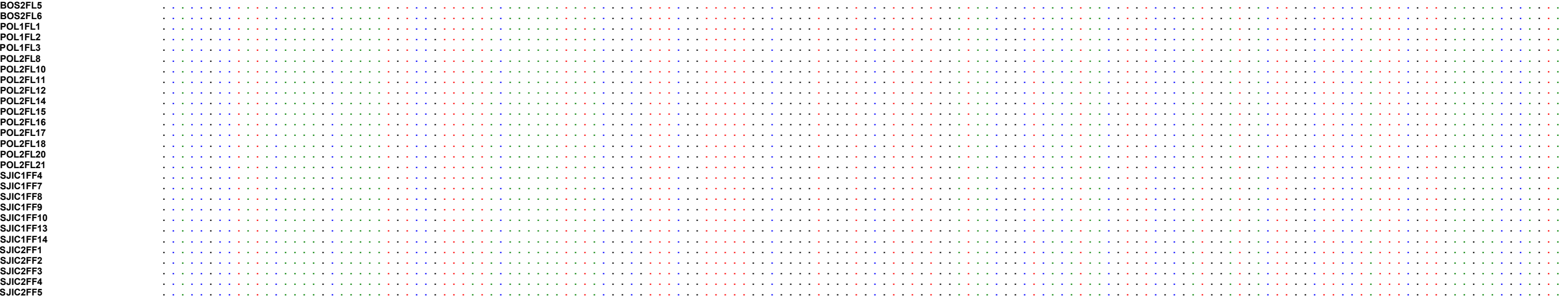


Alignment of isolates from 2012

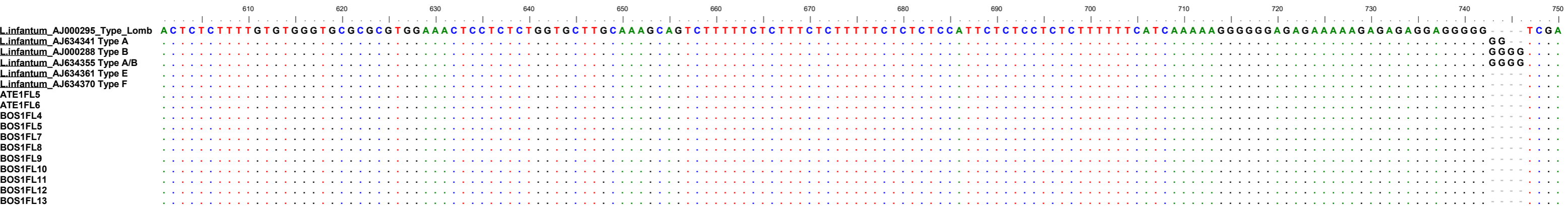


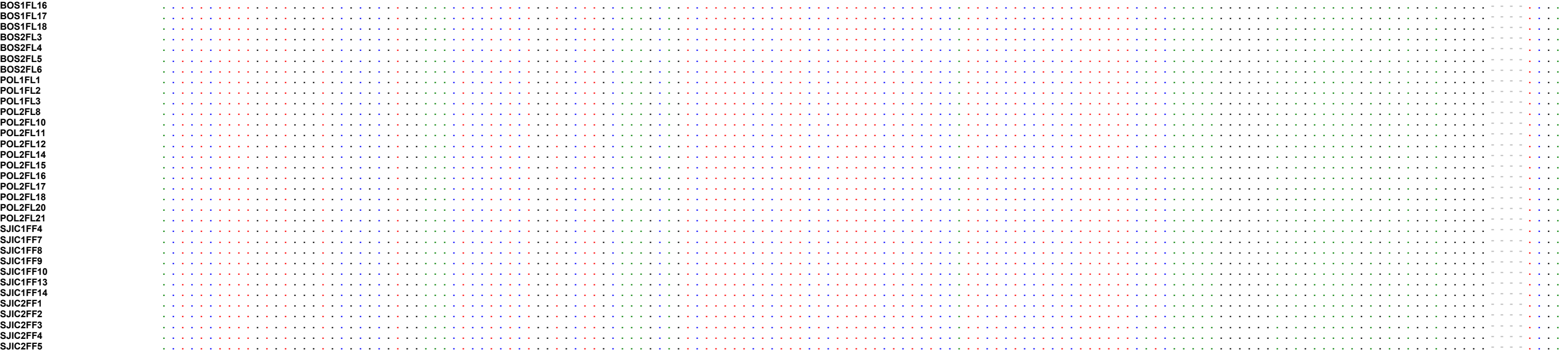






SJIC2FF2
SJIC2FF3
SJIC2FF4
SJIC2FF5





760 770 780 790 800 810 820 830 840 850 860 870 880 890 900

*L. infantum*_AJ000295_Type_Lomb GGGAGAGAGGCTGTGACCAGGATTTATTAAACAAAAACCAAAACGAGAAATCAACTTCGCGTTGGCCA TTTTTTGCTTAATGGGGGG AGGTGGGTGTGGGTGGTGTGTGGCTCTCTCTCTGTGTGGTATATATATATGTATATTAGAAG

*L. infantum*_AJ634341_Type A

*L. infantum*_AJ000288_Type B

*L. infantum*_AJ634355_Type A/B

*L. infantum*_AJ634361_Type E

*L. infantum*_AJ634370_Type F

ATE1FL5

ATE1FL6

BOS1FL4

BOS1FL5

BOS1FL7

BOS1FL8

BOS1FL9

BOS1FL10

BOS1FL11

BOS1FL12

BOS1FL13

BOS1FL16

BOS1FL17

BOS1FL18

BOS2FL3

BOS2FL4

BOS2FL5

BOS2FL6

POL1FL1

POL1FL2

POL1FL3

POL2FL8

POL2FL10

POL2FL11

POL2FL12

POL2FL14

POL2FL15

POL2FL16

POL2FL17

POL2FL18

POL2FL20

POL2FL21

SJIC1FF4

SJIC1FF7

SJIC1FF8

SJIC1FF10
 SJIC1FF13
 SJIC1FF14
 SJIC2FF1
 SJIC2FF2
 SJIC2FF3
 SJIC2FF4
 SJIC2FF5

910 920 930 940 950 960 970 980 990 1000 1010 1020 1030 1040 1050

L.infantum_AJ000295_Type_Lomb TAGGTTGTGTGTGTGTGTATGTGTTTTACACATATATATATCCGCGCCCTCACTCTCTCATATATAATTTATATGTACGCACAGAGAAAAAAGAGAGGGCGCTCTCTTTTCCCCCACCCCC - GACAACCNNNTGTTTACAGACCTGAGTGT
 L.infantum_AJ634341 Type A
 L.infantum_AJ000288 Type B
 L.infantum_AJ634355 Type A/B
 L.infantum_AJ634361 Type E C
 L.infantum_AJ634370 Type F C
 ATE1FL5
 ATE1FL6
 BOS1FL4
 BOS1FL5
 BOS1FL7
 BOS1FL8
 BOS1FL9
 BOS1FL10
 BOS1FL11
 BOS1FL12
 BOS1FL13
 BOS1FL16
 BOS1FL17
 BOS1FL18
 BOS2FL3
 BOS2FL4
 BOS2FL5
 BOS2FL6
 POL1FL1
 POL1FL2
 POL1FL3
 POL2FL8
 POL2FL10
 POL2FL11
 POL2FL12
 POL2FL14
 POL2FL15
 POL2FL16
 POL2FL17
 POL2FL18
 POL2FL20
 POL2FL21
 SJIC1FF4
 SJIC1FF7
 SJIC1FF8
 SJIC1FF9
 SJIC1FF10
 SJIC1FF13
 SJIC1FF14
 SJIC2FF1
 SJIC2FF2
 SJIC2FF3
 SJIC2FF4
 SJIC2FF5

Alignment of isolates from 2014

