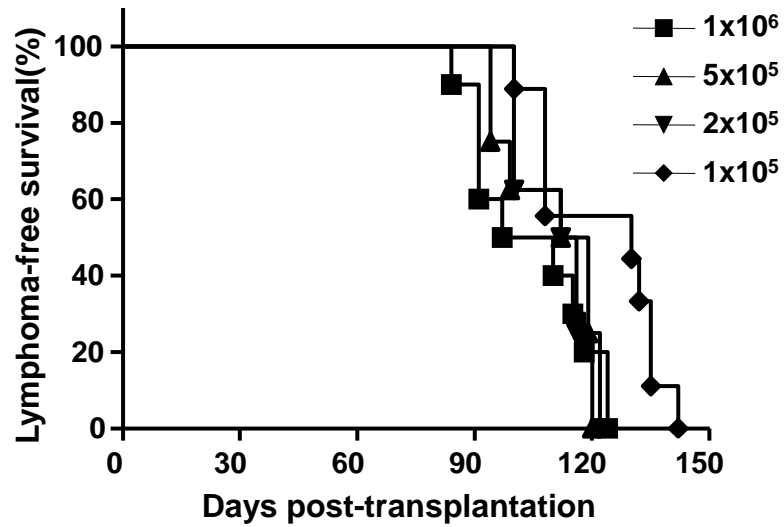


S1 Fig



**S1 Fig. Kaplan-Meier survival curves of the recipients of transplantation with different numbers of MSH2<sup>-/-</sup> BM cells.** Indicated numbers of BM cells from 6-8 weeks old MSH2<sup>-/-</sup> mice (n=3) were transplanted into lethally irradiated BoyJ mice (n=10 per group). The development of thymic lymphomas in the recipients was monitored.