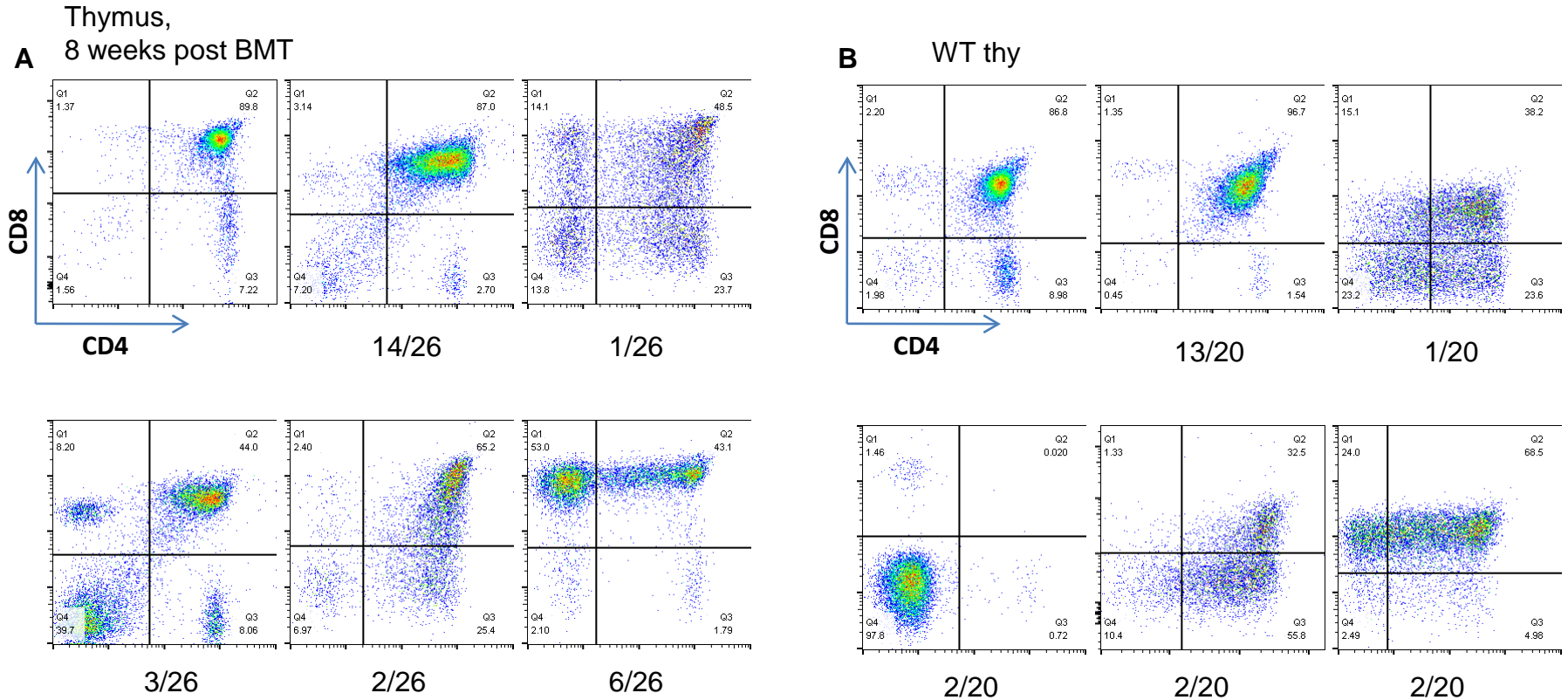


S2 Fig



S2 Fig. Lymphoma Characterization in the recipients of MSH2^{-/-} BMT (A) and MSH2^{-/-} Mice (B). A total of 26 thymic lymphomas in the recipients of MSH2^{-/-} BMT (A) and 20 lymphomas in MSH2^{-/-} mice (B) were analyzed by flow cytometry using CD4 and CD8 antibodies. The numbers under each graph indicate the proportion of lymphomas showing similar CD4/CD8 expression profiles. The upper left graph in each panel is representative of a normal thymus from MSH2^{-/-} BMT (A) or WT mouse (B). Note: the gating may not be based on a singular standard, since this is a long-turn experiments, the samples were analyzed at different times.