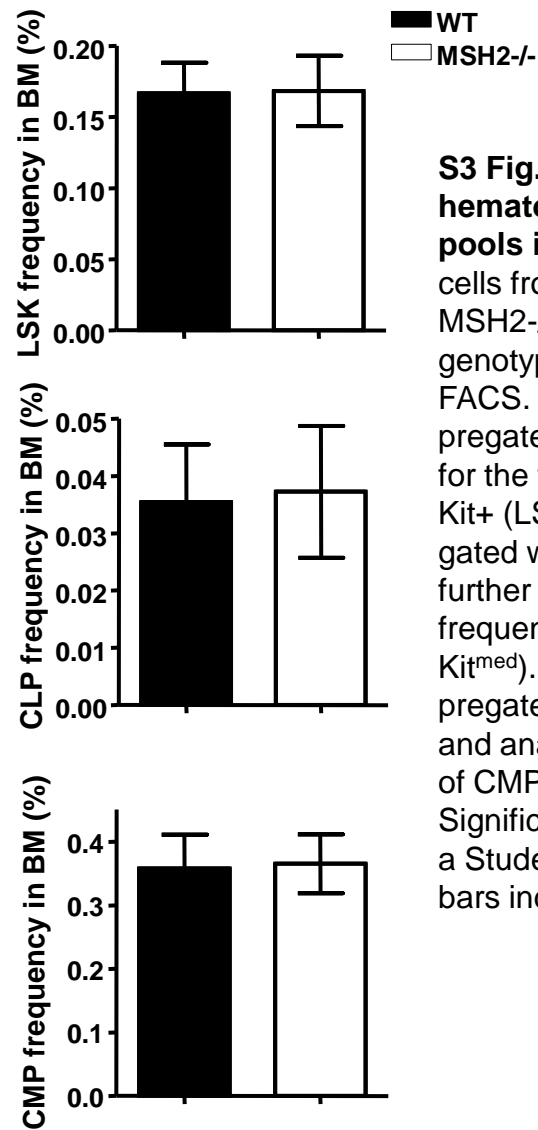
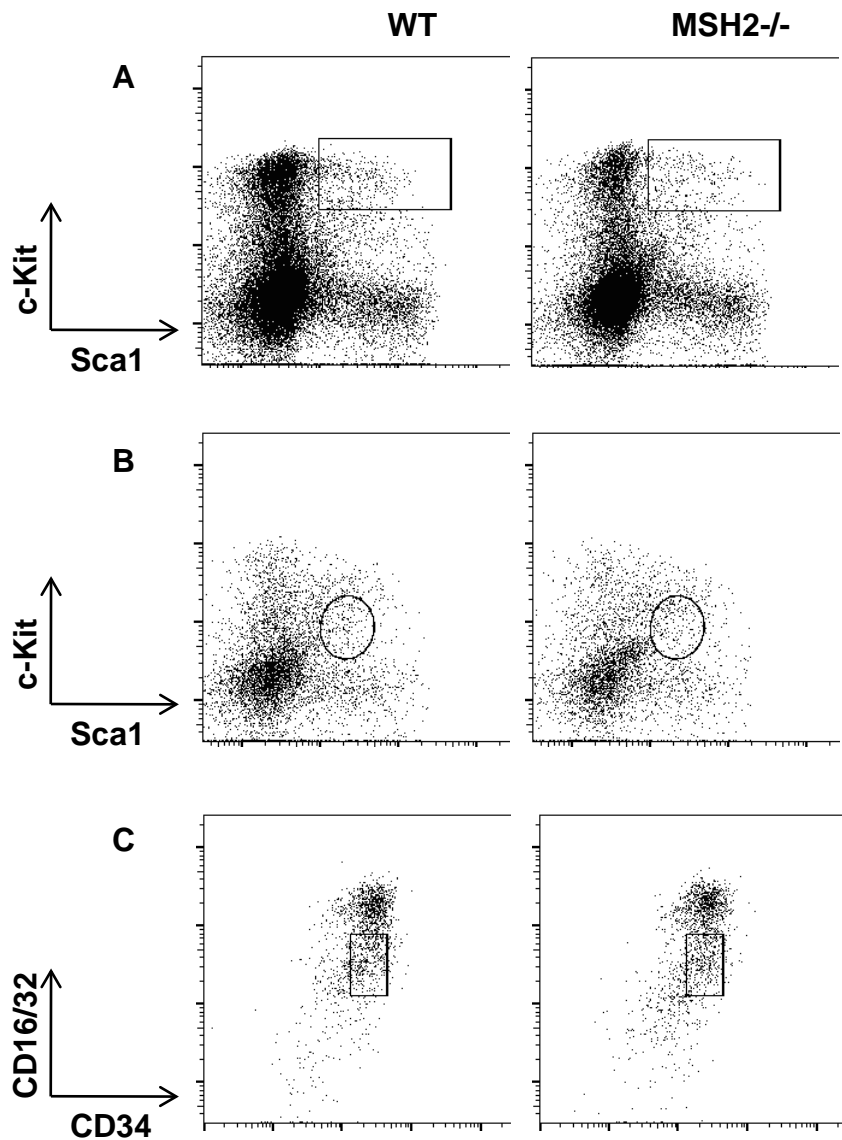


S3 Fig



S3 Fig. Characterization of hematopoietic progenitor pools in MSH2-/- mice. BM cells from age-matched WT and MSH2-/- mice (n=6 each genotype) were analyzed by FACS. (A). BM cells were pregated for Lin-, and analyzed for the frequencies of Sca1+, c-Kit+ (LSK). (B). BM cells were gated with Lin-, CD127+, and further analyzed for the frequency of CLP (Sca1^{med}, c-Kit^{med}). (C). BM cells were pregated for Lin-, Sca1-, c-Kit+, and analyzed for the frequencies of CMP (CD34^{+/low}CD16/32^{int}). Significance was determined by a Student's 2-tailed t test. Error bars indicate the SD.