

Serial measurements of circulating plasma cells before and after induction therapy have an independent prognostic impact in patients with multiple myeloma undergoing upfront autologous transplantation

Rajshekhar Chakraborty,^{1,2} Eli Muchtar,¹ Shaji K. Kumar,¹ Dragan Jevremovic,³ Francis K. Buadi,¹ David Dingli,¹ Angela Dispenzieri,¹ Suzanne R. Hayman,¹ William J. Hogan,¹ Prashant Kapoor,¹ Martha Q. Lacy,¹ Nelson Leung¹ and Morie A. Gertz¹

¹Division of Hematology, Mayo Clinic, Rochester; ²Hospitalist Services, Essentia Health-St. Joseph's Medical Center, Brainerd, and ³Department of Laboratory Medicine and Pathology, Division of Hematopathology, Mayo Clinic, Rochester, MN, USA

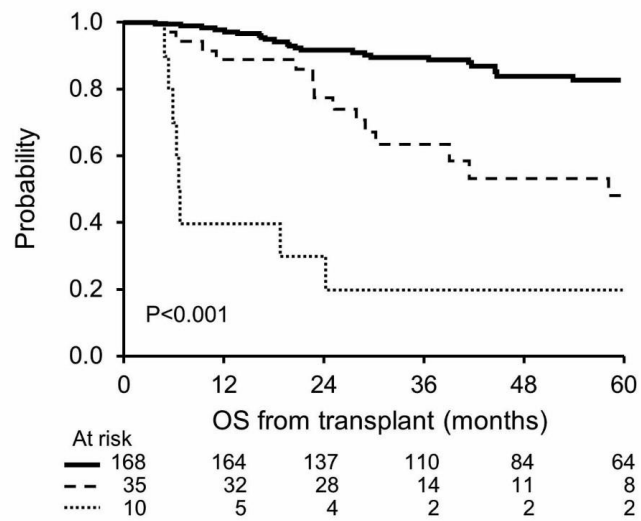
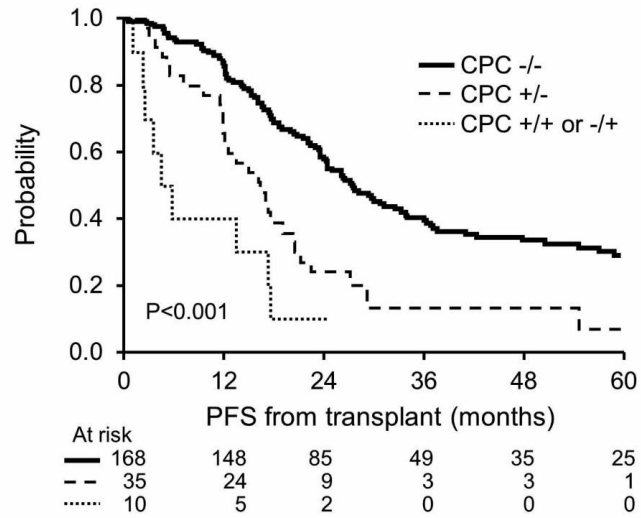
©2017 Ferrata Storti Foundation. This is an open-access paper. doi:10.3324/haematol.2017.166629

Received: February 12, 2017.

Accepted: April 28, 2017.

Pre-published: May 4, 2017.

Correspondence: gertz.morie@mayo.edu



Supplementary appendix I. Kaplan-Meier curves for PFS and OS stratified by circulating plasma cells (CPCs) before and after (day#100) autologous stem cell transplantation.