

Supporting Information: Fig. S4

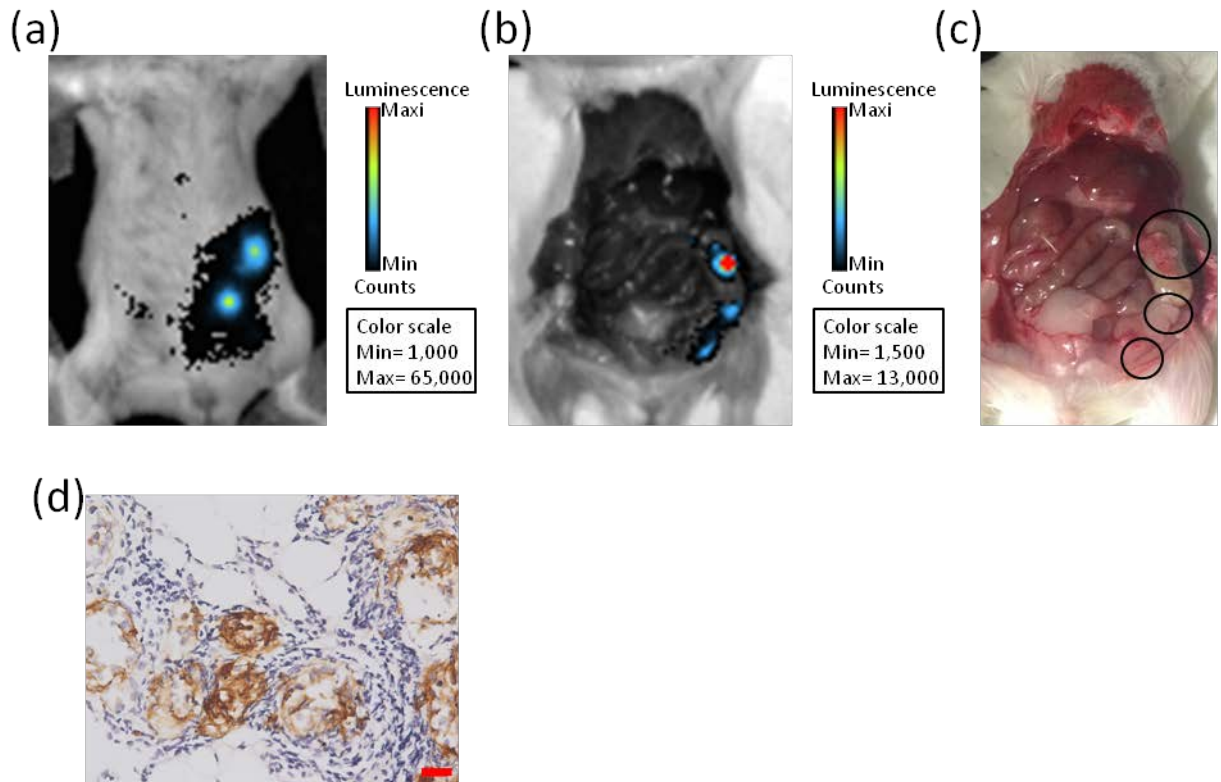


Fig. S4. Establishment of the PMGC xenograft mouse model. (a) Representative bioluminescence images of the PMGC in the xenograft mouse models captured 10 min after injection with luciferin with the abdomen closed. The color scale indicates the luminescence intensity per pixel. Bioluminescence (b) and visual (c) images of PMGC in the same mice of (a) captured 20 min after injection with luciferin with the abdomen closed. Black circles in (c) highlight visible tumor lesions, which correspond well to the luminescence signals in (b). (d) HER2 immunohistochemical staining of PMGC dissected from the xenograft mouse model. Scale bar = 20 μm .