

Extended Data Fig. 1a:

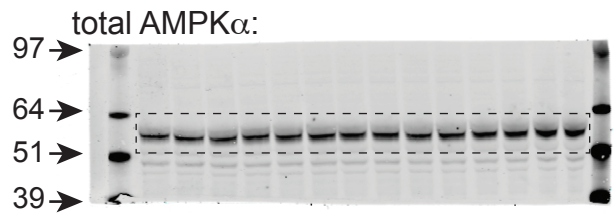
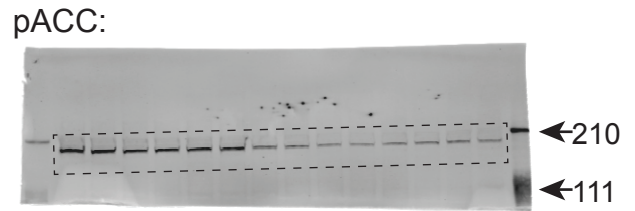


Fig. 2a:

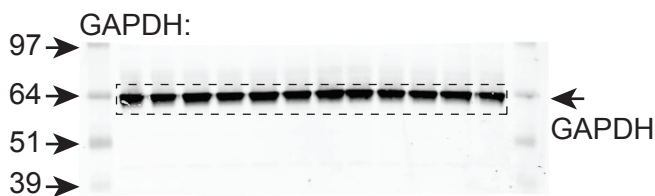
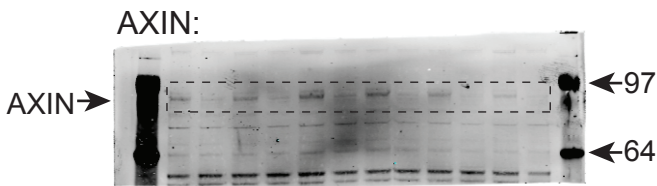
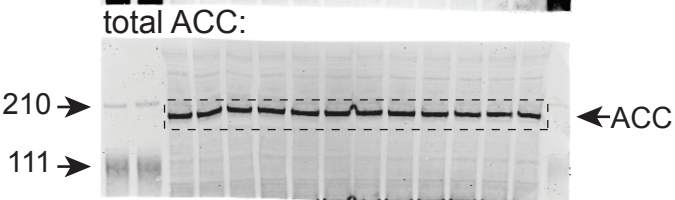
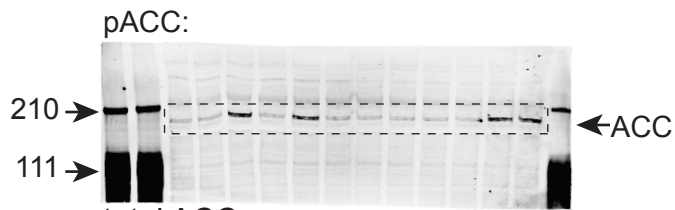


Fig. 2b:

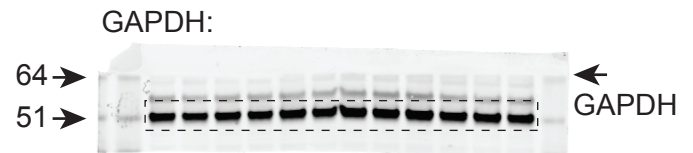
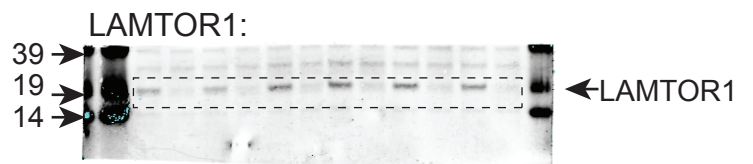
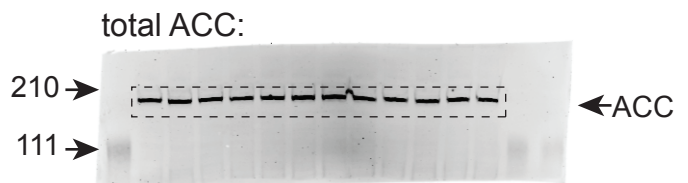
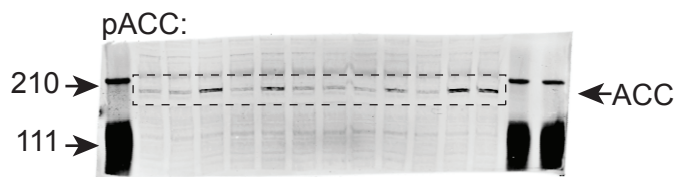
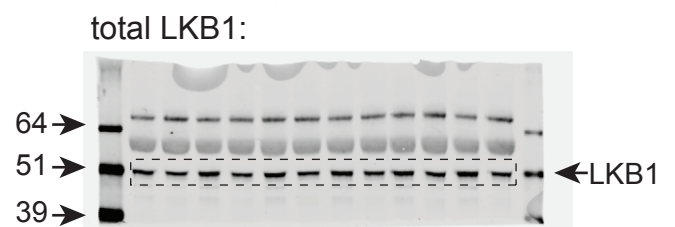
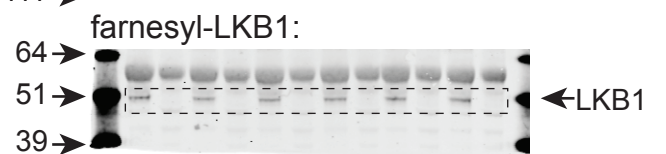
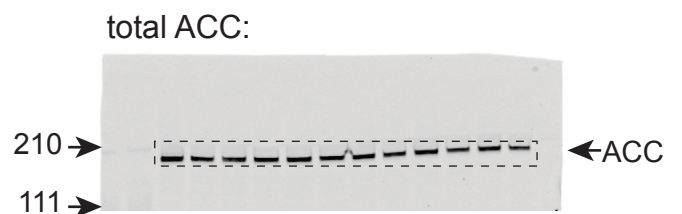
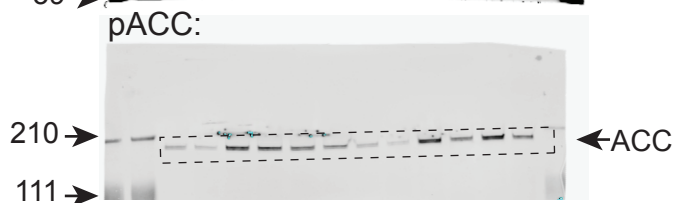
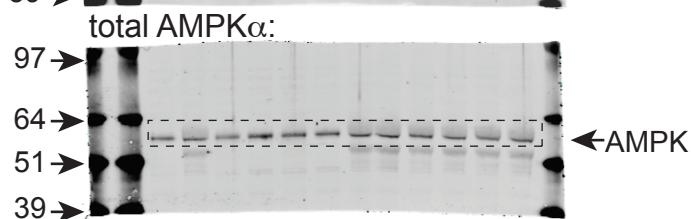
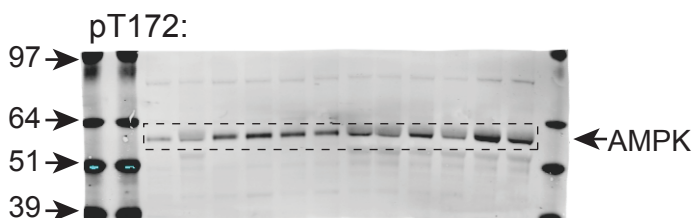
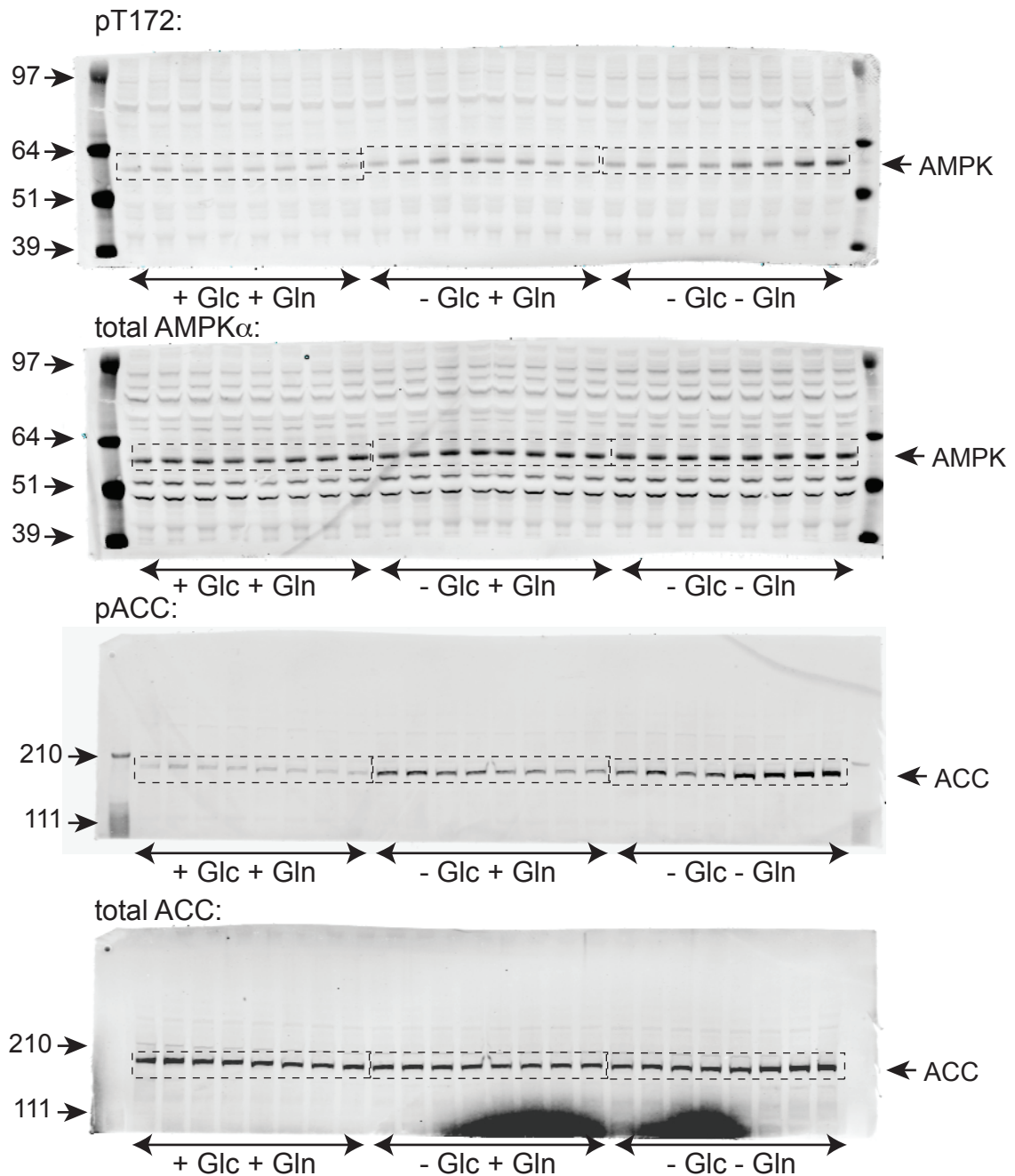


Fig. 2e:



Extended Data Fig. 1g:



Note that to ensure uniform detection, all time points and conditions were run on single gels with 24 wells, which were then cropped in three sections of 8 wells each as shown, to generate Extended Data Fig. 1g.

The SeeBlue® Plus2 Pre-stained Protein Standard, Cat. LC5925, from ThermoFisher Scientific, was used as the protein marker.

Blots, as shown below, were cut into slices before incubation with primary antibodies. The Pierce™ Prestained Protein MW Marker, Cat. 26612, from ThermoFisher Scientific, was used as the protein marker.

Fig. 3a

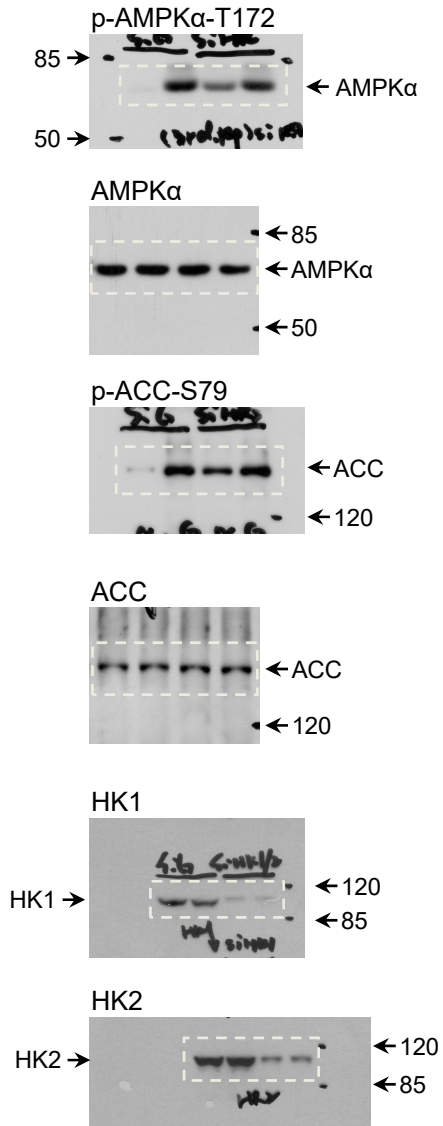


Fig. 3b

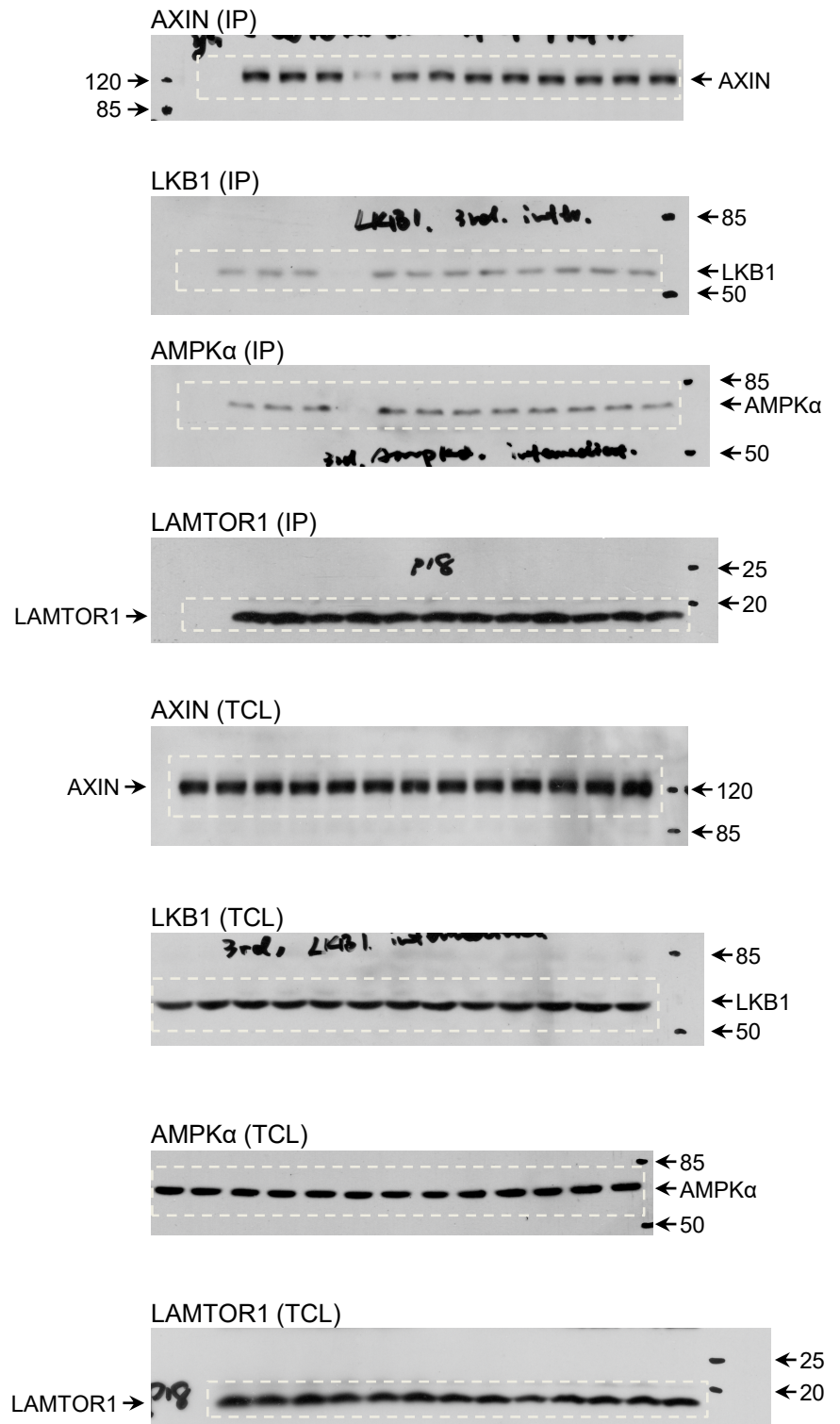


Fig. 3c

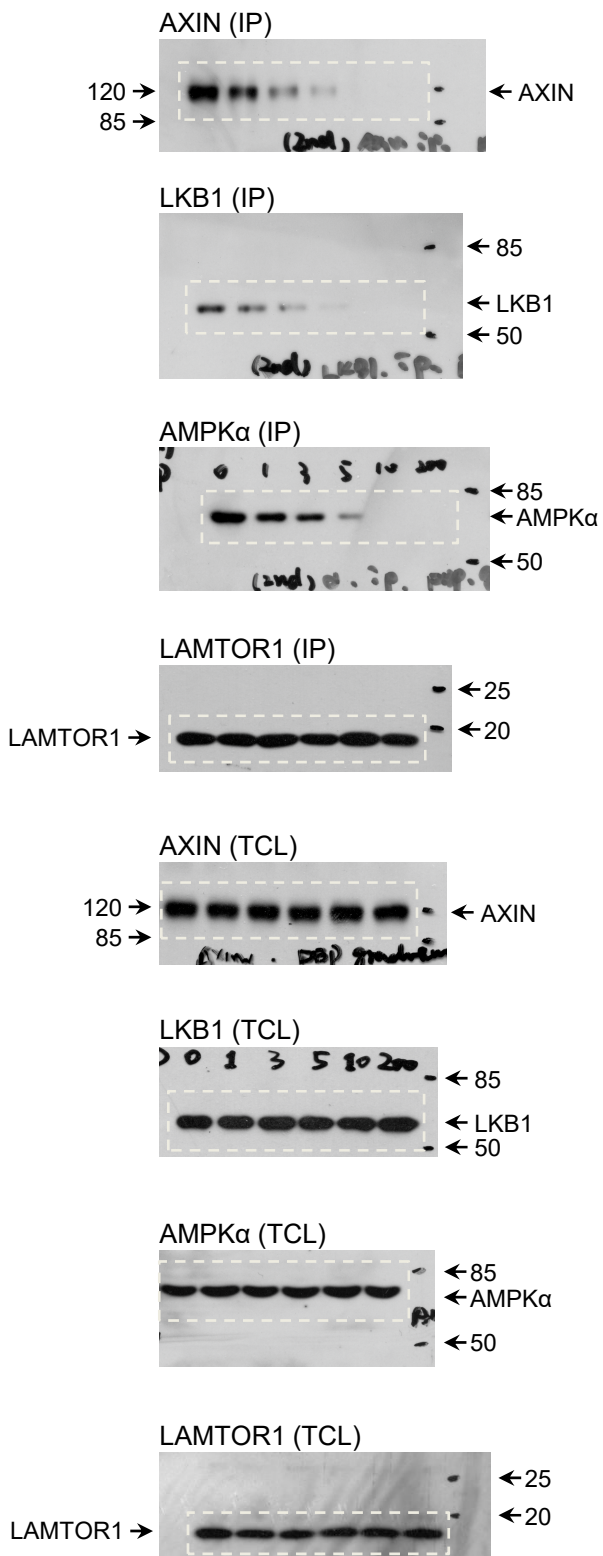


Fig. 3d

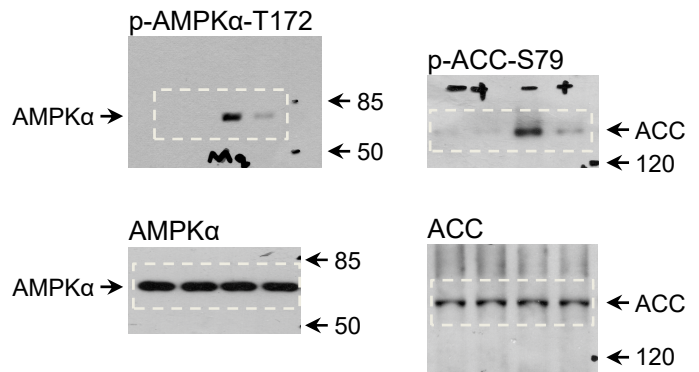


Fig. 4a

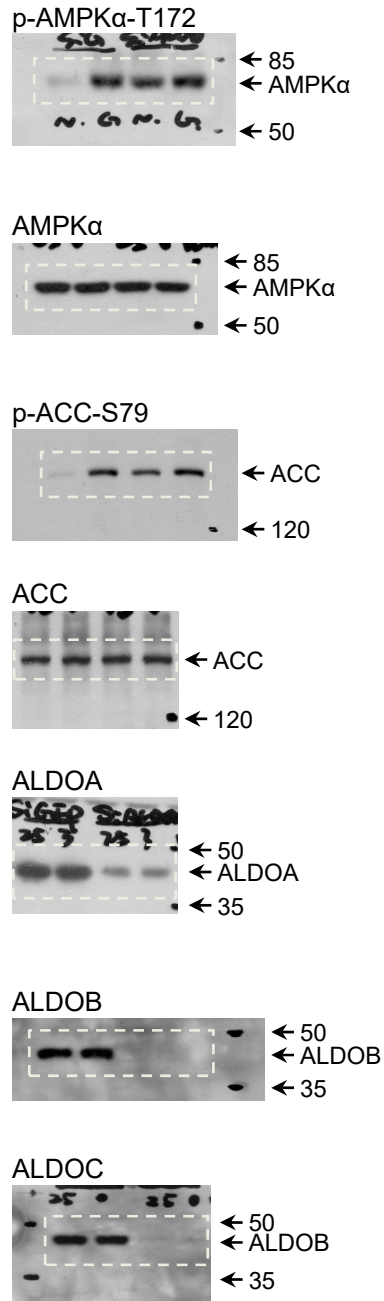


Fig. 4b

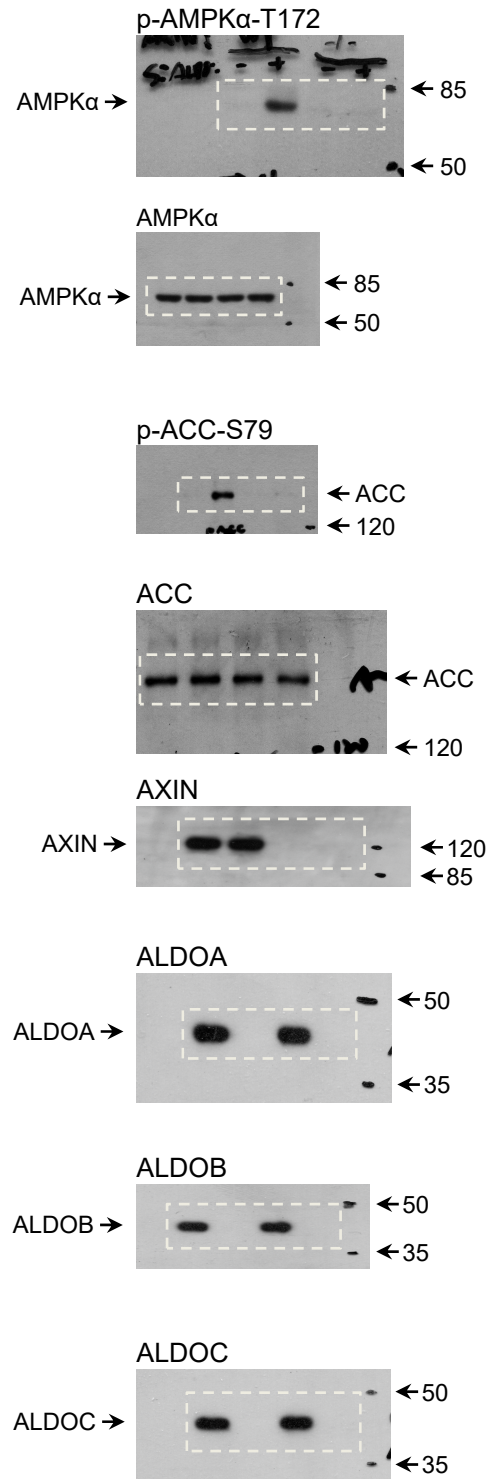


Fig. 4c

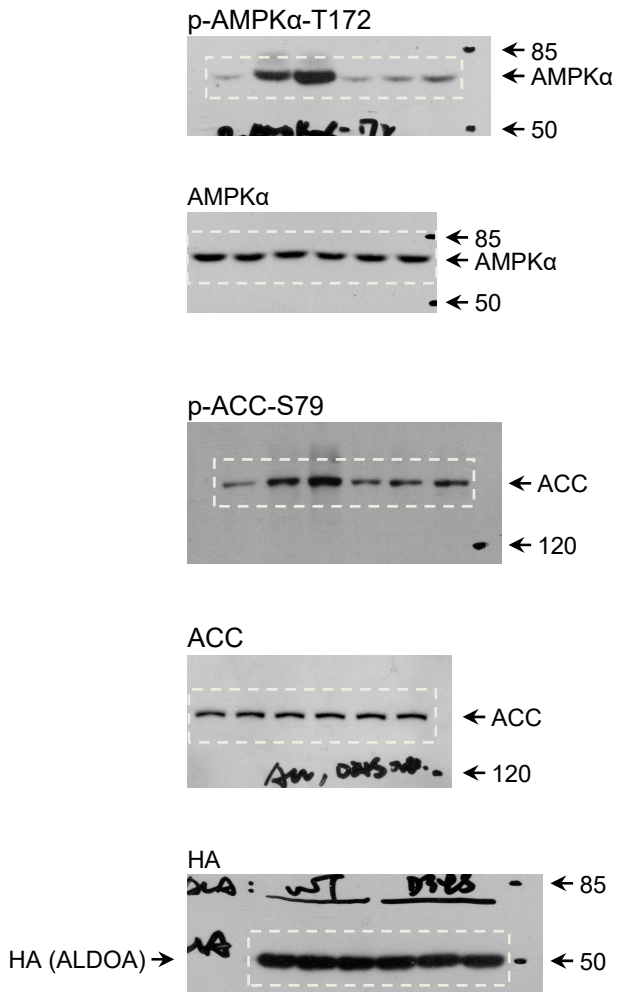
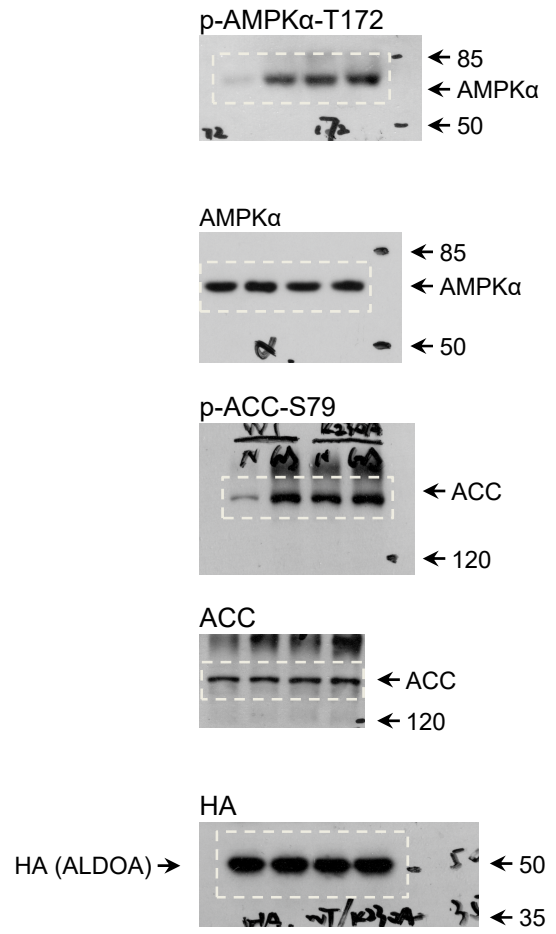
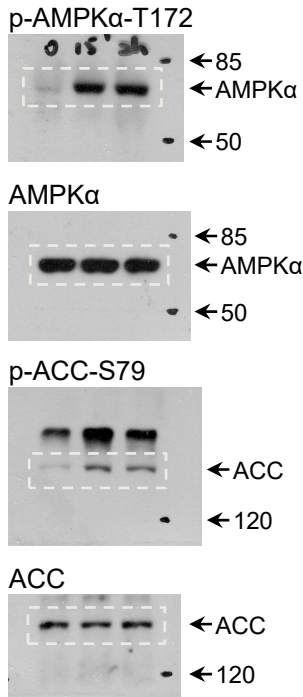


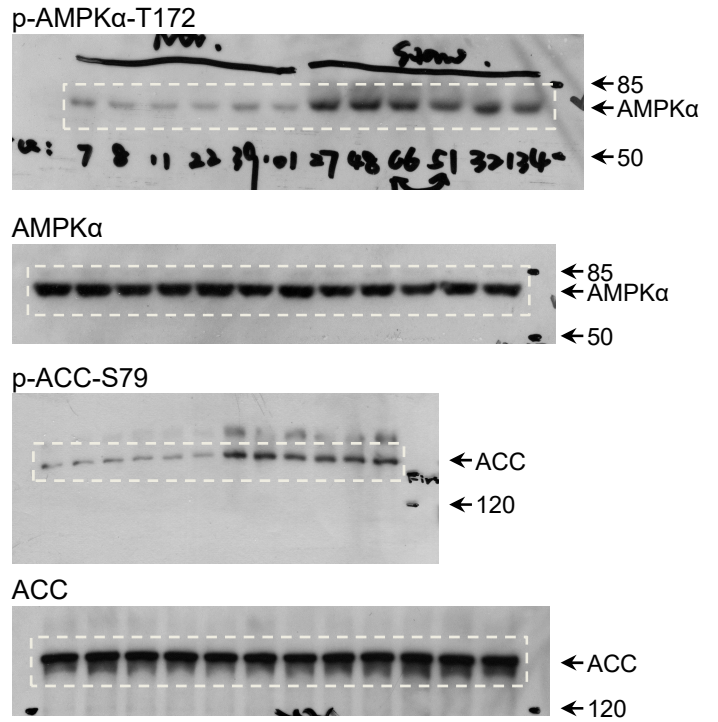
Fig. 4d



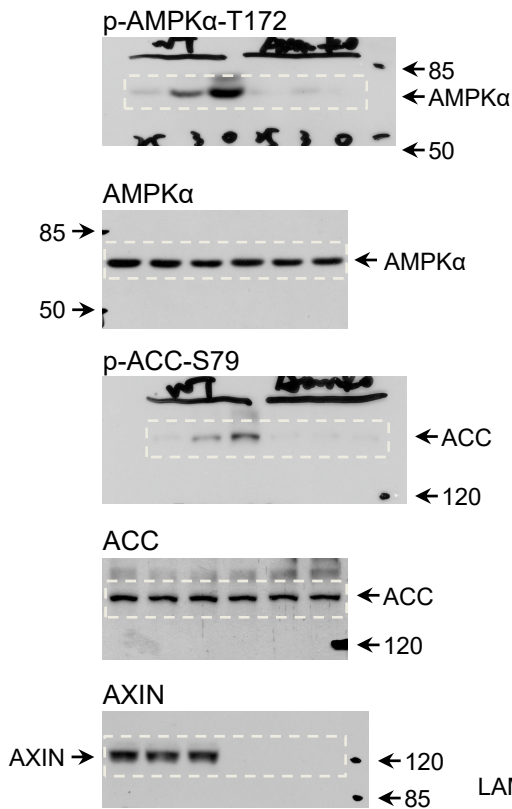
Extended Data Fig. 1b



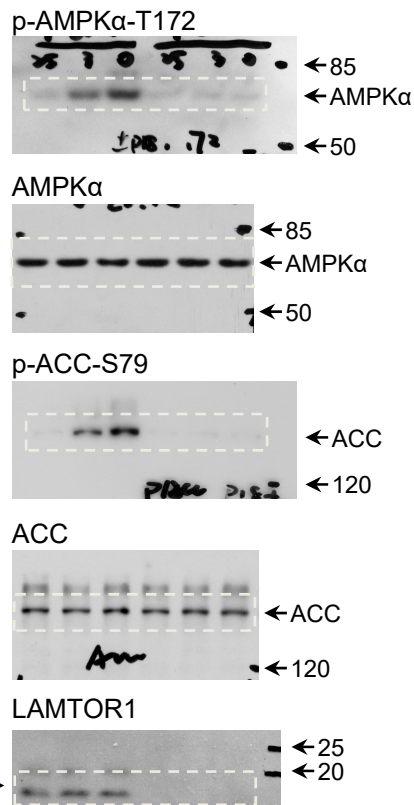
Extended Data Fig. 1f



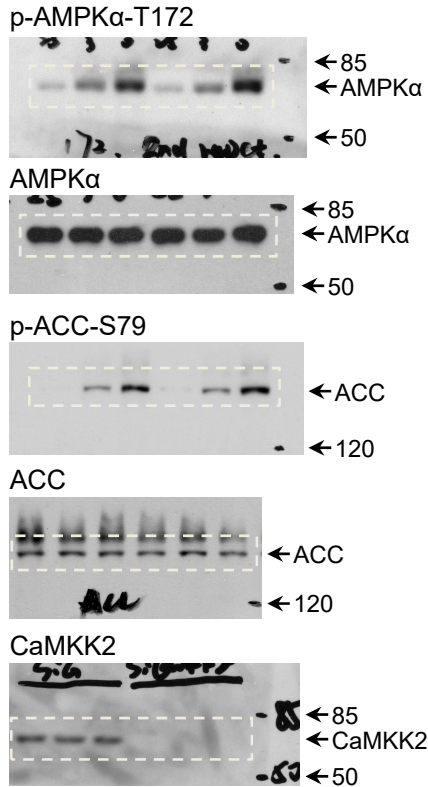
Extended Data Fig. 2a



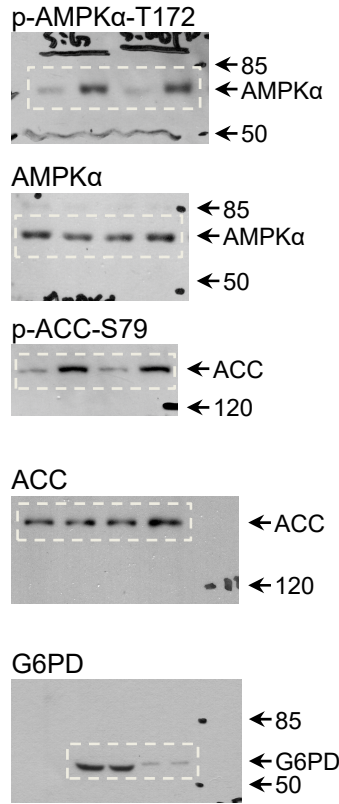
Extended Data Fig. 2b



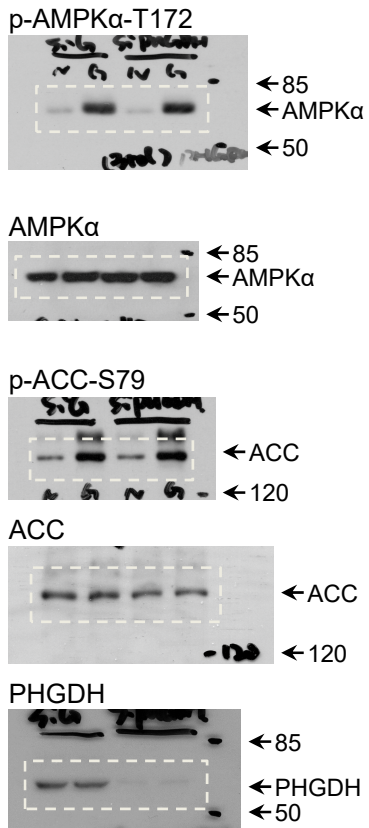
Extended Data Fig. 2d



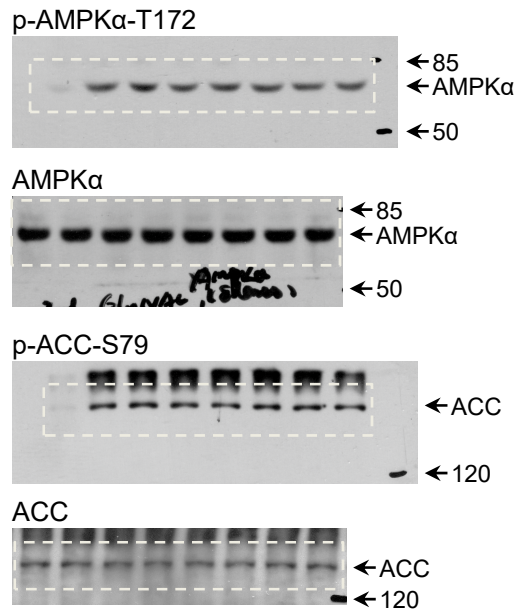
Extended Data Fig. 3b



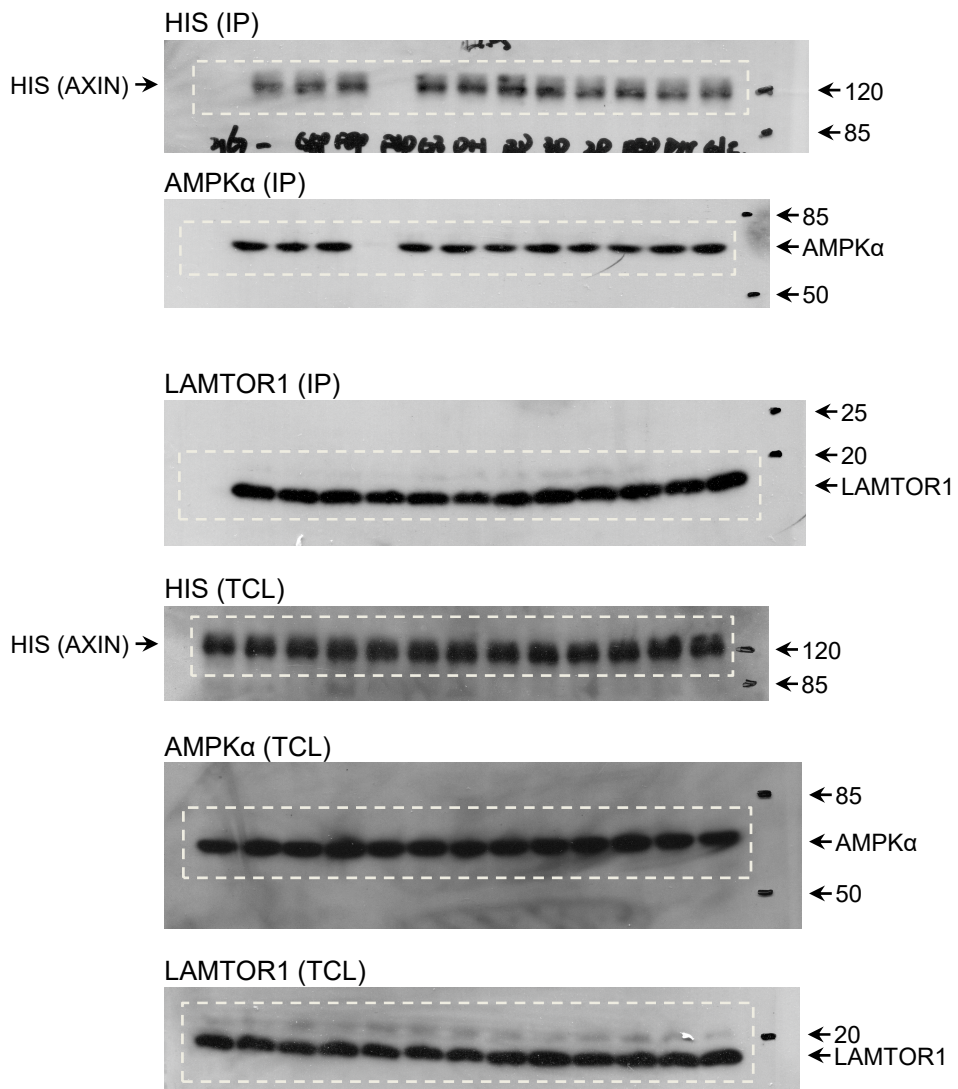
Extended Data Fig. 3c



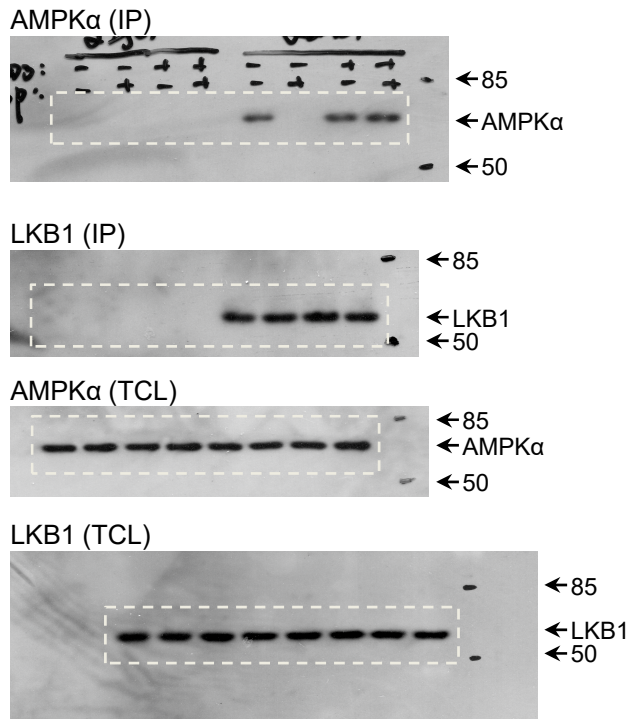
Extended Data Fig. 3d



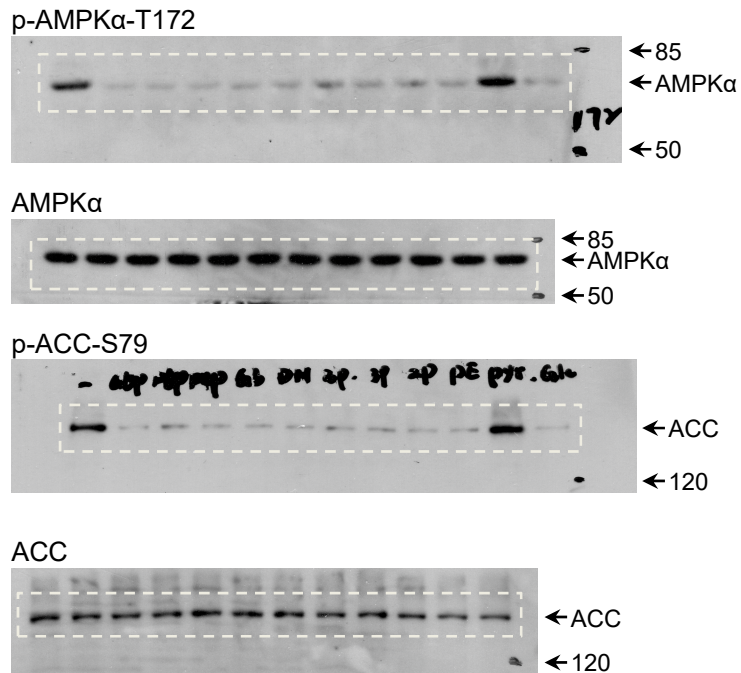
Extended Data Fig. 4a



Extended Data Fig. 4b

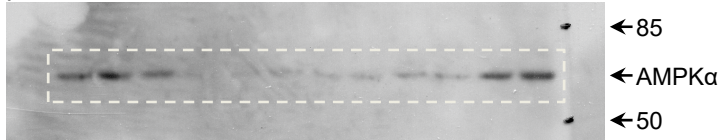


Extended Data Fig. 4j

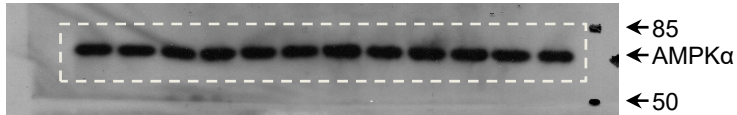


Extended Data Fig. 4k

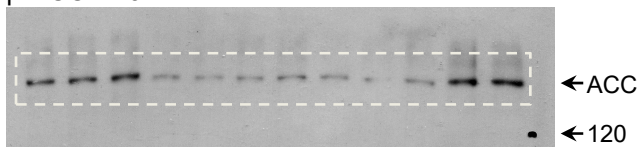
p-AMPK α -T172



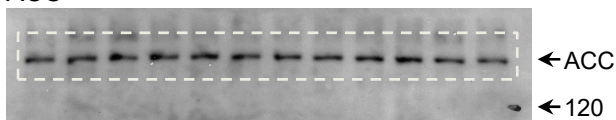
AMPK α



p-ACC-S79

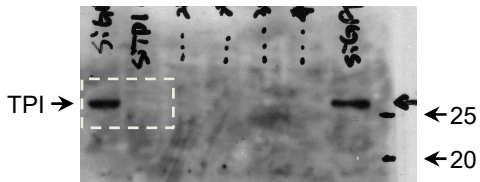


ACC

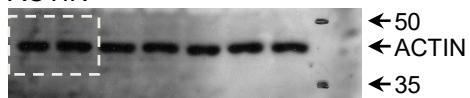


Extended Data Fig. 4l

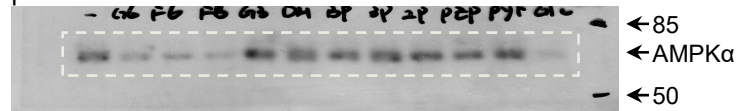
TPI



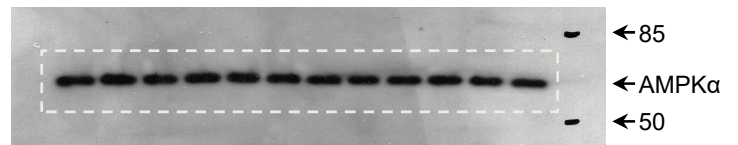
ACTIN



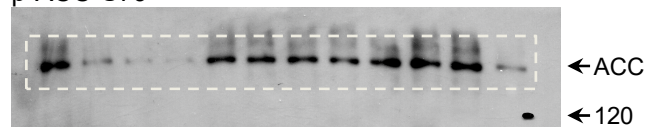
p-AMPK α -T172



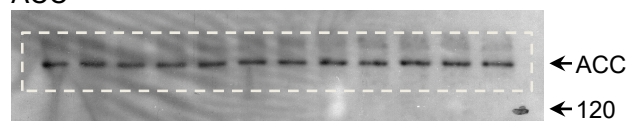
AMPK α



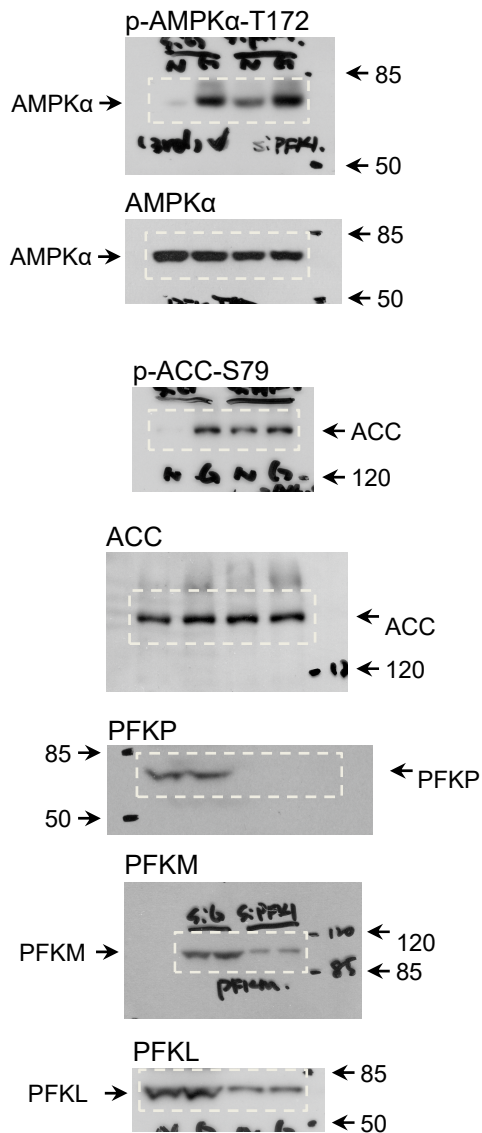
p-ACC-S79



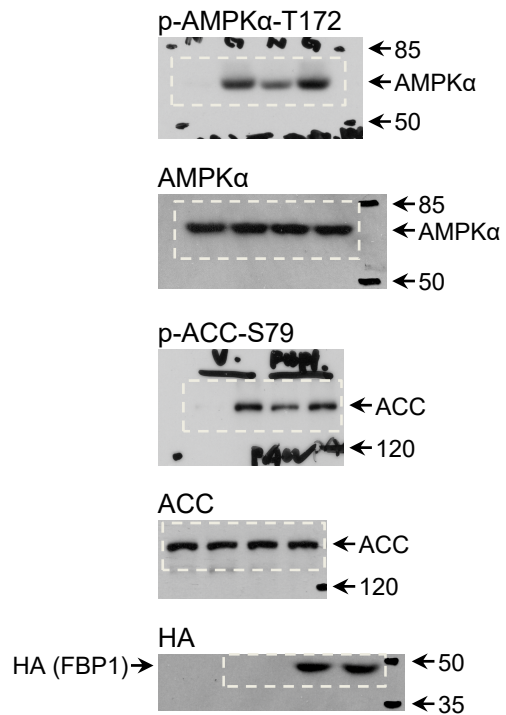
ACC



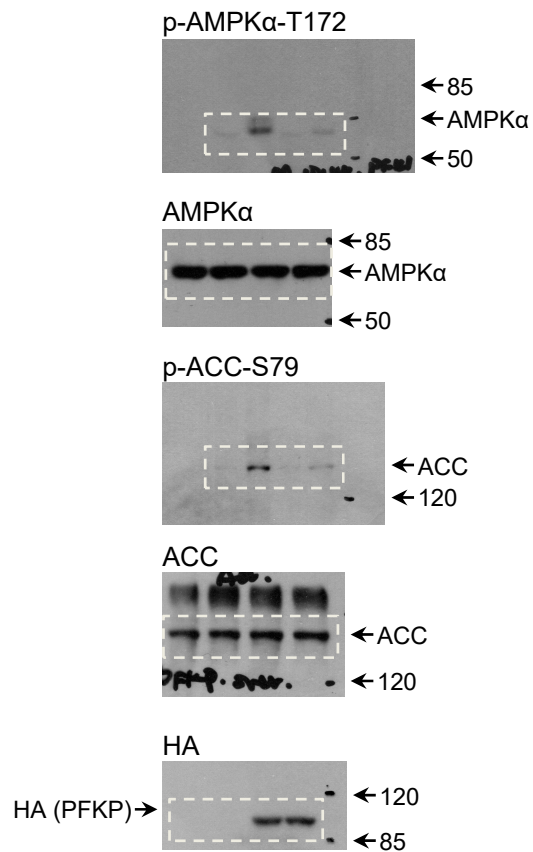
Extended Data Fig. 5a



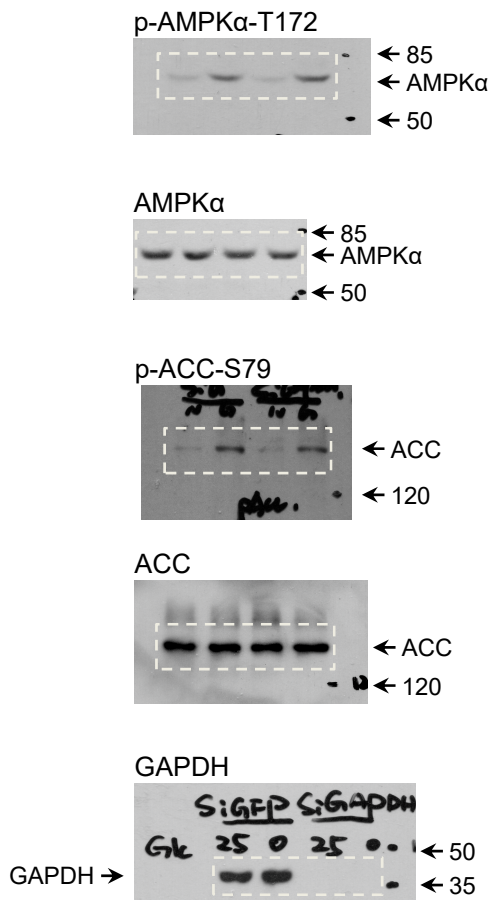
Extended Data Fig. 5b



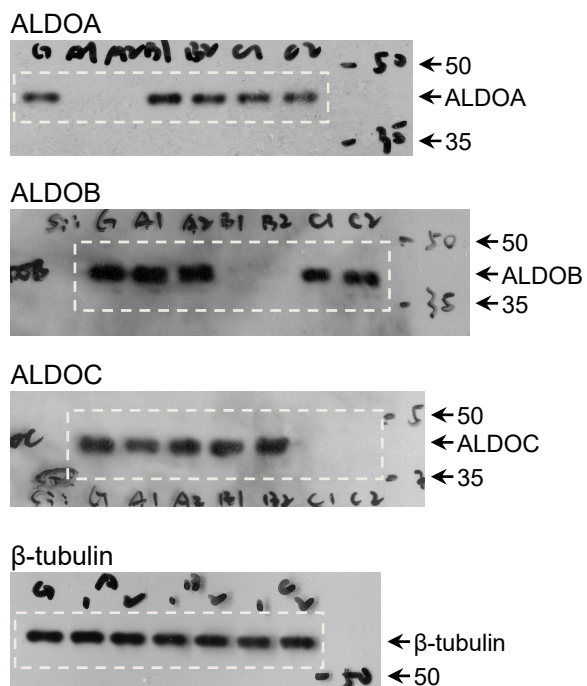
Extended Data Fig. 5c



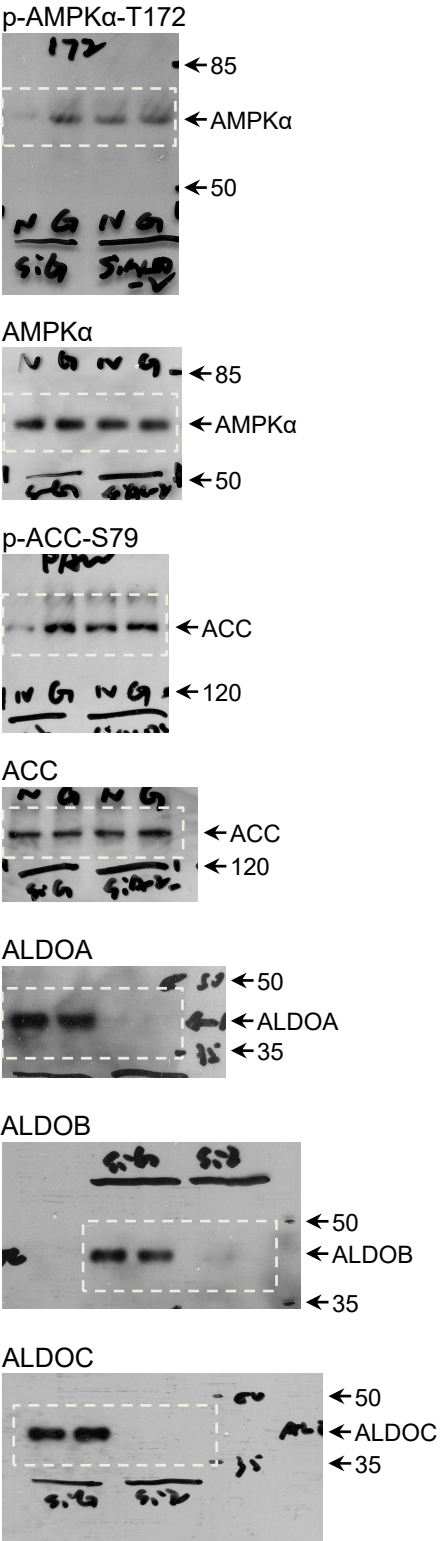
Extended Data Fig. 5d



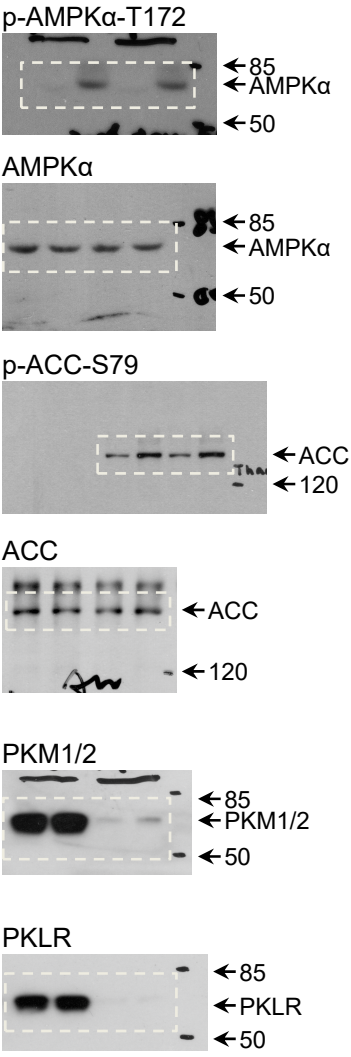
Extended Data Fig. 6b



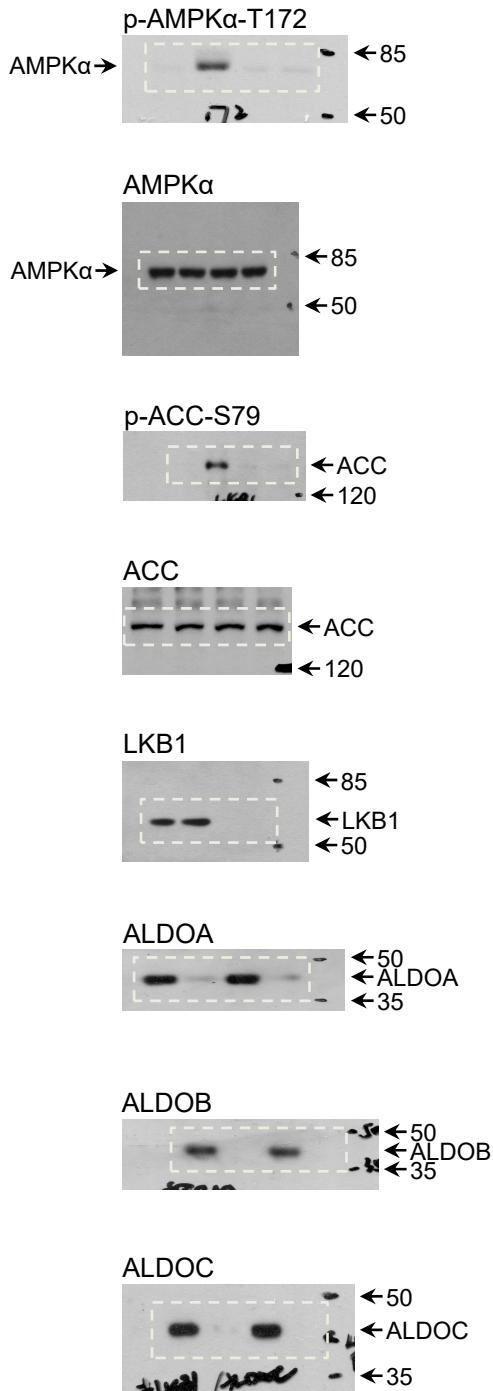
Extended Data Fig. 6d



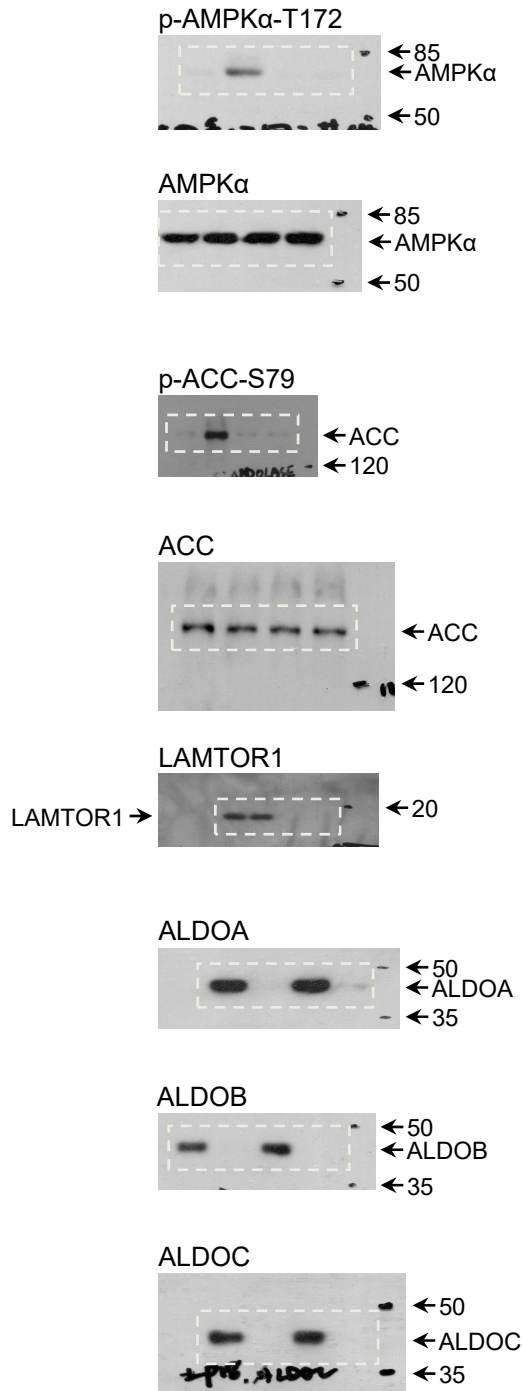
Extended Data Fig. 6e



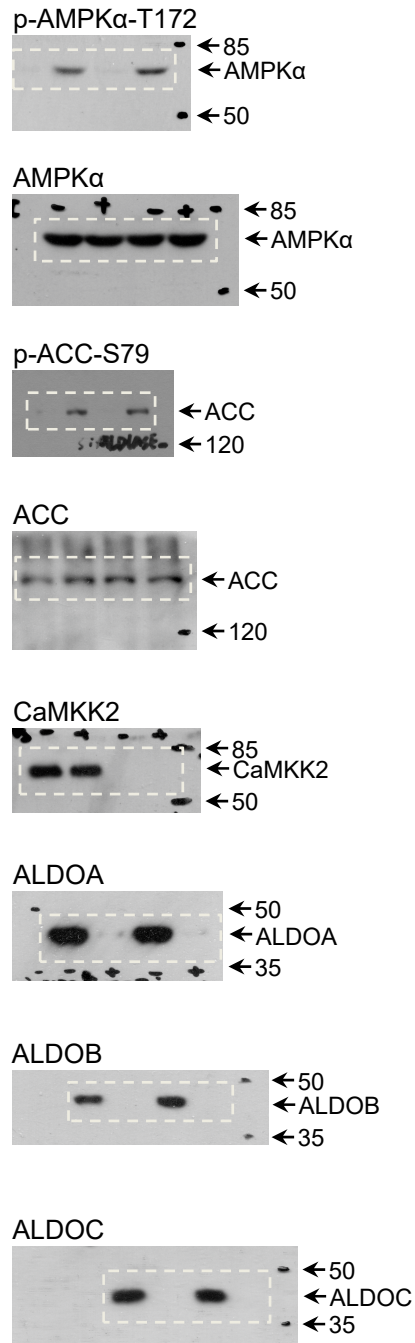
Extended Data Fig. 6g



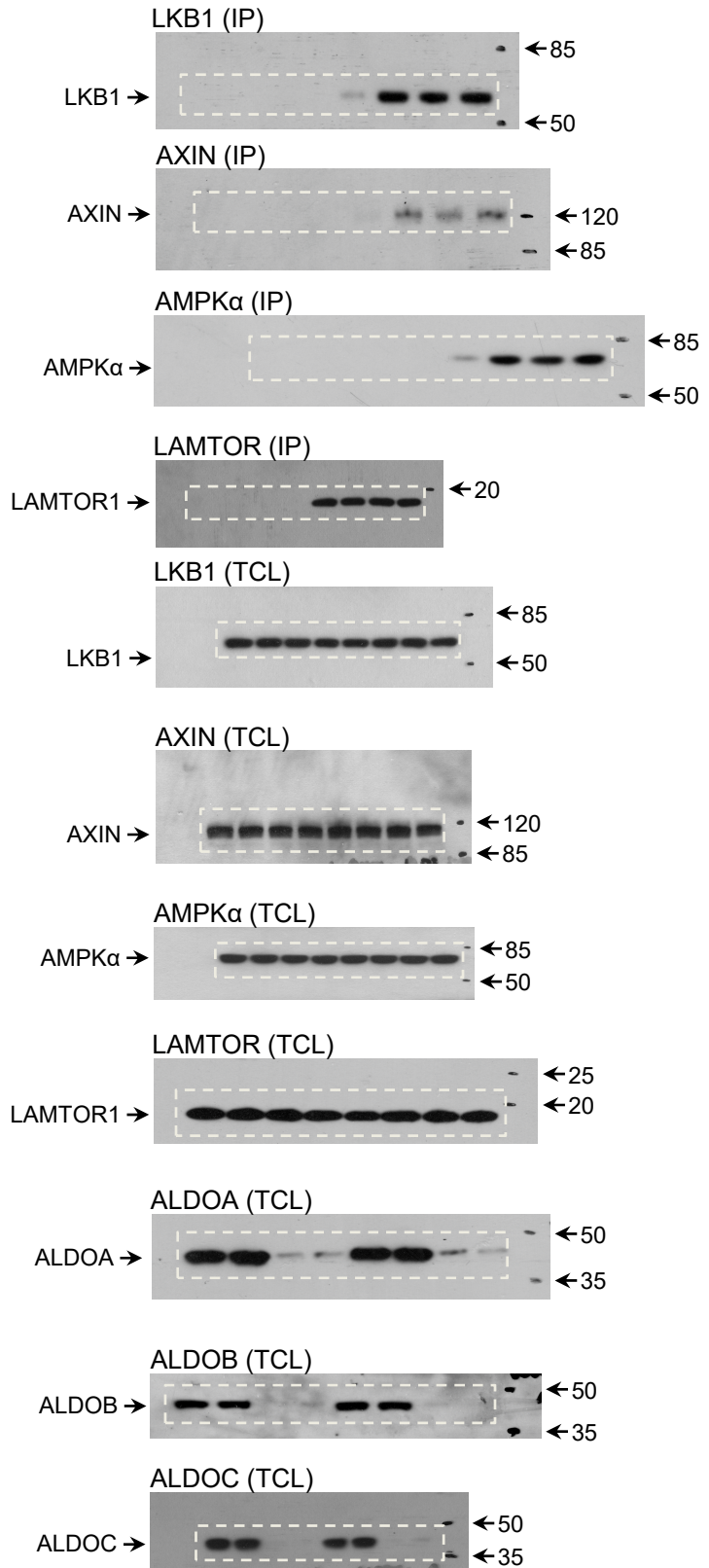
Extended Data Fig. 6h



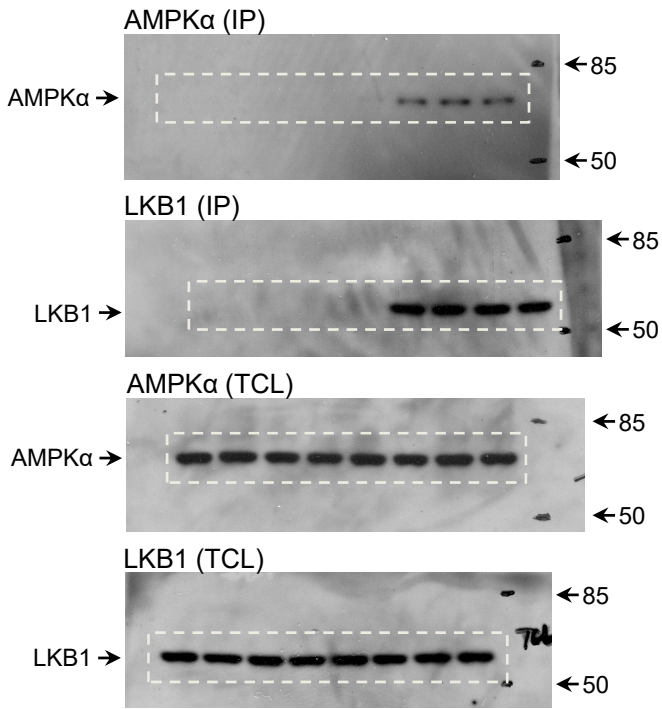
Extended Data Fig. 6i



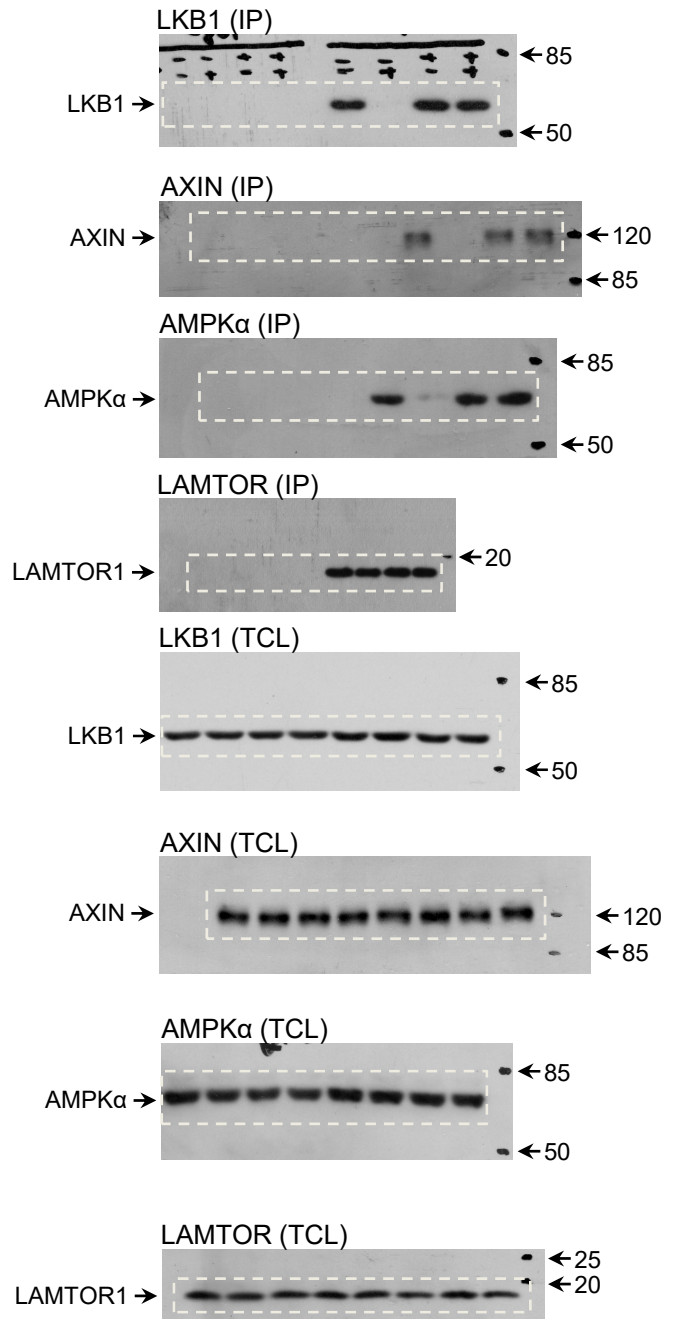
Extended Data Fig. 6j



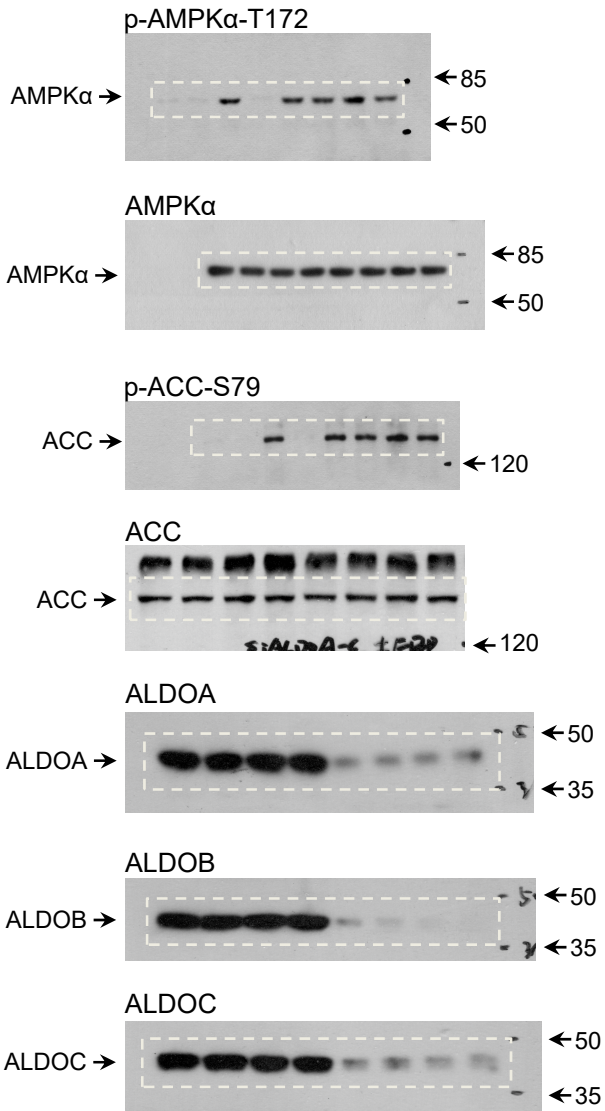
Extended Data Fig. 6k



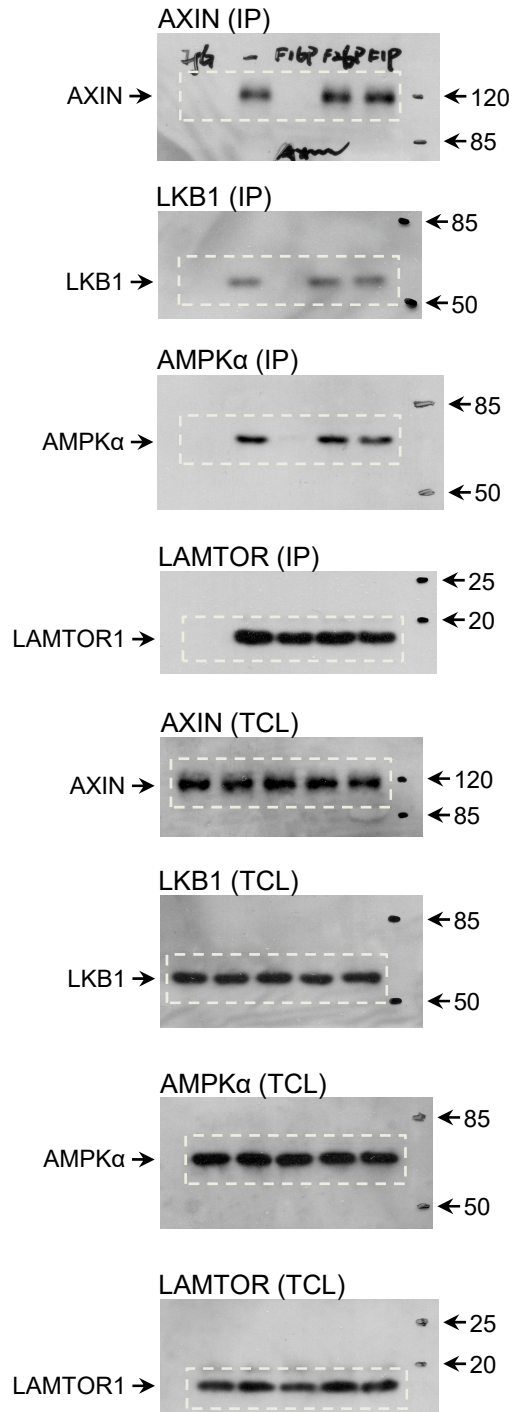
Extended Data Fig. 6l



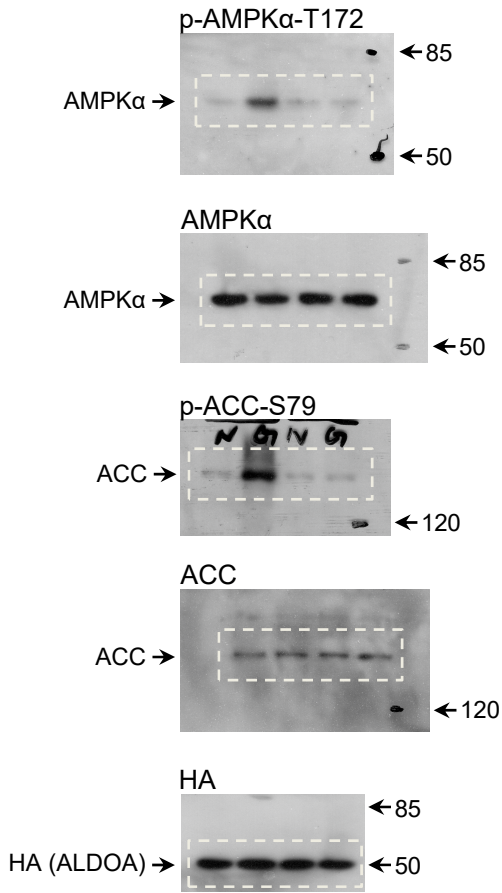
Extended Data Fig. 6m



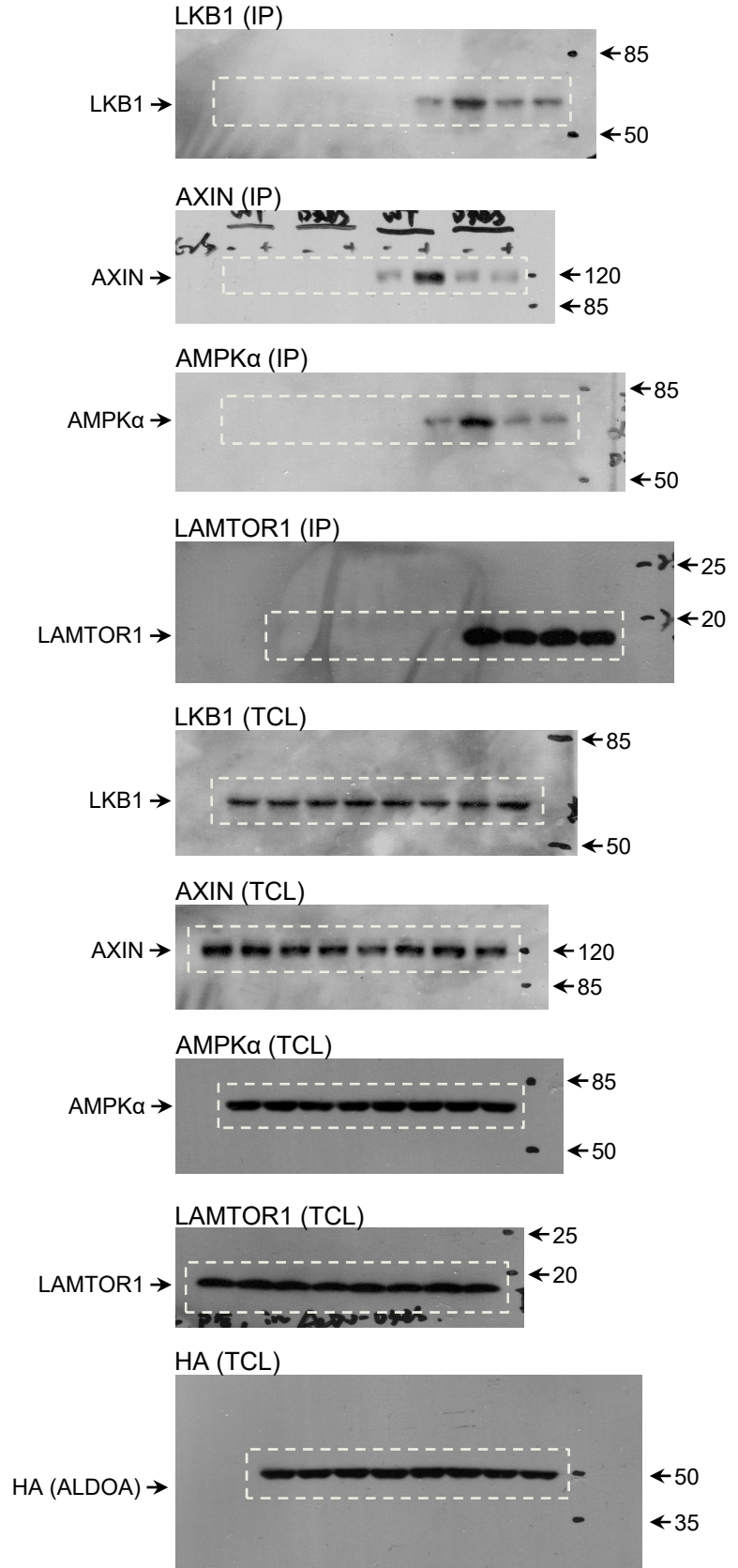
Extended Data Fig. 6n



Extended Data Fig. 8b

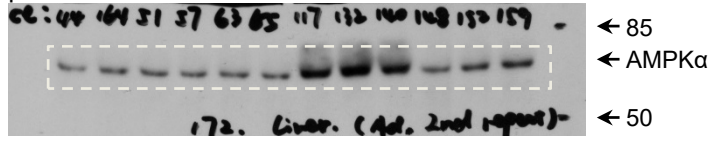


Extended Data Fig. 8c

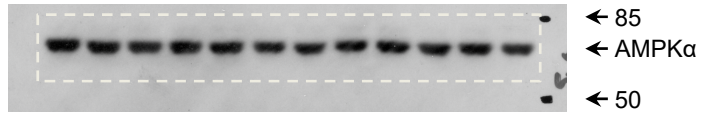


Extended Data Fig. 8d

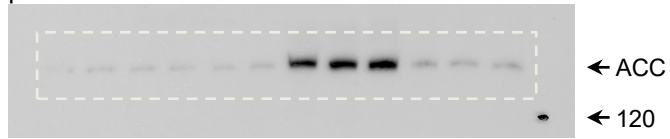
p-AMPK α -T172



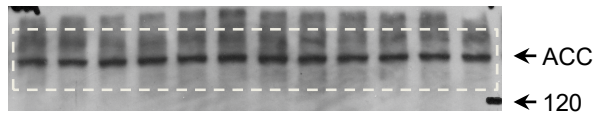
AMPK α



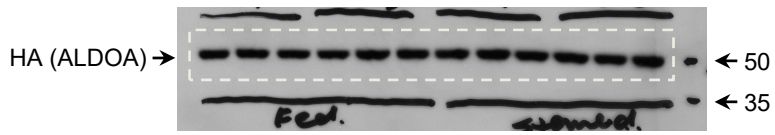
p-ACC-S79



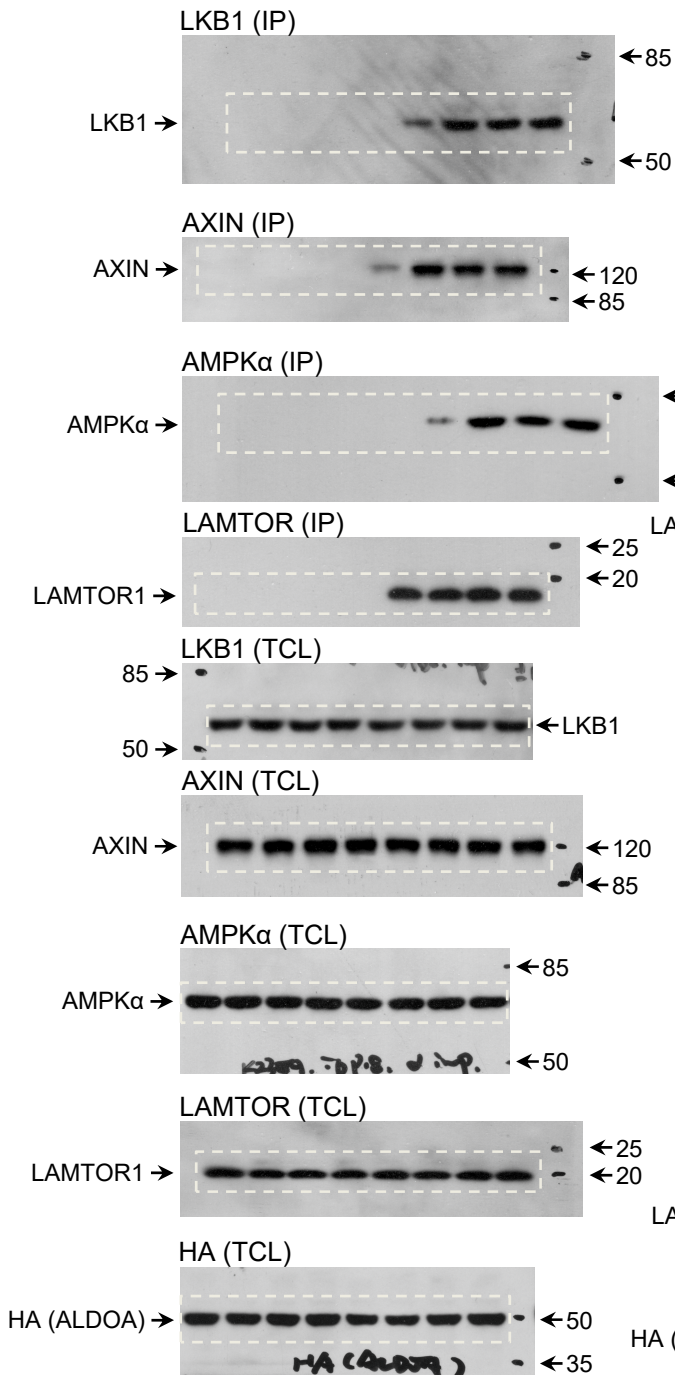
ACC



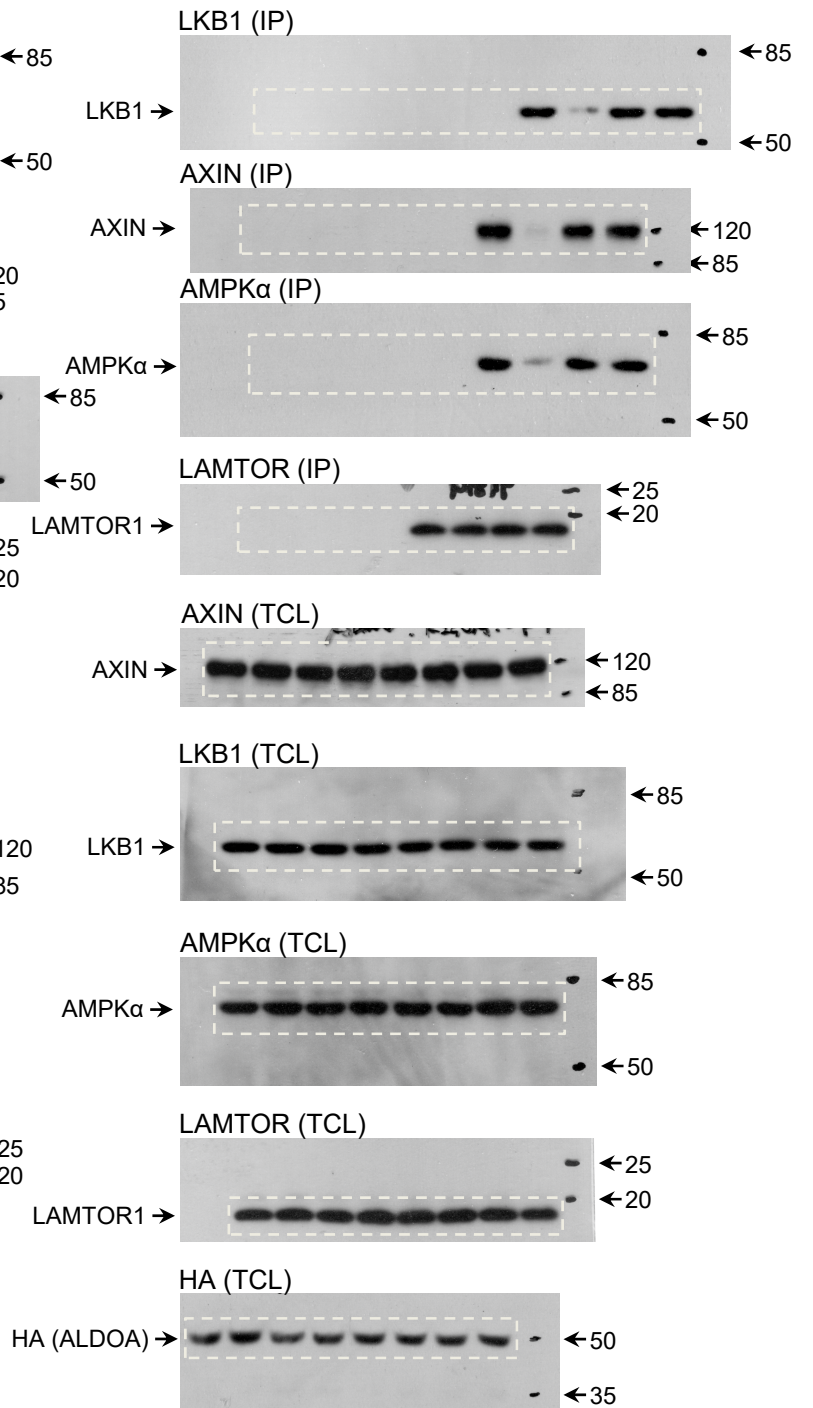
HA



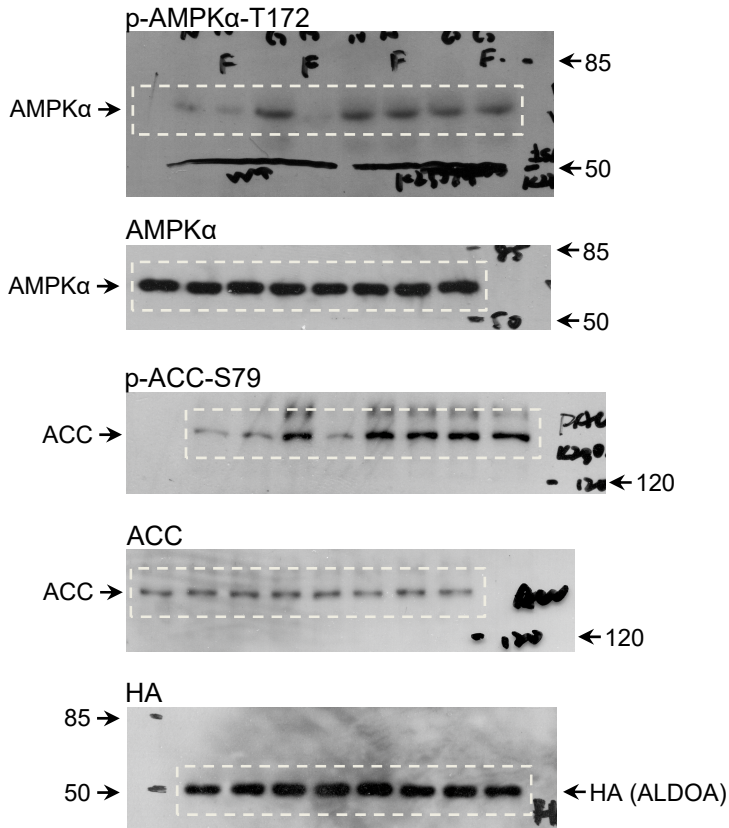
Extended Data Fig. 8e



Extended Data Fig. 8f



Extended Data Fig. 8g



Extended Data Fig. 10b

