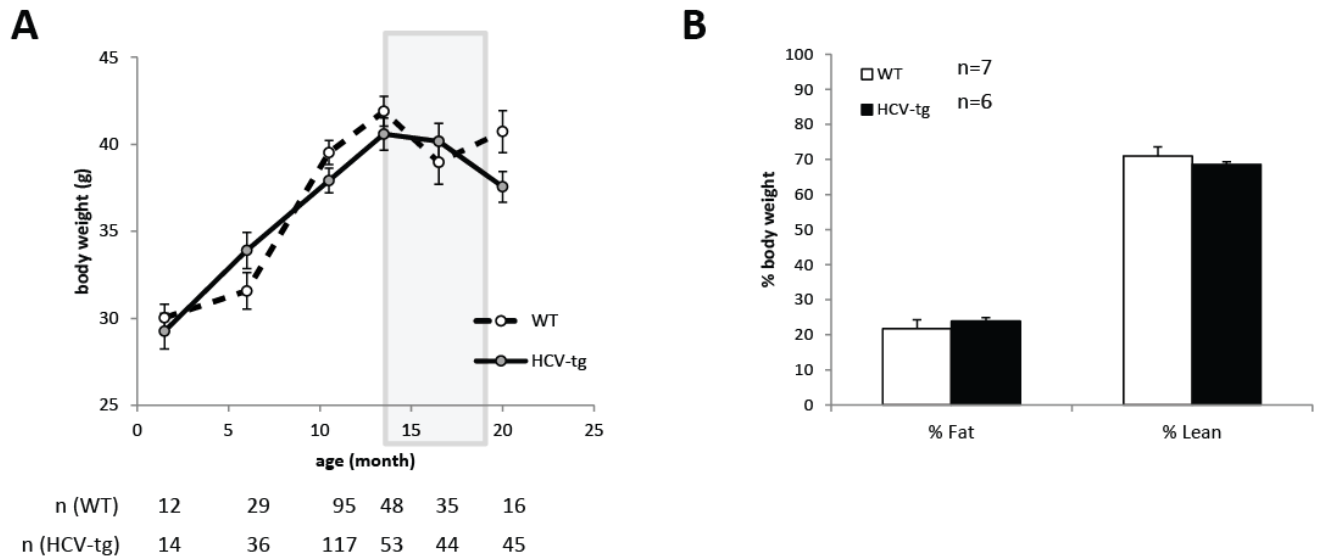


Supplementary Materials:

Supplementary Figure 1.



Supplementary Figure 1. (A) Body weight at different ages in HCV-tg mice and age-matched WT littermates. The grey box represents the age range of mice included in this study. (B) Respective proportions of whole-body lean and fat tissues in 14 to 18 months old mice measured by means of tomography scanner and expressed as percentage of total body weight.

Supplementary Table 1. PCR primers and probes:

Target	Assay ID	Gene accession number	Length of amplicon (bp)
G6pc	Mm00839363_m1	NM_008061.3	116
Gck	Mm00439129_m1	NM_010292.4	69
Irs2	Mm03038438_m1	NM_001081212.1	63
Pck1	Mm00440632_g1	NM_011044.2	77
Pfkfb3	Mm00504650_m1	NM_001177752.1	98
Socs3	Mm01249143_g1	NM_007707.3	113

Supplementary Table 2. Antibodies

Target	Antibody name and clone	Supplier
14.3.3	14-3-3 ζ Antibody (C-16)	Santa Cruz Biotechnology, INC.
Akt (Pan)	Akt (pan) (C67E7) Rabbit mAb	Cell Signaling Technology
Akt-P(Ser473)	Phospho-Akt (Ser473) (D9E) Rabbit mAb	Cell Signaling Technology
CD95	Monoclonal Antibody CD95 (Human Fas) (7C11)	Immunotech
FoxO1	FKHR (C-9)	Santa Cruz Biotechnology, INC.
FoxO1-P(Ser256)	p-FKHR (Ser 256) Sc-101681	Santa Cruz Biotechnology, INC.
Glut2	Glut2 (C-19)	Santa Cruz Biotechnology, INC.
GK	Glucokinase (clone 849520)	R&D Systems
GSK3 alpha/beta	GSK-3 alpha/beta Rabbit mAb (D75D3)	Cell Signaling Technology
GSK3α (/β)-P(Ser21/9)	Phospho (Ser21/9)-GSK-3 alpha (/beta) (37F11)	Cell Signaling Technology
HA tag	HA tag (BMG-3F10), Rat monoclonal	Sigma-Aldrich (Roche)
HCV core	Clone 27G5G5	Gift from Dr. G. Inchauspé
IRS-2	IRS-2 Antibody (L1326)	Cell Signaling Technology
p70-S6K	p70 S6 Kinase (49D7) Rabbit mAb	Cell Signaling Technology
p70-S6K-P(Thr389)	Phospho-p70 S6 Kinase (Thr389) (108D2) Rabbit mAb	Cell Signaling Technology
PDK1	PDK1 Antibody (#3062)	Cell Signaling Technology
PDK1-P(Ser241)	Phospho-PDK1 (Ser241) Antibody (#3061)	Cell Signaling Technology
PEPCK-C	PEPCK-C (P14)	Santa Cruz Biotechnology, INC.
PKCE	PKC epsilon (C-15)	Santa Cruz Biotechnology, INC.
PKCE-P(Ser728)	p-PKC epsilon (Ser 729) (sc-12355)	Santa Cruz Biotechnology, INC.
SOCS3	SOCS3 (L210) Antibody	Cell Signaling Technology
γTubulin	gamma-Tubulin, Clone GTU-88	Sigma-Aldrich