

Figure S1 (Figure 2 continued). **USP9X Promotes PCM1 and CEP55 Stabilization.** (A) MCF-7

cells were transfected with control siRNA or different sets of USP9X siRNAs. Cellular extracts were prepared and analyzed by Western blotting. The intensity of each band was quantified by densitometry with Image J software with β -actin as a normalizer. (B) MCF-7 cells were transfected with control siRNA or USP9X siRNA followed by treatment with DMSO or proteasome inhibitor MG132 (10 μ M). Cellular extracts were prepared and analyzed by Western blotting and the intensity of each band was quantified by densitometry with Image J software with β -actin as a normalizer. (C) Control U2OS cells or U2OS cells stably expressing wild type USP9X (USP9X-WT) or catalytic mutant USP9X (USP9X-C1566S) were transfected with control siRNA or USP9X 3'UTR siRNA for 96 hours followed by Western blotting analysis. The intensity of each band was quantified by densitometry with Image J software with β -actin as a normalizer. (D) MCF-7 cells were cultured in the absence or presence of WP1130 as indicated. Cellular extracts were collected and analyzed by Western blotting. The intensity of each band was quantified by densitometry with Image J software with β -actin as a normalizer.

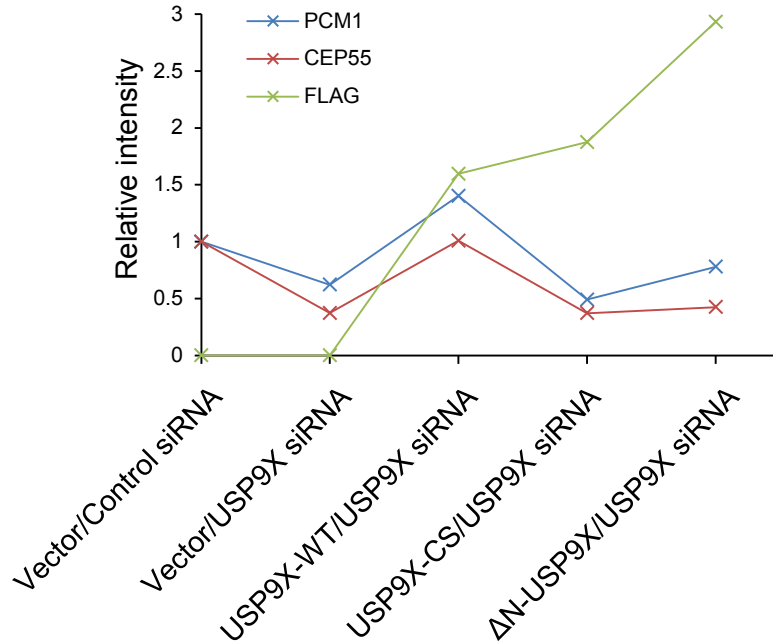
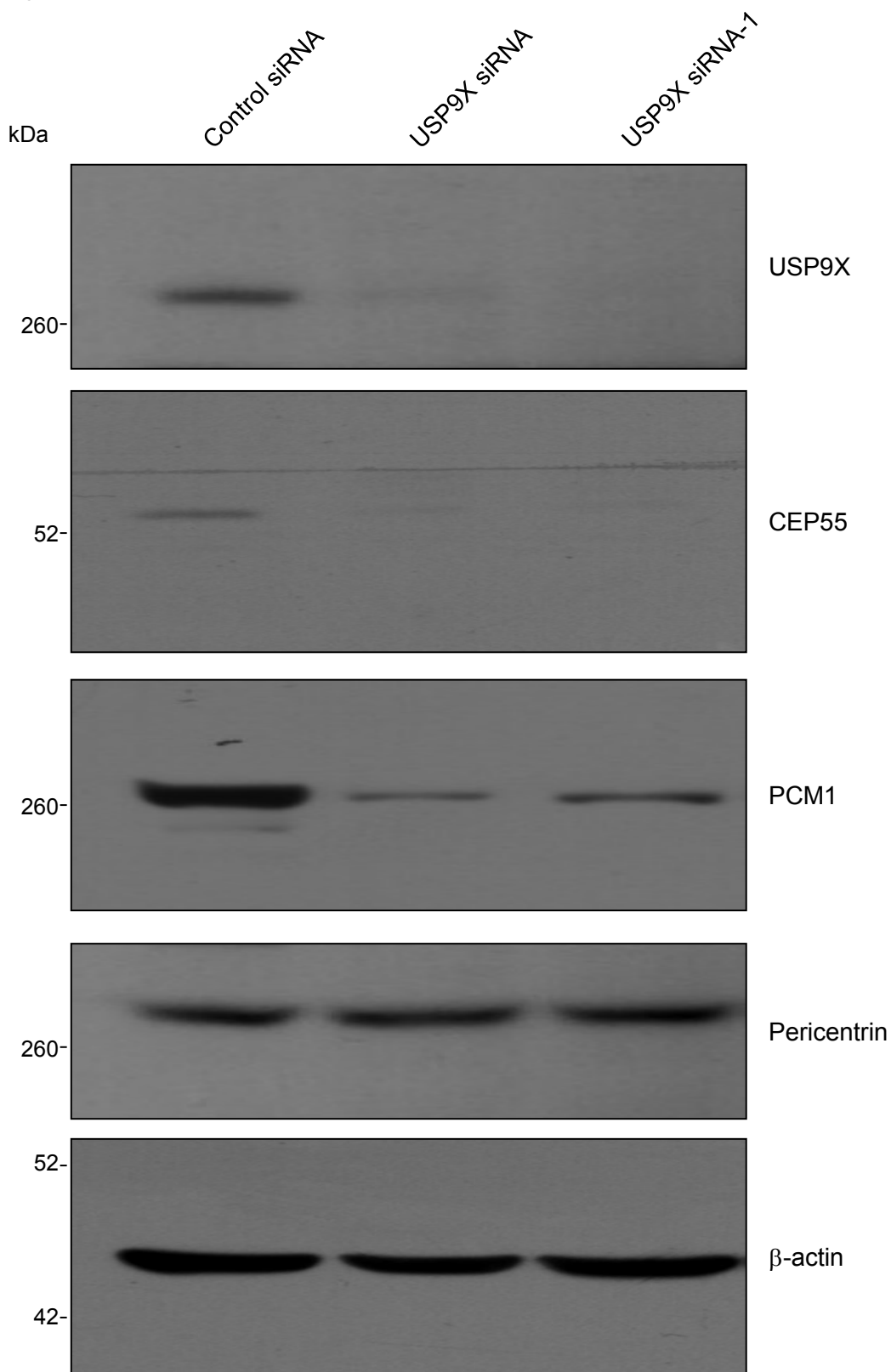
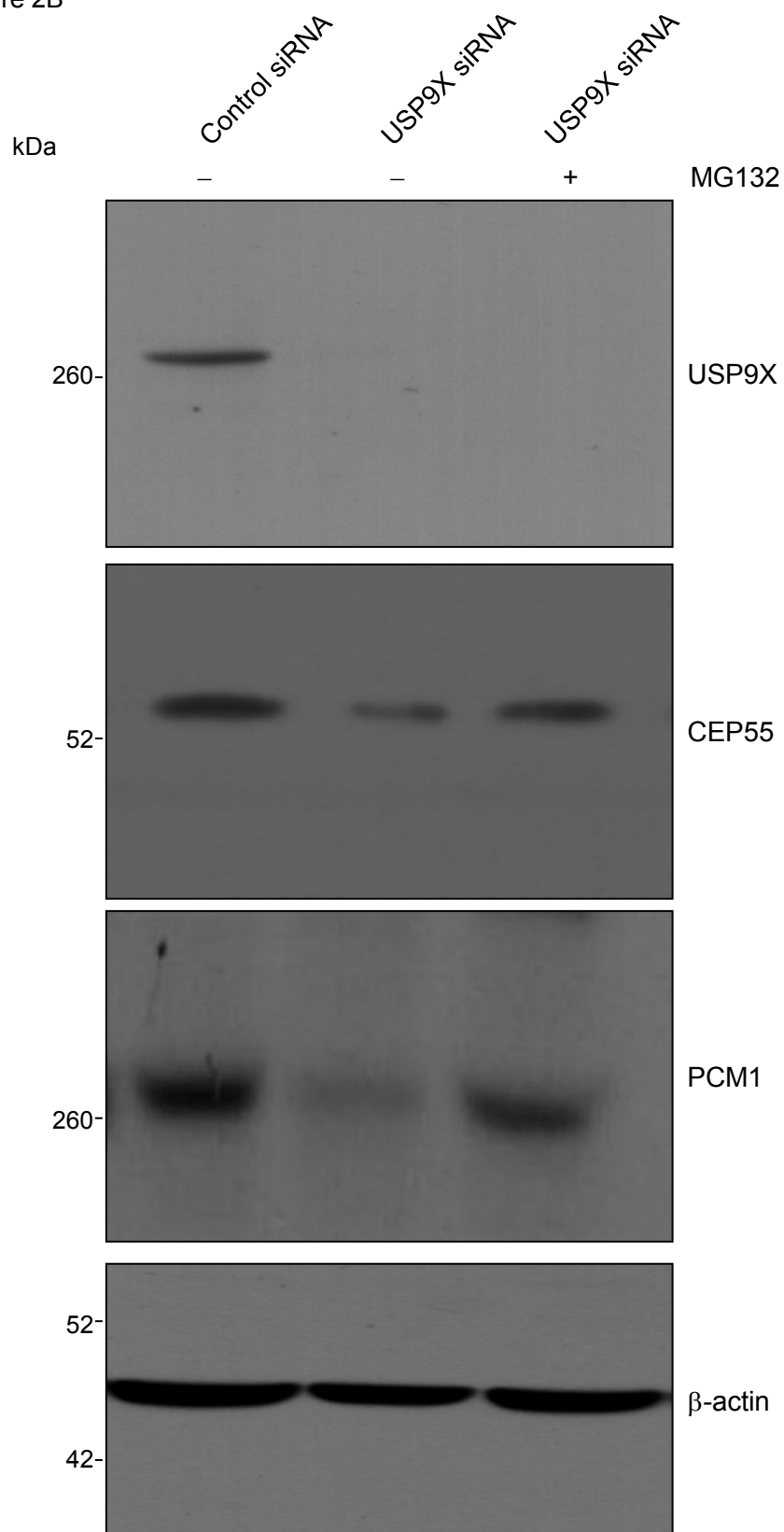


Figure S2 (Figure 6 continued). **USP9X Promotes Centrosome Biogenesis.** Control U2OS cells or U2OS cells stably expressing wild type USP9X (USP9X-WT) or catalytic mutant USP9X (USP9X-CS) or mutant lacking N-terminal region (USP9X-ΔN) were transfected with control siRNA or USP9X 3'UTR siRNA for 96 hours followed by HU treatment. Cellular extracts were collected and analyzed by Western blotting. The intensity of each band was quantified by densitometry with Image J software with β -actin as a normalizer.

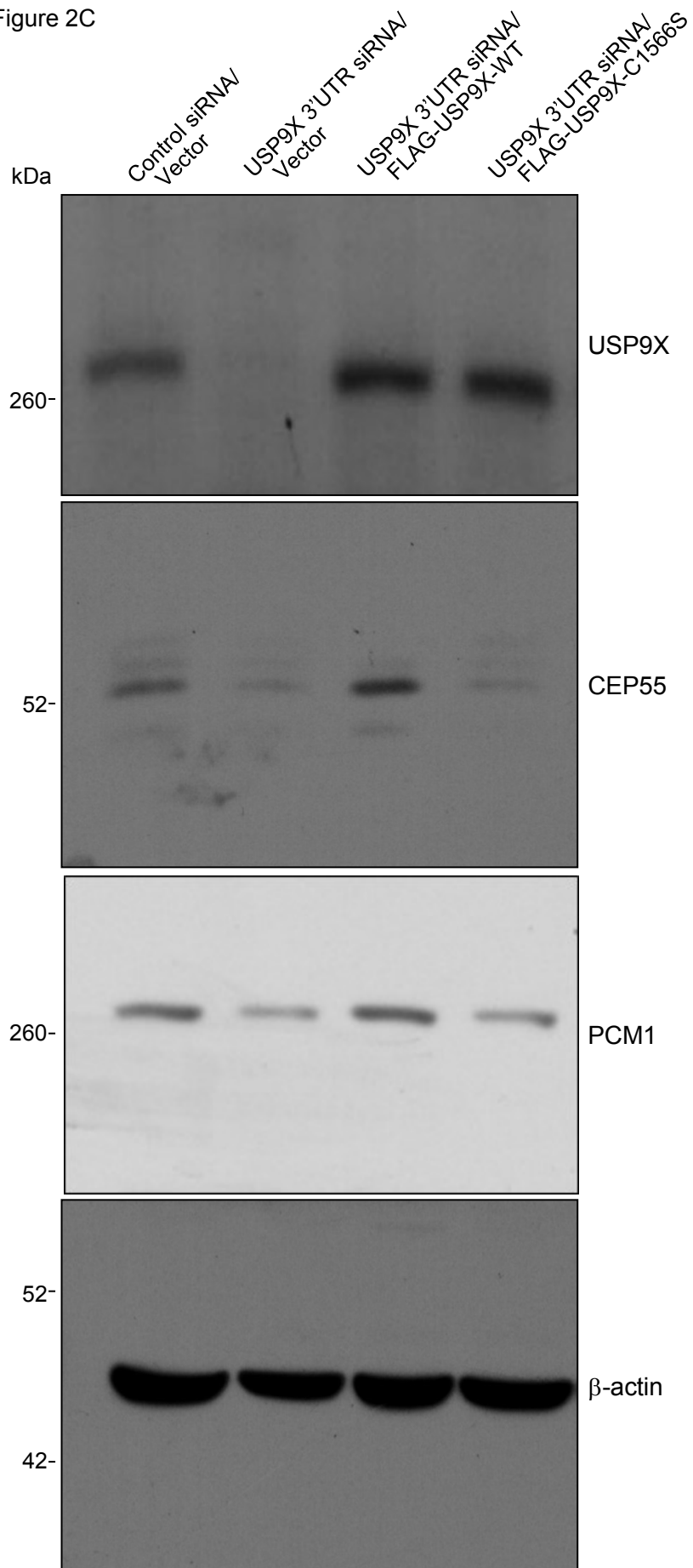
Large blots related to Figure 2A



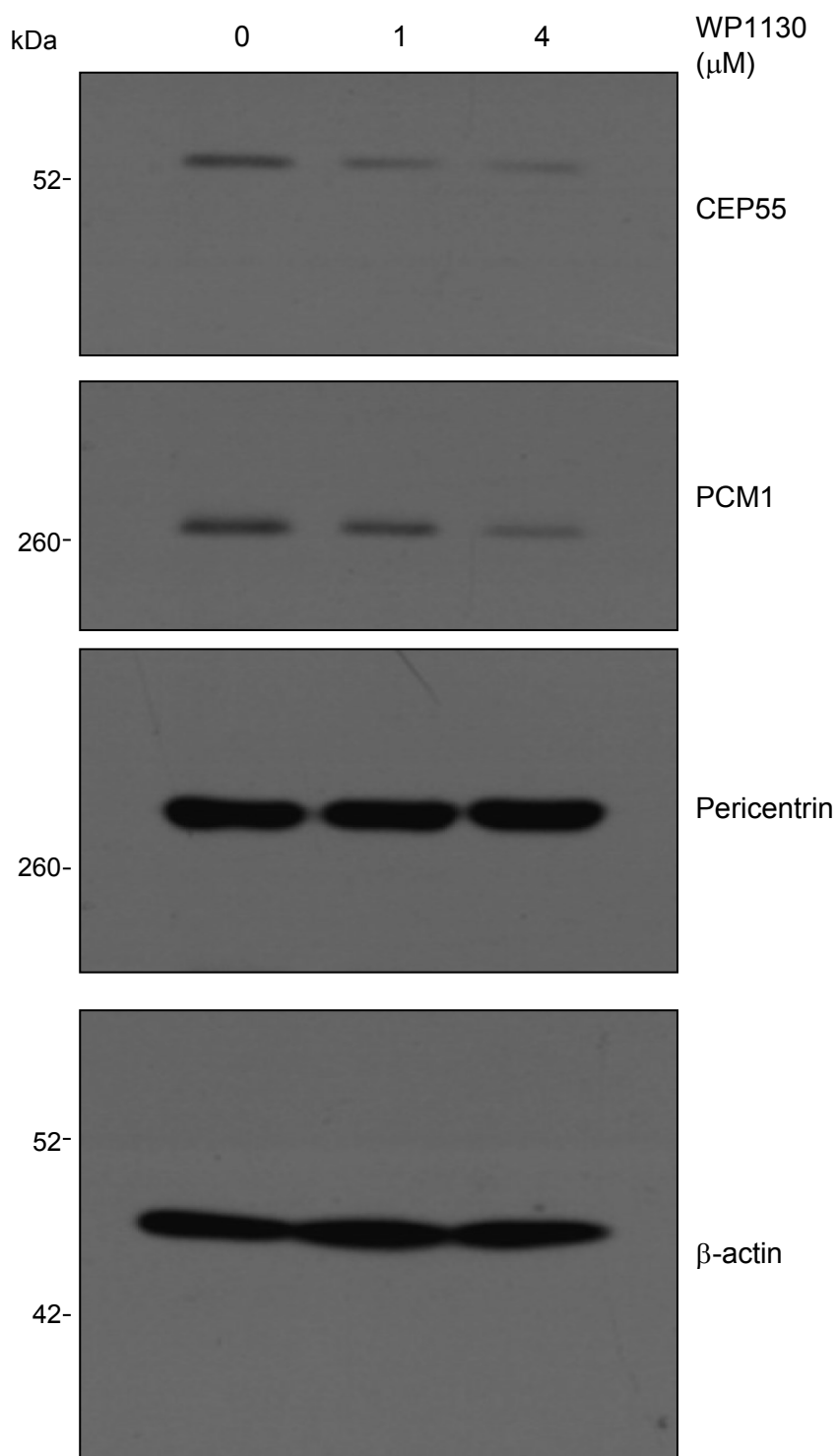
Large blots related to Figure 2B

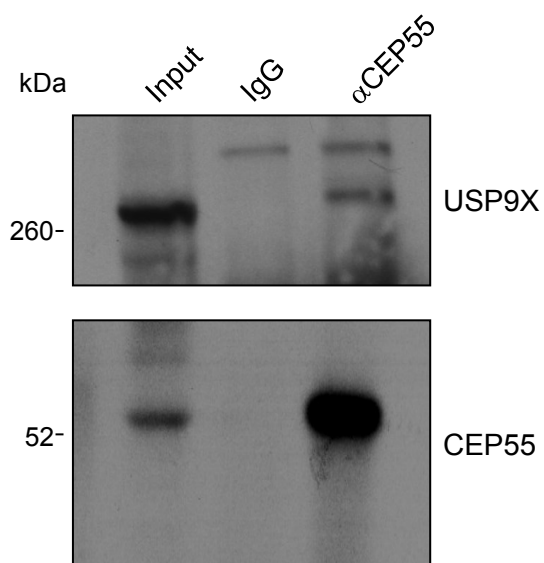
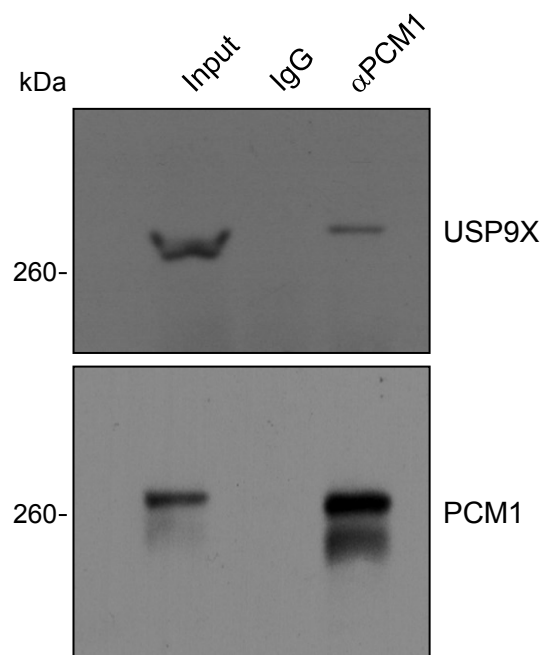


Large blots related to Figure 2C

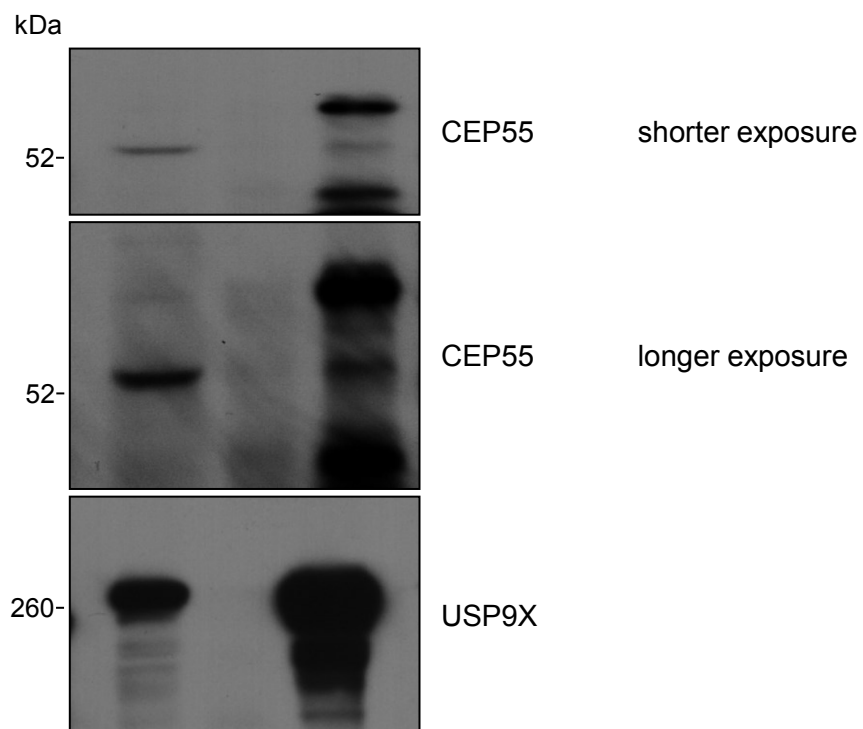
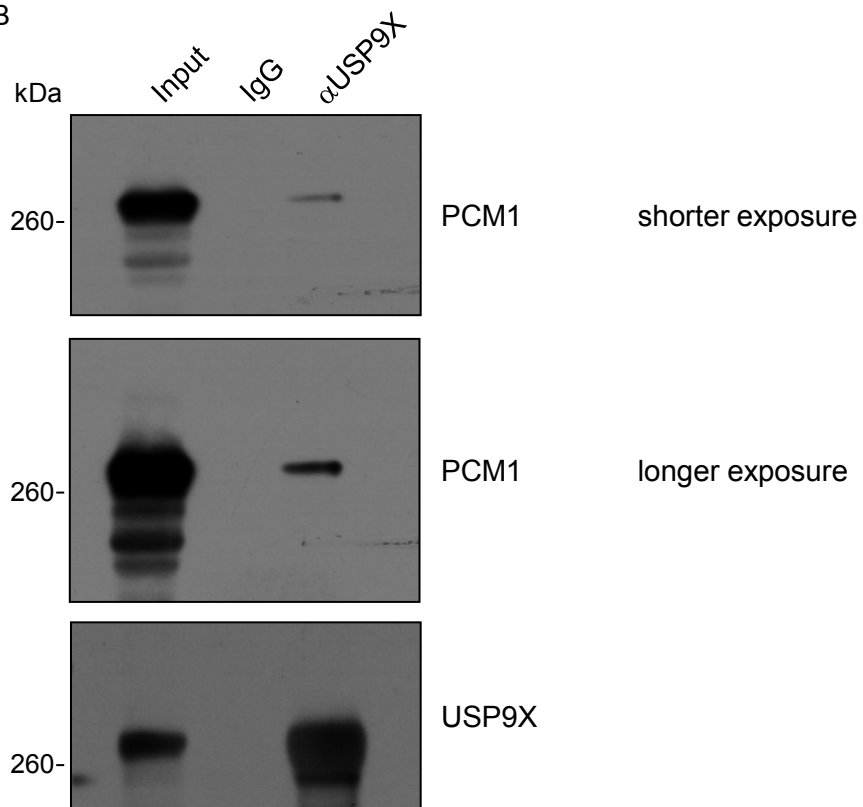


Large blots related to Figure 2D

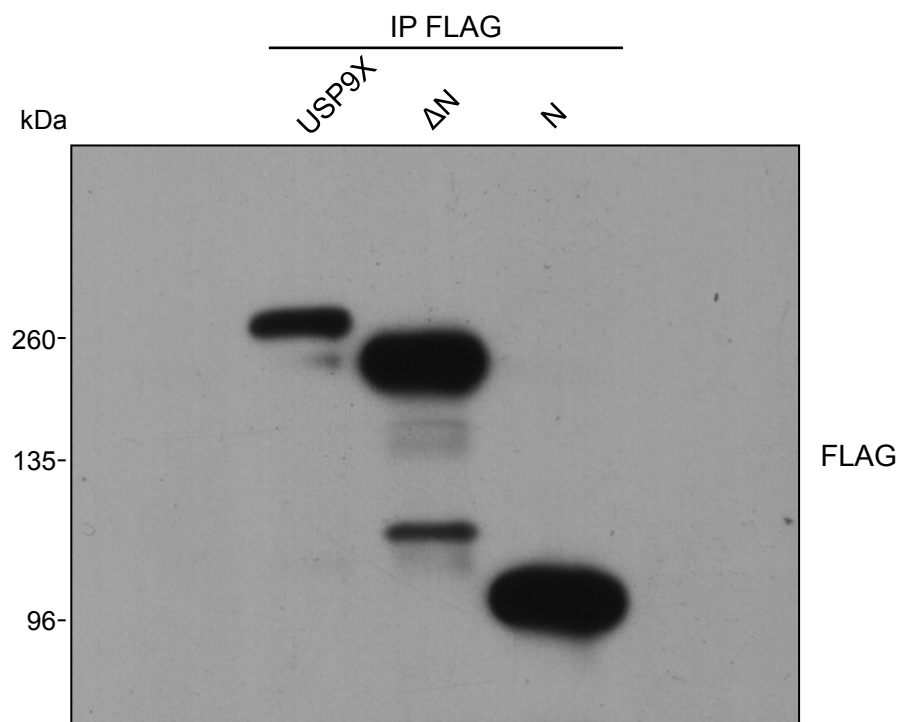
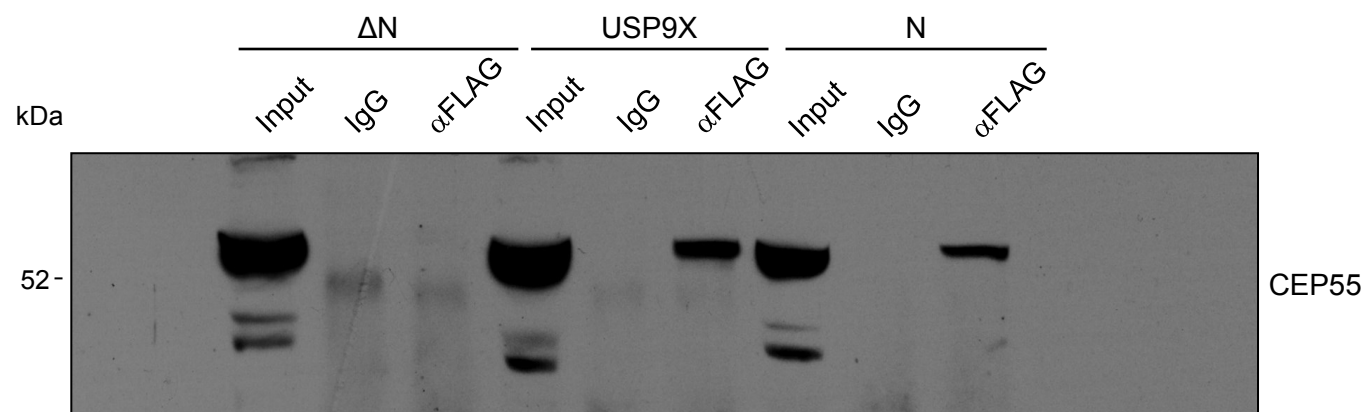
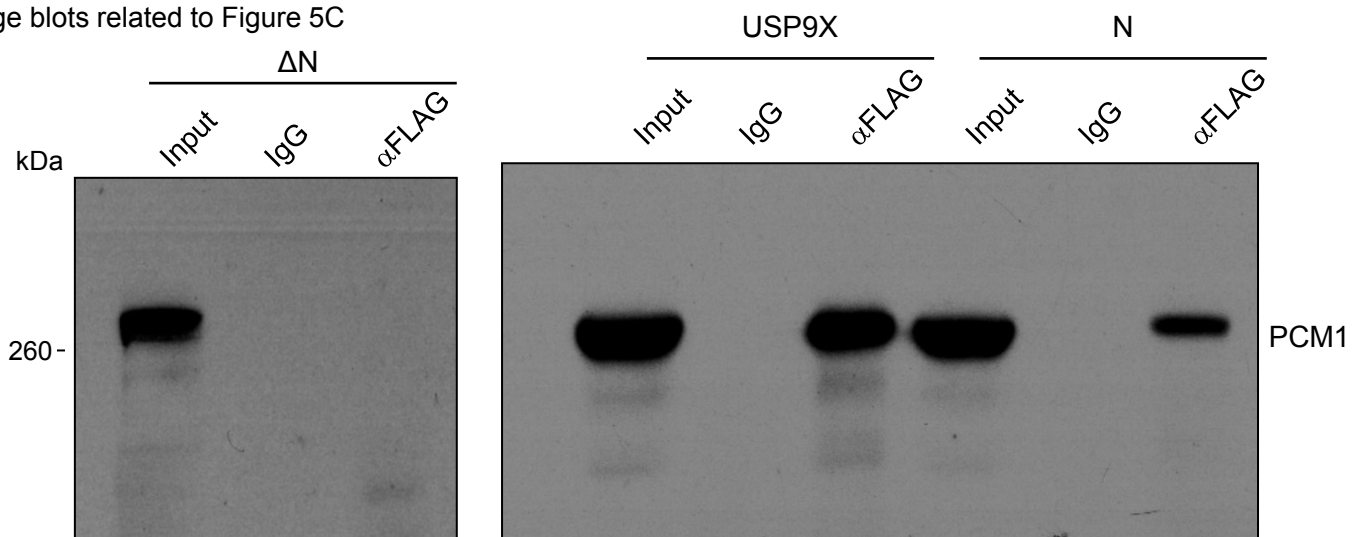




Large blots related to Figure 5B



Large blots related to Figure 5C



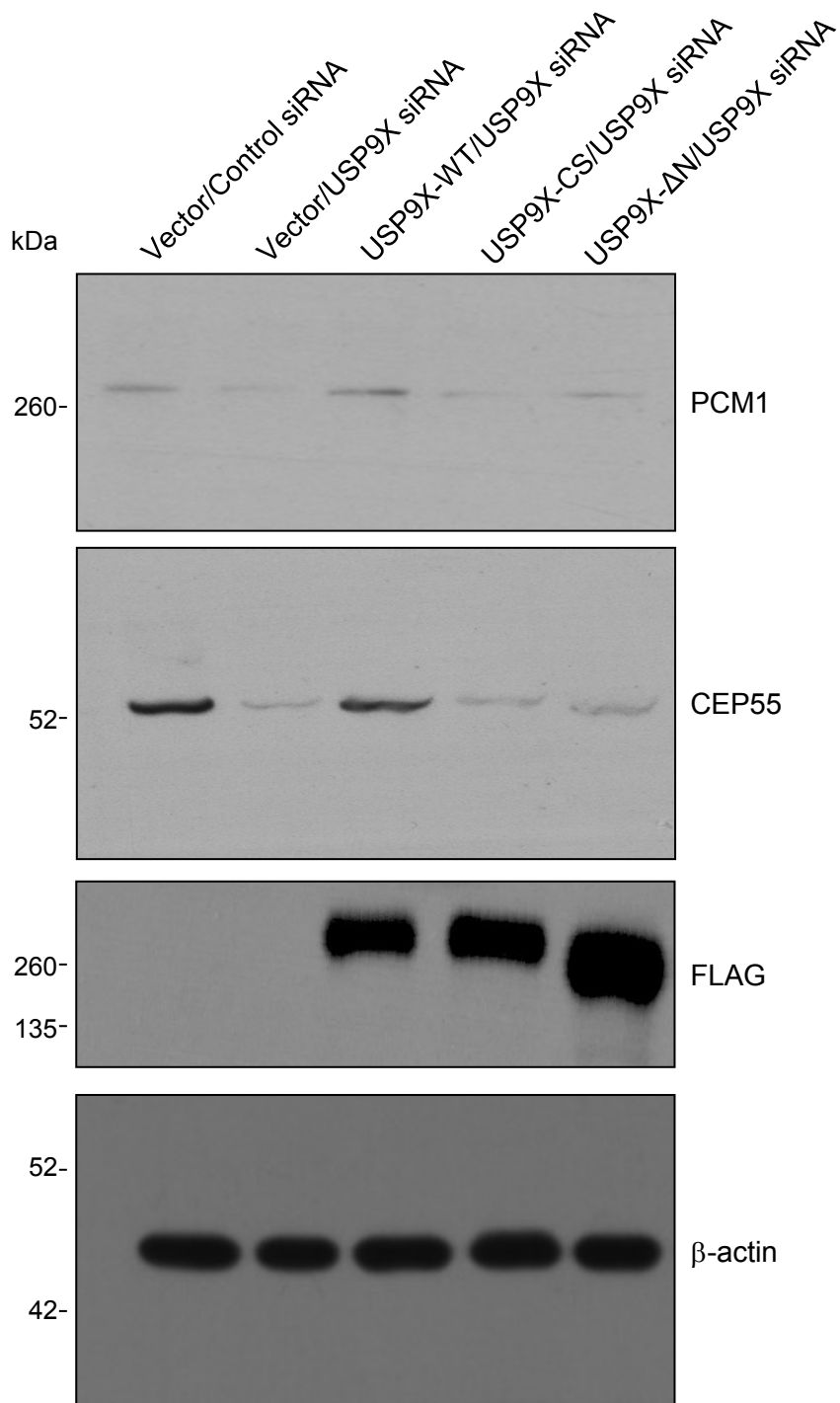


Figure S3. Large Scans for Western Blotting. The relevant figures are indicated in the blot titles. In some blots, both lower and higher exposed ones are provided.

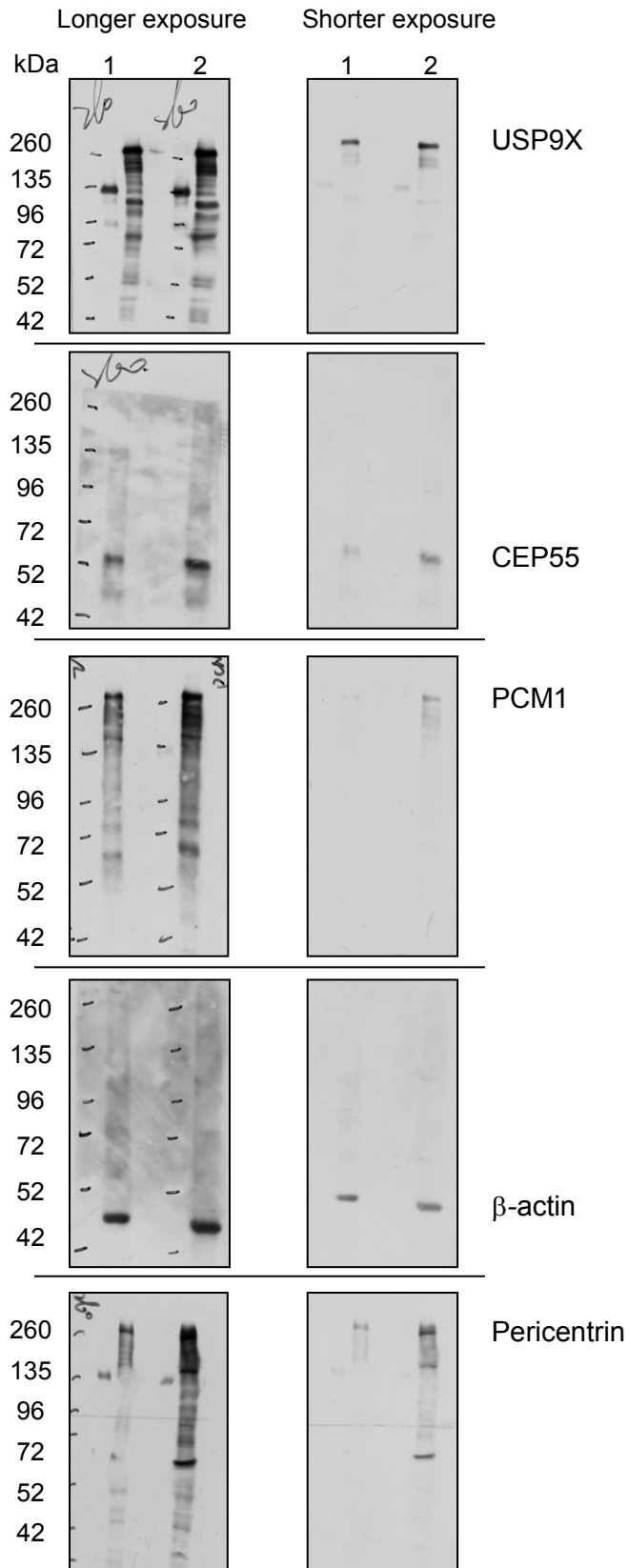


Figure S4. Uncropped blots for antibodies' quality and specificity examination (lane 1, 10 μ g protein from MCF-7 cells; lane 2, 20 μ g protein from MCF-7 cells).