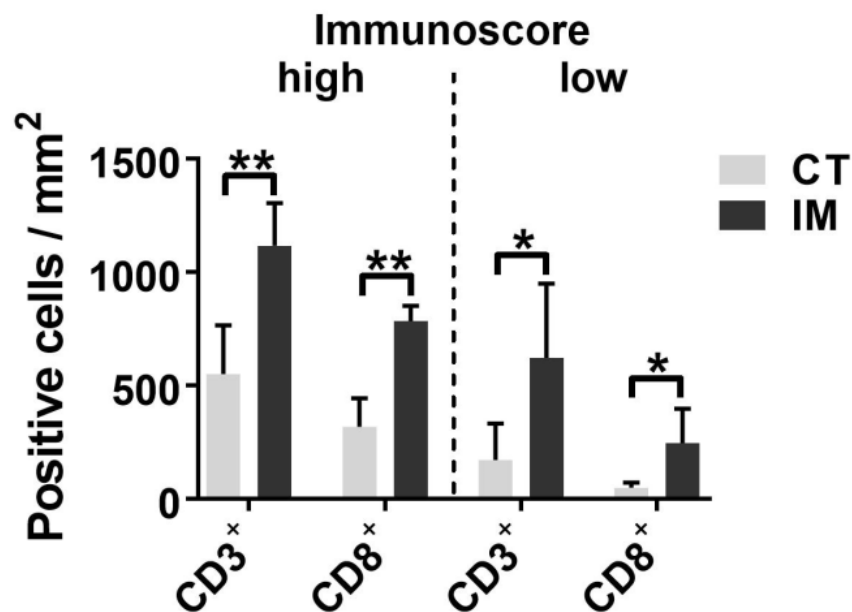


Characterization of tumor-associated T-lymphocyte subsets and immune checkpoint molecules in head and neck squamous cell carcinoma

Supplementary Materials



Supplementary Figure 1: CD3⁺ and CD8⁺ cell densities in 'Immunoscore high/low' HNSCC. Results of automated analysis of CD3 and CD8 immunohistochemistry are summarized. CD3⁺ and CD8⁺ cell numbers per mm² in tumor core (CT) and invasive margin (IM) of tumors classified as 'Immunoscore high' and 'Immunoscore low' are shown in bar graphs (mean value and standard deviation). For statistical analysis, t tests were performed. Data is depicted as mean ± standard deviation. **P* < 0.05; ***P* < 0.005.