

Supplemental Table 1. DK atlas and QIDS score

	QIDS only		Model 1: Covariates only		Model 2: Adds QIDS		Model 3a: Adds Age x QIDS		Model 3b: Adds Gender X QIDS	
	L	R	L	R	L	R	L	R	L	R
	r		r ² %		Δ r ² %		Δ r ² %		Δ r ² %	
Bankssts	-0.13	-0.14	19.08	19.89	0.64	0.21	3.53**	0.17	0.03	0.23
Caudal Anterior Cingulate	-0.15	-0.09	16.03	12.51	0.85	0.31	0.12	0.01	0.50	0.79
Caudal Middle Frontal	-0.13	-0.13	23.51	24.26	1.54	1.65	0.33	1.87*	0.54	0.19
Cuneus	-0.02	-0.08	21.50	31.40	0.03	0.41	0.76	0.01	0.01	0.07
Entorhinal	0.12	0.12	14.05	21.62	0.38	0.37	0.31	0.19	0.54	0.00
Frontal Pole	-0.04	0.09	19.42	10.60	0.03	0.74	0.20	3.53*	0.00	1.55
Fusiform	-0.03	-0.01	26.29	24.46	0.19	0.01	0.50	0.12	1.06	0.40
Inferior Parietal	-0.13	-0.11	15.44	20.90	1.11	0.79	0.62	0.08	0.00	0.14
Inferior Temporal	0.02	-0.13	14.43	17.89	0.00	2.94*	0.01	0.01	0.09	0.02
Insula	0.00	-0.05	19.01	27.95	0.06	0.07	0.00	0.09	0.44	0.00
Isthmus Cingulate	-0.05	-0.04	17.45	14.34	0.15	0.15	0.90	0.00	0.12	0.06
Lateral Occipital	-0.06	-0.10	11.88	10.28	0.55	0.58	0.23	0.19	0.38	0.16
Lateral Orbitofrontal	0.01	-0.04	23.90	23.22	0.15	0.66	0.70	0.00	0.03	0.06
Lingual	0.00	-0.01	37.98	35.62	0.01	0.04	0.56	0.57	2.08*	0.56
Medial Orbitofrontal	-0.02	0.05	26.72	28.49	0.15	0.01	0.02	0.54	0.20	0.37
Middle Temporal	-0.12	-0.22**	28.31	21.36	0.56	4.28**	1.23	0.01	0.01	0.06
Paracentral	-0.07	-0.13	29.69	33.13	0.45	1.39	0.11	0.35	0.24	0.61
Parahippocampal	0.02	0.02	10.34	18.53	0.01	0.00	0.58	0.07	2.96*	1.83
Pars Opercularis	-0.10	-0.15	28.41	19.08	0.17	0.90	1.56	0.02	0.49	0.14
Pars Orbitalis	-0.11	-0.04	27.08	17.64	1.33	0.04	1.50	0.29	1.07	0.26
Pars Triangularis	-0.11	-0.08	29.92	26.69	0.56	0.06	0.18	0.04	0.13	0.09
Pericalcarine	0.04	-0.02	38.73	35.87	0.41	0.07	0.63	1.91*	0.17	0.00
Postcentral	-0.09	-0.08	18.05	17.07	0.55	0.84	0.26	0.02	0.00	0.11
Posterior Cingulate	-0.04	-0.14	27.38	23.97	0.05	1.53	0.14	0.04	1.14	0.23
Precentral	-0.18*	-0.14	26.64	24.19	1.44	0.81	0.00	0.01	0.33	0.53

Precuneus	-0.16*	-0.12	20.08	21.36	1.20	0.56	0.40	0.00	0.07	0.22
Rostral Anterior Cingulate	-0.13	-0.04	15.15	12.14	1.12	0.01	0.07	0.00	0.00	0.40
Rostral Middle Frontal	-0.11	-0.12	32.00	30.45	1.26	1.43	0.21	0.32	0.32	0.71
Superior Frontal	-0.17*	-0.15	32.81	29.75	1.98*	2.00*	1.28	1.03	0.03	0.67
Superior Parietal	-0.16*	-0.07	14.95	11.52	1.42	0.08	0.46	0.01	0.00	0.05
Superior Temporal	-0.14	-0.11	20.20	29.99	0.65	0.26	0.13	0.21	0.06	0.20
Supramarginal	-0.16*	-0.07	21.38	16.79	1.48	0.35	0.19	0.13	0.08	0.08
Temporal Pole	0.03	-0.06	6.77	2.63	0.26	0.50	0.40	1.78	0.49	0.08
Transverse Temporal	-0.09	0.03	16.35	18.84	0.46	0.06	0.00	1.32	0.45	0.05
Mean			22.09	21.60	0.62	0.71	0.53	0.44	0.41	0.32

Model 1 presents Total R squared for a model including age, age² gender, education, and imaging site. Model 2 presents the delta R-squared when adding QIDS score. Model 3a and 3b present the increment in r² from the interaction term. * = p < .05, ** = p < .01. Cortical thickness is expressed in millimeters.

Supplemental Table 2. DS atlas and QIDS score

	QIDS only		Model 1: Covariates only		Model 2: Adds QIDS		Model 3a: Adds Age x QIDS		Model 3b: Adds Gender X QIDS	
	L	R	L	R	L	R	L	R	L	R
	r		r ² %		Δ r ² %		Δ r ² %		Δ r ² %	
Ins lg S cent ins	-0.11	0.04	11.22	19.46	0.59	0.31	0.19	0.80	2.32*	0.52
S Cingul Ant	-0.10	-0.05	16.31	25.92	1.20	0.19	0.55	0.35	0.90	1.04
S Cingul MidAnt	-0.21**	-0.10	29.12	25.69	3.13**	1.24	0.07	0.67	0.14	0.14
S Cingul MidPost	-0.11	-0.13	33.87	35.89	0.41	0.83	0.30	0.03	0.31	0.21
S frontomargin	-0.09	0.02	20.70	19.55	1.70	0.07	0.00	1.88	1.65	1.49
S Occipital Inf	0.00	-0.07	7.80	10.82	0.01	0.57	0.27	0.05	0.00	0.06
S Paracentral	-0.03	-0.06	23.00	24.78	0.14	0.28	0.18	0.03	0.02	0.21
S Subcentral	-0.12	-0.11	20.78	16.31	0.50	0.30	0.20	0.95	0.10	0.48
S Transv Fronto pol	-0.11	-0.09	18.36	16.92	1.05	0.99	0.04	0.32	0.84	1.75
Cingul Postdorsal	-0.08	-0.04	22.70	20.35	0.28	0.00	0.19	0.51	0.54	0.00
Cingul Postventral	-0.07	-0.04	10.10	20.70	0.61	0.55	0.08	0.01	0.00	0.23
Cuneus	0.01	-0.04	25.73	35.88	0.03	0.21	0.72	0.01	0.35	0.12
Front Inf Opercular	-0.02	-0.14	27.59	21.82	0.09	1.14	2.48*	0.07	0.92	0.00
Front Inf Orbital	-0.01	-0.09	10.88	13.33	0.00	0.80	0.48	2.62*	0.72	2.72*
Front Inf Triangul	-0.16	-0.11	28.17	20.63	1.68	0.86	0.18	0.10	0.16	0.01
Front Middle	-0.07	-0.13	31.57	27.80	0.60	1.32	0.05	0.56	0.15	0.09
Front Sup	-0.16	-0.13	33.20	28.56	1.91*	1.54	1.35	1.19	0.01	0.24
Insular Short	-0.02	-0.09	11.67	17.28	0.05	0.44	0.41	0.29	0.78	0.00
Octemp Lat Fusifor	-0.06	-0.02	22.98	21.73	0.30	0.01	0.14	0.01	1.98*	1.03
Octemp Med Lingual	0.01	0.02	32.66	35.68	0.05	0.05	0.47	0.26	1.87*	0.43
Octemp Med Parahip	0.08	0.01	16.15	20.46	0.19	0.11	0.03	0.82	0.63	0.19
Occipital Middle	-0.11	-0.12	4.35	8.02	1.76	0.85	0.09	0.87	0.34	0.10
Occipital Sup	-0.12	-0.06	10.39	6.56	0.46	0.04	0.07	0.02	0.61	0.11
Orbital	0.01	-0.02	37.07	28.55	0.28	0.47	0.54	0.01	0.19	0.01

Pariet Inf Angular	-0.11	-0.07	12.06	22.60	0.94	0.16	0.02	0.03	0.06	0.63
Pariet Inf Supramar	-0.14	-0.03	15.92	18.54	1.67	0.24	0.25	0.04	0.11	0.00
Parietal Sup	-0.19*	-0.06	11.04	9.88	2.70*	0.18	0.15	0.03	0.20	0.00
Postcentral	-0.10	-0.12	12.17	13.15	0.89	1.62	0.31	0.11	0.02	0.00
Precentral	-0.15	-0.16*	16.21	14.21	0.67	1.13	0.03	0.61	0.53	0.30
Precuneus	-0.17*	-0.08	15.11	12.94	1.74	0.48	0.07	0.02	0.07	0.50
Rectus	0.05	0.03	40.21	48.11	0.08	0.28	0.62	0.26	0.50	0.01
Subcallosal	0.06	0.05	9.43	12.22	0.17	0.19	0.03	0.69	0.46	0.02
Temp sup G T Transv	-0.08	0.05	12.07	17.85	0.69	0.14	0.01	1.61	0.06	0.12
Temp Sup Lateral	-0.10	-0.03	13.11	21.72	0.28	0.11	0.34	0.10	0.18	0.51
Temp Sup Plan polar	-0.04	-0.09	13.56	12.74	0.00	0.40	0.14	0.03	0.02	0.03
Temp Sup Plan tempo	-0.21**	-0.08	8.03	15.81	2.39*	0.23	0.09	0.95	0.03	0.00
Temporal Inf	-0.03	-0.10	17.98	23.74	0.28	2.49*	0.08	0.15	0.52	0.46
Temporal Middle	-0.13	-0.17*	25.68	25.34	0.89	2.81*	1.91*	0.01	0.43	0.00
Lat Fis Ant Horizont	0.01	-0.04	11.40	15.29	0.24	0.08	0.95	0.40	0.13	0.01
Lat Fis Ant Vertical	-0.17*	-0.02	19.19	11.87	1.01	0.24	0.68	0.02	0.00	0.21
Lat Fispost	-0.17*	-0.07	20.58	24.41	1.41	0.05	0.07	0.21	0.06	0.15
Pole Occipital	-0.02	-0.03	12.50	17.34	0.33	0.01	0.52	2.87*	1.13	0.02
Pole Temporal	0.01	-0.01	14.35	6.82	0.00	0.17	0.29	0.44	0.01	0.29
S calcarine	0.00	-0.03	41.19	34.98	0.15	0.00	0.04	0.93	0.12	0.19
S central	-0.05	-0.01	32.63	30.15	0.12	0.01	0.02	0.02	0.44	0.73
S Cingul Marginalis	-0.09	-0.09	21.28	21.00	0.57	0.33	0.07	0.05	0.02	0.33
S Circular Insula Ant	-0.06	-0.11	13.34	18.12	0.01	0.37	0.19	0.27	0.27	0.73
S Circular Insula Inf	0.03	-0.01	17.74	18.29	0.68	0.05	0.05	0.00	0.27	0.88
S Circular Insula Sup	-0.09	-0.12	27.27	23.71	0.28	0.48	0.17	0.05	0.00	0.04
S Collat Transv Ant	0.15	-0.05	6.34	13.26	1.31	0.47	0.71	0.34	0.05	0.30
S Collat Transv Post	-0.04	-0.15	17.52	9.12	0.00	1.43	0.69	0.02	2.77*	0.00
S Front Inf	-0.16*	-0.13	22.12	18.84	1.71	0.70	0.11	0.14	0.17	0.35
S Front Middle	-0.01	-0.06	17.99	26.37	0.00	0.49	2.16*	0.02	0.81	0.18
S Front Sup	-0.06	-0.15	18.86	15.11	0.22	2.20*	1.06	0.46	0.36	0.01
S Interm Prim Jensen	-0.13	-0.01	9.29	10.18	0.85	0.23	0.01	0.00	0.11	0.00

S Intrapariet P Trans	-0.14	-0.09	11.06	7.10	0.86	0.38	0.25	0.00	0.01	0.00
S Octemp Lat	-0.09	-0.02	6.84	18.79	0.27	0.00	0.31	0.41	0.01	0.17
S Octemp Med Lingual	-0.03	-0.01	29.24	25.37	0.05	0.00	0.23	0.02	0.22	0.16
S OC Middle Lunatus	0.00	-0.14	12.45	3.56	0.00	1.30	1.08	0.15	0.64	0.95
S OC Sup Transversal	-0.08	-0.09	10.28	10.01	0.12	0.06	0.05	0.28	1.25	0.09
S Occipital Ant	-0.05	-0.23**	6.44	10.70	0.36	5.29**	4.41**	0.11	0.08	0.03
S Orbital H Shaped	-0.06	-0.04	9.45	23.55	0.40	0.19	2.35*	0.44	0.56	0.46
S Orbital Lateral	-0.22**	0.09	15.94	15.66	3.98**	0.30	0.07	0.13	1.38	0.01
S Orbital Med olfact	-0.05	0.02	16.45	22.32	1.01	0.13	0.00	0.21	0.01	0.09
S Parieto Occipital	-0.11	-0.12	16.83	17.01	0.36	0.39	0.23	0.03	0.43	0.25
S Pericallosal	-0.05	-0.09	13.82	13.83	0.00	0.57	0.21	0.03	1.04	0.11
S Postcentral	-0.09	-0.02	19.86	13.06	0.37	0.04	2.16*	0.06	0.03	0.44
S Precentral Inf Part	-0.19*	-0.20*	33.00	23.12	2.06*	2.31*	0.11	1.39	0.37	0.01
S Precentral Sup Part	-0.16*	-0.11	20.74	26.63	2.34*	1.33	0.25	0.37	0.41	0.00
S Suborbital	-0.12	-0.03	15.72	6.88	0.20	0.02	0.35	0.01	0.08	0.02
S Subparietal	-0.09	-0.10	15.29	22.09	0.30	0.47	1.84	0.00	0.27	0.10
S Temporal Inf	0.01	-0.18*	15.58	6.64	0.01	3.76**	0.00	0.23	0.95	0.18
S Temporal Sup	-0.10	-0.18*	27.18	25.99	0.26	1.43	2.32*	0.06	0.03	0.00
S Temporal Transverse	-0.18*	-0.08	15.92	13.14	2.25*	0.40	0.39	0.66	0.03	0.15
Mean			18.44	19.08	0.74	0.67	0.51	0.38	0.45	0.29

Model 1 presents Total R squared for a model including age, age² gender, education, and imaging site. Model 2 presents the delta R-squared when adding QIDS score. Model 3a and 3b present the increment in r² from the interaction term. * = p < .05, ** = p < .01. Cortical thickness is expressed in millimeters.

Supplemental Figure Legends

Figure 1. Gender x Depression diagnosis interaction ($p < 0.01$) in the Left Cuneus defined by the Desikan-Killiany atlas.

Figure 2. Gender x Depression diagnosis interaction ($p < 0.01$) in the Right Lingual defined by the Desikan-Killiany atlas.

Figure 3. Age x Depression severity interaction ($p < 0.01$) in the Left Bankssts defined by the Desikan-Killiany atlas.

Figure 4. Age x Depression diagnosis interaction ($p < 0.01$) in the Left G Occipital Middle defined by the Destrieux atlas.

Figure 5. Gender x Depression diagnosis interaction ($p < 0.01$) in the Left Temp Sup Plan Tempo defined by the Destrieux atlas.

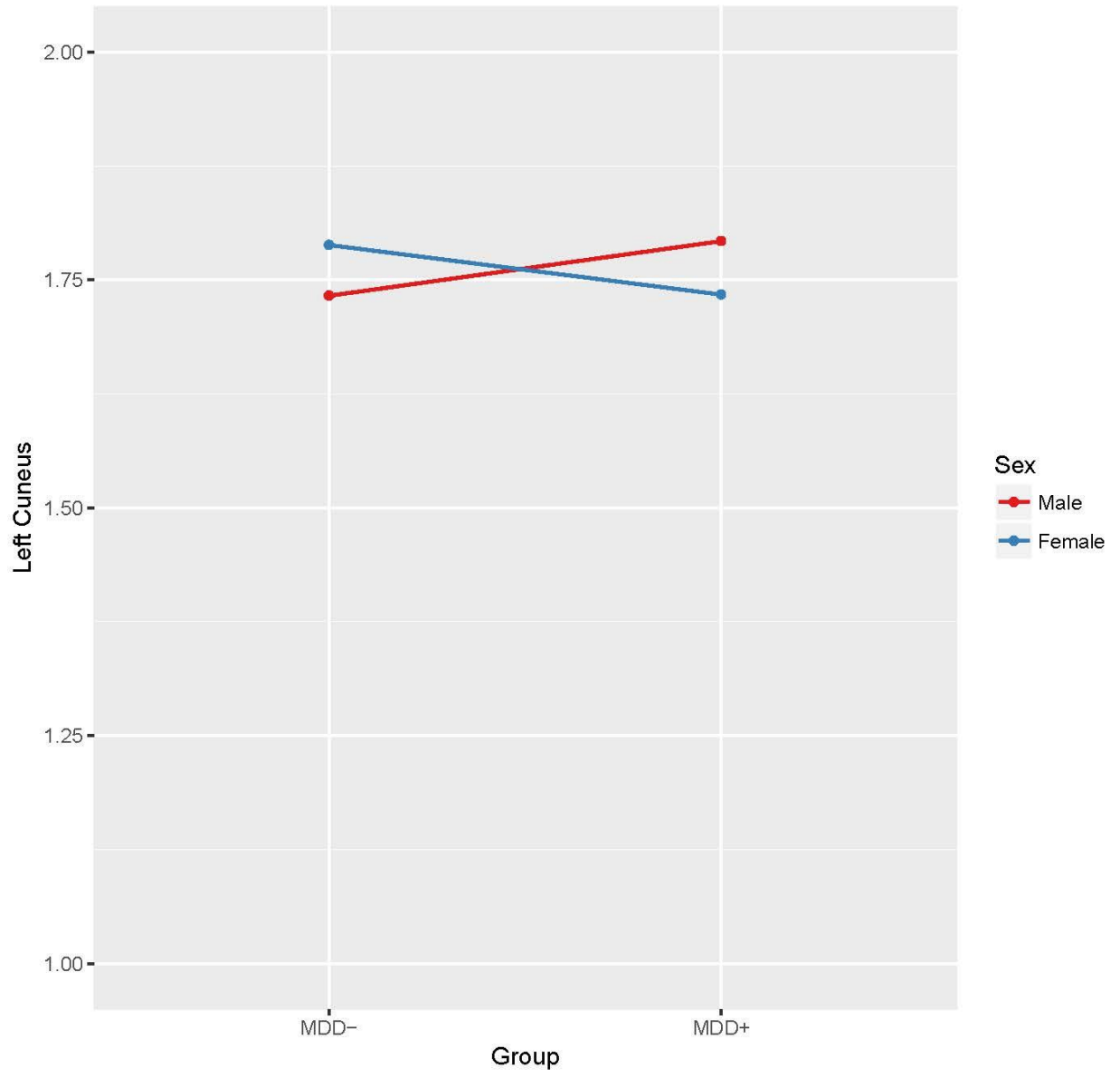
Figure 6. Gender x Depression diagnosis interaction ($p < 0.01$) in the Left S Calcerine defined by the Destrieux atlas.

Figure 7. Gender x Depression diagnosis interaction ($p < 0.01$) in the Right Octemp Med Lingual defined by the Destrieux atlas.

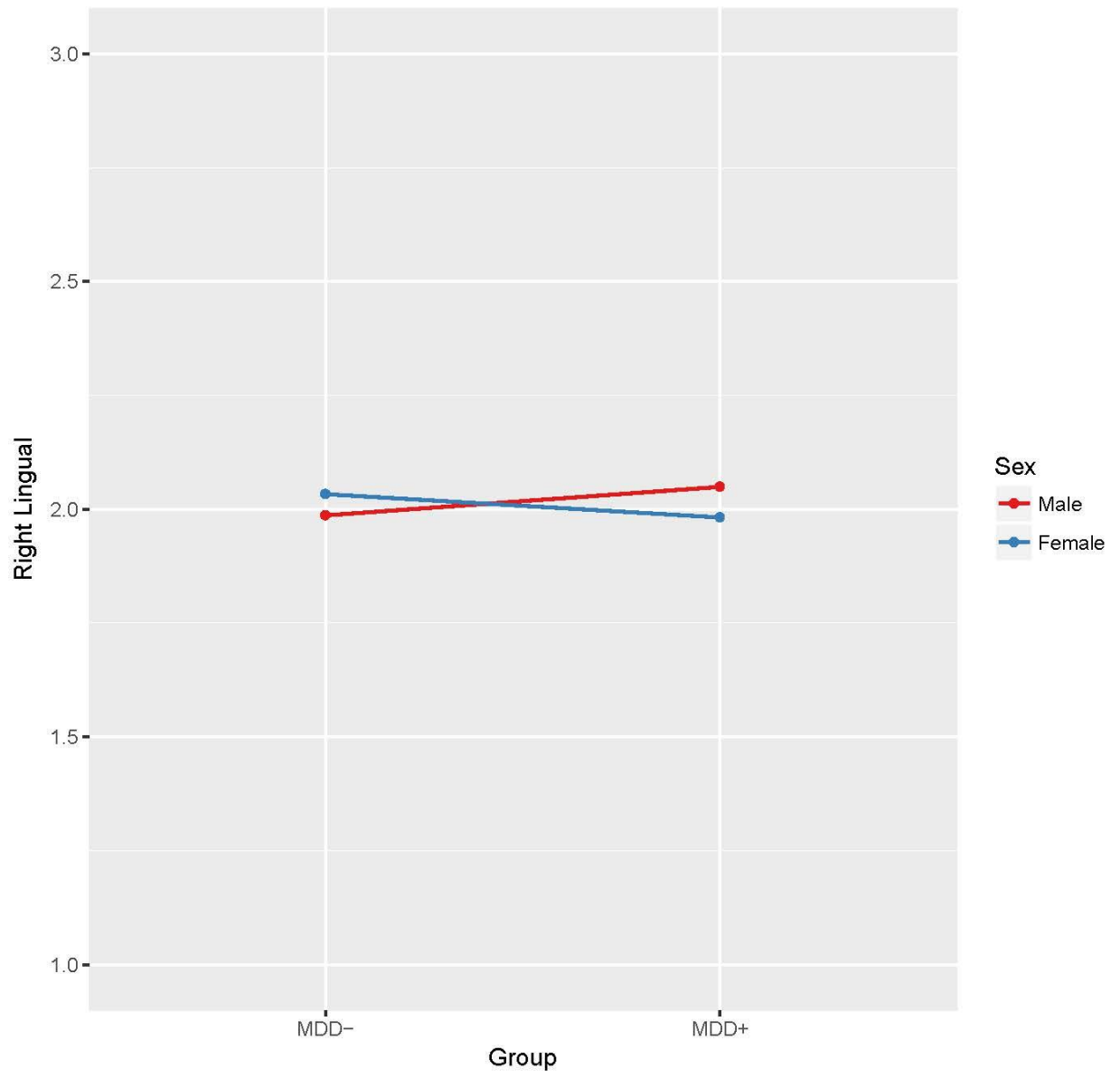
Figure 8. Gender x Depression diagnosis interaction ($p < 0.01$) in the Right S Temporal Transverse defined by the Destrieux atlas.

Figure 9. Age x Depression severity interaction ($p < 0.01$) in the Left S Occipital Ant defined by the Destrieux atlas.

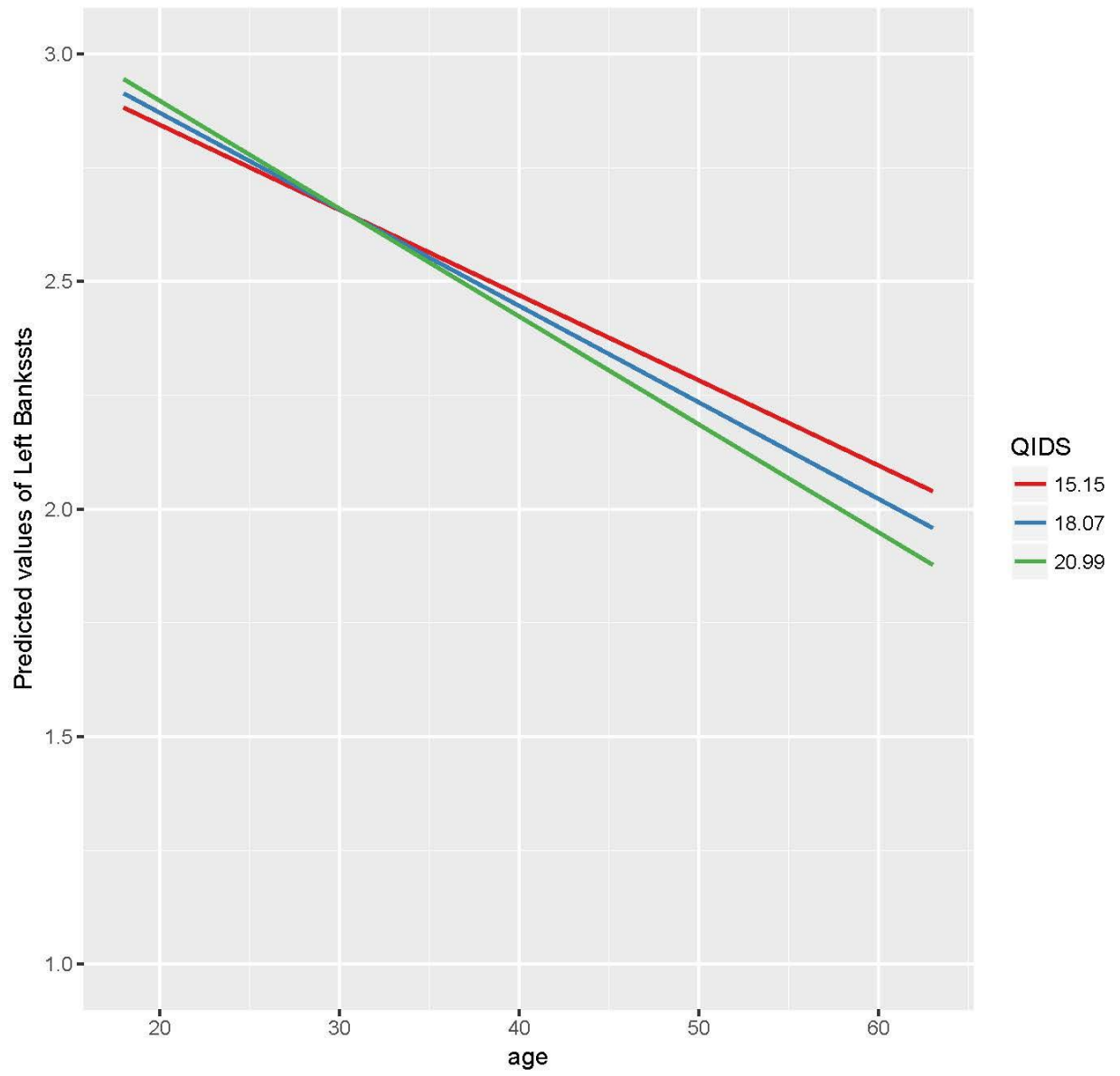
Freesurfer Desikan-Killiany (DK) atlas



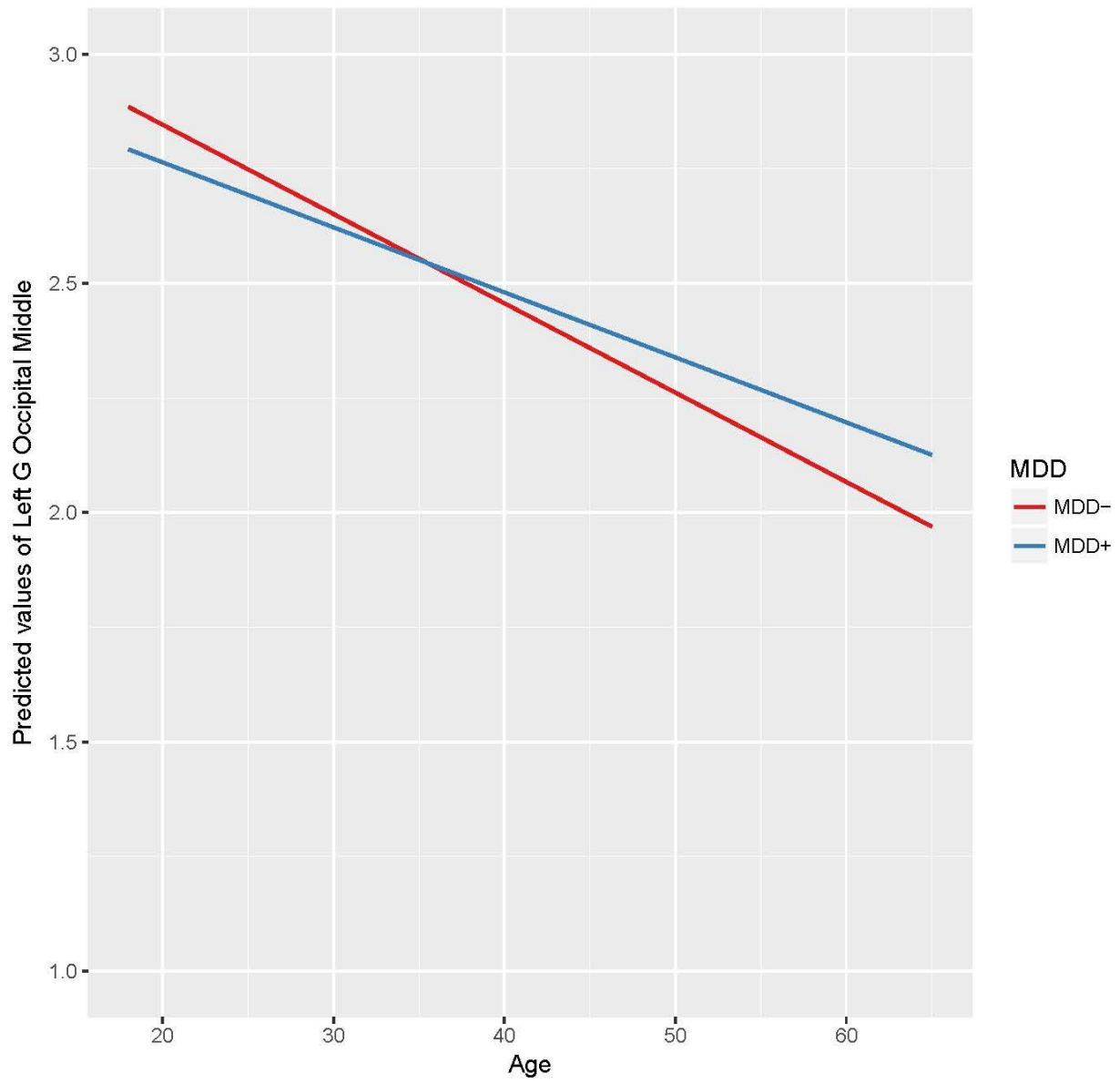
Freesurfer Desikan-Killiany (DK) atlas



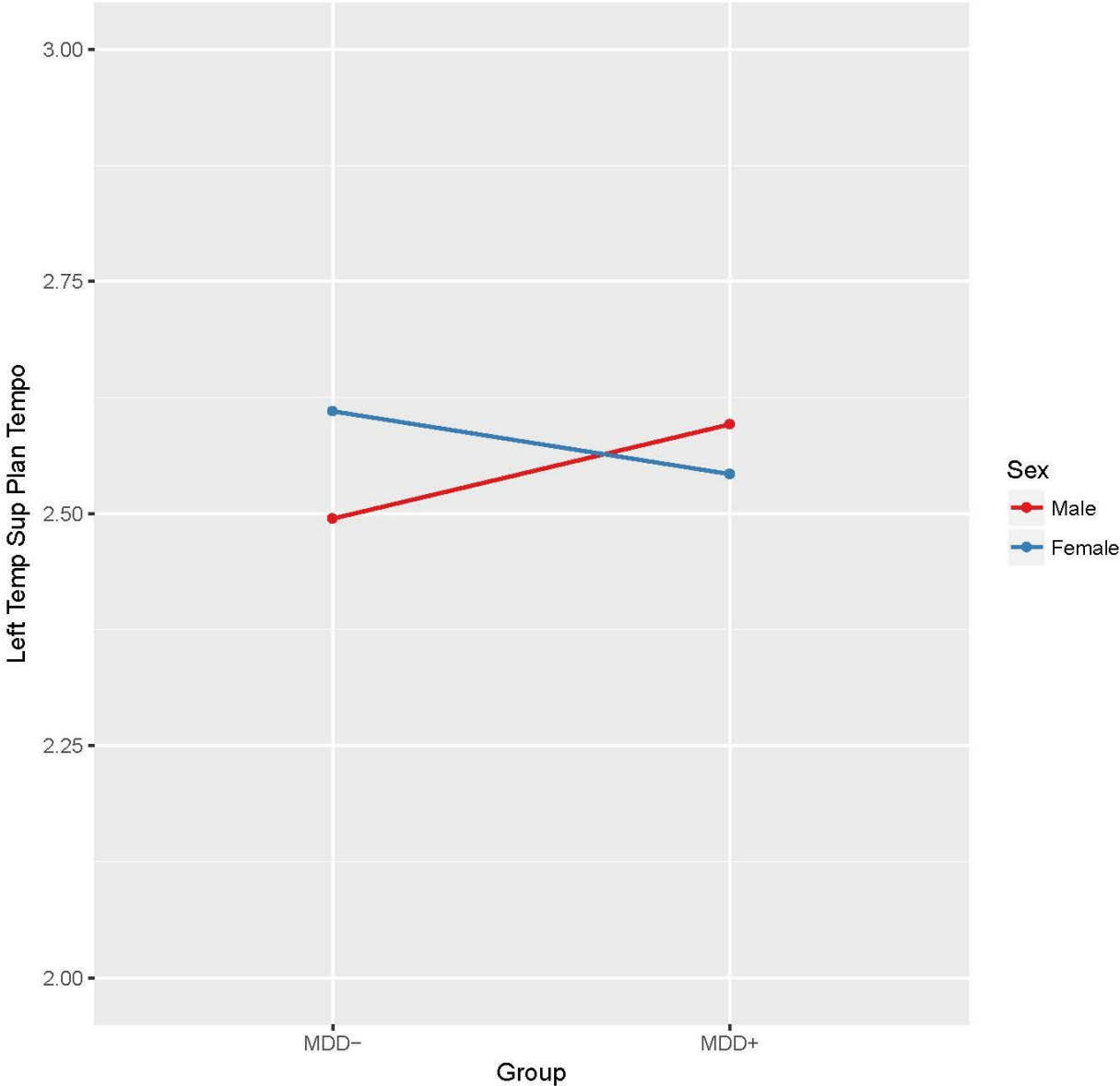
Freesurfer Desikan-Killiany (DK) atlas



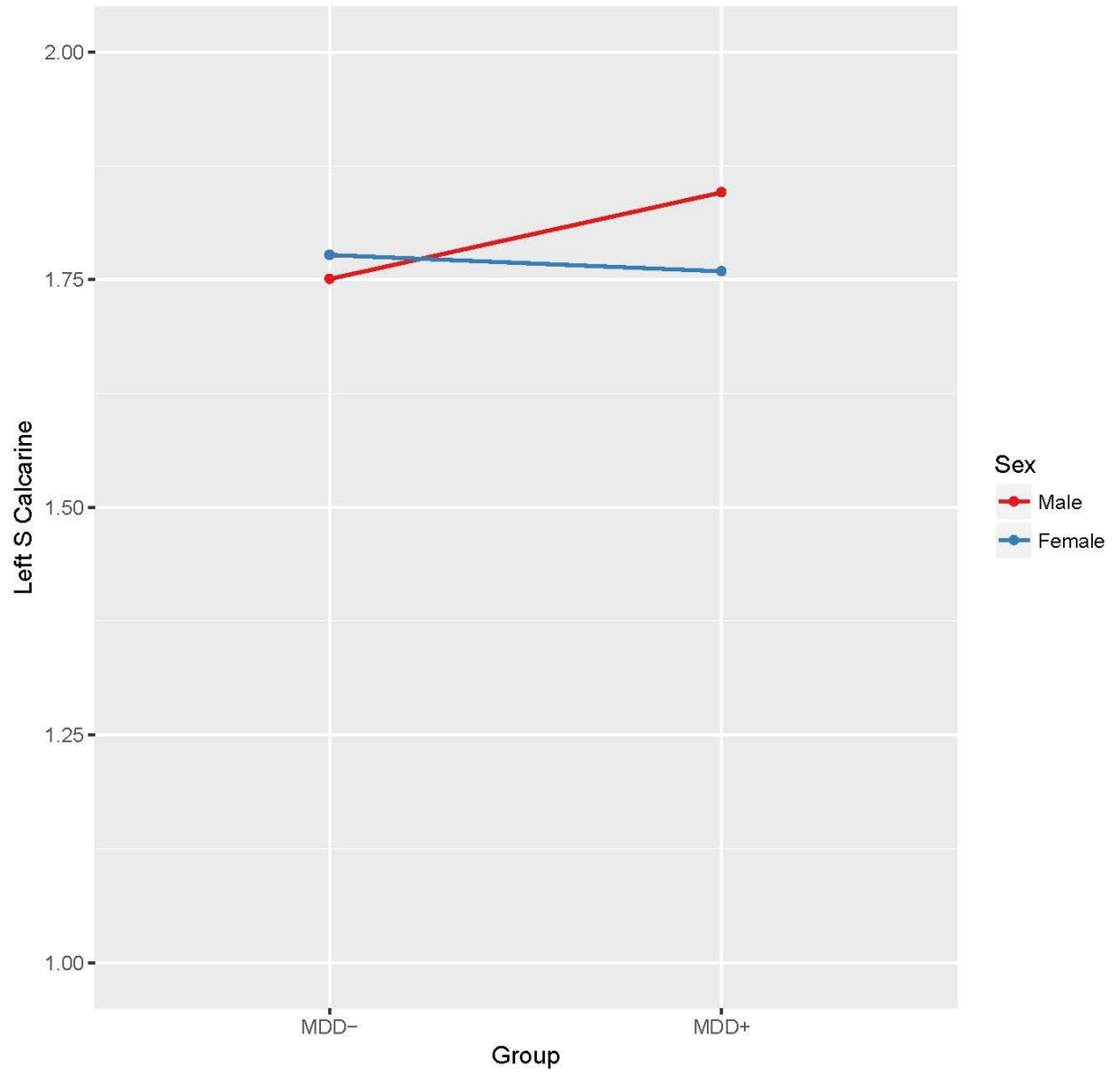
Freesurfer Destrieux (DS) atlas



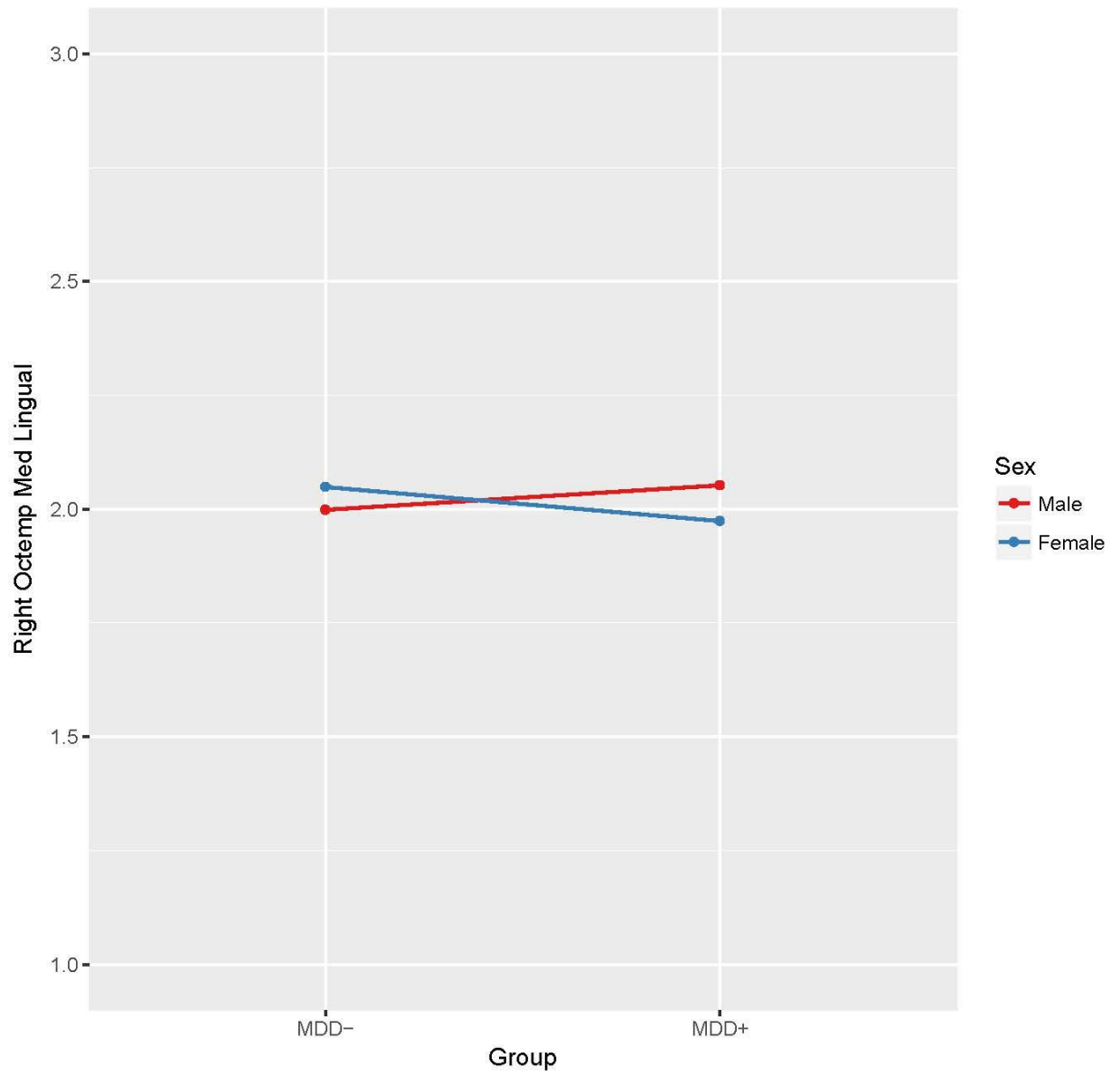
Freesurfer Destrieux (DS) atlas



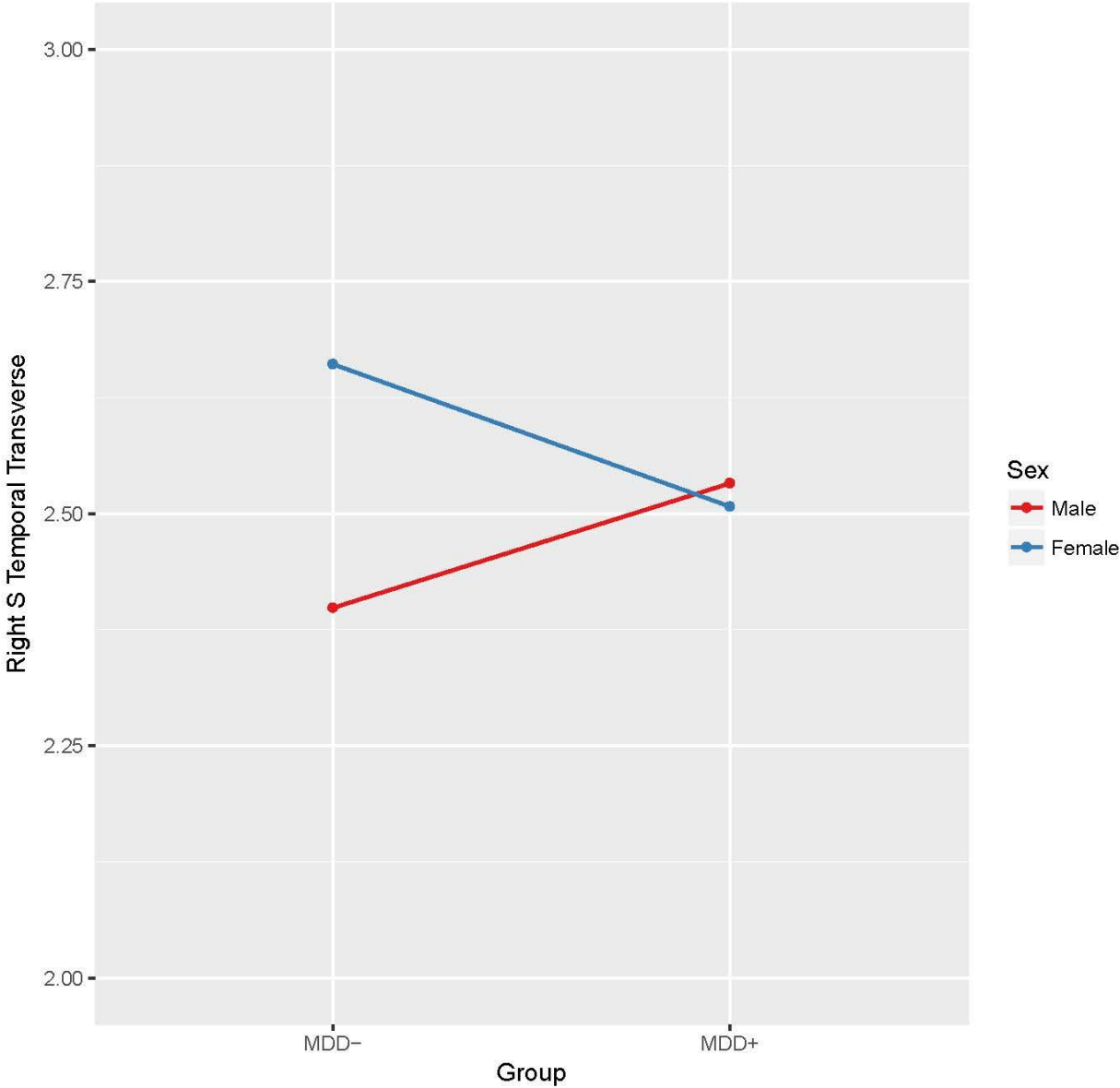
Freesurfer Destrieux (DS) atlas



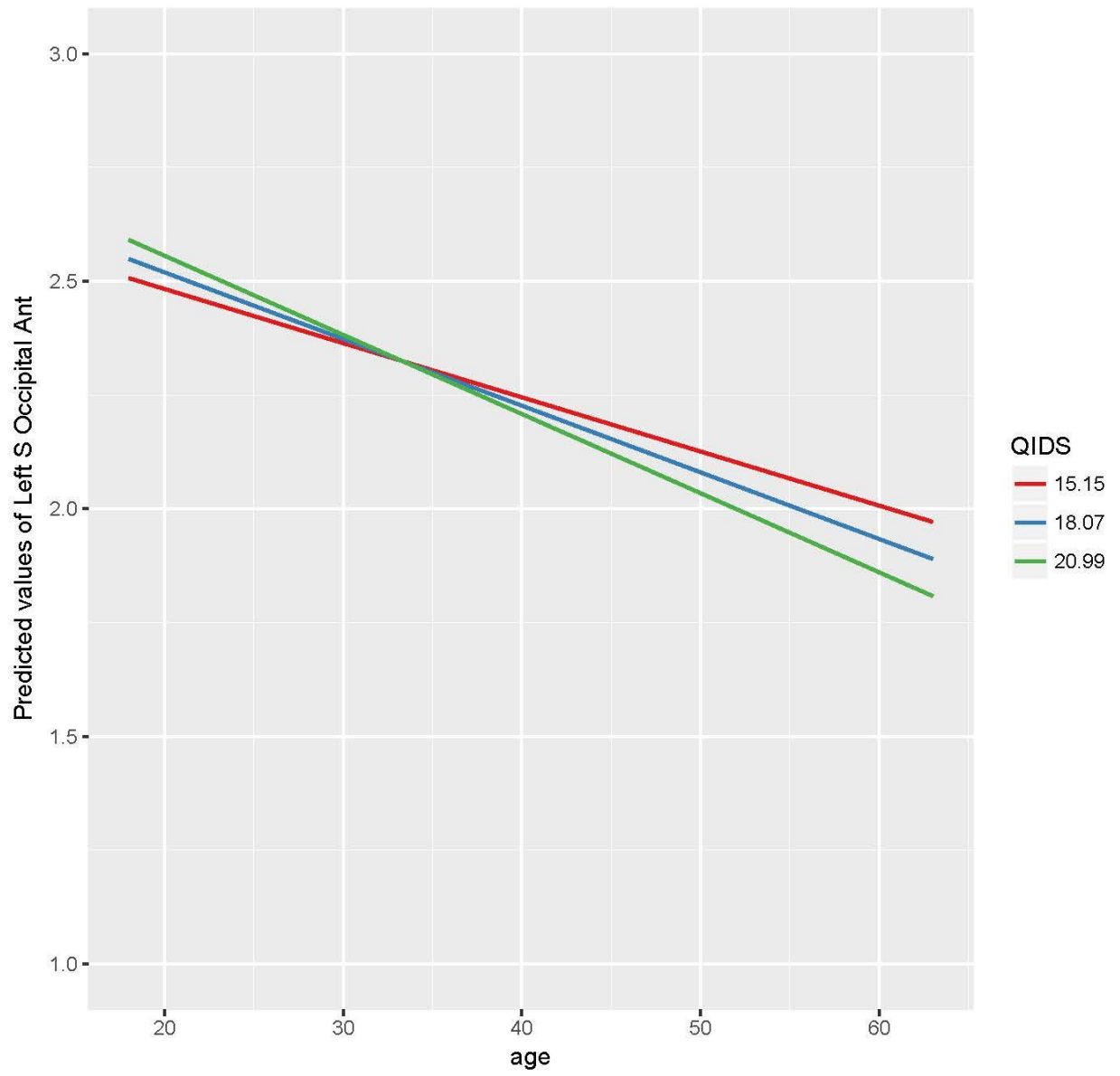
Freesurfer Destrieux (DS) atlas



Freesurfer Destrieux (DS) atlas



Freesurfer Destrieux (DS) atlas



Acknowledgments

The EMBARC study was supported by the National Institute of Mental Health of the National Institutes of Health under award numbers U01MH092221 (Trivedi, M.H.) and U01MH092250 (McGrath, P.J., Parsey, R.V., Weissman, M.M.). The content is solely the responsibility of the authors and does not necessarily represent the official views of the National Institutes of Health. Valeant Pharmaceuticals donated the Wellbutrin XL used in the study. This work was supported by the EMBARC National Coordinating Center at UT Southwestern Medical Center, Madhukar H. Trivedi, M.D., Coordinating PI, and the Data Center at Columbia and Stony Brook Universities. We thank Randy Buckner for providing comments on earlier draft of the manuscript.

Financial Disclosures

- Dr. Perlman reported no biomedical financial interests or potential conflicts of interest.
- Elizabeth Bartlett reports no biomedical financial interests or potential conflicts of interest.
- Dr. DeLorenzo reports no biomedical financial interests or potential conflicts of interest.
- Dr. Weissman receives royalties from the Oxford University Press, Perseus Press, the American Psychiatric Association Press, and MultiHealth Systems.
- Dr. McGrath has received research support from National Institute of Mental Health, New York State Department of Mental Hygiene, Research Foundation for Mental Hygiene (New York State), Forest Research Laboratories, Sunovion Pharmaceuticals, Naurex Pharmaceuticals (now Allergan).
- Tony Jin reported no biomedical financial interests or potential conflicts of interest.
- Dr. Adams reported no biomedical financial interests or potential conflicts of interest.
- Dr. Trivedi is or has been an advisor/consultant and received fee from Alkermes, AstraZeneca, Cerecor, Eli Lilly & Company, Lundbeck, Naurex, Neuronetics, Otsuka Pharmaceuticals, PamLab, Pfizer Inc., SHIRE Development and Takeda.
- Dr. Kurian has received grant support from Targacept, Inc.; Pfizer, Inc.; Johnson & Johnson; Evotec; Rexahn; Naurex; and Forest Pharmaceuticals.
- Dr. Fava has received research support from Abbot Laboratories; Alkermes, Inc.; American Cyanamid; Aspect Medical Systems; AstraZeneca; Avanir Pharmaceuticals; BioResearch; BrainCells Inc.; Bristol-Myers Squibb; CeNeRx BioPharma; Cephalon; Cerecor; Clintara, LLC; Covance; Covidien; Eli Lilly and Company; EnVivo Pharmaceuticals, Inc.; Euthymics Bioscience, Inc.; Forest Pharmaceuticals, Inc.; Ganeden Biotech, Inc.; GlaxoSmithKline; Harvard Clinical Research Institute; Hoffman-LaRoche; Icon Clinical Research; i3 Innovus/Ingenix; Janssen R&D, LLC; Jed Foundation; Johnson & Johnson Pharmaceutical Research & Development; Lichtwer Pharma GmbH; Lorex Pharmaceuticals; Lundbeck Inc.; MedAvante; Methylation Sciences Inc; National Alliance for Research on Schizophrenia & Depression (NARSAD); National Center for Complementary and Alternative Medicine (NCCAM); National Institute of Drug Abuse (NIDA); National Institute of Mental Health (NIMH); Neuralstem, Inc.; Novartis AG; Organon Pharmaceuticals; PamLab, LLC.; Pfizer Inc.; Pharmacia-Upjohn; Pharmaceutical Research Associates., Inc.; Pharmavite® LLC; Pharmorx Therapeutics; Photothera; Reckitt Benckiser; Roche Pharmaceuticals; RCT Logic, LLC (formerly Clinical Trials Solutions, LLC); Sanofi-Aventis US LLC; Shire; Solvay Pharmaceuticals, Inc.; Stanley Medical Research Institute (SMRI); Synthelabo; Tal Medical; Wyeth-Ayerst Laboratories; has served on an advisory board or consulted for Abbott Laboratories; Acadia; Affectis Pharmaceuticals AG; Alkermes, Inc.; Amarin Pharma Inc.; Aspect Medical Systems; AstraZeneca; Auspex Pharmaceuticals; Avanir Pharmaceuticals; AXSOME Therapeutics; Bayer AG; Best Practice Project Management, Inc.; Biogen; BioMarin Pharmaceuticals, Inc.; Biovail Corporation; BrainCells Inc; Bristol-

Myers Squibb; CeNeRx BioPharma; Cephalon, Inc.; Cerecor; CNS Response, Inc.; Compellis Pharmaceuticals; Cypress Pharmaceutical, Inc.; DiagnoSearch Life Sciences (P) Ltd.; Dinippon Sumitomo Pharma Co. Inc.; Dov Pharmaceuticals, Inc.; Edgemont Pharmaceuticals, Inc.; Eisai Inc.; Eli Lilly and Company; EnVivo Pharmaceuticals, Inc.; ePharmaSolutions; EPIX Pharmaceuticals, Inc.; Euthymics Bioscience, Inc.; Fabre-Kramer Pharmaceuticals, Inc.; Forest Pharmaceuticals, Inc.; Forum Pharmaceuticals; GenOmind, LLC; GlaxoSmithKline; Grunenthal GmbH; i3 Innovus/Ingenis; Intracellular; Janssen Pharmaceutica; Jazz Pharmaceuticals, Inc.; Johnson & Johnson Pharmaceutical Research & Development, LLC; Knoll Pharmaceuticals Corp.; Labopharm Inc.; Lorex Pharmaceuticals; Lundbeck Inc.; MedAvante, Inc.; Merck & Co., Inc.; MSI Methylation Sciences, Inc.; Naurex, Inc.; Nestle Health Sciences; Neuralstem, Inc.; Neuronetics, Inc.; NextWave Pharmaceuticals; Novartis AG; Nutrition 21; Orexigen Therapeutics, Inc.; Organon Pharmaceuticals; Osmotica; Otsuka Pharmaceuticals; Pamlab, LLC.; Pfizer Inc.; PharmaStar; Pharmavite® LLC.; PharmorX Therapeutics; Precision Human Biolaboratory; Prexa Pharmaceuticals, Inc.; PPD; Puretech Ventures; PsychoGenics; Psylin Neurosciences, Inc.; RCT Logic, LLC (formerly Clinical Trials Solutions, LLC); Rexahn Pharmaceuticals, Inc.; Ridge Diagnostics, Inc.; Roche; Sanofi-Aventis US LLC.; Sepracor Inc.; Servier Laboratories; Schering-Plough Corporation; Solvay Pharmaceuticals, Inc.; Somaxon Pharmaceuticals, Inc.; Somerset Pharmaceuticals, Inc.; Sunovion Pharmaceuticals; Supernus Pharmaceuticals, Inc.; Synthelabo; Taisho Pharmaceutical; Takeda Pharmaceutical Company Limited; Tal Medical, Inc.; Tetragenex Pharmaceuticals, Inc.; TransForm Pharmaceuticals, Inc.; Transcept Pharmaceuticals, Inc.; Vanda Pharmaceuticals, Inc.; VistaGen; speaking/publishing from Adamed, Co; Advanced Meeting Partners; American Psychiatric Association; American Society of Clinical Psychopharmacology; AstraZeneca; Belvoir Media Group; Boehringer Ingelheim GmbH; Bristol-Myers Squibb; Cephalon, Inc.; CME Institute/Physicians Postgraduate Press, Inc.; Eli Lilly and Company; Forest Pharmaceuticals, Inc.; GlaxoSmithKline; Imedex, LLC; MGH Psychiatry Academy/Primedia; MGH Psychiatry Academy/Reed Elsevier; Novartis AG; Organon Pharmaceuticals; Pfizer Inc.; PharmaStar; United BioSource, Corp.; Wyeth-Ayerst Laboratories; has equity holdings from: Compellis; PsyBrain, Inc.; holds patents for Sequential Parallel Comparison Design (SPCD), licensed by MGH to Pharmaceutical Product Development, LLC (PPD); and patent application for a combination of Ketamine plus Scopolamine in Major Depressive Disorder (MDD), licensed by MGH to Biohaven; .

- Dr. Ogden reported no biomedical financial interests or potential conflicts of interest.
- Dr. Cooper reported no biomedical financial interests or potential conflicts of interest.
- Dr. Malchow reported no biomedical financial interests or potential conflicts of interest.
- Dr. Weyandt reported no biomedical financial interests or potential conflicts of interest.
- Dr. Oquendo owns stock in Bristol Myers Squibb.
- Dr. McInnis has consulted with Janssen pharmaceuticals in the past 3 years.
- Dr. Parsey reports no biomedical financial interests or potential conflicts of interest.

