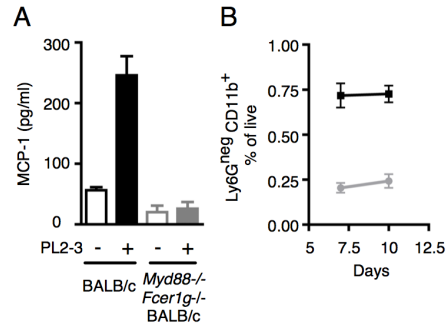
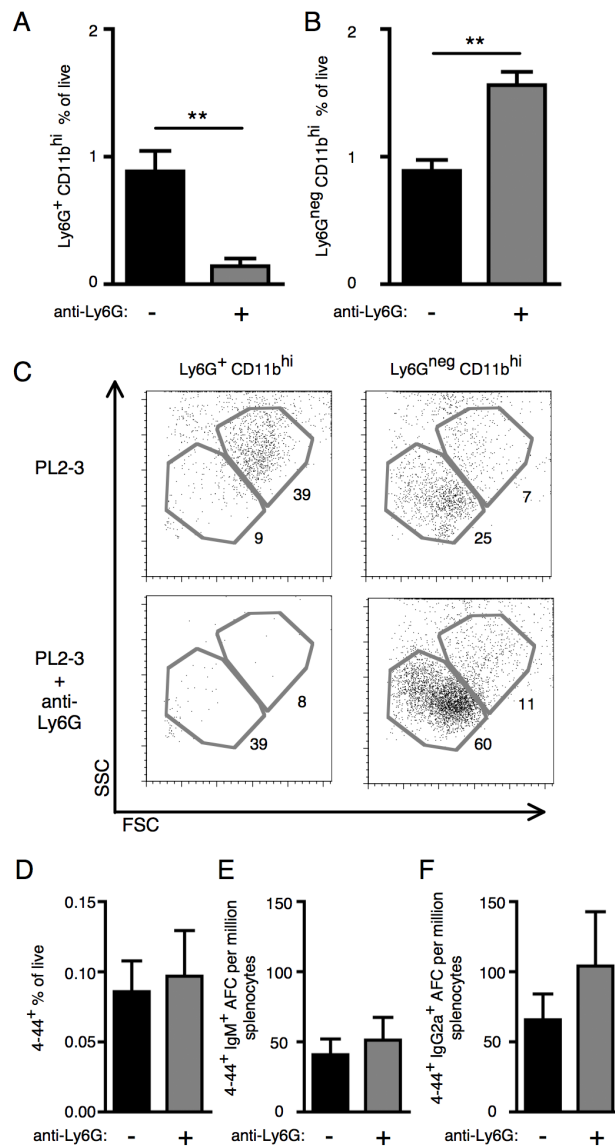


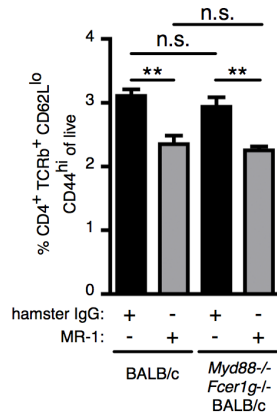
Supplemental Figure 1 - Macrophages in *Myd88*^{-/-} *Fcεr1g*^{-/-} BALB/c mice are deficient in responsiveness to PL2-3 (A-D) CD11b⁺ Ly6G⁻ macrophages in BALB/c (WT) or *Myd88*^{-/-} *Fcεr1g*^{-/-} BALB/c (DKO) mice were analyzed by flow cytometry for expression of (A) CD86, (B) CD40, (C) MHCII or (D) CD80 at d7 following adoptive transfer of AM14 B cells and PL2-3 immunization (AM14 + PL2-3) or in non-transferred, non-immunized controls (d0). (E) CD11b⁺ Ly6G⁻ macrophages were sorted and RNA was prepared for qRT-PCR. Results are expressed relative to unimmunized WT BALB/c (leftmost column).



Supplemental Figure 2 - Anti-chromatin antibody induced serum MCP-1 and macrophages in *Ccr2*-deficient mice. (A) BALB/c or *Myd88*^{-/-} *Fcεr1g*^{-/-} BALB/c were sacrificed on day 5 following transfer of purified AM14 sd-Tg B cells, and administration of PL2-3 as indicated in Materials and Methods. Serum MCP-1 was quantitated by Bio-Plex assay. (B) BALB/c (black squares) or *Ccr2*-deficient BALB/c (gray circles) mice were sacrificed on day 7 or 10 following transfer of purified AM14 sd-Tg B cells and administration of PL2-3 as indicated in Materials and Methods. CD11b⁺ Ly6G⁻ cells were quantitated. Data are represented as mean +/- SEM.



Supplemental Figure 3 - Neutrophils are not required to regulate the EF RF response. BALB/c mice were sacrificed on day 7 following transfer of purified AM14 sd-Tg B cells, administration of PL2-3, and neutrophil depletion as indicated in Materials and Methods. **(A)** CD11b⁺ Ly6G⁺ cells were quantitated. **(B)** CD11b⁺ Ly6G⁻ cells were quantitated. **(C)** Representative flow cytometry plots show scatter properties of CD11b⁺ Ly6G⁺ cells and CD11b⁺ Ly6G⁻ cells. **(D)** Surface and intracellular 4-44 double positive cells were quantitated by flow cytometry. **(E-F)** Splenic 4-44⁺ AFC of IgM (E) or IgG2a (F) isotype. (A-B and D-F) At least 6 mice per group and 2 independent experiments per time point were compiled. **p<0.01 by Mann-Whitney two-tailed test. Data are plotted as mean +/- SEM.



Supplemental Figure 4 - Anti-CD40L reduces frequency of activated T cells. BALB/c or *Myd88*^{-/-} *Fcer1g*^{-/-} BALB/c mice were sacrificed on day 7 following transfer of purified AM14 sd-Tg B cells, CD40L blocking, and administration of PL2-3 as indicated in Materials and Methods. TCR beta⁺ CD4⁺ CD62L⁻ CD44⁺ cells are plotted as a percent of live splenocytes. Data represent mean +/- SEM. ** p<0.01 by two-tailed Mann-Whitney test.