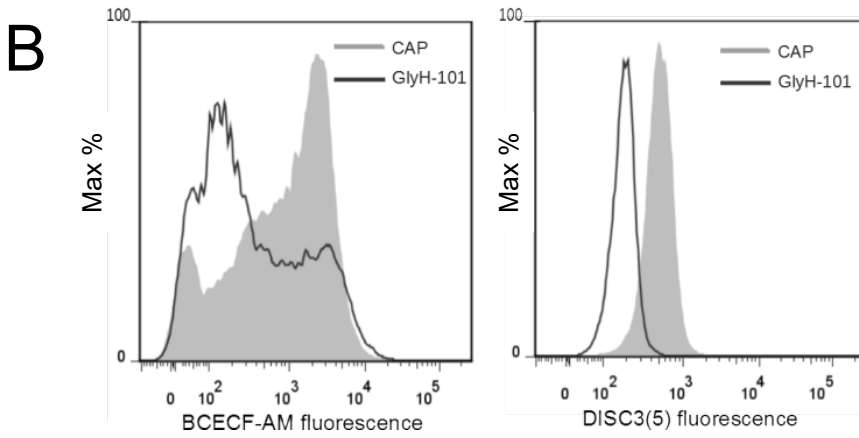
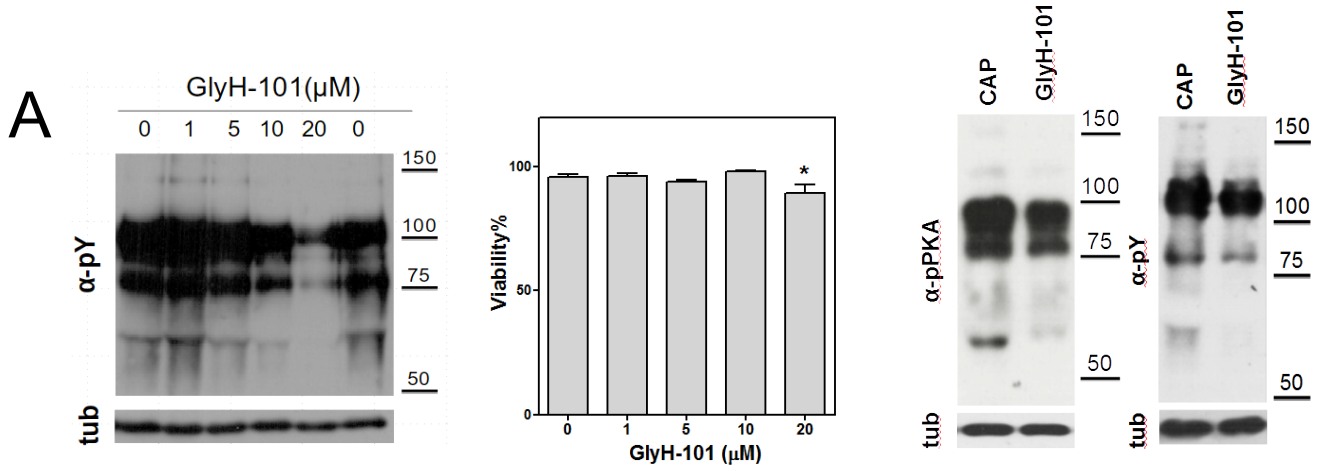
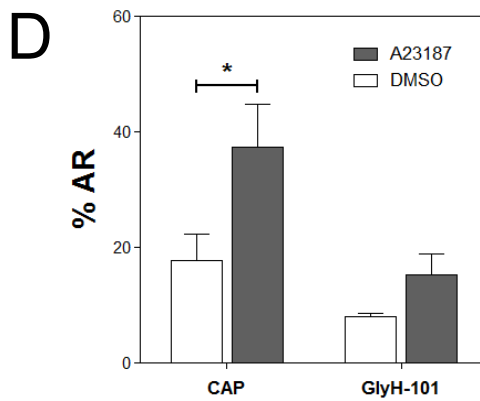


# Supplementary Figure 1

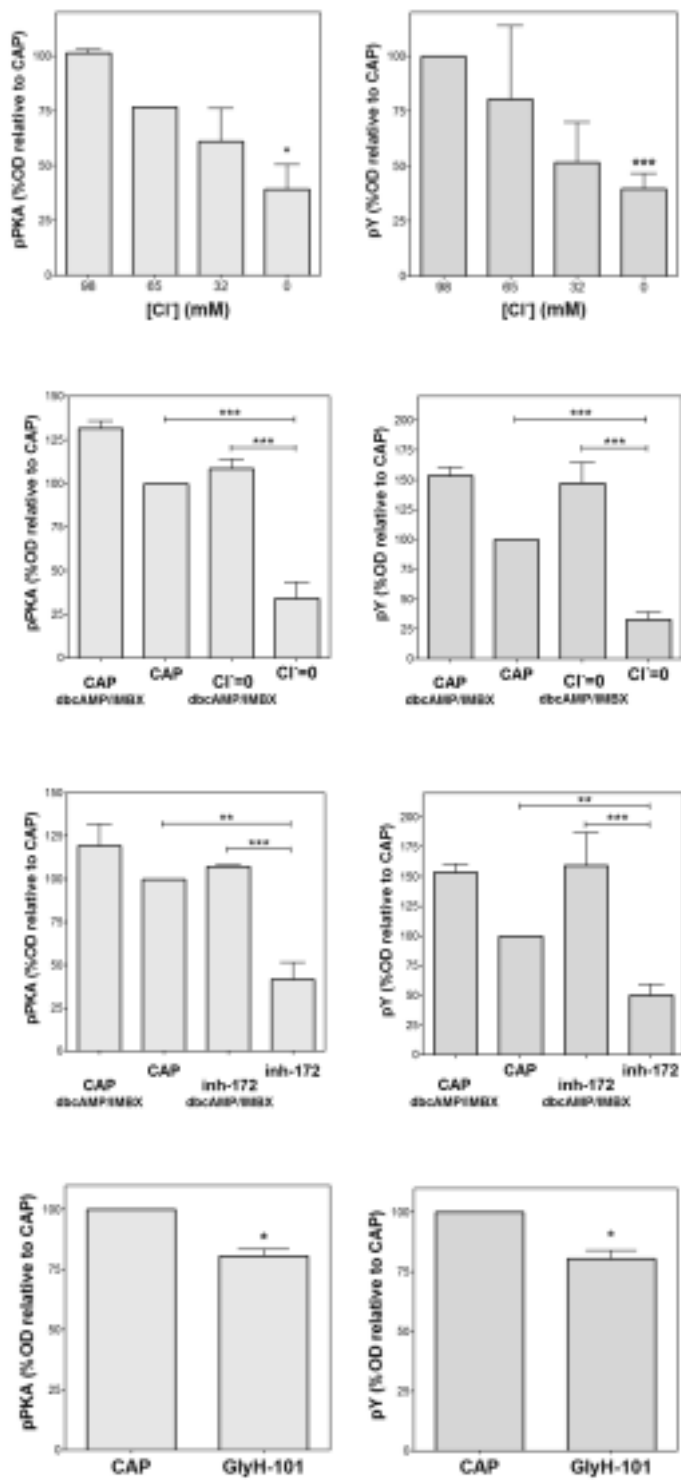


**C**

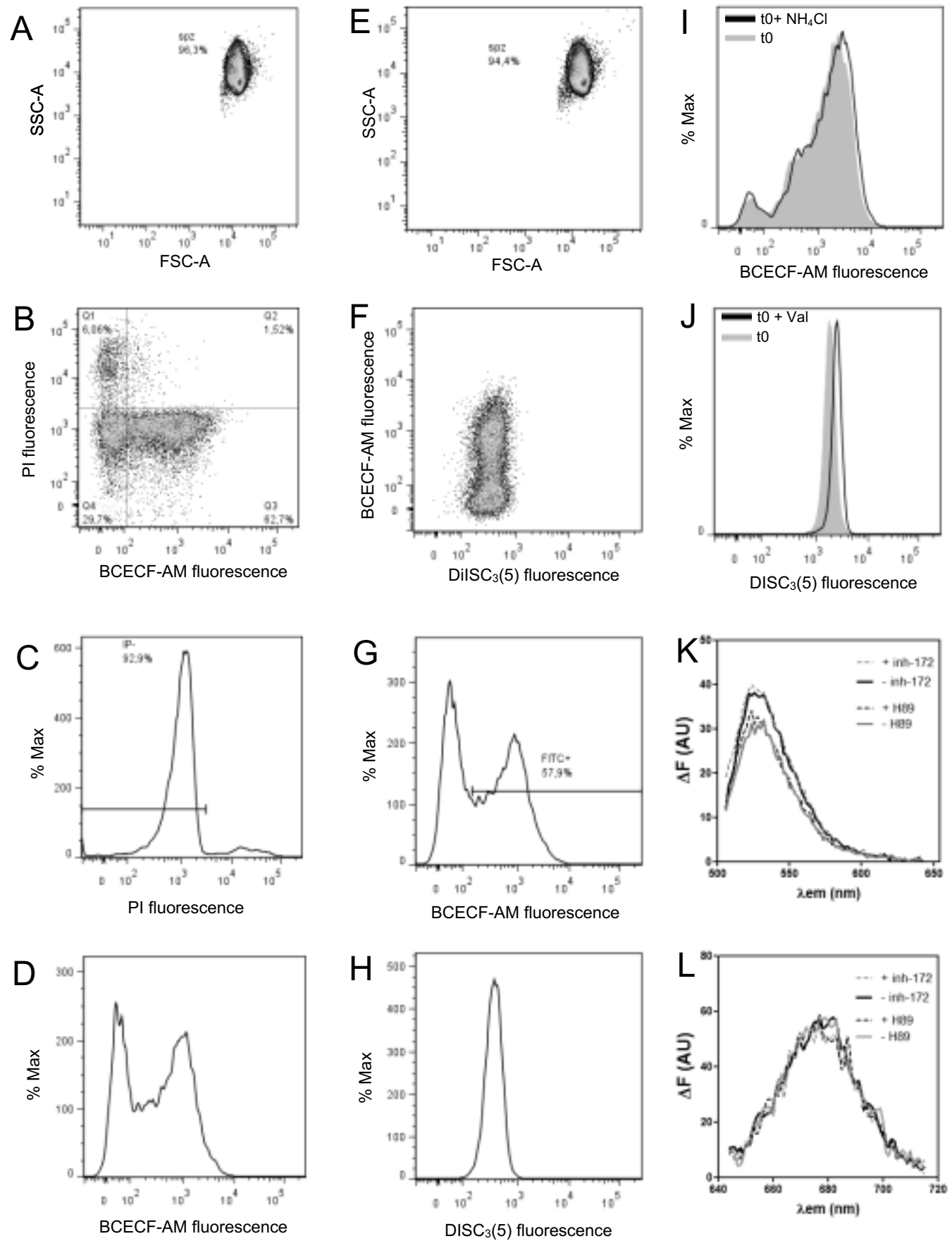
	Relative median BCECF-AM fluorescence	Relative median DISC <sub>3</sub> (5) fluorescence
GlyH101	0,54±0,12 *	0,42±0,10 **



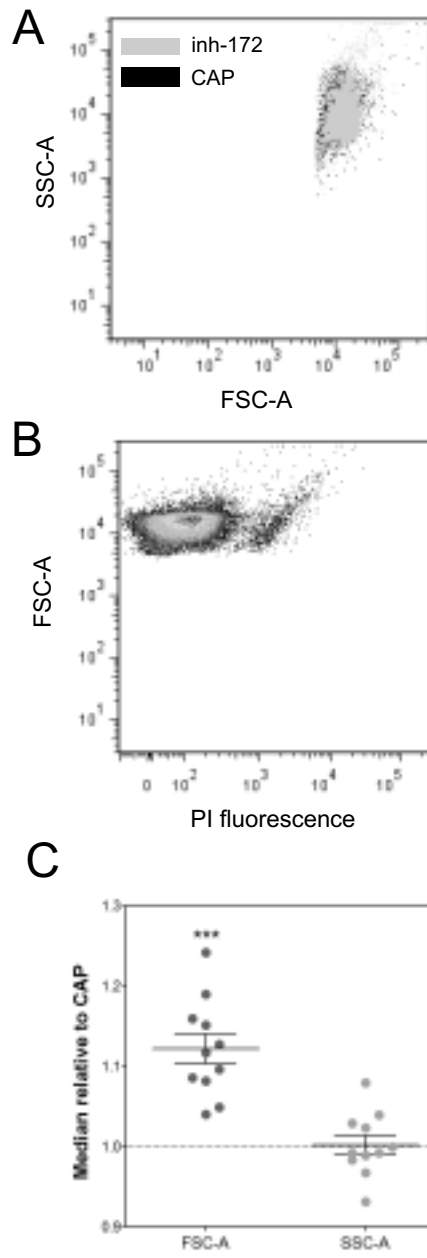
## Supplementary Figure 2



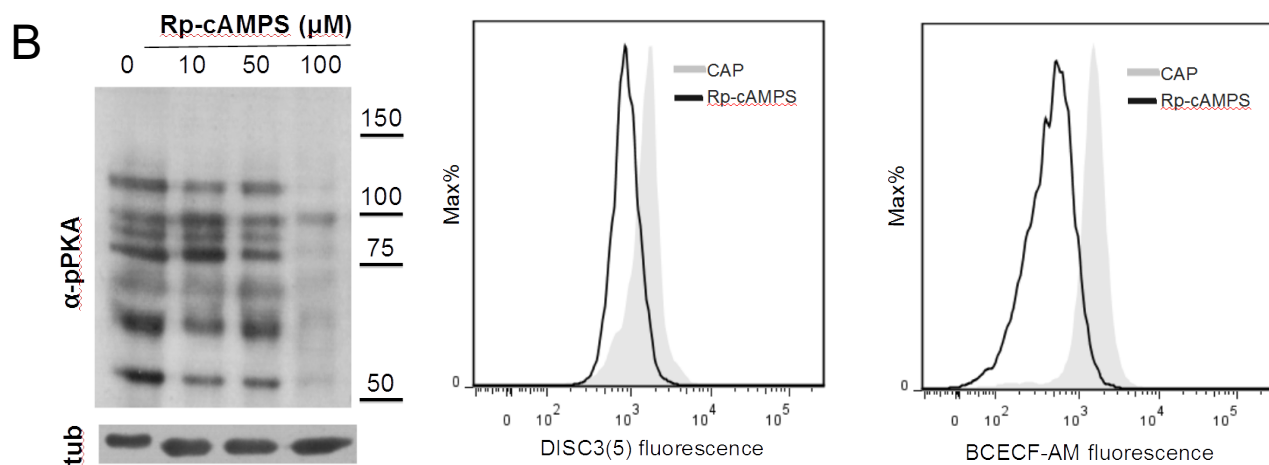
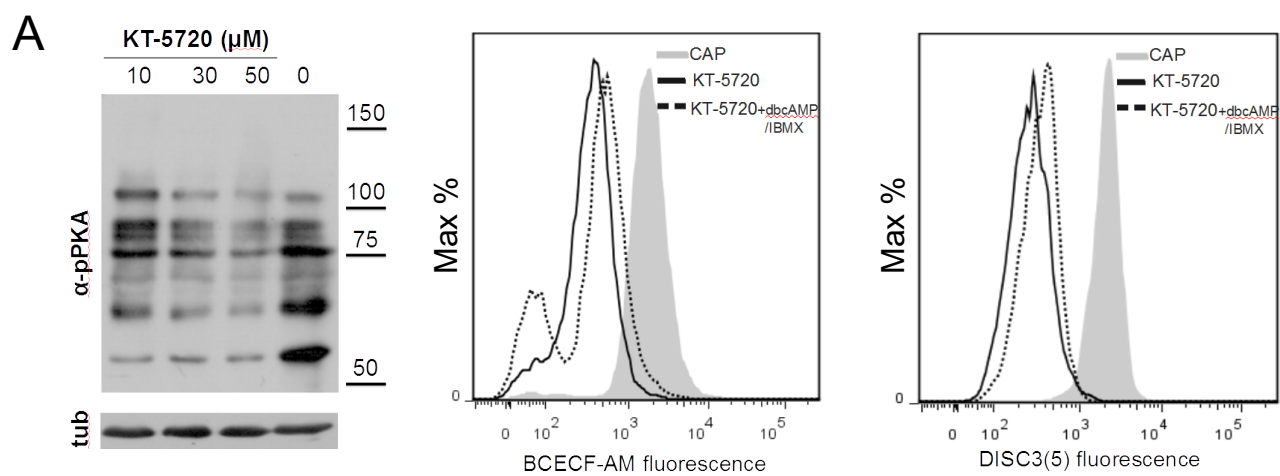
Supplementary Figure 3

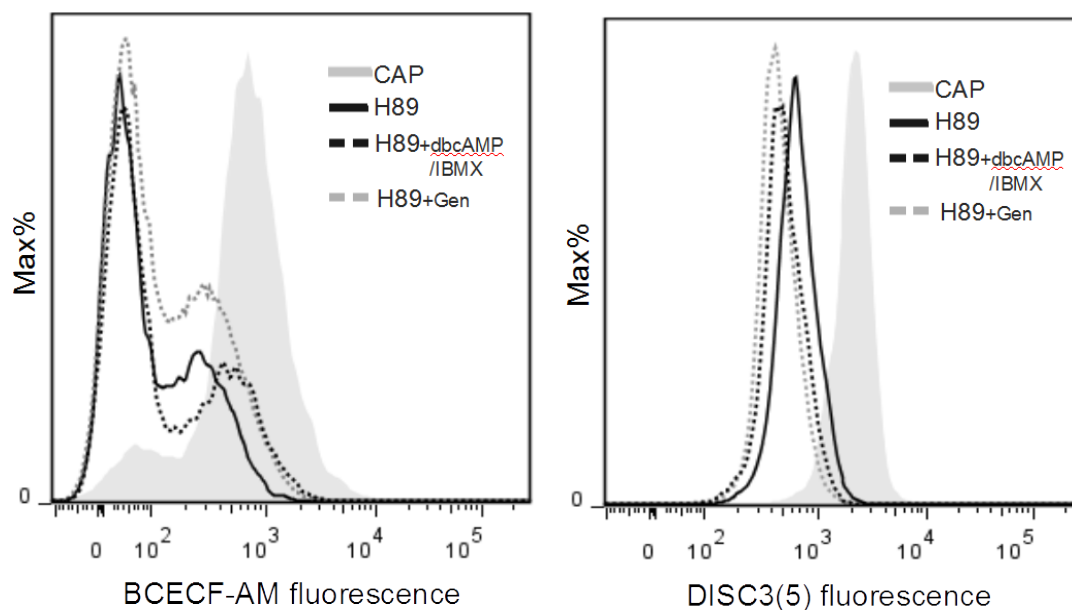


Supplementary Figure 4



Supplementary Figure 5





**Supplementary Figure for review (not to be included in the manuscript):**

**Effect of genistein and H89 on pHi and Em.** Human sperm were incubated for 5 hour in media that supports capacitation in the absence (CAP) or presence of H89 (30  $\mu$ M, solid line). Subsequently, aliquots from each condition were processed by flow cytometry to evaluate pHi with BCECF-AM probe and Em with DiSC<sub>3</sub>(5). Addition of dbcAMP 1mM and IBMX 0.2 mM (black dotted lines) or genistein 5  $\mu$ M (gray dotted lines) did not rescue both, the acidification and depolarization produced by H89. (n=3)