

Supplementary Material

Legends to supplementary figures

Fig. S1. Three-dimensional FISH analysis of the outer nuclear layer of a retina section. Photographs of multiple cross-sections were taken along the z axis, for a region of the outer nuclear layer that contained approximately 20 rod nuclei.

Fig. S2. Three-dimensional FISH analysis of a single rod nucleus. A typical single nucleus, indicated by a square in Figure 2, was selected and analyzed with a higher magnification than that used for the images in Supplementary Figure S1.

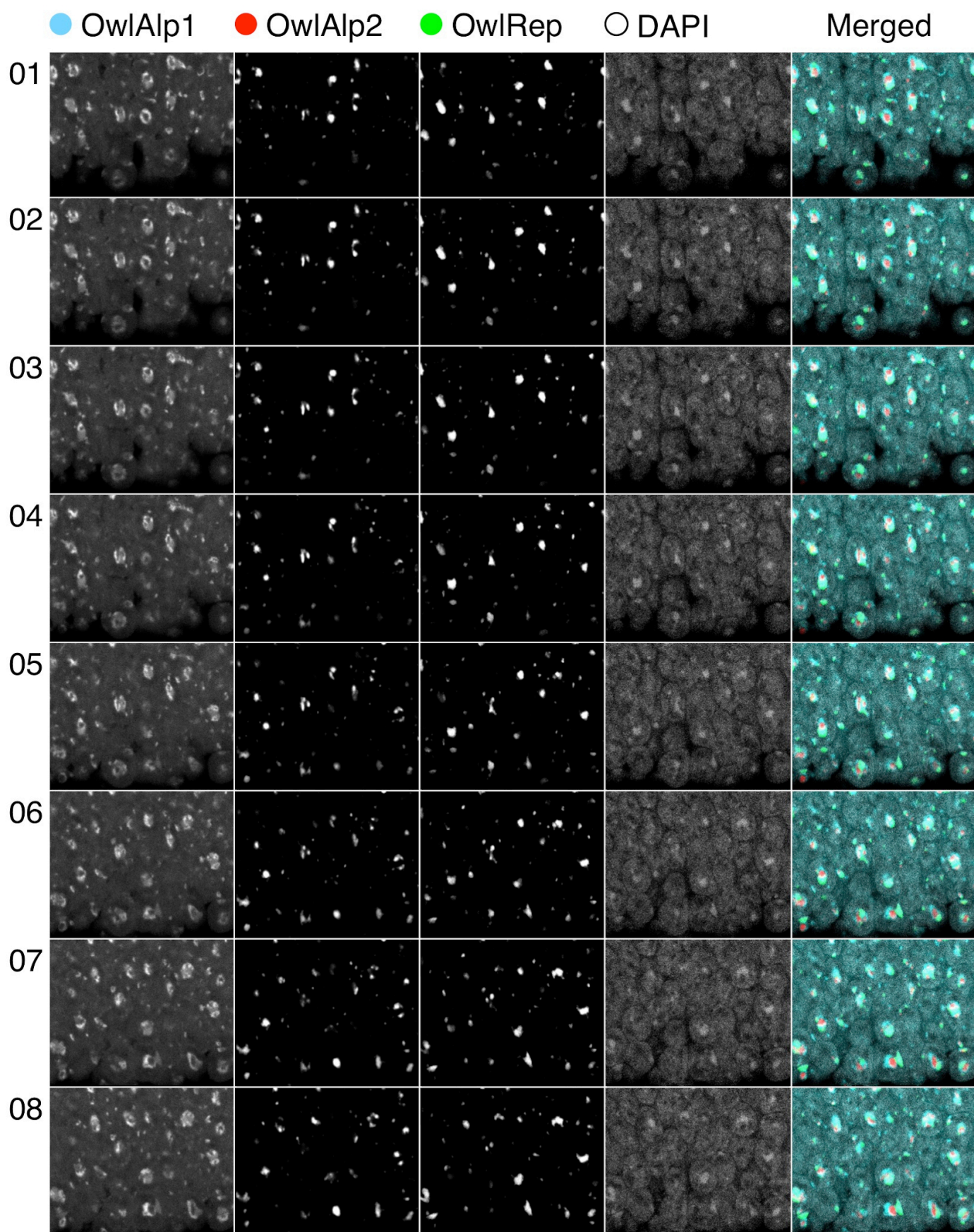


Figure S1 (1 of 3)

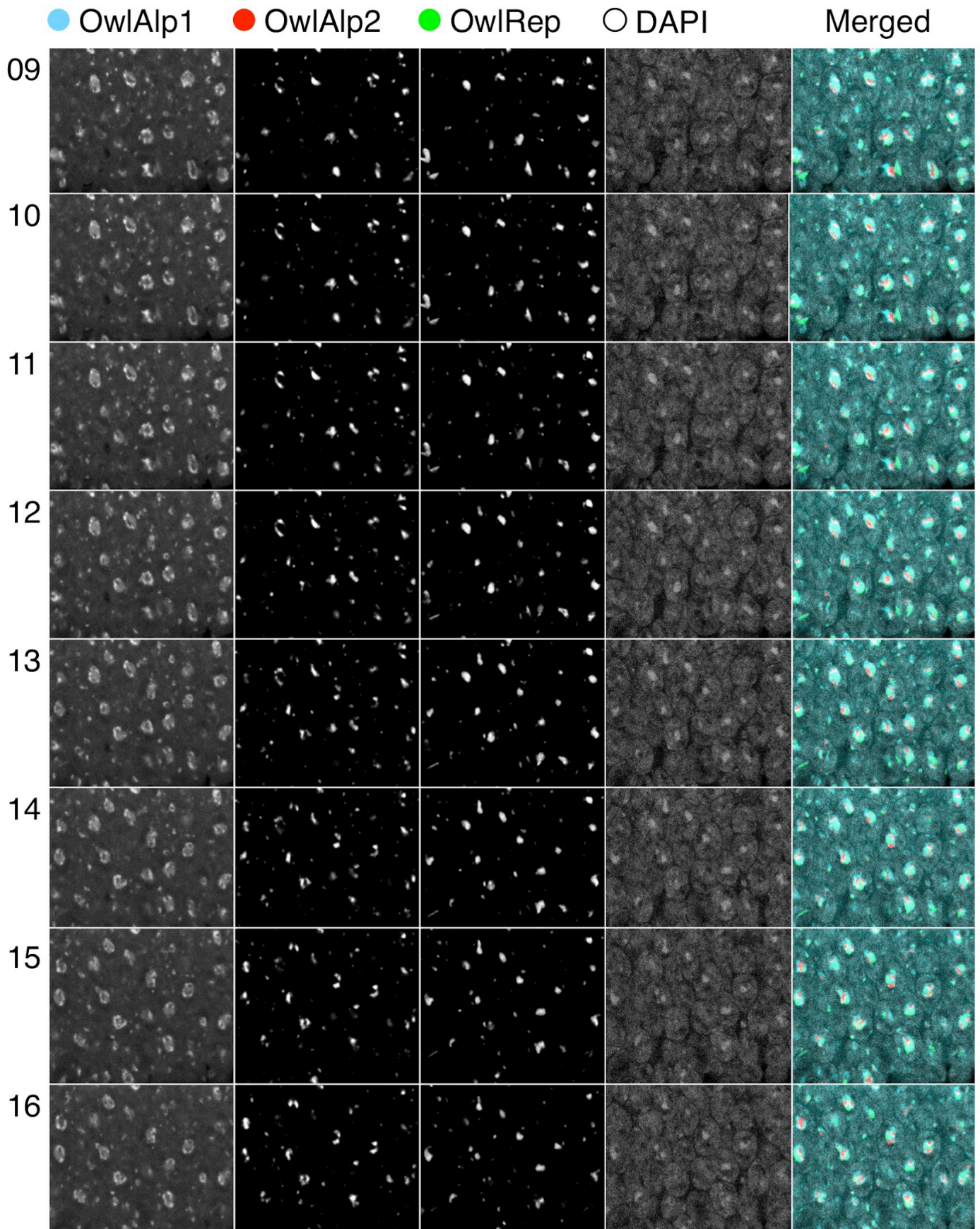


Figure S1 (2 of 3)

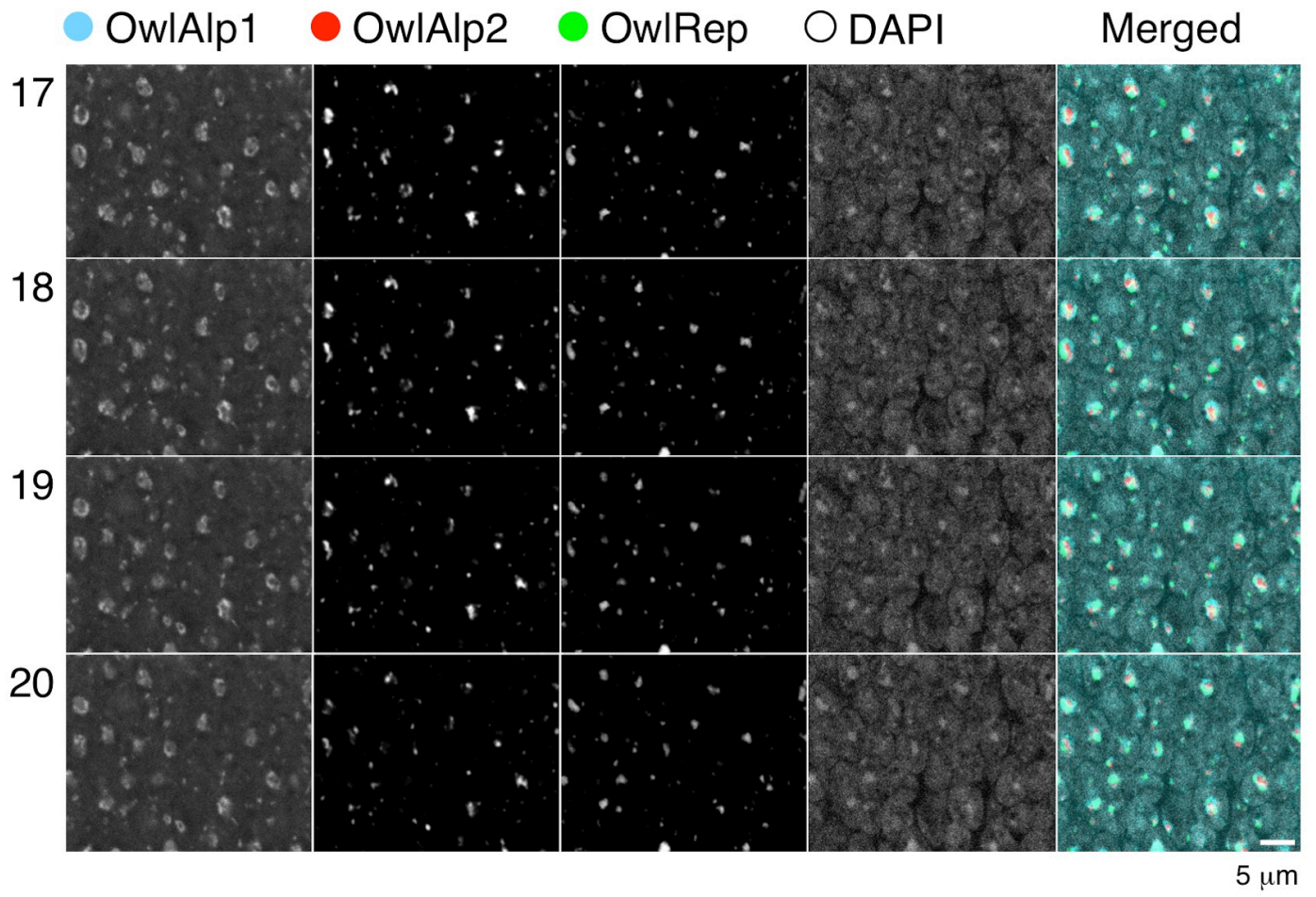


Figure S1 (3 of 3)

● OwlAlp1 ● OwlAlp2 ● OwlRep ○ DAPI Merged

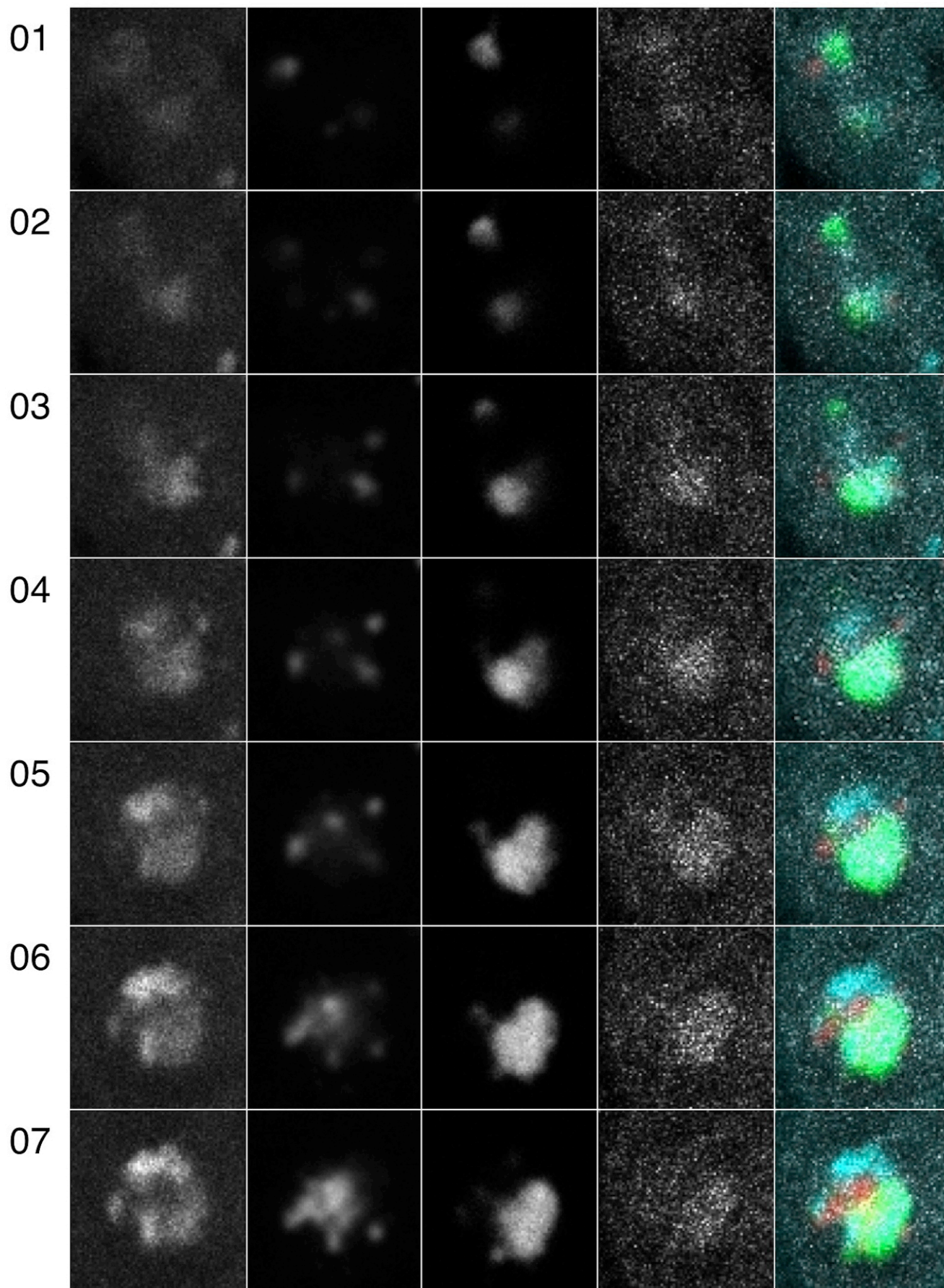
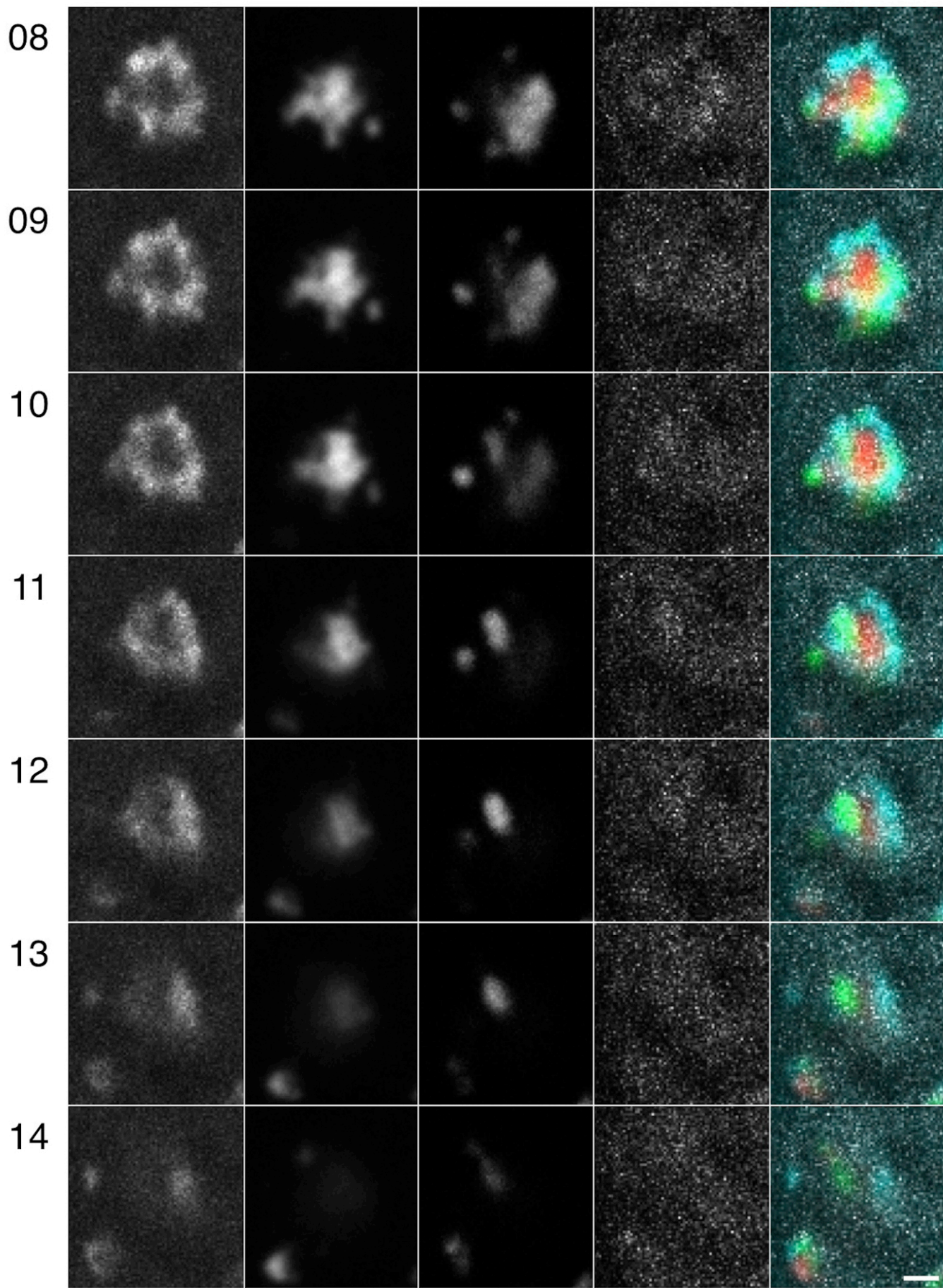


Figure S2 (1 of 2)

● OwlAlp1 ● OwlAlp2 ● OwlRep ○ DAPI Merged



1 μm

Figure S2 (2 of 2)