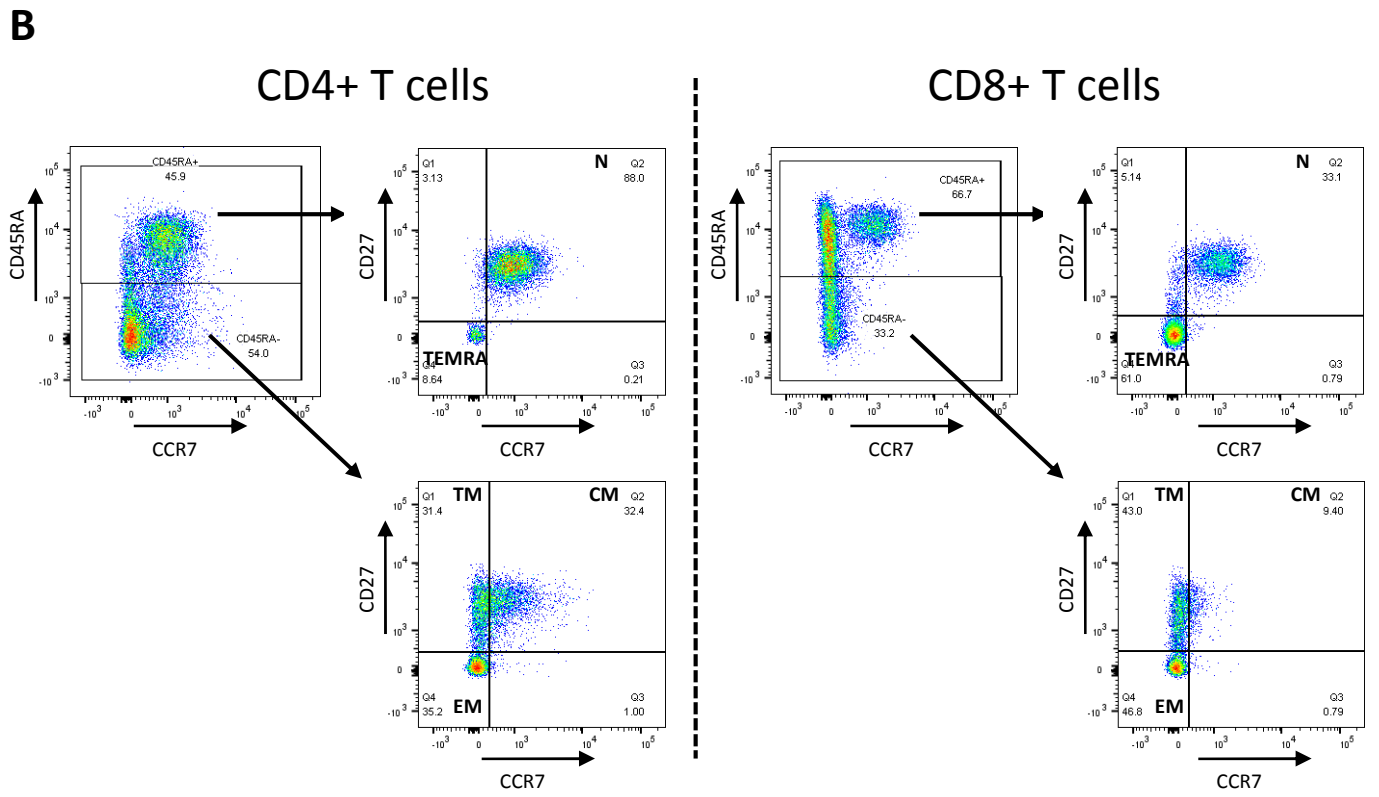
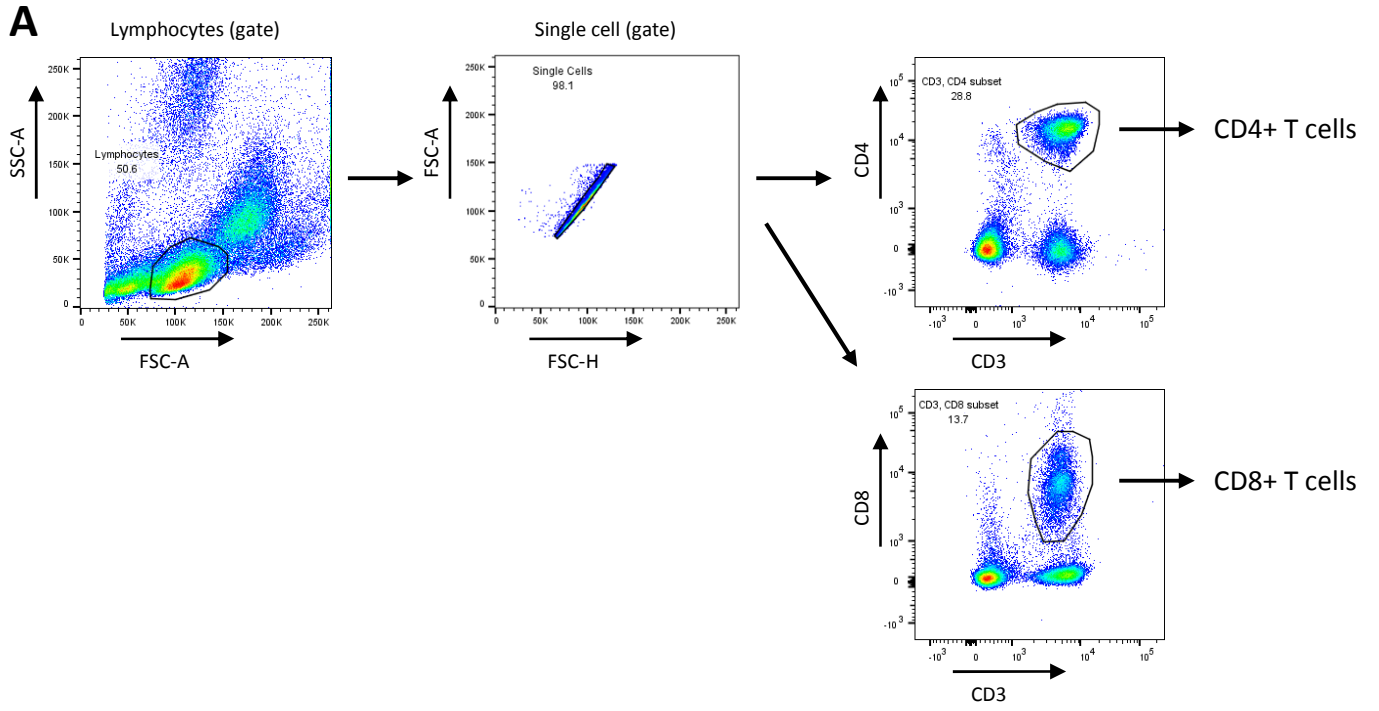
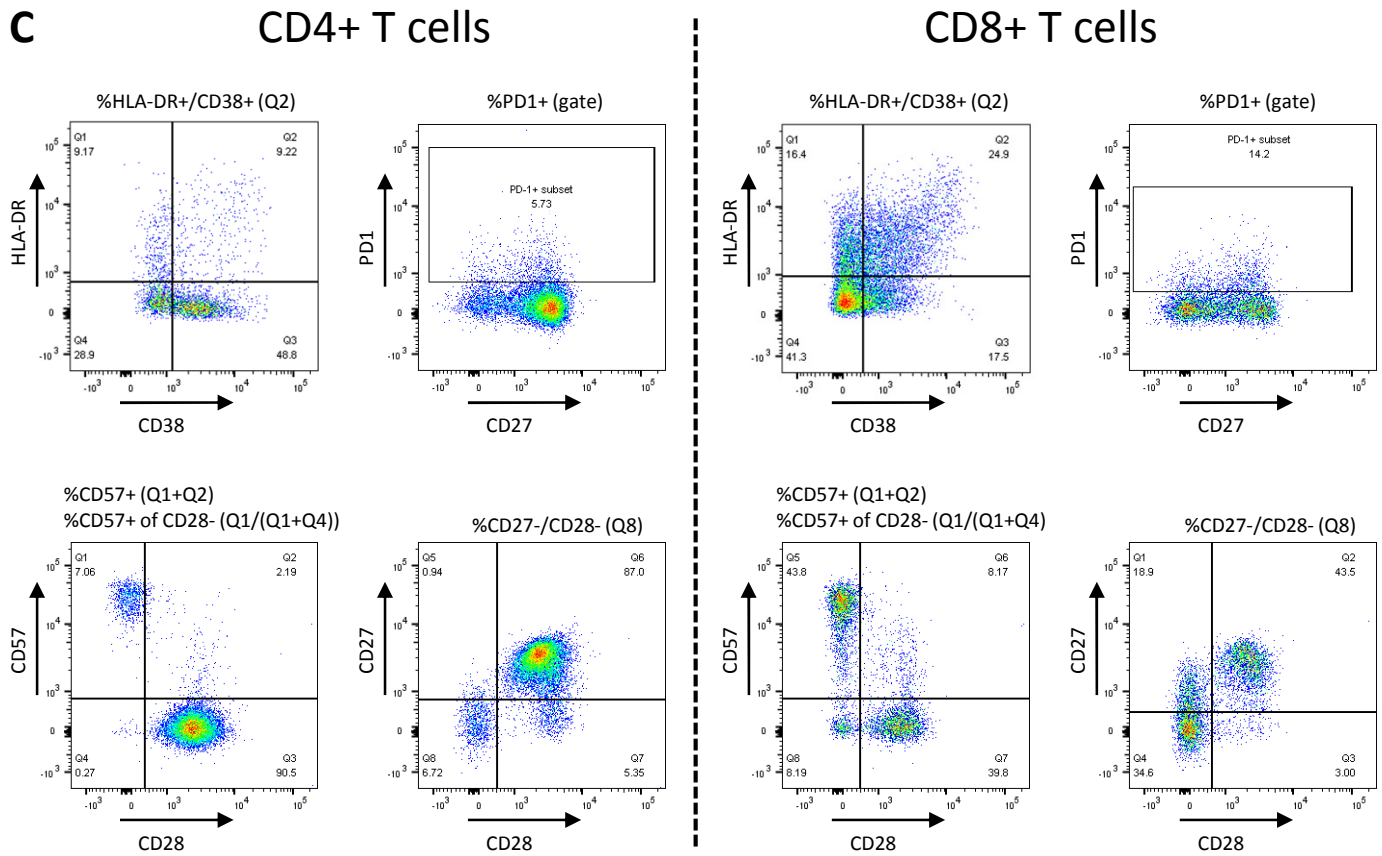


S1 Fig.





S1 Fig. Gating strategy flow cytometry. A. Gating of CD4+ and CD8+ T cells. **B.** T cell differentiation was defined as the proportion of naïve (N; CD45RA⁺CD27⁺CCR7⁺), central memory (CM; CD45RA⁻CCR7⁺CD27⁺), transitional memory (TM; CD45RA⁻CCR7⁻CD27⁺), effector memory (EM; CD45RA⁻CCR7⁻CD27⁻), and terminally differentiated effector memory (TEMRA; CD45RA⁺CCR7⁻CD27⁻) within the total CD4 or CD8 T cell population. **C.** T cell activation was defined as the proportion of cells that were positive for both CD38 and HLA-DR within the total CD4 or CD8 T cell population. T cell exhaustion was defined as the proportion of PD1 positive cells within the total CD4 or CD8 T cell population. Terminally differentiated T cells were defined as proportion of CD57 positive cells within the total CD4 or CD8 T cells population, the proportion of cells negative for both CD27 and CD28 within the total CD4 or CD8 T-cells population, or the proportion of CD57 positive within the CD28⁻CD4⁺ or CD28⁻CD8⁺ T cell population.